

Infantry Brigade:
 8) Line Infantry Strength = 9, QR= Average
 9) Line Infantry Strength = 9, QR= Average
 10) Line Infantry Strength = 9, QR= Average
 11) Line Infantry Strength = 9, QR= Average
 12) Line Infantry Strength = 9, QR= Average
 13) Line Infantry Strength = 9, QR= Average
 14) Foot Artillery Medium Artillery, Strength = 4, QR= Average

Division Artillery:
 15) Foot Artillery Medium Artillery, Strength = 3, QR= Average

Units: 2nd Infantry Division

Infantry Brigade:
 1) Line Infantry Strength = 9, QR= Average
 2) Line Infantry Strength = 9, QR= Average
 3) Line Infantry Strength = 9, QR= Average
 4) Line Infantry Strength = 9, QR= Average
 5) Line Infantry Strength = 9, QR= Average
 6) Line Infantry Strength = 9, QR= Average
 7) Foot Artillery Medium Artillery, Strength = 4, QR= Average

Infantry Brigade:
 8) Line Infantry Strength = 9, QR= Average
 9) Line Infantry Strength = 9, QR= Average
 10) Line Infantry Strength = 9, QR= Average
 11) Line Infantry Strength = 9, QR= Average
 12) Line Infantry Strength = 9, QR= Average
 13) Line Infantry Strength = 9, QR= Average
 14) Foot Artillery Medium Artillery, Strength = 4, QR= Average

Division Artillery:
 15) Foot Artillery Medium Artillery, Strength = 3, QR= Average

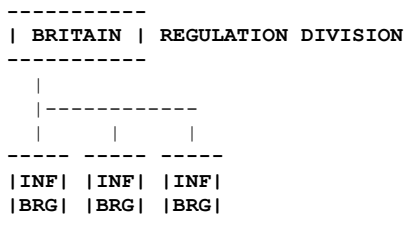
Units: 3rd Light Division

Light Brigade:
 1) Jager Light, Rifle Armed, Strength = 6, QR= Veteran
 2) Grenze Light, Strength = 9, QR= Average
 3) Hussars Light Cavalry, Strength = 8, QR= Veteran
 4) Horse Artillery Medium Artillery, Strength = 3, QR= Average

Light Brigade:
 5) Grenze Light, Strength = 9, QR= Average
 6) Grenze Light, Strength = 9, QR= Average
 7) Hussars Light Cavalry, Strength = 8, QR= Veteran
 8) Horse Artillery Medium Artillery, Strength = 3, QR= Average

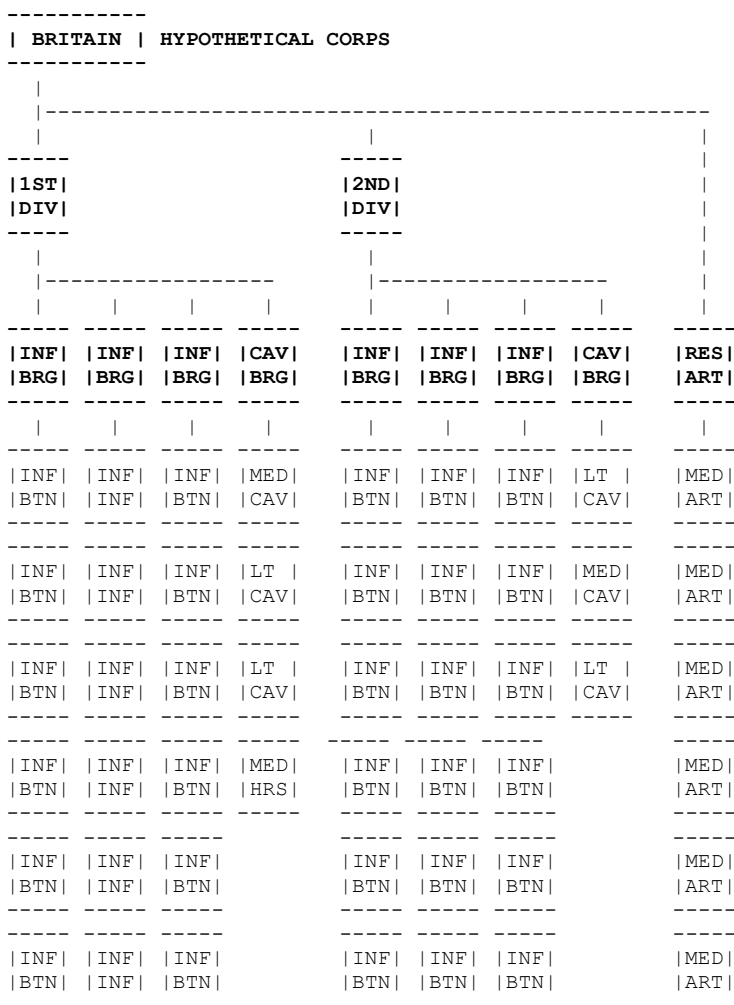
Units: Corps Reserve Artillery

1) Foot Artillery Heavy Artillery, Strength = 3, QR= Average
 2) Foot Artillery Heavy Artillery, Strength = 3, QR= Average
 3) Horse Artillery Medium Artillery, Strength = 3, QR= Average



Notes:

The British didn't have a formal corps structure as such. The British, however, did have a formal Division structure. Each Division was to consist of three Brigades – two British brigades with the other brigade normally foreign. Several Divisions then formed a "Corps" as such, and any cavalry or artillery available at the time was deployed throughout the "Corps" in various ways where it was felt they were needed (see the hypothetical example below).



Total:
36 Battalions
6 Cavalry Regiments
7 Artillery Batteries

HYPOTHETICAL BRITISH CORPS

Units: 1st Division:

- Infantry Brigade:
- 1) Line Infantry Strength = 5, QR = Average
 - 2) Line Infantry Strength = 5, QR = Average
 - 3) Line Infantry Strength = 5, QR = Average
 - 4) Highlanders Light, Strength = 6, QR = Average
 - 5) Highlanders Light, Strength = 6, QR = Average
 - 6) Highlanders Light, Strength = 6, QR = Average

Infantry Brigade:

- | | |
|-------------------|----------------------------|
| 7) Line Infantry | Strength = 5, QR = Average |
| 8) Line Infantry | Strength = 5, QR = Average |
| 9) Line Infantry | Strength = 5, QR = Average |
| 10) Line Infantry | Strength = 5, QR = Average |
| 11) Line Infantry | Strength = 5, QR = Average |
| 12) Line Infantry | Strength = 5, QR = Average |

Infantry Brigade:

- | | |
|-----------------------|-----------------------------------|
| 13) Light Infantry | Light, Strength = 5, QR = Average |
| 14) Light Infantry | Light, Strength = 5, QR = Average |
| 15) Light Infantry | Light, Strength = 5, QR = Average |
| 16) KGL Line Infantry | Strength = 5, QR = Average |
| 17) KGL Line Infantry | Strength = 5, QR = Average |
| 18) KGL Line Infantry | Strength = 5, QR = Average |

Cavalry Brigade:

- | | |
|---------------------------|--|
| 19) Heavy Dragoons | Medium Cavalry, Strength = 4, QR = Veteran |
| 20) Light Dragoons | Light Cavalry, Strength = 4, QR = Veteran |
| 21) Hussars | Light Cavalry, Strength = 4, QR = Veteran |
| 22) Royal Horse Artillery | Medium Artillery, Strength = 4, QR = Veteran |

Units: 2nd Division:

Infantry Brigade (Guards):

- | | |
|----------------------------|--|
| 1) Fusiliers | Strength = 5, QR = Average |
| 2) Fusiliers | Strength = 5, QR = Average |
| 3) 95 th Rifles | Light, Rifle Armed, Strength = 5, QR = Veteran |
| 4) Marines | Strength = 4, QR = Average |
| 5) Guard Infantry | Light, Strength = 9, QR = Veteran |
| 6) Guard Infantry | Light, Strength = 9, QR = Veteran |

Infantry Brigade:

- | | |
|----------------------------|----------------------------|
| 7) Line Infantry | Strength = 5, QR = Average |
| 8) Line Infantry | Strength = 5, QR = Average |
| 9) Line Infantry | Strength = 5, QR = Average |
| 10) Dutch-Belgian Infantry | Strength = 6, QR = Average |
| 11) Dutch-Belgian Infantry | Strength = 6, QR = Average |
| 12) Dutch-Belgian Infantry | Strength = 6, QR = Average |

Infantry Brigade:

- | | |
|-----------------------|-----------------------------------|
| 13) Light Infantry | Light, Strength = 5, QR = Average |
| 14) Light Infantry | Light, Strength = 5, QR = Average |
| 15) Light Infantry | Light, Strength = 5, QR = Average |
| 16) KGL Line Infantry | Strength = 5, QR = Average |
| 17) KGL Line Infantry | Strength = 5, QR = Average |
| 18) KGL Line Infantry | Strength = 5, QR = Average |

Cavalry Brigade:

- | | |
|-------------------------------------|--|
| 19) 15 th Light Dragoons | Light Cavalry, Strength = 4, QR = Veteran |
| 20) Horse Guards | Medium Cavalry, Strength = 3, QR = Veteran |
| 21) KGL Light Dragoons | Light Cavalry, Strength = 4, QR = Veteran |

Units: Corps Reserve Artillery:

- | | |
|-----------------------|--|
| 1) Foot Artillery | Medium Artillery, Strength = 3, QR = Veteran |
| 2) Foot Artillery | Medium Artillery, Strength = 3, QR = Veteran |
| 3) Foot Artillery | Medium Artillery, Strength = 3, QR = Veteran |
| 4) Foot Artillery | Medium Artillery, Strength = 3, QR = Veteran |
| 5) Foot Artillery | Medium Artillery, Strength = 3, QR = Veteran |
| 6) KGL Foot Artillery | Medium Artillery, Strength = 3, QR = Veteran |

 | FRANCE | REGULATION CORPS, 1809

1ST			2ND			3RD			CAV		
DIV			DIV			DIV			DIV		
INF	INF	DIV	INF	INF	DIV	INF	INF	DIV	CAV	CAV	RES
BRG	BRG	ART	BRG	BRG	ART	BRG	BRG	ART	BRG	BRG	ART
INF	LT	MED	INF	LT	MED	INF	LT	MED	LT	MED	HVY
BTN	INF	ART	BTN	INF	ART	BTN	INF	ART	CAV	CAV	ART
INF	LT	MED	INF	LT	MED	INF	LT	MED	LT	MED	HVY
BTN	INF	ART	BTN	INF	ART	BTN	INF	ART	CAV	CAV	ART
INF	LT		INF	LT		INF	LT		MED		
BTN	INF		BTN	INF		BTN	INF		HRS		
INF	INF		INF	INF		INF	INF				
BTN	BTN		BTN	BTN		BTN	BTN				
INF	INF		INF	INF		INF	INF				
BTN	BTN		BTN	BTN		BTN	BTN				
INF	INF		INF	INF		INF	INF				
BTN	BTN		BTN	BTN		BTN	BTN				

Summary:

- 36 Infantry Battalions
- 4 Cavalry Regiments
- 9 Artillery Batteries

REGULATION FRENCH CORPS: 1809

Units: 1st Infantry Division:

Infantry Brigade:

- 1) Line Infantry Strength = 7, QR = Average
- 2) Line Infantry Strength = 7, QR = Average
- 3) Line Infantry Strength = 7, QR = Average
- 4) Line Infantry Strength = 7, QR = Average
- 5) Line Infantry Strength = 7, QR = Average
- 6) Line Infantry Strength = 7, QR = Average

Infantry Brigade:

- 7) Line Infantry Strength = 7, QR = Average
- 8) Line Infantry Strength = 7, QR = Average
- 9) Line Infantry Strength = 7, QR = Average
- 10) Light Infantry Light, Strength = 7, QR = Average
- 11) Light Infantry Light, Strength = 7, QR = Average
- 12) Light Infantry Light, Strength = 7, QR = Average

Division Artillery:

- 13) Foot Artillery Medium Artillery, Strength = 4, QR = Average
- 14) Foot Artillery Medium Artillery, Strength = 4, QR = Average

Units: 2nd Infantry Division:

Infantry Brigade:

- | | |
|------------------|----------------------------|
| 1) Line Infantry | Strength = 7, QR = Average |
| 2) Line Infantry | Strength = 7, QR = Average |
| 3) Line Infantry | Strength = 7, QR = Average |
| 4) Line Infantry | Strength = 7, QR = Average |
| 5) Line Infantry | Strength = 7, QR = Average |
| 6) Line Infantry | Strength = 7, QR = Average |

Infantry Brigade:

- | | |
|--------------------|-----------------------------------|
| 7) Line Infantry | Strength = 7, QR = Average |
| 8) Line Infantry | Strength = 7, QR = Average |
| 9) Line Infantry | Strength = 7, QR = Average |
| 10) Light Infantry | Light, Strength = 7, QR = Average |
| 11) Light Infantry | Light, Strength = 7, QR = Average |
| 12) Light Infantry | Light, Strength = 7, QR = Average |

Division Artillery:

- | | |
|--------------------|--|
| 13) Foot Artillery | Medium Artillery, Strength = 4, QR = Average |
| 14) Foot Artillery | Medium Artillery, Strength = 4, QR = Average |

Units: 3rd Infantry Division:

Infantry Brigade:

- | | |
|------------------|----------------------------|
| 1) Line Infantry | Strength = 7, QR = Average |
| 2) Line Infantry | Strength = 7, QR = Average |
| 3) Line Infantry | Strength = 7, QR = Average |
| 4) Line Infantry | Strength = 7, QR = Average |
| 5) Line Infantry | Strength = 7, QR = Average |
| 6) Line Infantry | Strength = 7, QR = Average |

Infantry Brigade:

- | | |
|--------------------|-----------------------------------|
| 7) Line Infantry | Strength = 7, QR = Average |
| 8) Line Infantry | Strength = 7, QR = Average |
| 9) Line Infantry | Strength = 7, QR = Average |
| 10) Light Infantry | Light, Strength = 7, QR = Average |
| 11) Light Infantry | Light, Strength = 7, QR = Average |
| 12) Light Infantry | Light, Strength = 7, QR = Average |

Division Artillery:

- | | |
|--------------------|--|
| 13) Foot Artillery | Medium Artillery, Strength = 4, QR = Average |
| 14) Foot Artillery | Medium Artillery, Strength = 4, QR = Average |

Units: Cavalry Division:

Cavalry Brigade:

- | | |
|-----------------------|--|
| 1) Chasseurs a Cheval | Light Cavalry, Strength = 8, QR = Average |
| 2) Hussars | Light Cavalry, Strength = 6, QR = Average |
| 3) Horse Artillery | Medium Artillery, Strength = 3, QR = Veteran |

Cavalry Brigade:

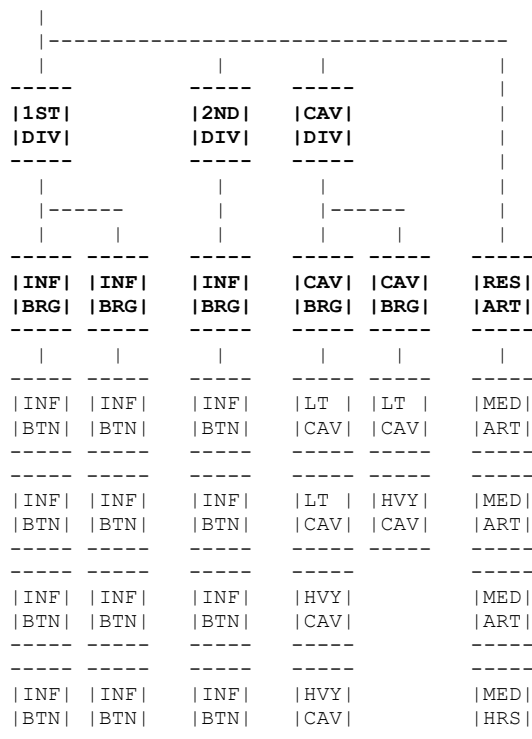
- | | |
|-------------|--|
| 4) Dragoons | Medium Cavalry, Strength = 6, QR = Average |
| 5) Dragoons | Medium Cavalry, Strength = 6, QR = Average |

Units: Corps Reserve Artillery

- | | |
|-------------------|---|
| 1) Foot Artillery | Heavy Artillery, Strength = 4, QR = Average |
| 2) Foot Artillery | Heavy Artillery, Strength = 4, QR = Average |

Note: The above regulation corps is as prescribed by Napoleon. However, such a formation was rarely fielded.

 | THE FRENCH GUARD CORPS | HISTORIC CORPS, 1805



Summary:

- 12 Infantry Battalions
- 6 Cavalry Regiments
- 4 Artillery Batteries

THE FRENCH GUARD CORPS: 1805

Units: Young Guard Infantry Division

Infantry Brigade:

- 1) Young Guard Light, Strength = 7, QR = Veteran
- 2) Young Guard Light, Strength = 7, QR = Veteran
- 3) Young Guard Light, Strength = 7, QR = Veteran
- 4) Young Guard Light, Strength = 7, QR = Veteran

Infantry Brigade:

- 5) Young Guard Light, Strength = 7, QR = Veteran
- 6) Young Guard Light, Strength = 7, QR = Veteran
- 7) Young Guard Light, Strength = 7, QR = Veteran
- 8) Young Guard Light, Strength = 7, QR = Veteran

Units: Old Guard Infantry Division

Infantry Brigade:

- 1) Old Guard Light, Strength = 7, QR = Veteran
- 2) Old Guard Light, Strength = 7, QR = Veteran
- 3) Old Guard Light, Strength = 7, QR = Veteran
- 4) Old Guard Light, Strength = 7, QR = Veteran

Units: Guard Cavalry Division

Cavalry Brigade:

- 1) Polish Lancers Light, Lance armed, Strength = 8, QR = Veteran
- 2) Chasseurs a Cheval Light Cavalry, Strength = 6, QR = Veteran
- 3) Grenadiers a Cheval Heavy Cavalry, Strength = 5, QR = Veteran
- 4) Empress Dragoons Heavy Cavalry, Strength = 8, QR = Veteran

Cavalry Brigade:

- 5) Polish Chevauleger Light Cavalry, Strength = 5, QR = Veteran
- 6) Gendarmes d'Elite Heavy Cavalry, Strength = 3, QR = Veteran

Units: Guard Reserve Artillery

- | | |
|--------------------|--|
| 1) Foot Artillery | Heavy Artillery, Strength = 4, QR = Veteran |
| 2) Foot Artillery | Medium Artillery, Strength = 4, QR = Veteran |
| 3) Foot Artillery | Medium Artillery, Strength = 4, QR = Veteran |
| 4) Horse Artillery | Medium Artillery, Strength = 4, QR = Veteran |

 | THE KING'S GERMAN LEGION | HISTORIC DIVISION, 1806

INF	INF	INF	INF	INF	CAV	CAV
BRG	BRG	BRG	BRG	BRG	BRG	BRG
LT	INF	INF	INF	INF	HVY	LT
INF	INF	BTN	BTN	BTN	CAV	CAV
LT	INF	INF	INF	INF	HVY	LT
INF	INF	BTN	BTN	BTN	CAV	CAV
	MED	MED	MED	MED	MED	LT
	ART	ART	ART	ART	HRS	CAV
						MED
						HRS

Summary:

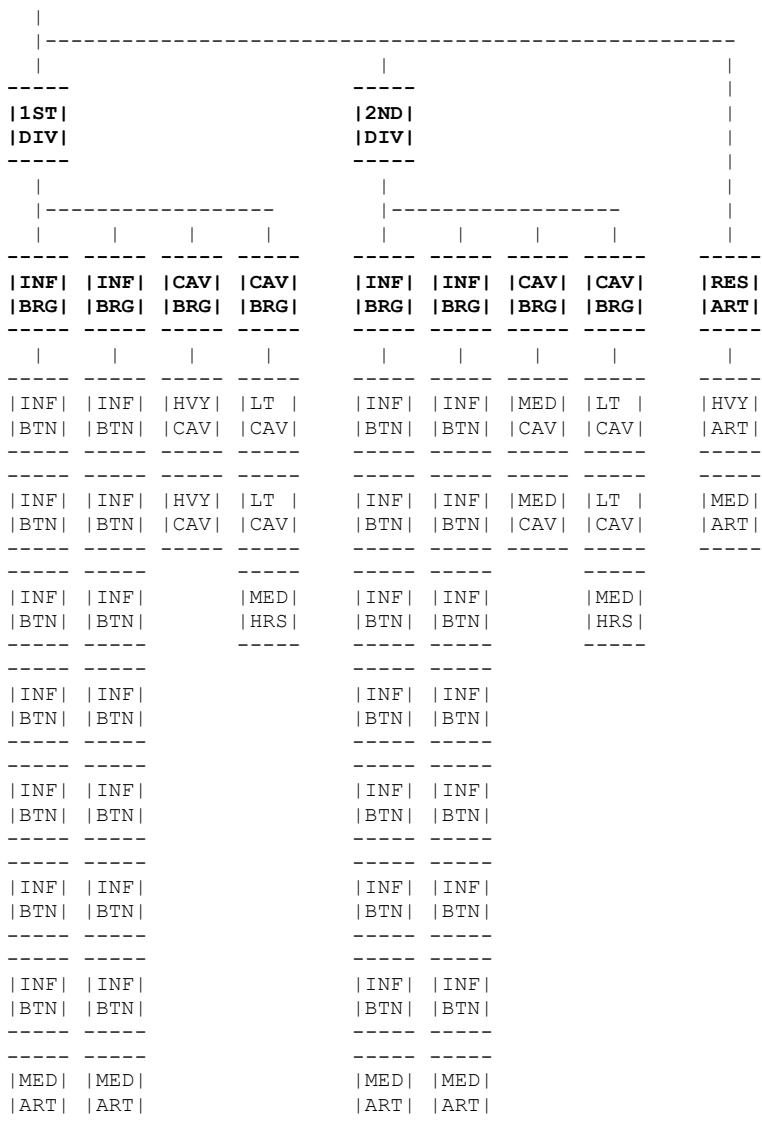
- 10 Battalions
- 5 Cavalry Regiments
- 6 Artillery Batteries

THE KING'S GERMAN LEGION: 1806

Units: Legion (Light Division)

- Infantry Brigade:
- 1) KGL Light Infantry 1st Light, Strength = 6, QR = Veteran
 - 2) KGL Light Infantry 2nd Light, Strength = 6, QR = Veteran
- Infantry Brigade:
- 3) KGL Line Infantry 1st Strength = 6, QR = Average
 - 4) KGL Line Infantry 2nd Strength = 6, QR = Average
 - 5) KGL Foot Artillery 1st Medium Artillery, Strength = 3, QR = Veteran
- Infantry Brigade:
- 6) KGL Line Infantry 3rd Strength = 6, QR = Average
 - 7) KGL Line Infantry 4th Strength = 6, QR = Average
 - 8) KGL Foot Artillery 2nd Medium Artillery, Strength = 3, QR = Veteran
- Infantry Brigade:
- 9) KGL Line Infantry 5th Strength = 6, QR = Average
 - 10) KGL Line Infantry 6th Strength = 6, QR = Average
 - 11) KGL Foot Artillery 3rd Medium Artillery, Strength = 3, QR = Veteran
- Infantry Brigade:
- 12) KGL Line Infantry 7th Strength = 6, QR = Average
 - 13) KGL Line Infantry 8th Strength = 6, QR = Average
 - 14) KGL Foot Artillery 4th Medium Artillery, Strength = 3, QR = Veteran
- Cavalry Brigade:
- 15) KGL Heavy Dragoons 1st Medium Cavalry, Strength = 5, QR = Veteran
 - 16) KGL Heavy Dragoons 2nd Medium Cavalry, Strength = 5, QR = Veteran
 - 17) KGL Horse Artillery 1st Medium Artillery, Strength = 3, QR = Veteran
- Cavalry Brigade:
- 18) KGL Light Dragoons 1st Light Cavalry, Strength = 5, QR = Veteran
 - 19) KGL Light Dragoons 2nd Light Cavalry, Strength = 5, QR = Veteran
 - 20) KGL Light Dragoons 3rd Light Cavalry, Strength = 5, QR = Veteran
 - 21) KGL Horse Artillery 2nd Medium Artillery, Strength = 3, QR = Veteran

 | PRUSSIA | REGULATION CORPS, 1807



Summary:

- 28 Infantry Battalions
- 8 Cavalry Regiments
- 10 Artillery Batteries

PRUSSIAN REGULATION CORPS: 1807

Units: 1st Infantry "Brigade" (Division)

Infantry Brigade:

- 1) Musketeers Strength = 6, QR = Average
- 2) Musketeers Strength = 6, QR = Average
- 3) Musketeers Strength = 6, QR = Average
- 4) Musketeers Strength = 6, QR = Average
- 5) Musketeers Strength = 6, QR = Average
- 6) Musketeers Strength = 6, QR = Average
- 7) Grenadiers Strength = 6, QR = Veteran
- 8) Foot Artillery Medium Artillery, Strength = 4, QR = Average

Infantry Brigade:

- 9) Musketeers Strength = 6, QR = Average
- 10) Musketeers Strength = 6, QR = Average
- 11) Musketeers Strength = 6, QR = Average
- 12) Musketeers Strength = 6, QR = Average
- 13) Musketeers Strength = 6, QR = Average
- 14) Musketeers Strength = 6, QR = Average
- 15) Grenadiers Strength = 6, QR = Veteran
- 16) Foot Artillery Medium Artillery, Strength = 4, QR = Average

Cavalry Brigade:
 17) Cuirassiers Heavy Cavalry, Strength = 6, QR = Veteran
 18) Cuirassiers Heavy Cavalry, Strength = 6, QR = Veteran

Cavalry Brigade:
 19) Hussars Light Cavalry, Strength = 6, QR = Veteran
 20) Hussars Light Cavalry, Strength = 6, QR = Veteran
 21) Horse Artillery Medium Artillery, Strength = 4, QR = Average

Units: 2nd Infantry “Brigade” (Division)

Infantry Brigade:
 1) Musketeers Strength = 6, QR = Average
 2) Musketeers Strength = 6, QR = Average
 3) Musketeers Strength = 6, QR = Average
 4) Musketeers Strength = 6, QR = Average
 5) Musketeers Strength = 6, QR = Average
 6) Musketeers Strength = 6, QR = Average
 7) Grenadiers Strength = 6, QR = Veteran
 8) Foot Artillery Medium Artillery, Strength = 4, QR = Average

Infantry Brigade:
 9) Musketeers Strength = 6, QR = Average
 10) Musketeers Strength = 6, QR = Average
 11) Musketeers Strength = 6, QR = Average
 12) Musketeers Strength = 6, QR = Average
 13) Musketeers Strength = 6, QR = Average
 14) Musketeers Strength = 6, QR = Average
 15) Guard Grenadiers Strength = 6, QR = Veteran
 16) Foot Artillery Medium Artillery, Strength = 4, QR = Average

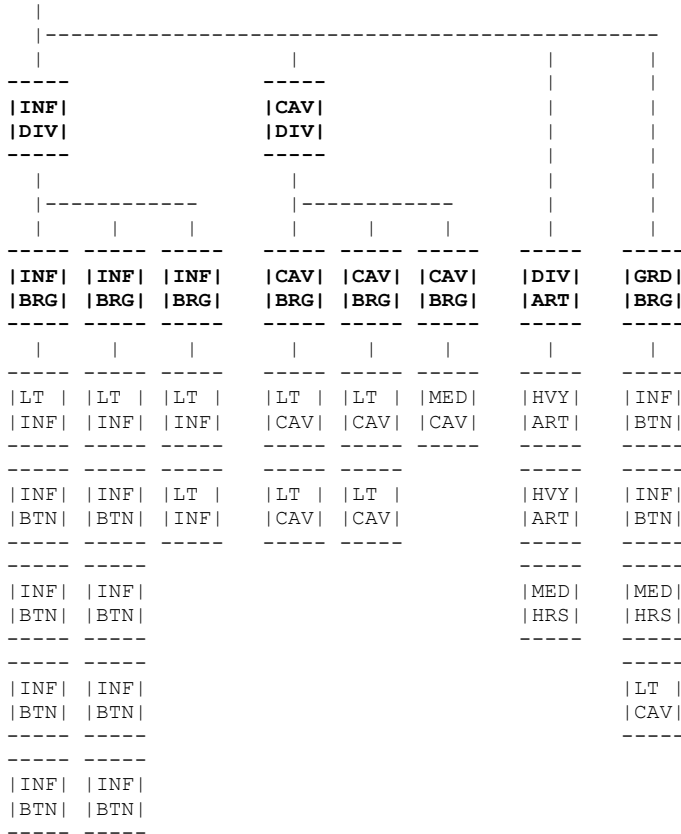
Cavalry Brigade:
 17) Dragoons Medium Cavalry, Strength = 6, QR = Average
 18) Dragoons Medium Cavalry, Strength = 6, QR = Average

Cavalry Brigade:
 19) Hussars Light Cavalry, Strength = 6, QR = Veteran
 20) Hussars Light Cavalry, Strength = 6, QR = Veteran
 21) Horse Artillery Medium Artillery, Strength = 4, QR = Average

Units: Corps Reserve Artillery

1) Foot Artillery Heavy Artillery, Strength = 4, QR = Average
 2) Horse Artillery Medium Artillery, Strength = 4, QR = Average

 | WÜRTTEMBERG | HISTORIC CORPS, 1809



Summary:
 14 Battalions
 6 Cavalry Regiments
 4 Artillery Batteries

A WÜRTTEMBERG CORPS: 1809

Units: Infantry Division:

- Infantry Brigade:
 1) Light Infantry Light, Strength = 7, QR = Average
 2) Line Infantry Strength = 7, QR = Average
 3) Line Infantry Strength = 7, QR = Average
 4) Line Infantry Strength = 7, QR = Average
 5) Line Infantry Strength = 7, QR = Average
- Infantry Brigade:
 6) Light Infantry Light, Strength = 7, QR = Average
 7) Line Infantry Strength = 7, QR = Average
 8) Line Infantry Strength = 7, QR = Average
 9) Line Infantry Strength = 7, QR = Average
 10) Line Infantry Strength = 7, QR = Average
- Infantry Brigade:
 11) Jager Light, Strength = 7, QR = Average
 12) Jager Light, Strength = 7, QR = Average

Units: Cavalry Division:

- Cavalry Brigade:
 1) Chevauleger Light Cavalry, Strength = 4, QR = Average
 2) Chevauleger Light Cavalry, Strength = 4, QR = Average

Cavalry Brigade:

- 3) Chasseurs a Cheval
- 4) Chasseurs a Cheval

Light Cavalry, Strength = 4, QR = Average
Light Cavalry, Strength = 4, QR = Average

Cavalry Brigade:

- 5) Dragoons

Medium Cavalry, Strength = 4, QR = Average

Units: Reserve Artillery

- 1) Foot Artillery
- 2) Foot Artillery
- 3) Horse Artillery

Heavy Artillery, Strength = 3, QR = Average
Heavy Artillery, Strength = 3, QR = Average
Medium Artillery, Strength = 3, QR = Average

Units: Guard Brigade

- 1) Guard Grenadiers
- 2) Guard Chasseurs
- 3) Guard Horse Artillery
- 4) Guard Chevauleger

Light, Strength = 7, QR = Average
Strength = 7, QR = Average
Medium Artillery, Strength = 3, QR = Average
Light Cavalry, Strength = 4, QR = Average