

## Raab: 14 June 1809

### Austrian Forces

ARMY OF INNER AUSTRIA     AT RAAB   PALATIN										
-----										
1ST				2ND				3RD		
DIV				DIV				DIV		
-----										
-----				-----				-----		
CAV	CAV	CAV	DIV	INF	INF	INF	INF	INF	CAV	INF
BRG	BRG	BRG	ART	BRG	BRG	BRG	BRG	BRG	BRG	BRG
-----										
LT	LT	LT	MED	INF	INF	INF	INF	INF	MED	INF
CAV	CAV	CAV	HRS	BTN	BTN	BTN	BTN	BTN	CAV	BTN
-----										
LT	LT	LT		INF	INF	INF	INF	INF	LT	INF
CAV	CAV	CAV		BTN	BTN	BTN	BTN	BTN	CAV	BTN
-----										
LT	LT			INF	INF	INF	INF	LT	LT	INF
CAV	CAV			BTN	BTN	BTN	BTN	INF	CAV	BTN
-----										
LT	LT			INF	INF	INF	INF	LT	LT	INF
CAV	CAV			BTN	BTN	BTN	BTN	INF	CAV	BTN
-----										
				INF	INF		INF	INF	LT	INF
				BTN	BTN		BTN	BTN	CAV	BTN
-----										
				INF	INF		INF	INF		LT
				BTN	BTN		BTN	BTN		CAV
-----										
				INF	INF			MED		LT
				BTN	BTN			ART		CAV
-----										
				INF	INF					MED
				BTN	BTN					HRS
-----										

**Summary:**  
 36 Infantry Battalions  
 17 Cavalry Regiments  
 4 Artillery Batteries

**ARMY OF INNER AUSTRIA at Raab under Palatin**

**Units: 1st Division: Mescery**

- Cavalry Brigade: Gosztiny
- 1) Hussars                    5<sup>th</sup>            Light Cavalry, Strength = 6, QR = Veteran
  - 2) Insurrection Hussars    Ins/1        Light Cavalry, Strength = 7, QR = Raw
  - 3) Insurrection Hussars    Ins/2        Light Cavalry, Strength = 7, QR = Raw
  - 4) Insurrection Hussars    Ins/3        Light Cavalry, Strength = 2, QR = Raw

Cavalry Brigade: Andrasz		
5) Hussars	2 <sup>nd</sup>	Light Cavalry, Strength = 7, QR = Veteran
6) Insurrection Hussars	Ins/4	Light Cavalry, Strength = 5, QR = Raw
7) Insurrection Hussars	Ins/5	Light Cavalry, Strength = 7, QR = Raw
8) Insurrection Hussars	Ins/6	Light Cavalry, Strength = 3, QR = Raw

Cavalry Brigade: Hadik		
9) Insurrection Hussars	Ins/7	Light Cavalry, Strength = 7, QR = Raw
10) Insurrection Hussars	Ins/8	Light Cavalry, Strength = 7, QR = Raw

Division Artillery:		
11) Horse Artillery		Medium Artillery, Strength = 2, QR = Average

#### Units: 2nd Division: Colleredo

Infantry Brigade: Marziani		
1) Line Infantry	62/1	Strength = 3, QR = Average
2) Line Infantry	62/2	Strength = 3, QR = Average
3) Line Infantry	62/3	Strength = 2, QR = Average
4) Insurrection Infantry	Ins/7	Strength = 7, QR = Raw
5) Insurrection Infantry	Ins/8	Strength = 7, QR = Raw
6) Landwehr	Tra	Strength = 3, QR = Raw
7) Landwehr	Vie/1	Strength = 5, QR = Raw
8) Landwehr	Inn/4	Strength = 3, QR = Raw

Infantry Brigade: Lutz		
9) Line Infantry	61/1	Strength = 5, QR = Average
10) Line Infantry	61/2	Strength = 5, QR = Average
11) Line Infantry	61/3	Strength = 4, QR = Average
12) Landwehr	Gra/2	Strength = 5, QR = Raw
13) Landwehr	Gra/4	Strength = 4, QR = Raw
14) Landwehr	Gra/5	Strength = 5, QR = Raw
15) Landwehr	Inn/1	Strength = 2, QR = Raw
16) Foot Artillery		Medium Artillery, Strength = 3, QR = Average

#### Units: 3rd Division: Jellaic

Infantry Brigade: Legisfeld		
1) Landwehr	Kar	Strength = 4, QR = Raw
2) Landwehr	Bru	Strength = 4, QR = Raw
3) Landwehr	Mann	Strength = 4, QR = Raw
4) Landwehr	Vie/2	Strength = 4, QR = Raw

Infantry Brigade: Eckhart		
5) Line Infantry	32/1	Strength = 4, QR = Average
6) Line Infantry	32/2	Strength = 4, QR = Average
7) Line Infantry	32/3	Strength = 4, QR = Average
8) Landwehr	Inn/9	Strength = 2, QR = Raw
9) Landwehr	Inn/5	Strength = 2, QR = Raw
10) Landwehr	Inn/2	Strength = 2, QR = Raw

Infantry Brigade: Sebottendorf		
11) Line Infantry	45/1	Strength = 3, QR = Average
12) Line Infantry	45/2	Strength = 3, QR = Average
13) Grenze	10/1	Light, Strength = 8, QR = Average
14) Grenze	10/1	Light, Strength = 8, QR = Average
15) Landwehr	Salz	Strength = 9, QR = Raw
16) Landwehr	Jude	Strength = 3, QR = Raw
17) Foot Artillery		Medium Artillery, Strength = 3, QR = Average

Cavalry Brigade: Gosztiny		
18) Dragoons	2 <sup>nd</sup>	Medium Cavalry, Strength = 4, QR = Average
19) Hussars	6 <sup>th</sup>	Light Cavalry, Strength = 3, QR = Veteran
20) Combined Chevaulegers	CCh	Light Cavalry, Strength = 3, QR = Average
21) Insurrection Cavalry	Sza	Light Cavalry, Strength = 4, QR = Raw
22) Insurrection Cavalry	Sum	Light Cavalry, Strength = 4, QR = Raw

Infantry Brigade: Davidovich		
23) Line Infantry	Ins/1	Strength = 7, QR = Raw
24) Line Infantry	Ins/3	Strength = 7, QR = Raw
25) Line Infantry	Ins/4	Strength = 7, QR = Raw
26) Line Infantry	Ins/6	Strength = 7, QR = Raw
27) Line Infantry	Ins/10	Strength = 7, QR = Raw
28) Insurrection Cavalry	Pres	Light Cavalry, Strength = 3, QR = Raw
29) Insurrection Cavalry	Neog	Light Cavalry, Strength = 3, QR = Raw
30) Horse Artillery		Medium Artillery, Strength = 2, QR = Average

```

-----
| AUSTRIAN RESERVE DIVISION |
| AT RAAB                    | FRIMONT
-----

```

```

-----
| INF |
| DIV |
-----

```

```

-----
| INF | | INF | | INF | | DIV |
| BRG | | BRG | | BRG | | ART |
-----

```

```

-----
| INF | | INF | | LT | | HVY |
| BTN | | BTN | | INF | | ART |
-----

```

```

-----
| INF | | INF | | HVY |
| BTN | | BTN | | ART |
-----

```

```

-----
| LT | | INF |
| INF | | BTN |
-----

```

```

-----
| LT | | INF |
| BTN | | BTN |
-----

```

```

-----
| INF | | INF |
| BTN | | BTN |
-----

```

```

-----
| INF | | INF |
| BTN | | BTN |
-----

```

```

-----
| INF |
| BTN |
-----

```

**Summary:**

- 13 Infantry Battalions
- 0 Cavalry Regiments
- 2 Artillery Batteries

**AUSTRIAN RESERVE DIVISION at Raab under Frimont**

Infantry Brigade: Gajoli

- 1) Line Infantry 16/1 Strength = 8, QR = Average
- 2) Line Infantry 16/2 Strength = 8, QR = Average
- 3) Grenze 3/1 Light, Strength = 5, QR = Average
- 4) Grenze 3/2 Light, Strength = 5, QR = Average
- 5) Landwehr Cill Strength = 8, QR = Raw

Infantry Brigade: Kleinmeyer

- 6) Line Infantry 19/1 Strength = 8, QR = Average
- 7) Line Infantry 19/2 Strength = 8, QR = Average
- 8) Line Infantry 19/3 Strength = 8, QR = Average
- 9) Grenadiers Sal Strength = 6, QR = Veteran
- 10) Grenadiers Jan Strength = 6, QR = Veteran
- 11) Grenadiers Chi Strength = 6, QR = Veteran
- 12) Grenadiers Muh Strength = 6, QR = Veteran

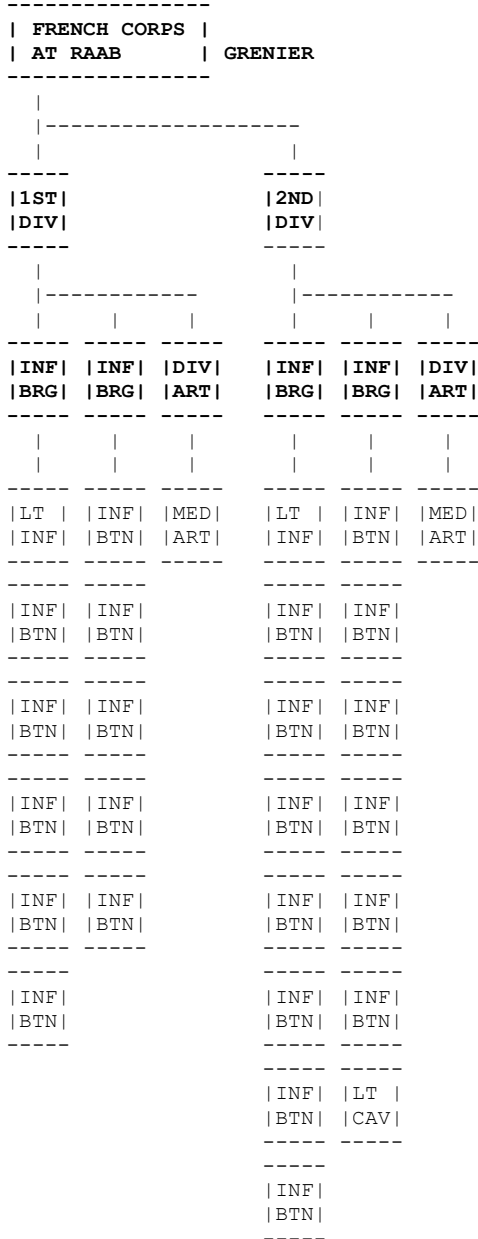
Infantry Brigade: Ottingshausen

- 13) Grenze 9<sup>th</sup> Light, Strength = 6, QR = Average

Division Artillery:

- 14) Foot Artillery Heavy Artillery, Strength = 3, QR = Average
- 15) Foot Artillery Heavy Artillery, Strength = 3, QR = Average

## Raab: 14 June 1809 French Forces



**Summary:**  
 25 Infantry Battalions  
 1 Cavalry Regiment  
 2 Artillery Batteries

### FRENCH CORPS at Raab under Grenier

**Units: 1st Division: Seras**

- Infantry Brigade: Garraud
- |                   |                 |                                   |
|-------------------|-----------------|-----------------------------------|
| 1) Light Infantry | 1 <sup>st</sup> | Light, Strength = 7, QR = Average |
| 2) Line Infantry  | 35/4            | Strength = 10, QR = Average       |
| 3) Line Infantry  | 53/1            | Strength = 6, QR = Average        |
| 4) Line Infantry  | 53/2            | Strength = 6, QR = Average        |
| 5) Line Infantry  | 53/3            | Strength = 5, QR = Average        |
| 6) Line Infantry  | 53/4            | Strength = 5, QR = Average        |

## Infantry Brigade: Roussel

7) Line Infantry	42/4	Strength = 7, QR = Average
8) Line Infantry	106/1	Strength = 6, QR = Average
9) Line Infantry	106/2	Strength = 6, QR = Average
10) Line Infantry	106/3	Strength = 5, QR = Average
11) Line Infantry	106/4	Strength = 5, QR = Average

## Division Artillery

12) Foot Artillery	Medium Artillery, Strength = 3, QR = Average
--------------------	--

**Units: 2nd Division: Durette**

## Infantry Brigade: Valentin

1) Light Infantry	22 <sup>nd</sup>	Light, Strength = 7, QR = Average
2) Line Infantry	23/1	Strength = 4, QR = Average
3) Line Infantry	23/2	Strength = 4, QR = Average
4) Line Infantry	23/3	Strength = 4, QR = Average
5) Line Infantry	23/4	Strength = 4, QR = Average
6) Line Infantry	60/1	Strength = 7, QR = Average
7) Line Infantry	60/1	Strength = 7, QR = Average
8) Line Infantry	60/1	Strength = 7, QR = Average

## Infantry Brigade: Bruch

9) Line Infantry	62/1	Strength = 7, QR = Average
10) Line Infantry	62/2	Strength = 7, QR = Average
11) Line Infantry	62/3	Strength = 6, QR = Average
12) Line Infantry	102/1	Strength = 7, QR = Average
13) Line Infantry	102/2	Strength = 7, QR = Average
14) Line Infantry	102/3	Strength = 7, QR = Average
15) Chasseurs a Cheval	6 <sup>th</sup>	Light Cavalry, Strength = 5, QR = Average

## Division Artillery:

16) Foot Artillery	Medium Artillery, Strength = 3, QR = Average
--------------------	--

```

-----
| ATTACHED DIVISION |
| AT RAAB           | d'HILLIER
-----

```

```

-----
| | | |
| | | |
-----
| INF | | INF | | DIV | | ATT |
| BRG | | BRG | | ART | | BRG |
-----
| | | |
| | | |
-----
| INF | | INF | | MED | | MED |
| BTN | | BTN | | ART | | CAV |
-----
| INF | | INF | | MED |
| BTN | | BTN | | CAV |
-----
| INF | | INF | | MED |
| BTN | | BTN | | CAV |
-----
| INF | | INF |
| BTN | | BTN |
-----
| INF | | INF |
| BTN | | BTN |
-----
| INF | | MED |
| BTN | | CAV |
-----
| INF |
| BTN |
-----
| INF |
| BTN |
-----

```

**Summary:**  
 13 Infantry Battalions  
 4 Cavalry Regiments  
 1 Artillery Batteries

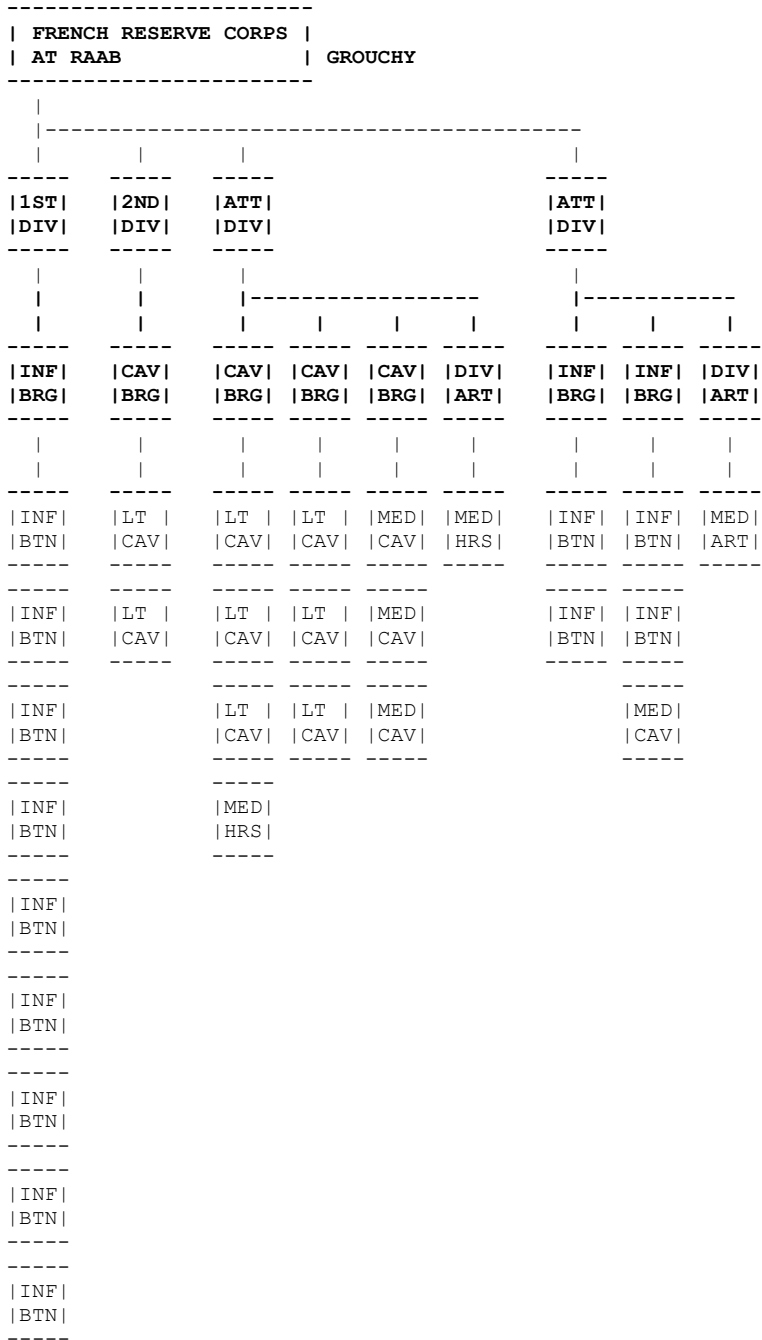
**ATTACHED DIVISION at Raab under d'Hillier**

**Units: Infantry Division (Italian): Severoli**

- Infantry Brigade (Italian):
- 1) Line Infantry 1/1 Strength = 7, QR = Average
  - 2) Line Infantry 1/2 Strength = 7, QR = Average
  - 3) Line Infantry 1/3 Strength = 6, QR = Average
  - 4) Line Infantry 2/1 Strength = 6, QR = Average
  - 5) Line Infantry 3/1 Strength = 6, QR = Average
  - 6) Line Infantry 3/2 Strength = 5, QR = Average
  - 7) Line Infantry 3/3 Strength = 5, QR = Average
  - 8) Line Infantry 3/4 Strength = 5, QR = Average
- Infantry Brigade (Italian):
- 9) Line Infantry 7/1 Strength = 7, QR = Average
  - 10) Dalmatian Line Infantry D/1 Strength = 5, QR = Average
  - 11) Line Infantry 112/1 Strength = 6, QR = Average
  - 12) Line Infantry 112/2 Strength = 6, QR = Average
  - 13) Line Infantry 112/3 Strength = 6, QR = Average
  - 14) Dragoons ItDr Medium Cavalry, Strength = 5, QR = Average
- Division Artillery
- 15) Italian Foot Artillery Medium Artillery, Strength = 3, QR = Average

Attached Cavalry Brigade: Pully

16) Dragoons	23 <sup>rd</sup>	Medium Cavalry, Strength = 6, QR = Average
17) Dragoons	28 <sup>th</sup>	Medium Cavalry, Strength = 4, QR = Average
18) Dragoons	29 <sup>th</sup>	Medium Cavalry, Strength = 6, QR = Average



**Summary:**  
 13 Battalions  
 12 Cavalry Regiments  
 3 Artillery Batteries

**FRENCH RESERVE CORPS at Raab under Grouchy**

**Units: Infantry Division: Pachtod**

- Infantry Brigade:
- 1) Light Infantry 8/1 Light, Strength = 5, QR = Average
  - 2) Light Infantry 8/2 Light, Strength = 5, QR = Average
  - 3) Line Infantry 1/1 Strength = 6, QR = Average
  - 4) Line Infantry 1/2 Strength = 6, QR = Average
  - 5) Line Infantry 1/3 Strength = 6, QR = Average
  - 6) Line Infantry 52/1 Strength = 5, QR = Average
  - 7) Line Infantry 52/2 Strength = 5, QR = Average
  - 8) Line Infantry 52/3 Strength = 5, QR = Average
  - 9) Line Infantry 52/4 Strength = 5, QR = Average



**Units: Light Cavalry Division: Sahuc**

## Cavalry Brigade:

- |                       |                  |   |
|-----------------------|------------------|---|
| 1) Chasseurs a Cheval | 18 <sup>th</sup> | Light Cavalry, Strength = 8, QR = Average |
| 2) Chasseurs a Cheval | 25 <sup>th</sup> | Light Cavalry, Strength = 5, QR = Average |

**Units: Cavalry Reserve Division: Montbrun**

## Cavalry Brigade: Jacquinot

- |                       |                 |   |
|-----------------------|-----------------|---|
| 1) Chasseurs a Cheval | 1 <sup>st</sup> | Light Cavalry, Strength = 4, QR = Average   |
| 2) Chasseurs a Cheval | 2 <sup>nd</sup> | Light Cavalry, Strength = 4, QR = Average   |
| 3) Hussars            | 7 <sup>th</sup> | Light Cavalry, Strength = 5, QR = Average   |
| 4) Horse Artillery    |                 | Light Artillery, Strength = 3, QR = Average |

## Cavalry Brigade: Colbert

- |                       |                  |   |
|-----------------------|------------------|---|
| 5) Chasseurs a Cheval | 7 <sup>th</sup>  | Light Cavalry, Strength = 6, QR = Average |
| 6) Chasseurs a Cheval | 20 <sup>th</sup> | Light Cavalry, Strength = 5, QR = Average |
| 7) Hussars            | 9 <sup>th</sup>  | Light Cavalry, Strength = 7, QR = Average |

## Cavalry Brigade: Guedin

- |                     |                  |   |
|---------------------|------------------|---|
| 8) Dragoons         | 7 <sup>th</sup>  | Medium Cavalry, Strength = 6, QR = Average  |
| 9) Dragoons         | 30 <sup>th</sup> | Medium Cavalry, Strength = 9, QR = Average  |
| 10) Queens Dragoons | QDr              | Medium Cavalry, Strength = 7, QR = Veteran  |
| 11) Horse Artillery |                  | Light Artillery, Strength = 3, QR = Average |

**Units: Army Reserve Division (Italian Guard): Lecchi**

## Infantry Brigade: Fontanelli

- |                         |     |                                   |
|-------------------------|-----|-----------------------------------|
| 1) Guard Light Infantry | IGL | Light, Strength = 6, QR = Average |
| 2) Guard d'Honneur      | IG  | Strength = 2 QR = Average         |

## Infantry Brigade: Lecchi

- |                     |     |   |
|---------------------|-----|---|
| 3) Guard Chasseurs  | IGC | Strength = 4, QR = Average                |
| 4) Guard Grenadiers | IGG | Strength = 4, QR = Average                |
| 5) Guard Dragoons   | IGD | Light Cavalry, Strength = 4, QR = Average |

## Division Artillery:

- |                          |  |  |
|--------------------------|--|--|
| 6) Guard Horse Artillery |  | Medium Artillery, Strength = 3, QR = Average |
|--------------------------|--|--|