

Quatre Bras: 16 June 1815

Anglo-Allied Forces

```

-----
| 1ST CORPS |
| AT QUATRE BRAS | PRINCE OF ORANGE
-----

```

(continued)--->>

1ST DIV Cooke	2ND DIV Altern	5TH DIV Picton	6TH Hanoverian DIV Cole
INF DIV BRG ART	INF INF DIV BRG BRG ART	INF INF DIV BRG BRG ART	INF BRG
INF MED BTN ART	INF INF MED BTN BTN ART	INF LT MED BTN INF ART	INF BTN
INF MED BTN HRS	INF INF MED BTN BTN ART	INF LT MED BTN INF ART	INF BTN
	INF INF BTN BTN	INF INF BTN BTN	INF BTN
	INF INF BTN INF	LT LT INF INF	INF BTN
	LT INF		
	LT INF		

```

>>-----
|
|-----
|INF| Dutch-Belgian      |INF| Brunswick
|DIV| Perponcher        |DIV| Duke of Brunswick
|-----
|
|-----
|INF| |INF| |CAV| |DIV| |INF| |INF| |INF| |CAV| |DIV|
|BRG| |BRG| |BRG| |ART| |BRG| |BRG| |BRG| |BRG| |ART|
|-----
|
|-----
|INF| |INF| |LT | |MED| |LT | |LT | |INF| |LT | |MED|
|BTN| |BTN| |CAV| |ART| |INF| |INF| |BTN| |CAV| |ART|
|-----
|
|-----
|LT | |INF| |LT | |MED| |LT | |INF| |LT | |MED|
|INF| |BTN| |CAV| |ART| |INF| |BTN| |CAV| |HRS|
|-----
|
|-----
|INF| |INF| |MED| |LT | |INF|
|BTN| |BTN| |HRS| |INF| |BTN|
|-----
|
|-----
|INF| |INF| |LT |
|BTN| |BTN| |INF|
|-----
|
|-----
|INF| |INF|
|BTN| |BTN|
|-----
|
|-----
|LT |
|INF|
|-----

```

Summary:

43 Battalions
 4 Cavalry Regiments
 10 Artillery Batteries

ANGLO-ALLIED FORCES at QUATRE BRAS under Prince of Orange

1st Division (Guards): Cooke

2nd Guard Infantry Brigade: Byng

1) Guard Infantry	2/2	Light, Strength = 10, QR = Veteran
2) Guard Infantry	3/2	Light, Strength = 11, QR = Veteran

Division Artillery:

3) British Foot Artillery	Medium Artillery, Strength = 3, QR = Veteran
4) British Horse Artillery	Medium Artillery, Strength = 3, QR = Veteran

Units: 3rd Division: Altern

5th Infantry Brigade: Halkett

1) Line Infantry	30/2	Strength = 7, QR = Average
2) Line Infantry	33 rd	Strength = 6, QR = Average
3) Line Infantry	69/2	Strength = 6, QR = Average
4) Line Infantry	73/2	Strength = 6, QR = Average

1st Infantry Brigade (Hanoverian): Kielmansegge

5) Line Infantry	Brem	Strength = 6, QR = Average
6) Line Infantry	Verd	Strength = 6, QR = Average
7) Light Infantry	York	Light, Strength = 7, QR = Average
8) Line Infantry	Lune	Strength = 6, QR = Average
9) Jager	Grub	Light, Strength = 7, QR = Average
10) Jager	Kiel	Light, Strength = 4, QR = Average

Division Artillery:

11) British Foot Artillery	Medium Artillery, Strength = 3, QR = Veteran
12) KGL Foot Artillery	Medium Artillery, Strength = 3, QR = Veteran

Units: 5th Division: Picton

8th Infantry Brigade: Kempt

- | | | |
|-------------------|-------|-----------------------------------|
| 1) Line Infantry | 28/1 | Strength = 6, QR = Average |
| 2) Line Infantry | 32/1 | Strength = 7, QR = Average |
| 3) Line Infantry | 79/1 | Strength = 8, QR = Average |
| 4) Light Infantry | 95R/1 | Light, Strength = 6, QR = Veteran |

9th Infantry Brigade: Pack

- | | | |
|-------------------|------|-----------------------------------|
| 5) Light Infantry | 1/3 | Light, Strength = 7, QR = Average |
| 6) Light Infantry | 42/1 | Light, Strength = 6, QR = Average |
| 7) Line Infantry | 44/2 | Strength = 5, QR = Average |
| 8) Light Infantry | 92/1 | Light, Strength = 6, QR = Average |

Division Artillery:

- | | | |
|-------------------------------|--|--|
| 9) British Foot Artillery | | Medium Artillery, Strength = 3, QR = Veteran |
| 10) Hanoverian Foot Artillery | | Medium Artillery, Strength = 3, QR = Average |

Units: 6th Division: Cole

4th Hanoverian Infantry Brigade: Best

- | | | |
|-------------|------|------------------------|
| 1) Landwehr | Verd | Strength = 7, QR = Raw |
| 2) Landwehr | Lune | Strength = 7, QR = Raw |
| 3) Landwehr | Ost | Strength = 7, QR = Raw |
| 4) Landwehr | Mund | Strength = 7, QR = Raw |

Units: 2nd Dutch-Belgian Division: Perponcher

1st Infantry Brigade (Dutch- Belgian): Bijlandt

- | | | |
|------------------|------------------|-----------------------------------|
| 1) Line Infantry | 7 th | Strength = 7, QR = Average |
| 2) Jager | 27 th | Light, Strength = 8, QR = Average |
| 3) Militia | 5 th | Strength = 5, QR = Raw |
| 4) Militia | 7 th | Strength = 7, QR = Raw |
| 5) Militia | 8 th | Strength = 6, QR = Raw |

2nd Infantry Brigade (Nassau): Saxe-Weimar

- | | | |
|-------------------|------|------------------------------|
| 6) Line Infantry | 2/1 | Strength = 9, QR = Average |
| 7) Line Infantry | 2/2 | Strength = 9, QR = Average |
| 8) Line Infantry | 2/3 | Strength = 9, QR = Average |
| 9) Line Infantry | ON/1 | Strength = 8, QR = Average |
| 10) Line Infantry | ON/2 | Strength = 8, QR = Average |
| 11) Jager | ON/J | Light, Strength = 2, Average |

Attached Cavalry Brigade (Dutch): Merlin

- | | | |
|---------------------------|-----------------|--|
| 13) Dutch Hussars | 6 th | Light Cavalry, Strength = 7, QR = Average |
| 12) Dutch Light Dragoons | 5 th | Light Cavalry, Strength = 5, QR = Average |
| 14) Dutch Horse Artillery | | Medium Artillery, Strength = 2, QR = Average |

Division Artillery:

- | | | |
|----------------------------|--|--|
| 15) Dutch Foot Artillery | | Medium Artillery, Strength = 4, QR = Average |
| 16) Belgian Foot Artillery | | Medium Artillery, Strength = 4, QR = Average |

Units: Brunswick Corps (Division): Duke of Brunswick

Advanced Guard: Rauschenplatt

- | | | |
|----------|---|-----------------------------------|
| 1) Jager | J | Light, Strength = 7, QR = Average |
|----------|---|-----------------------------------|

1st Infantry Brigade: Buttlar

- | | | |
|-------------------|-----------------|-----------------------------------|
| 2) Guard Infantry | Grd | Light, Strength = 7, QR = Average |
| 3) Light Infantry | 1 st | Light, Strength = 7, QR = Average |
| 4) Light Infantry | 2 nd | Light, Strength = 7, QR = Average |
| 5) Light Infantry | 3 rd | Light, Strength = 7, QR = Average |

2nd Infantry Brigade: Specht

- | | | |
|------------------|-----------------|----------------------------|
| 6) Line Infantry | 1 st | Strength = 7, QR = Average |
| 7) Line Infantry | 2 nd | Strength = 7, QR = Average |
| 8) Line Infantry | 3 rd | Strength = 7, QR = Average |

Cavalry Brigade:

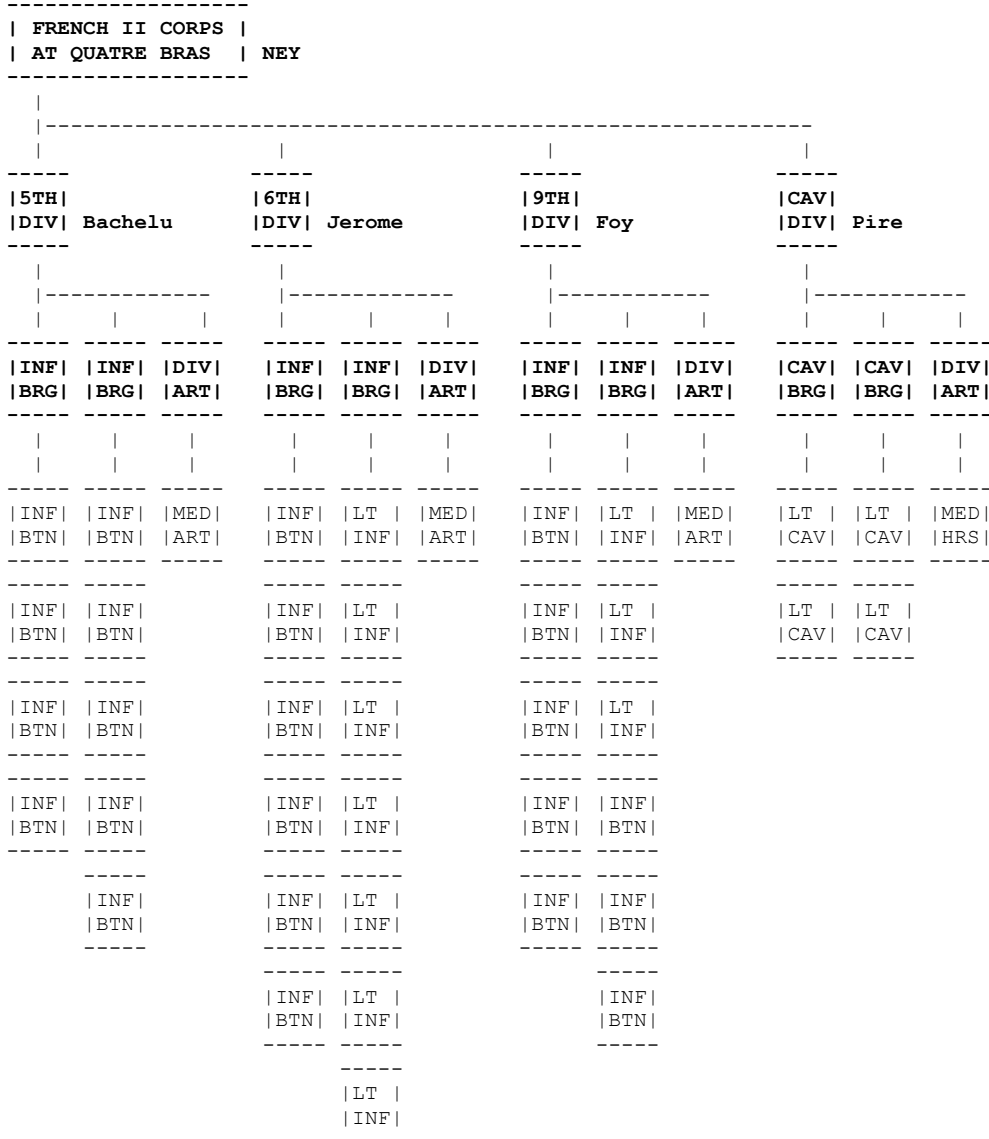
- | | | |
|----------------------|-----------------|--|
| 9) Brunswick Hussars | 7 th | Light Cavalry, Strength = 7, QR = Average |
| 10) Brunswick Uhlans | 2 nd | Light Cavalry, Lance armed, Strength = 3, QR = Average |

Division Artillery:

- | | | |
|-------------------------------|--|--|
| 11) Brunswick Foot Artillery | | Medium Artillery, Strength = 4, QR = Average |
| 12) Brunswick Horse Artillery | | Medium Artillery, Strength = 4, QR = Average |

Quatre Bras: 16 June 1815

French Forces



Summary:

- 33 Infantry Battalions
- 4 Cavalry Regiments
- 4 Artillery Batteries

FRENCH II CORPS at QUATRE BRAS under Ney

Units: 5th Infantry Division: Bachelu

Infantry Brigade: Husson

- 1) Line Infantry 3/1 Strength = 6, QR = Average
- 2) Line Infantry 3/2 Strength = 6, QR = Average
- 3) Line Infantry 61/1 Strength = 6, QR = Average
- 4) Line Infantry 61/2 Strength = 6, QR = Average

Infantry Brigade: Campi

- 5) Line Infantry 72/1 Strength = 5, QR = Average
- 6) Line Infantry 72/2 Strength = 5, QR = Average
- 7) Line Infantry 108/1 Strength = 4, QR = Average
- 8) Line Infantry 108/2 Strength = 4, QR = Average
- 9) Line Infantry 108/3 Strength = 4, QR = Average

Division Artillery:

10) Foot Artillery Medium Artillery, Strength = 4, QR = Average

Units: 6th Infantry Division: Jerome

Infantry Brigade: Soye

1) Line Infantry	1/1	Strength = 6, QR = Average
2) Line Infantry	1/2	Strength = 6, QR = Average
3) Line Infantry	1/3	Strength = 6, QR = Average
4) Line Infantry	3/1	Strength = 6, QR = Average
5) Line Infantry	3/2	Strength = 6, QR = Average
6) Line Infantry	3/3	Strength = 6, QR = Average

Infantry Brigade: Bauduin

7) Light Infantry	1/1	Light, Strength = 6, QR = Average
8) Light Infantry	1/2	Light, Strength = 6, QR = Average
9) Light Infantry	1/3	Light, Strength = 6, QR = Average
10) Light Infantry	2/1	Light, Strength = 6, QR = Average
11) Light Infantry	2/2	Light, Strength = 6, QR = Average
12) Light Infantry	2/3	Light, Strength = 6, QR = Average
13) Light Infantry	2/4	Light, Strength = 6, QR = Average

Division Artillery:

14) Foot Artillery Medium Artillery, Strength = 4, QR = Average

Units: 9th Infantry Division: Foy

Infantry Brigade: Gauthier

1) Line Infantry	92/1	Strength = 7, QR = Average
2) Line Infantry	92/2	Strength = 7, QR = Average
3) Line Infantry	93/1	Strength = 5, QR = Average
4) Line Infantry	93/2	Strength = 5, QR = Average
5) Line Infantry	93/3	Strength = 5, QR = Average

Infantry Brigade: Jamin

6) Line Infantry	100/1	Strength = 4, QR = Average
7) Line Infantry	100/2	Strength = 4, QR = Average
8) Line Infantry	100/3	Strength = 3, QR = Average
9) Light Infantry	4/1	Light, Strength = 6, QR = Average
10) Light Infantry	4/2	Light, Strength = 6, QR = Average
11) Light Infantry	4/3	Light, Strength = 6, QR = Average

Division Artillery:

12) Foot Artillery Medium Artillery, Strength = 4, QR = Average

Units: Cavalry Division: Pire

Cavalry Brigade: Hubert

1) Chasseurs a Cheval	1 st	Light Cavalry, Strength = 5, QR = Average
2) Chasseurs a Cheval	6 th	Light Cavalry, Strength = 6, QR = Average

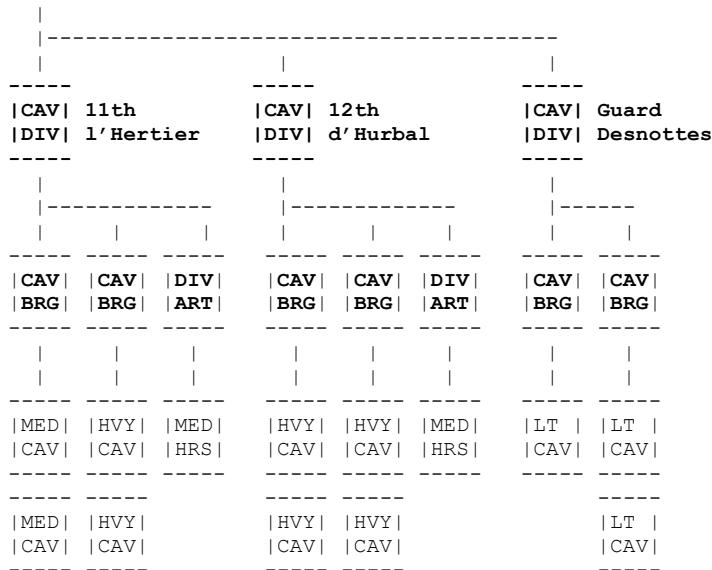
Cavalry Brigade: Wathiez

3) Lancers	5 th	Light Cavalry, Lance armed, Strength = 5, QR = Average
4) Lancers	6 th	Light Cavalry, Lance armed, Strength = 5, QR = Average

Division Artillery:

5) Horse Artillery Medium Artillery, Strength = 4, QR = Average

 | FRENCH RESERVE CAVALRY CORPS |
 | AT QUATRE BRAS | KELLERMAN



Summary:

11 Cavalry Regiments
 2 Artillery Batteries

THE FRENCH RESERVE CAVALRY CORPS at QUATRE BRAS under Kellerman

Note: These units arrived late in dribs and drabs.

Units: 11th Cavalry Division: l'Hertier

Cavalry Brigade: Picquet

- 1) Dragoons 2nd Medium Cavalry, Strength = 6, QR = Average
- 2) Dragoons 7th Medium Cavalry, Strength = 5, QR = Average

Cavalry Brigade: Guiton

- 3) Cuirassiers 8th Heavy Cavalry, Strength = 4, QR = Veteran
- 4) Cuirassiers 11th Heavy Cavalry, Strength = 4, QR = Veteran

Division Artillery:

- 5) Horse Artillery Medium Artillery, Strength = 4, QR = Average

Units: 12th Cavalry Division: d'Hurbal

Cavalry Brigade: Blanchard

- 1) Carabiniers 1st Heavy Cavalry, Strength = 4, QR = Veteran
- 2) Carabiniers 2nd Heavy Cavalry, Strength = 4, QR = Veteran

Cavalry Brigade: Donop

- 3) Cuirassiers 2nd Heavy Cavalry, Strength = 4, QR = Veteran
- 4) Cuirassiers 3rd Heavy Cavalry, Strength = 5, QR = Veteran

Division Artillery:

- 5) Horse Artillery Medium Artillery, Strength = 4, QR = Average

Units: Guard Cavalry Division: Desnottes

Guard Cavalry Brigade: Lallemand

- 1) Guard Chasseurs a Cheval Light Cavalry, Strength = 12, QR = Veteran

Guard Cavalry Brigade: Chabanais

- 2) Polish Guard Lancers Light Cavalry, Lance armed, Strength = 2, QR = Veteran
- 3) Red Lancers Light Cavalry, Lance armed, Strength = 7, QR = Veteran

Quatre Bras: 16 June 1815

SET UP:

For the Allies:

Only Picton's Division, Cole's Division and Perponcher's Division

For the French:

Only, Bachelu's Division, Jerome's Division and Foy's Division

ARRIVALS:

At the start of:

- Turn 1 No arrivals. French get the first initiative.
- Turn 2 Brunswick Division arrives.
- Turn 3 Pire's Light Cavalry Division arrives.
- Turn 4 Altern's Division arrives.
- Turn 5 Cooke's Guard Division arrives.
- Turn 6 Kellerman's 12th Cavalry Division arrives.
- Turn 7 Kellerman arrives with the remainder of the reserve cavalry corps.
- Turn 8 No arrivals.
- Turn 9 No arrivals.

Game ends at the end of Turn 9.