

Infantry Brigade:

- 8) Musketeers Strength = 4, QR = Average
- 9) Musketeers Strength = 4, QR = Average
- 10) Musketeers Strength = 4, QR = Average
- 11) Musketeers Strength = 4, QR = Average
- 12) Musketeers Strength = 4, QR = Average
- 13) Musketeers Strength = 4, QR = Average
- 14) Foot Artillery Medium Artillery, Strength = 4, QR = Average

Infantry Brigade:

- 15) Jaeger Light, Strength = 4, QR = Average
- 16) Guard Light, Strength = 4, QR = Average

Division Artillery:

- 17) Foot Artillery Heavy Artillery, Strength = 4, QR = Average
- 18) Foot Artillery Medium Artillery, Strength = 4, QR = Average

Units: Cavalry Division

Cavalry Brigade:

- 1) Light Dragoons Light Cavalry, Strength = 5, QR = Average
- 2) Hussars Light Cavalry, Strength = 5, QR = Average
- 3) Horse Artillery Medium Artillery, Strength = 3, QR = Average

Archduchy of Berg: 1808

 | ARCHDUCHY OF BERG | Troops raised by the Archduchy of Berg in 1808

|LT | Hypothetical
DIV

|INF| |INF| |CAV|
 |BRG| |BRG| |BRG|

|LT | |INF| |LT |
 |INF| |BTN| |CAV|

|LT | |INF| |LT |
 |INF| |BTN| |CAV|

|LT | |INF| |MED|
 |INF| |BTN| |HRS|

|INF|
BTN

|INF|
BTN

|INF|
BTN

|MED|
ART

Summary:

- 9 Battalions
- 2 Cavalry Regiments
- 2 Artillery Batteries

HYPOTHETICAL LIGHT DIVISION FOR THE ARCHDUCHY OF BERG: 1808

Units: Light Division

Infantry Brigade:

- | | |
|-------------------|-----------------------------------|
| 1) Light Infantry | Light, Strength = 4, QR = Average |
| 2) Light Infantry | Light, Strength = 4, QR = Average |
| 3) Light Infantry | Light, Strength = 4, QR = Average |

Infantry Brigade:

- | | |
|--------------------|--|
| 4) Line Infantry | Strength = 6, QR = Average |
| 5) Line Infantry | Strength = 6, QR = Average |
| 6) Line Infantry | Strength = 6, QR = Average |
| 7) Line Infantry | Strength = 6, QR = Average |
| 8) Line Infantry | Strength = 6, QR = Average |
| 9) Line Infantry | Strength = 6, QR = Average |
| 10) Foot Artillery | Medium Artillery, Strength = 4, QR = Average |

Cavalry Brigade:

- | | |
|---------------------|--|
| 11) Chevauleger | Light Cavalry, Strength = 4, QR = Average |
| 12) Lancers | Light Cavalry, Strength = 4, QR = Average |
| 13) Horse Artillery | Medium Artillery, Strength = 3, QR = Average |

Grand Duchy of Hesse-Darmstadt: 1806

 | GRAND DUCHY OF HESSE-DARMSTADT | Troops raised by the Grand Duchy of Hesse-Darmstadt in 1806

|

 |LT | Hypothetical
DIV

|

 | | | |

 |INF| |INF| |INF| |CAV|
 |BRG| |BRG| |BRG| |BRG|

| | | |

 |LT | |INF| |INF| |LT |
 |INF| |BTN| |BTN| |CAV|

|LT | |INF| |INF| |LT |
 |INF| |BTN| |BTN| |CAV|

|LT | |INF| |INF| |MED|
 |INF| |BTN| |BTN| |HRS|

 |MED|
ART

Summary:

- 9 Battalions
- 2 Cavalry Regiments
- 2 Artillery Batteries

HYPOTHETICAL LIGHT DIVISION FOR THE GRAND DUCHY OF HESSE-DARMSTADT: 1806

Units: Light Division

Infantry Brigade:

- | | |
|-------------------|-----------------------------------|
| 1) Light Infantry | Light, Strength = 6, QR = Average |
| 2) Line Infantry | Strength = 6, QR = Average |
| 3) Line Infantry | Strength = 6, QR = Average |

Infantry Brigade:

- | | |
|-------------------|--|
| 4) Light Infantry | Light, Strength = 6, QR = Average |
| 5) Line Infantry | Strength = 6, QR = Average |
| 6) Line Infantry | Strength = 6, QR = Average |
| 7) Foot Artillery | Medium Artillery, Strength = 3, QR = Average |

Infantry Brigade:

- | | |
|-------------------|-----------------------------------|
| 8) Light Infantry | Light, Strength = 6, QR = Average |
| 9) Guard | Strength = 6, QR = Average |
| 10) Line Infantry | Strength = 6, QR = Average |

Cavalry Brigade:

- | | |
|---------------------|--|
| 11) Chevauleger | Light Cavalry, Strength = 4, QR = Average |
| 12) Chevauleger | Light Cavalry, Strength = 4, QR = Average |
| 13) Horse Artillery | Medium Artillery, Strength = 3, QR = Average |

Kingdom of Naples: 1809

Based in the central and southern coasts of Italy

 | KINGDOM OF NAPLES | Historic

1ST		2ND		3RD		4TH		5TH		CAV	
DIV		DIV		DIV		DIV		DIV		DIV	
INF		INF		INF		INF		INF		CAV	
BRG		BRG		BRG		BRG		BRG		BRG	
LT		INF		INF		INF		INF		LT	
INF		BTN		BTN		BTN		BTN		CAV	
LT		INF		INF		INF		INF		LT	
INF		BTN		BTN		BTN		BTN		CAV	
INF		INF		INF		INF		INF		LT	
BTN		BTN		BTN		BTN		BTN		CAV	
INF		INF		MED		INF		INF			
BTN		BTN		ART		BTN		BTN			
INF		INF				MED		INF			
BTN		BTN				ART		BTN			
INF		INF		MED				INF			
BTN		BTN		ART				BTN			
MED		LT						MED			
ART		ART						ART			

Summary:

43 Infantry Battalions
 3 Cavalry Regiments
 8 Artillery Batteries

THE ARMY OF THE KINGDOM OF NAPLES in 1809 under King Joachim Murat

Units: 1st Infantry Division (French)

Infantry Brigade (French):

- | | |
|-------------------|-----------------------------------|
| 1) Light Infantry | Light, Strength = 6, QR = Average |
| 2) Light Infantry | Light, Strength = 6, QR = Average |
| 3) Line Infantry | Strength = 6, QR = Average |
| 4) Line Infantry | Strength = 6, QR = Average |
| 5) Line Infantry | Strength = 6, QR = Average |
| 6) Line Infantry | Strength = 6, QR = Average |

Infantry Brigade (French):

7) Line Infantry	Strength = 6, QR = Average
8) Line Infantry	Strength = 6, QR = Average
9) Line Infantry	Strength = 6, QR = Average
10) Line Infantry	Strength = 6, QR = Average
11) Line Infantry	Strength = 6, QR = Average
12) Line Infantry	Strength = 6, QR = Average
13) Line Infantry	Strength = 6, QR = Average

Division Artillery:

14) Foot Artillery	Medium Artillery, Strength = 4, QR = Average
15) Foot Artillery	Light Artillery, Strength = 4, QR = Average

Units: 2nd Infantry Division (Foreign)

Infantry Brigade (Italian):

1) Line Infantry	Strength = 5, QR = Average
2) Line Infantry	Strength = 5, QR = Average
3) Line Infantry	Strength = 5, QR = Average
4) Line Infantry	Strength = 4, QR = Raw
5) Line Infantry	Strength = 4, QR = Raw

Infantry Brigade (Swiss):

6) Line Infantry	Strength = 5, QR = Average
7) Line Infantry	Strength = 5, QR = Raw
8) Line Infantry	Strength = 5, QR = Raw
9) Line Infantry	Strength = 5, QR = Raw

Division Artillery:

10) Foot Artillery	Medium Artillery, Strength = 4, QR = Average
--------------------	--

Units: 3rd Infantry Division (Neapolitan Guard)

Infantry Brigade (Neapolitan):

1) Guard Marines	Strength = 4, QR = Average
2) Guard Grenadiers	Strength = 4, QR = Average
3) Guard Grenadiers	Strength = 4, QR = Average

Infantry Brigade (Neapolitan):

4) Grenadiers	Strength = 5, QR = Average
5) Grenadiers	Strength = 5, QR = Average
6) Grenadiers	Strength = 5, QR = Average

Division Artillery:

7) Foot Artillery	Medium Artillery, Strength = 4, QR = Average
-------------------	--

Units: 4th Infantry Division (Neapolitan)

Infantry Brigade (Neapolitan):

1) Light Infantry	Light, Strength = 5, QR = Average
2) Line Infantry	Strength = 5, QR = Raw
3) Line Infantry	Strength = 5, QR = Raw
4) Line Infantry	Strength = 5, QR = Raw

Infantry Brigade (Neapolitan):

5) Line Infantry	Strength = 5, QR = Raw
6) Line Infantry	Strength = 5, QR = Raw
7) Line Infantry	Strength = 5, QR = Raw

Division Artillery:

8) Foot Artillery	Medium Artillery, Strength = 3, QR = Average
-------------------	--

Units: 5th Infantry Division (Neapolitan)

Infantry Brigade (Neapolitan):

1) Line Infantry	Strength = 5, QR = Raw
2) Line Infantry	Strength = 5, QR = Raw
3) Line Infantry	Strength = 5, QR = Raw
4) Line Infantry	Strength = 5, QR = Raw
5) Line Infantry	Strength = 5, QR = Raw
6) Line Infantry	Strength = 5, QR = Raw

Infantry Brigade (Neapolitan):

7) Light Infantry	Light, Strength = 5, QR = Average
8) Light Infantry	Light, Strength = 5, QR = Average
9) Light Infantry	Light, Strength = 5, QR = Average

Division Artillery:

10) Foot Artillery	Medium Artillery, Strength = 3, QR = Average
--------------------	--

Units: Cavalry Division

Cavalry Brigade:

- | | |
|-------------------------------|---|
| 1) Chasseurs (French) | Light Cavalry, Strength = 4, QR = Average |
| 2) Chasseurs (Neapolitan) | Light Cavalry, Strength = 3, QR = Average |
| 3) Guard Hussars (Neapolitan) | Light Cavalry, Strength = 3, QR = Average |

Units: Reserve Artillery

- | | |
|-------------------|---|
| 1) Foot Artillery | Heavy Artillery, Strength = 4, QR = Average |
| 2) Foot Artillery | Heavy Artillery, Strength = 3, QR = Average |

Duchy of Nassau: 1806

 | DUCHY OF NASSAU | Troops raised by the Duchy of Nassau in 1806

| LT | Hypothetical
DIV

| INF | | CAV |
 | BRG | | BRG |

| LT | | LT |
 | INF | | CAV |

| INF |
BTN

| INF |
BTN

| LT |
ART

Summary:

- 4 Battalions
- 1 Cavalry Regiment
- 1 Artillery Battery

LIGHT DIVISION OF THE DUCHY OF NASSAU: 1806

Units: Light Division

Infantry Brigade:

- | | |
|-------------------|---|
| 1) Light Infantry | Light, Strength = 5, QR = Average |
| 2) Line Infantry | Strength = 8, QR = Average |
| 3) Line Infantry | Strength = 8, QR = Average |
| 4) Line Infantry | Strength = 8, QR = Average |
| 5) Foot Artillery | Light Artillery, Strength = 4, QR = Average |

Cavalry Brigade:

- | | |
|--------------|---|
| 6) Chasseurs | Light Cavalry, Strength = 3, QR = Average |
|--------------|---|

Kingdom of Northern Italy At the outbreak of hostilities in 1809

```

-----
| KINGDOM OF NORTHERN ITALY | Historic
| CORPS I                    |
-----

```

```

-----
| 1ST |                | 2ND |                | CAV |
| DIV |                | DIV |                | DIV |
-----
|     |                |     |                |     | | | | | | | | | | |
|-----|                |-----|                |-----|
| INF | | INF | | DIV | | INF | | INF | | DIV | | CAV | | RES |
| BRG | | BRG | | ART | | BRG | | BRG | | ART | | BRG | | ART |
-----
|     |                |     |                |     | | | | | | | | | | |
|-----|                |-----|                |-----|
| INF | | INF | | MED | | INF | | INF | | MED | | LT | | MED |
| BTN | | BTN | | ART | | BTN | | BTN | | ART | | CAV | | ART |
-----
| INF | | INF | | LT | | INF | | INF | | LT | | LT | | MED |
| BTN | | BTN | | ART | | BTN | | BTN | | ART | | CAV | | ART |
-----
| INF | | INF |                | INF | | INF |                | LT |
| BTN | | BTN |                | BTN | | BTN |                | CAV |
-----
| INF | | INF |                | INF | | INF |                | LT |
| BTN | | BTN |                | BTN | | INF |                | CAV |
-----
| INF |                | INF |                | LT |
| BTN |                | BTN |                | HRS |
-----
| INF |                | INF |                |
| BTN |                | BTN |                |
-----
| INF |                | INF |                |
| BTN |                | BTN |                |
-----
| INF |                | INF |                |
| BTN |                | BTN |                |
-----
| INF |                | INF |                |
| BTN |                | BTN |                |
-----

```

Summary:

- 24 Infantry Battalions
- 4 Cavalry Regiments
- 7 Artillery Batteries

THE KINGDOM OF NORTHERN ITALY: 1809

Units: 1st Infantry Division: Seras

Infantry Brigade: Garreau

- | | |
|------------------|----------------------------|
| 1) Line Infantry | Strength = 5, QR = Average |
| 2) Line Infantry | Strength = 5, QR = Average |
| 3) Line Infantry | Strength = 5, QR = Average |
| 4) Line Infantry | Strength = 5, QR = Average |

Infantry Brigade: Roussel

5) Line Infantry	Strength = 5, QR = Average
6) Line Infantry	Strength = 5, QR = Average
7) Line Infantry	Strength = 5, QR = Average
8) Line Infantry	Strength = 5, QR = Average
9) Line Infantry	Strength = 5, QR = Average
10) Line Infantry	Strength = 5, QR = Average
11) Line Infantry	Strength = 5, QR = Average
12) Line Infantry	Strength = 5, QR = Average

Division Artillery

13) Foot Artillery	Medium Artillery, Strength = 3, QR = Average
14) Foot Artillery	Light Artillery, Strength = 3, QR = Average

Units: 2nd Infantry Division: Broussier

Infantry Brigade: Dessaix

1) Line Infantry	Strength = 5, QR = Average
2) Line Infantry	Strength = 5, QR = Average
3) Line Infantry	Strength = 5, QR = Average
4) Line Infantry	Strength = 5, QR = Average

Infantry Brigade: Dutruy

5) Line Infantry	Strength = 5, QR = Average
6) Line Infantry	Strength = 5, QR = Average
7) Line Infantry	Strength = 5, QR = Average
8) Line Infantry	Strength = 5, QR = Average
9) Line Infantry	Strength = 5, QR = Average
10) Line Infantry	Strength = 5, QR = Average
11) Line Infantry	Strength = 5, QR = Average
12) Line Infantry	Strength = 5, QR = Average

Division Artillery

13) Foot Artillery	Medium Artillery, Strength = 3, QR = Average
14) Foot Artillery	Light Artillery, Strength = 3, QR = Average

Units: Cavalry Division: Sahuc

Cavalry Brigade: Pages

1) Hussars	Light Cavalry, Strength = 3, QR = Average
2) Chasseurs	Light Cavalry, Strength = 3, QR = Average
3) Chasseurs	Light Cavalry, Strength = 3, QR = Average
4) Chasseurs	Light Cavalry, Strength = 3, QR = Average
5) Horse Artillery	Light Artillery, Strength = 3, QR = Average

Units: Corps Reserve Artillery

1) Foot Artillery	Medium Artillery, Strength = 3, QR = Average
2) Foot Artillery	Medium Artillery, Strength = 3, QR = Average

Infantry Brigade: Teste

- | | |
|-------------------|----------------------------|
| 6) Line Infantry | Strength = 5, QR = Average |
| 7) Line Infantry | Strength = 5, QR = Average |
| 8) Line Infantry | Strength = 5, QR = Average |
| 9) Line Infantry | Strength = 5, QR = Average |
| 10) Line Infantry | Strength = 5, QR = Average |
| 11) Line Infantry | Strength = 5, QR = Average |
| 12) Line Infantry | Strength = 5, QR = Average |
| 13) Line Infantry | Strength = 5, QR = Average |

Division Artillery

- | | |
|--------------------|--|
| 14) Foot Artillery | Medium Artillery, Strength = 3, QR = Average |
| 15) Foot Artillery | Light Artillery, Strength = 3, QR = Average |

Units: 2nd Infantry Division: Barbou

Infantry Brigade: Moreau

- | | |
|-------------------|-----------------------------------|
| 1) Light Infantry | Light, Strength = 5, QR = Average |
| 2) Light Infantry | Light, Strength = 5, QR = Average |
| 3) Light Infantry | Light, Strength = 5, QR = Average |
| 4) Light Infantry | Light, Strength = 5, QR = Average |
| 5) Line Infantry | Strength = 5, QR = Average |
| 6) Line Infantry | Strength = 5, QR = Average |
| 7) Line Infantry | Strength = 5, QR = Average |

Infantry Brigade: Roize

- | | |
|-------------------|----------------------------|
| 8) Line Infantry | Strength = 5, QR = Average |
| 9) Line Infantry | Strength = 5, QR = Average |
| 10) Line Infantry | Strength = 5, QR = Average |
| 11) Line Infantry | Strength = 5, QR = Average |
| 12) Line Infantry | Strength = 5, QR = Average |
| 13) Line Infantry | Strength = 5, QR = Average |

Division Artillery

- | | |
|--------------------|--|
| 14) Foot Artillery | Medium Artillery, Strength = 3, QR = Average |
| 15) Foot Artillery | Light Artillery, Strength = 3, QR = Average |

Units: Cavalry Division: Grouchy

Cavalry Brigade: d'Etoquigny

- | | |
|--------------------|---|
| 1) Dragoons | Medium Cavalry, Strength = 3, QR = Average |
| 2) Dragoons | Medium Cavalry, Strength = 3, QR = Average |
| 3) Dragoons | Medium Cavalry, Strength = 3, QR = Average |
| 4) Horse Artillery | Light Artillery, Strength = 3, QR = Average |

Units: Corps Reserve Artillery

- | | |
|-------------------|--|
| 1) Foot Artillery | Medium Artillery, Strength = 3, QR = Average |
| 2) Foot Artillery | Medium Artillery, Strength = 3, QR = Average |

Division Artillery
 12) Foot Artillery Medium Artillery, Strength = 3, QR = Average
 13) Foot Artillery Medium Artillery, Strength = 3, QR = Average

Units: 2nd Infantry Division (Italian): Fontanelli

Infantry Brigade: Julhien
 1) Light Infantry Light, Strength = 5, QR = Average
 2) Light Infantry Light, Strength = 5, QR = Average
 3) Light Infantry Light, Strength = 5, QR = Average
 4) Light Infantry Light, Strength = 5, QR = Average
 5) Line Infantry Strength = 5, QR = Average
 6) Line Infantry Strength = 5, QR = Average
 7) Line Infantry Strength = 5, QR = Average
 8) Line Infantry Strength = 5, QR = Average

Infantry Brigade: Bertoletti
 9) Light Infantry Light, Strength = 5, QR = Average
 10) Line Infantry Strength = 5, QR = Average
 11) Line Infantry Strength = 5, QR = Average
 12) Chasseurs Light cavalry, Strength = 2, QR = Average

Division Artillery
 13) Foot Artillery Medium Artillery, Strength = 3, QR = Average
 14) Foot Artillery Medium Artillery, Strength = 3, QR = Average

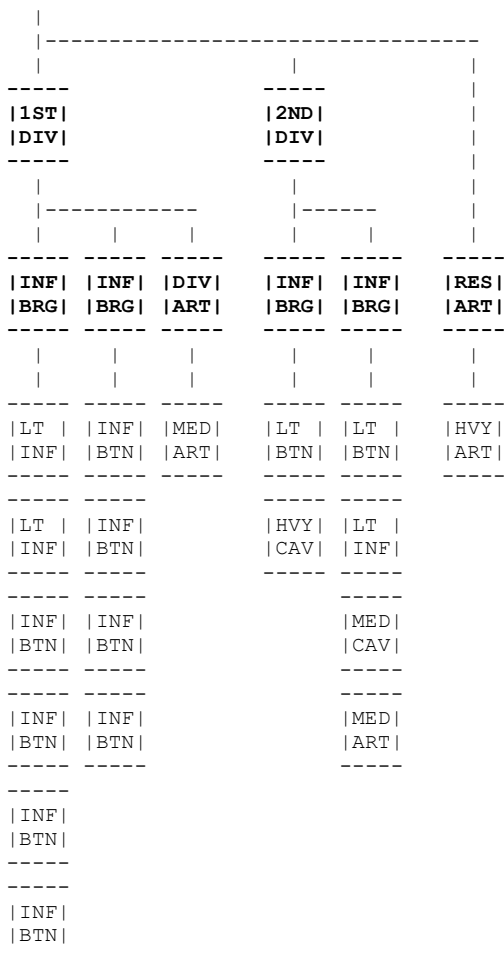
Units: Cavalry Division: Pully

Cavalry Brigade: Poinsot
 1) Dragoons Medium Cavalry, Strength = 3, QR = Average
 2) Dragoons Medium Cavalry, Strength = 3, QR = Average
 3) Dragoons Medium Cavalry, Strength = 3, QR = Average

Units: Corps Reserve Artillery

1) Foot Artillery Medium Artillery, Strength = 3, QR = Average
 2) Foot Artillery Medium Artillery, Strength = 3, QR = Average

 | KINGDOM OF NORTHERN ITALY | Historic
CORPS IV



Summary:

- 13 Infantry Battalions
- 2 Cavalry Regiments
- 3 Artillery Batteries

THE KINGDOM OF NORTHERN ITALY: 1809

Units: 1st Infantry Division (French): Durette

Infantry Brigade:

- 1) Light Infantry Light, Strength = 6, QR = Average
- 2) Light Infantry Light, Strength = 6, QR = Average
- 3) Line Infantry Strength = 6, QR = Average
- 4) Line Infantry Strength = 6, QR = Average
- 5) Line Infantry Strength = 6, QR = Average
- 6) Line Infantry Strength = 6, QR = Average

Infantry Brigade:

- 7) Light Infantry Light, Strength = 6, QR = Average
- 8) Light Infantry Light, Strength = 6, QR = Average
- 9) Line Infantry Strength = 6, QR = Average
- 10) Line Infantry Strength = 6, QR = Average

Division Artillery:

- 11) Foot Artillery Medium Artillery, Strength = 3, QR = Average

Units: Royal Italian Guard Division: Lecchi

Light Brigade: Viani

- 1) Guard Light Infantry Light, Strength = 5, QR = Average
- 2) Guard d'Honor Heavy cavalry, Strength = 2, QR = Veteran

Light Brigade: Lecchi
3) Guard Light Infantry
4) Guard Grenadiers
5) Guard Dragoons
6) Guard Foot Artillery

Light, Strength = 5, QR = Average
Light, Strength = 5, QR = Average
Medium cavalry, Strength = 2, QR = Veteran
Medium Artillery, Strength = 3, QR = Veteran

Units: Corps Reserve Artillery

1) Foot Artillery Heavy Artillery, Strength = 3, QR = Average

The Ottoman Turks

The Ottoman armed forces consisted of three main branches:

- The Kapikulu (infantry)
- The Suvarileri (cavalry)
- The Topiji (artillery)

The Kapikulu (infantry) consisted of:

- The Janissaries
- The Nizam-i-jedid (new order troops)
- Provincial Infantry

The Janissaries consisted of three main groups:

- The Djemaats (stationed in Istanbul)
- The Benluks (stationed in the provinces)
- The Solaks (the Sultan's Guard)

The provincial infantry consisted of:

- The Sekhans
- The Rayas
- The Azaps
- The Derbents
- The Fellahin

The Sekhans were the most numerous. They had some training but were poorly armed usually with bow. The Rayas were mountain troops which were reasonably well trained and equipped. The Azaps were militia, few in number but well trained and equipped on a par with the Janissaries. The Derbents were local defence militia with a little training. The Fellahin were local peasant levies, an untrained and virtually unarmed rabble, often only armed with no more than improvised weapons.

The Suvarileri (cavalry) consisted of:

- The Sipahi
- The Mamelukes
- The Akinjis
- The Yorkus
- The Djellis
- Arab cavalry

The Sipahi were largely feudal cavalry maintained by local provinces. The Mamelukes were well equipped and well trained, probably the best cavalry the Ottomans had. The Akinjis were light cavalry maintained by local provinces. The Yorkus were light cavalry raised mainly in the south; the Djellis were light cavalry raised mainly in the north. Arab cavalry were basically local peasant levy cavalry. They were untrained and virtually unarmed.

The Topiji (artillery) batteries normally consisted of 4x24 pounders plus 6x6 pounders.

However, the 24 pounders were rarely deployed on the battle field but rather set up in fixed defensive positions. The 6 pounders were then used in much the same way as the Europeans used their foot batteries. There were a small number of French mercenary gunners deployed with the Topiji.

Organisation...?

There appears to have been no formal organisation as such. However, it appears that the regular infantry may have been formed up into one division with all others organised into the other divisions and in brigades by province.

The Janissaries and the Nizam-i-jedid loathed each other. They had very different political agendas. It appears that the Janissaries and Nizam-i-jedid were never organised into the same division.

As a result, the organisation shown below is very hypothetical indeed.

 | OTTOMAN TURK | Very Hypothetical

INF					INF					INF						
DIV					DIV					DIV						

INF					INF					INF					RES	
BRG					BRG					BRG					ART	

LT					MED					LT					MED	
INF					CAV					INF					CAV	

LT					LT					LT					MED	
INF					CAV					INF					CAV	

LT					LT					LT					MED	
INF					CAV					INF					CAV	

LT					LT					LT					MED	
INF					CAV					INF					CAV	

LT					LT					LT					MED	
INF					CAV					INF					CAV	

LT					LT					LT					MED	
INF					CAV					INF					CAV	

MED					MED					MED					MED	
ART					ART					ART					ART	

Summary:
 34 Battalions
 14 Cavalry Regiments
 7 Artillery Batteries

HYPOTHETICAL OTTOMAN TURK ODJAK (CORPS)

Units: 1st Beylerbeyis (Division)

- Infantry Orta (Brigade):
 - 1) Derbents Light, Strength = 5, QR = Raw (Can't fire)
 - 2) Fellahin Light, Strength = 5, QR = Raw (Can't fire)
- Infantry Orta (Brigade):
 - 3) Derbents Light, Strength = 5, QR = Raw (Can't fire)
 - 4) Fellahin Light, Strength = 5, QR = Raw (Can't fire)
- Infantry Orta (Brigade):
 - 5) Janissaries Strength = 6, QR = Average
 - 6) Janissaries Strength = 6, QR = Average
 - 7) Janissaries Strength = 6, QR = Average
 - 8) Guard Janissaries Strength = 6, QR = Average
 - 9) Guard Janissaries Strength = 6, QR = Average
 - 10) French Mercenary Foot Artillery Medium Artillery, Strength = 3, QR = Average
- Infantry Orta (Brigade):
 - 11) Sekhans Light, Strength = 5, QR = Raw
 - 12) Sekhans Light, Strength = 5, QR = Raw
 - 13) Sekhans Light, Strength = 5, QR = Raw
 - 14) Azaps Strength = 6, QR = Average

Cavalry Orta (Brigade):
 15) Mamelukes Medium Cavalry, Strength = 4, QR = Average
 16) Arab Cavalry Light Cavalry, Strength = 2, QR = Raw
 17) Arab Cavalry Light Cavalry, Strength = 2, QR = Raw

Cavalry Orta (Brigade):
 18) Djellis Light Cavalry, Strength = 4, QR = Raw
 19) Akinjis Light Cavalry, Strength = 4, QR = Average
 20) Arab Cavalry Light Cavalry, Strength = 2, QR = Raw

Units: 2nd Beylerbeyis (Division)

Infantry Orta (Brigade):
 1) Derbents Light, Strength = 5, QR = Raw (Can't fire)
 2) Fellahin Light, Strength = 5, QR = Raw (Can't fire)
 3) Fellahin Light, Strength = 5, QR = Raw (Can't fire)
 4) Fellahin Light, Strength = 5, QR = Raw (Can't fire)

Infantry Orta (Brigade):
 5) Nizam-i-jedid Strength = 6, QR = Average
 6) Nizam-i-jedid Strength = 6, QR = Average
 7) Nizam-i-jedid Strength = 6, QR = Average
 8) Nizam-i-jedid Strength = 6, QR = Average

(Note: The French mercenary foot artillery unit may be deployed alternately with this Nizam-i-jedid Orta instead of the Janissary Orta.)

Infantry Orta (Brigade):
 9) Sekhans Light, Strength = 5, QR = Raw
 10) Sekhans Light, Strength = 5, QR = Raw
 11) Sekhans Light, Strength = 5, QR = Raw

Cavalry Orta (Brigade):
 12) Suvarileri Light Cavalry, Strength = 4, QR = Average
 13) Sipahi Light Cavalry, Strength = 4, QR = Average

Cavalry Orta (Brigade):
 14) Suvarileri Guard Medium Cavalry, Strength = 4, QR = Average
 15) Sipahi Light Cavalry, Strength = 4, QR = Average

Units: 3rd Beylerbeyis (Division)

Infantry Orta (Brigade):
 1) Derbents Light, Strength = 5, QR = Raw (Can't fire)
 2) Fellahin Light, Strength = 5, QR = Raw (Can't fire)

Infantry Orta (Brigade):
 3) Derbents Light, Strength = 5, QR = Raw (Can't fire)
 4) Fellahin Light, Strength = 5, QR = Raw (Can't fire)

Infantry Orta (Brigade):
 5) Derbents Light, Strength = 5, QR = Raw (Can't fire)
 6) Fellahin Light, Strength = 5, QR = Raw (Can't fire)

Infantry Orta (Brigade):
 7) Sekhans Light, Strength = 6, QR = Raw
 8) Sekhans Light, Strength = 6, QR = Raw
 9) Sekhans Light, Strength = 6, QR = Raw
 10) Rayas Strength = 6, QR = Average

Cavalry Orta (Brigade):
 11) Yorkus Light Cavalry, Strength = 4, QR = Raw
 12) Arab Cavalry Light Cavalry, Strength = 2, QR = Raw
 13) Arab Cavalry Light Cavalry, Strength = 2, QR = Raw
 14) Arab Cavalry Light Cavalry, Strength = 2, QR = Raw

Units: Odjak (Corps) Reserve Artillery

1) Topijis (Foot Artillery) Medium Artillery, Strength = 3, QR = Raw
 2) Topijis (Foot Artillery) Medium Artillery, Strength = 3, QR = Raw
 3) Topijis (Foot Artillery) Medium Artillery, Strength = 3, QR = Raw
 4) Topijis (Foot Artillery) Medium Artillery, Strength = 3, QR = Raw
 5) Topijis (Foot Artillery) Medium Artillery, Strength = 3, QR = Raw
 6) Topijis (Foot Artillery) Medium Artillery, Strength = 3, QR = Raw

Special rules for the Ottoman Turks:

- 1) The Turks hated the Russians. Therefore, raise all Ottoman Turk (but not the French mercenary) unit quality ratings by one if fighting against Russians. For example, a raw Ottoman unit becomes an average Ottoman unit, etc.
- 2) Janissary and Nizam-i-jedid units must never be deployed in the same Beylerbeylis (Division). Further, Janissary and Nizam-i-jedid units must not stop and remain within **12 cm** of each other at **any time**. They may come closer and move past each other, etc, but the units must not be within 12 cm of each other at the end of their movement.
- 3) **Fellahin, Derbent** and **Sekhan** units must remain in **skirmish line formation at all times**. Sekhan units can fire but **Derbents** and **Fellahin** were not equipped with firearms and so **cannot fire**. They can only engage in hand-to-hand combat.
- 4) **Arab cavalry** units **must remain in skirmish line formation at all times**. Further, Arab cavalry units must end their movement within **12 cm** of another Ottoman cavalry unit or Ottoman command unit (any command unit). They may move further away during their movement but must be within 12 cm of another Ottoman cavalry unit or Ottoman command unit at the end of their movement. If they can't do this then they simply run away and are removed from play unless engaged in hand-to-hand combat.
- 5) All Ottoman **cavalry units must take a Break-through charge if able**. They may only opt to manoeuvre if there is no enemy unit to charge.

Units: Cavalry Division:

Cavalry Brigade:

- 1) Chevauleger Light Cavalry, Strength = 4, QR = Average
- 2) Chevauleger Light Cavalry, Strength = 4, QR = Average

Cavalry Brigade:

- 3) Chasseurs a Cheval Light Cavalry, Strength = 4, QR = Average
- 4) Chasseurs a Cheval Light Cavalry, Strength = 4, QR = Average

Cavalry Brigade:

- 5) Dragoons Medium Cavalry, Strength = 4, QR = Average

Units: Reserve Artillery

- 1) Foot Artillery Heavy Artillery, Strength = 3, QR = Average
- 2) Foot Artillery Heavy Artillery, Strength = 3, QR = Average
- 3) Horse Artillery Medium Artillery, Strength = 3, QR = Average

Units: Guard Brigade

- 1) Guard Grenadiers Light, Strength = 7, QR = Average
- 2) Guard Chasseurs Strength = 7, QR = Average
- 3) Guard Horse Artillery Medium Artillery, Strength = 3, QR = Average
- 4) Guard Chevauleger Light Cavalry, Strength = 4, QR = Average