

Medina de Rio: 14 July 1808

Spanish Forces

 | SPANISH ARMY OF CASTILE |
 | AT MEDINA DE RIO | DE LA CUESTA

```

  |-----|
  |       |
  |-----|
  | 1ST   | 2ND   |
  | DIV   | DIV   |
  |-----|
  |       |
  |-----|
  | INF   | INF   | CAV   | RES   |
  | BRG   | BRG   | BRG   | ART   |
  |-----|
  |       |
  |-----|
  | INF   | INF   | LT   | MED   |
  | BTN   | BTN   | CAV   | ART   |
  |-----|
  |       |
  |-----|
  | INF   | INF   | LT   |
  | BTN   | BTN   | CAV   |
  |-----|
  |       |
  |-----|
  | INF   | INF   | LT   |
  | BTN   | BTN   | CAV   |
  |-----|
  |       |
  |-----|
  | INF   | INF   |
  | BTN   | BTN   |
  |-----|
  
```

Summary:

- 8 Infantry Battalions
- 3 Cavalry Regiments
- 1 Artillery Battery

SPANISH ARMY OF CASTILE at Medina de Rio under De La Cuesta

Units: 1st Infantry Division:

Infantry Brigade (Spanish):

- | | | |
|------------------|--------|----------------------------|
| 1) Line Infantry | Cov/1 | Strength = 8, QR = Average |
| 2) Line Infantry | Cov/2 | Strength = 8, QR = Average |
| 3) Militia | Leon/1 | Strength = 8, QR = Raw |
| 4) Militia | Leon/2 | Strength = 8, QR = Raw |

Units: 2nd Infantry Division:

Infantry Brigade (Spanish):

- | | | |
|------------|--------|------------------------|
| 5) Militia | Leon/3 | Strength = 8, QR = Raw |
| 6) Militia | Torm/1 | Strength = 8, QR = Raw |
| 7) Militia | Bena/2 | Strength = 8, QR = Raw |
| 8) Militia | Vall/1 | Strength = 8, QR = Raw |

Cavalry Brigade (Spanish):

- | | | |
|-------------------|-----|---------------------------------------|
| 9) Guard Cavalry | SGC | Light Cavalry, Strength = 2, QR = Raw |
| 10) Carabineros | SC | Light Cavalry, Strength = 2, QR = Raw |
| 11) Light Cavalry | SLC | Light Cavalry, Strength = 2, QR = Raw |

Units: Reserve Artillery:

- | | |
|----------------------------|--|
| 12) Spanish Foot Artillery | Medium Artillery, Strength = 4, QR = Average |
|----------------------------|--|

 | SPANISH ARMY OF GALICIA |
 | AT MEDINA DE RIO | BLAKE

```

  |
  |-----
  |
  |
  |-----
  | INF | | INF | | INF |
  | DIV | | DIV | | DIV |
  |-----
  |
  |
  |-----
  | INF | | INF | | INF |
  | BRG | | BRG | | BRG |
  |-----
  |
  |
  |-----
  | INF | | INF | | INF |
  | BTN | | BTN | | BTN |
  |-----
  |
  |
  |-----
  | INF | | INF | | INF |
  | BTN | | BTN | | BTN |
  |-----
  |
  |
  |-----
  | LT | | INF | | INF |
  | INF | | BTN | | BTN |
  |-----
  |
  |
  |-----
  | INF | | INF | | INF |
  | BTN | | BTN | | BTN |
  |-----
  |
  |
  |-----
  | LT | | INF | | INF |
  | INF | | BTN | | BTN |
  |-----
  |
  |
  |-----
  | INF | | INF | | INF |
  | BTN | | BTN | | BTN |
  |-----
  |
  |
  |-----
  | LT | | INF | | INF |
  | CAV | | BTN | | BTN |
  |-----
  |
  |
  |-----
  | LT | | INF | | INF |
  | CAV | | BTN | | BTN |
  |-----
  |
  |
  |-----
  | MED | | INF | | MED |
  | ART | | BTN | | ART |
  |-----
  |
  |
  |-----
  | INF |
  | BTN |
  |-----
  |
  |
  |-----
  | INF |
  | BTN |
  |-----
  |
  |
  |-----
  | INF |
  | BTN |
  |-----
  |
  |
  |-----
  | MED |
  | ART |
  |-----
  
```

Summary:
 27 Infantry Battalions
 2 Cavalry Regiments
 3 Artillery Batteries

SPANISH ARMY OF GALICIA at Medina de Rio under Blake**Units: 1st Infantry Division: Maceda**

Infantry Brigade (Spanish):

1) Converged Grenadiers	CG/1	Strength = 7, QR = Average
2) Converged Grenadiers	CG/2	Strength = 7, QR = Average
3) Light Infantry	Nav/1	Light, Strength = 7, QR = Raw
4) Line Infantry	Zara/1	Strength = 7, QR = Raw
5) Light Infantry	Gero/1	Light, Strength = 4, QR = Raw
6) Militia	Cata/1	Strength = 4, QR = Raw
7) Dragoons	Rein	Light Cavalry, Strength = 2, QR = Raw
8) Light Cavalry	Mont	Light Cavalry, Strength = 2, QR = Raw
9) Foot Artillery		Medium Artillery, Strength = 3, QR = Average

Units: 2nd Infantry Division: Jado-Cagigal

Infantry Brigade (Spanish):

1) Grenadiers	Gal/1	Strength = 7, QR = Average
2) Grenadiers	Gal/2	Strength = 7, QR = Average
3) Line Infantry	Del/1	Strength = 7, QR = Raw
4) Line Infantry	Del/2	Strength = 7, QR = Raw
5) Line Infantry	Mall/1	Strength = 7, QR = Raw
6) Line Infantry	Hib/1	Strength = 7, QR = Raw
7) Line Infantry	Hib/2	Strength = 7, QR = Raw
8) Militia	Buen/1	Strength = 4, QR = Raw
9) Militia	Barb/1	Strength = 4, QR = Raw
10) Militia	Sala/1	Strength = 4, QR = Raw
11) Militia	Mond/1	Strength = 4, QR = Raw
12) Militia	Tuy/1	Strength = 4, QR = Raw
13) Foot Artillery		Medium Artillery, Strength = 3, QR = Average

Units: 3rd Infantry Division: Portago

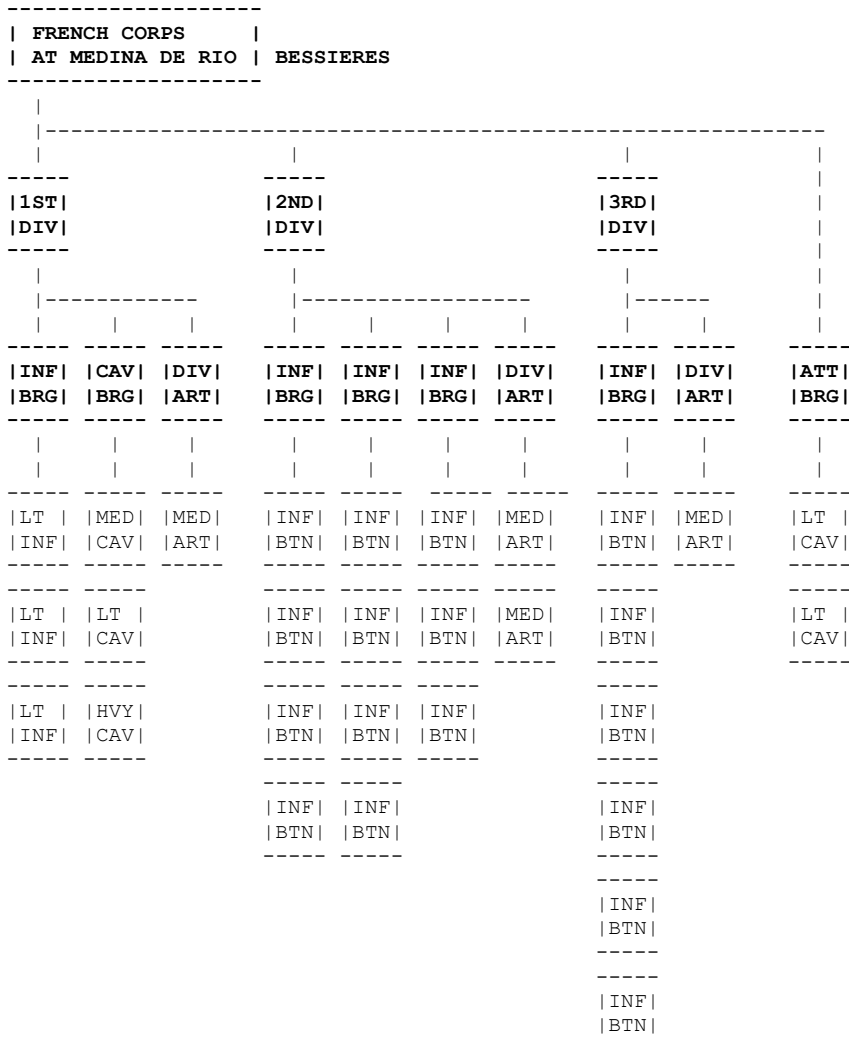
Infantry Brigade (Spanish):

1) Converged Grenadiers	CG/3	Strength = 8, QR = Average
2) Converged Grenadiers	CG/4	Strength = 8, QR = Average
3) Line Infantry	Prin/1	Strength = 8, QR = Raw
4) Line Infantry	Prin/2	Strength = 8, QR = Raw
5) Line Infantry	Tol/1	Strength = 8, QR = Raw
6) Line Infantry	Tol/2	Strength = 8, QR = Raw
7) Line Infantry	Ara/1	Strength = 8, QR = Raw
6) Militia	Sant/1	Strength = 4, QR = Raw
6) Militia	Lugo/1	Strength = 4, QR = Raw
9) Foot Artillery		Medium Artillery, Strength = 3, QR = Average

Units: Reserve Artillery:

12) Spanish Horse Artillery		Medium Artillery, Strength = 3, QR = Average
-----------------------------	--	--

Medina de Rio: 14 July 1808 French Forces



Summary:
 20 Infantry Battalions
 5 Cavalry Regiments
 4 Artillery Batteries

FRENCH CORPS at Medina de Rio under Bessieres

Units: Guard Division: Friant

- Infantry Brigade:
 1) Guard Infantry 1/1 Light, Strength = 7, QR = Veteran
 2) Guard Infantry 2/1 Light, Strength = 7, QR = Veteran
 3) Guard Infantry 3/1 Light, Strength = 7, QR = Veteran
- Cavalry Brigade:
 4) Guard Dragoons 1st Medium Cavalry, Strength = 2, QR = Veteran
 5) Polish Light Horse 2nd Light Cavalry, Strength = 2, QR = Veteran
 6) Gendarme d'Elite 1st Heavy Cavalry, Strength = 2, QR = Veteran
- Division Artillery:
 7) Guard Foot Artillery Medium Artillery, Strength = 4, QR = Veteran

Units: Infantry Division: Merle

Infantry Brigade: Sabathier

1) Line Infantry	120/1	Strength = 7, QR = Average
2) Line Infantry	120/2	Strength = 7, QR = Average
3) Line Infantry	18/1	Strength = 7, QR = Average
4) Line Infantry	18/2	Strength = 7, QR = Average

Infantry Brigade: D'Armagnac

5) Line Infantry	47/1	Strength = 7, QR = Average
6) Line Infantry	14/1	Strength = 7, QR = Average
7) Line Infantry	86/1	Strength = 3, QR = Average
8) Swiss Line Infantry	3 rd	Strength = 4, QR = Raw

Infantry Brigade: Ducos

9) Line Infantry	119/1	Strength = 7, QR = Average
10) Line Infantry	119/2	Strength = 7, QR = Average
11) Line Infantry	119/3	Strength = 7, QR = Average

Division Artillery:

12) Foot Artillery	Medium Artillery, Strength = 4, QR = Average
13) Foot Artillery	Medium Artillery, Strength = 4, QR = Average

Units: Infantry Division: Mouton

Infantry Brigade: Reynaud

1) Line Infantry	15/1	Strength = 7, QR = Average
2) Line Infantry	15/2	Strength = 7, QR = Average
3) Line Infantry	15/3	Strength = 7, QR = Average
4) Light Infantry	4/1	Light, Strength = 7, QR = Average
5) Light Infantry	4/1	Light, Strength = 7, QR = Average
6) Light Infantry	4/1	Light, Strength = 7, QR = Average

Division Artillery:

7) Foot Artillery	Medium Artillery, Strength = 4, QR = Average
-------------------	--

Units: Attached Cavalry Brigade: Lasalle

Cavalry Brigade:

1) Chasseurs a Cheval	10 th	Light Cavalry, Strength = 5, QR = Average
2) Chasseurs a Cheval	22 nd	Light Cavalry, Strength = 5, QR = Average