

Eckmuhl: 22 April 1809

The Austrian Army commanded by Archduke Charles

```

-----
| AUSTRIAN I CORPS |
| AT ECKMUHL      | BELLEGARDE
-----

|
|-----|
| 1ST |      | 2ND |      | LT |
| DIV |      | DIV |      | DIV |
|-----|      |-----|      |-----|
|
|-----|      |-----|      |-----| | |
| INF | INF | DIV | INF | LT | LT | RES |
| BRG | BRG | ART | BRG | BRG | BRG | ART |
|-----|      |-----|      |-----|
|
|-----|      |-----|      |-----| | |
| INF | INF | MED | INF | LT | LT | HVY |
| BTN | BTN | ART | BTN | INF | INF | ART |
|-----|      |-----|      |-----|
|
|-----|      |-----|      |-----| | |
| INF | INF |     | INF | LT | LT | HVY |
| BTN | BTN |     | BTN | INF | INF | ART |
|-----|      |-----|      |-----|
|
|-----|      |-----|      |-----| | |
| INF | INF |     | INF | LT | LT | MED |
| BTN | BTN |     | BTN | INF | INF | ART |
|-----|      |-----|      |-----|
|
|-----|      |-----|      |-----| |
| INF | INF |     | INF | LT | LT |
| BTN | BTN |     | BTN | CAV | CAV |
|-----|      |-----|      |-----|
|
|-----|      |-----|      |-----| |
| INF | INF |     | INF | LT | MED |
| BTN | BTN |     | BTN | ART | HRS |
|-----|      |-----|      |-----|
|
|-----|      |-----|      |-----|
| INF | INF |     | INF |
| BTN | BTN |     | BTN |
|-----|      |-----|      |-----|
|
|-----|      |-----|      |-----|
| MED | MED |     | INF |
| ART | ART |     | BTN |
|-----|      |-----|      |-----|
|
|-----|      |-----|      |-----|
| INF |
| BTN |
|-----|      |-----|      |-----|
|
|-----|      |-----|      |-----|
| INF |
| BTN |
|-----|      |-----|      |-----|
|
|-----|      |-----|      |-----|
| MED |
| ART |
|-----|

```

Summary:
 27 Infantry Battalions
 2 Cavalry Regiments
 9 Artillery Batteries

AUSTRIAN I CORPS at Eckmuhl under Bellegarde**Units: 1st Infantry Division: Vogelsang**

Infantry Brigade: Henneberg

1) Line Infantry	35/1	Strength = 9, QR = Average
2) Line Infantry	35/2	Strength = 9, QR = Average
3) Line Infantry	35/3	Strength = 9, QR = Average
4) Line Infantry	42/1	Strength = 9, QR = Average
5) Line Infantry	42/2	Strength = 9, QR = Average
6) Line Infantry	42/3	Strength = 9, QR = Average
7) Foot Artillery		Medium Artillery, Strength = 4, QR = Average

Infantry Brigade: Freih

8) Line Infantry	17/1	Strength = 9, QR = Average
9) Line Infantry	17/2	Strength = 9, QR = Average
10) Line Infantry	17/3	Strength = 9, QR = Average
11) Line Infantry	36/1	Strength = 9, QR = Average
12) Line Infantry	36/2	Strength = 9, QR = Average
13) Line Infantry	36/3	Strength = 9, QR = Average
14) Foot Artillery		Medium Artillery, Strength = 4, QR = Average

Division Artillery:

15) Foot Artillery		Medium Artillery, Strength = 3, QR = Average
--------------------	--	----------------------------------------------

Units: 2nd Infantry Division: Ulm

Infantry Brigade: Wacqhant

1) Line Infantry	10/1	Strength = 9, QR = Average
2) Line Infantry	10/2	Strength = 9, QR = Average
3) Line Infantry	10/3	Strength = 9, QR = Average
4) Line Infantry	11/1	Strength = 9, QR = Average
5) Line Infantry	11/2	Strength = 9, QR = Average
6) Line Infantry	11/3	Strength = 9, QR = Average
7) Line Infantry	47/1	Strength = 9, QR = Average
8) Line Infantry	47/2	Strength = 9, QR = Average
9) Line Infantry	47/3	Strength = 9, QR = Average
10) Foot Artillery		Medium Artillery, Strength = 4, QR = Average

Units: Light Division: Fresnel

Light Brigade: Nostitz

1) Jager	M/1	Light, Strength = 8, QR = Veteran
2) Jager	2 nd	Light, Strength = 8, QR = Veteran
3) Jager	4 th	Light, Strength = 8, QR = Veteran
4) Uhlan	2 nd	Light Cavalry, Lance armed, Strength = 10, QR = Average
5) Foot Artillery		Light Artillery, Strength = 4, QR = Average

Light Brigade: Wintzingerode

6) Jager	M/2	Light, Strength = 8, QR = Veteran
7) Jager	1 st	Light, Strength = 8, QR = Veteran
8) Jager	3 rd	Light, Strength = 8, QR = Veteran
9) Hussars	6 th	Light Cavalry, Strength = 10, QR = Average
10) Horse Artillery		Medium Artillery, Strength = 3, QR = Average

Units: Corps Reserve Artillery

1) Foot Artillery		Heavy Artillery, Strength = 3, QR = Average
2) Foot Artillery		Heavy Artillery, Strength = 3, QR = Average
3) Foot Artillery		Medium Artillery, Strength = 3, QR = Average

Infantry Brigade: Greifenbach

4) Line Infantry	25/1	Strength = 9, QR = Average
5) Line Infantry	25/2	Strength = 9, QR = Average
6) Line Infantry	25/3	Strength = 9, QR = Average
7) Line Infantry	54/1	Strength = 9, QR = Average
8) Line Infantry	54/2	Strength = 9, QR = Average
9) Line Infantry	54/3	Strength = 9, QR = Average
10) Foot Artillery		Medium Artillery, Strength = 4, QR = Average

Division Artillery:

11) Foot Artillery		Medium Artillery, Strength = 3, QR = Average
--------------------	--	----------------------------------------------

Units: 2nd Division: Treunenfels

Infantry Brigade: Weid-Runkel

1) Line Infantry	18/1	Strength = 9, QR = Average
2) Line Infantry	18/2	Strength = 9, QR = Average
3) Line Infantry	18/3	Strength = 9, QR = Average
4) Line Infantry	21/1	Strength = 9, QR = Average
5) Line Infantry	21/2	Strength = 9, QR = Average
6) Line Infantry	21/3	Strength = 9, QR = Average
7) Line Infantry	28/1	Strength = 9, QR = Average
8) Line Infantry	28/2	Strength = 9, QR = Average
9) Line Infantry	28/3	Strength = 9, QR = Average
10) Foot Artillery		Medium Artillery, Strength = 4, QR = Average

Division Artillery:

11) Foot Artillery		Medium Artillery, Strength = 3, QR = Average
--------------------	--	----------------------------------------------

Units: Light Division: Klenau

Light Brigade: Vecsey

1) Line Infantry	2 nd EK	Strength = 9, QR = Average
2) Jager	7 th	Light, Strength = 8 QR = Veteran
3) Jager	8 th	Light, Strength = 8, QR = Veteran
4) Chevauleger	5 th	Light Cavalry, Strength = 10, QR = Average
5) Foot Artillery		Light Artillery, Strength = 4, QR = Average

Light Brigade: Grenneville

6) Line Infantry	4 th EK	Strength = 9, QR = Average
7) Jager	5 th	Light, Strength = 8, QR = Veteran
8) Jager	6 th	Light, Strength = 8, QR = Veteran
9) Uhlan	1 st	Light Cavalry, Lance armed, Strength = 10, QR = Average
10) Horse Artillery		Medium Artillery, Strength = 3, QR = Average

Units: Corps Reserve Artillery

1) Foot Artillery		Heavy Artillery, Strength = 3, QR = Average
2) Foot Artillery		Heavy Artillery, Strength = 3, QR = Average
3) Horse Artillery		Medium Artillery, Strength = 3, QR = Average

```

-----
| AUSTRIAN III CORPS |
| AT ECKMUHL         | FRANZ
-----

```

```

|
|-----
|-----
|1ST|           |2ND|           |LT |           |
|DIV|           |DIV|           |DIV|           |
|-----
|-----
|-----
|INF| |INF| |DIV| |INF| |INF| |DIV| |LT | |DIV| |RES|
|BRG| |BRG| |ART| |BRG| |BRG| |ART| |BRG| |ART| |ART|
|-----
|           |           |           |           |           | | | | | | | | | | | | |
|---|---|---|---|---|---|---|---|---|---|---|---|---|---|---|---|---|
|INF| |INF| |MED| |INF| |INF| |INF| |INF| |LT | |HVY|
|BTN| |BTN| |ART| |BTN| |BTN| |BTN| |BTN| |INF| |ART|
|-----
|INF| |INF| |INF| |INF| |INF| |INF| |LT | |HVY|
|BTN| |BTN| |BTN| |BTN| |BTN| |BTN| |CAV| |ART|
|-----
|INF| |INF| |INF| |MED| |LT | |LT | |HVY|
|BTN| |BTN| |BTN| |ART| |CAV| |ART| |ART|
|-----
|INF| |INF| |INF| |INF| |LT | |MED|
|BTN| |BTN| |BTN| |BTN| |ART| |ART|
|-----
|INF| |INF| |INF| |INF| |LT |
|BTN| |BTN| |BTN| |BTN| |ART| |ART|
|-----
|INF| |INF| |INF| |INF|
|BTN| |BTN| |BTN| |BTN|
|-----
|INF| |INF| |INF| |INF|
|BTN| |BTN| |BTN| |BTN|
|-----
|MED| |MED| |MED| |MED|
|ART| |ART| |ART| |ART|
-----

```

Summary:

22 Infantry Battalions
 1 Cavalry Regiment
 9 Artillery Batteries

AUSTRIAN III CORPS at Eckmuhl under Franz

Units: 1st Division: Lusignan

Infantry Brigade: Kayser

1) Line Infantry	56/1	Strength = 9, QR = Average
2) Line Infantry	56/2	Strength = 9, QR = Average
3) Line Infantry	56/3	Strength = 9, QR = Average
4) Line Infantry	7/1	Strength = 9, QR = Average
5) Line Infantry	7/2	Strength = 9, QR = Average
6) Line Infantry	7/2	Strength = 9, QR = Average
7) Foot Artillery		Medium Artillery, Strength = 4, QR = Average

Infantry Brigade: Thierry

8) Line Infantry	1/1	Strength = 9, QR = Average
9) Line Infantry	1/2	Strength = 9, QR = Average
10) Line Infantry	1/3	Strength = 9, QR = Average
11) Line Infantry	29/1	Strength = 9, QR = Average
12) Line Infantry	29/2	Strength = 9, QR = Average
13) Line Infantry	29/3	Strength = 9, QR = Average
14) Foot Artillery		Medium Artillery, Strength = 4, QR = Average

Division Artillery:
15) Foot Artillery Medium Artillery, Strength = 3, QR = Average

Units: 2nd Division: St Julien

Infantry Brigade: Alois
 1) Line Infantry 12/1 Strength = 9, QR = Average
 2) Line Infantry 12/2 Strength = 9, QR = Average
 3) Line Infantry 12/3 Strength = 9, QR = Average
 4) Line Infantry 23/1 Strength = 9, QR = Average
 5) Line Infantry 23/2 Strength = 9, QR = Average
 6) Line Infantry 23/3 Strength = 9, QR = Average
 7) Foot Artillery Medium Artillery, Strength = 4, QR = Average

Infantry Brigade: Bieber
 8) Line Infantry 20/1 Strength = 9, QR = Average
 9) Line Infantry 20/2 Strength = 9, QR = Average
 10) Line Infantry 20/3 Strength = 9, QR = Average
 11) Line Infantry 38/1 Strength = 9, QR = Average
 12) Line Infantry 38/2 Strength = 9, QR = Average
 13) Line Infantry 38/3 Strength = 9, QR = Average
 14) Foot Artillery Medium Artillery, Strength = 4, QR = Average

Division Artillery:
15) Foot Artillery Medium Artillery, Strength = 3, QR = Average

Units: Light Division: Vukassovich

Light Brigade: Moritz
 1) Erz Karl Legion 1/ EK Strength = 9, QR = Average
 2) Erz Karl Legion 2/ EK Strength = 9, QR = Average
 3) Hussars 3rd Light Cavalry, Strength = 5, QR = Average
 4) Foot Artillery Light Artillery, Strength = 4, QR = Average

Light Brigade: Pfanzer
 5) Grenze 9th Light, Strength = 9, QR = Veteran
 6) Hussars 4th Light Cavalry, Lance armed, Strength = 5, QR = Veteran
 7) Foot Artillery Light Artillery, Strength = 4, QR = Average

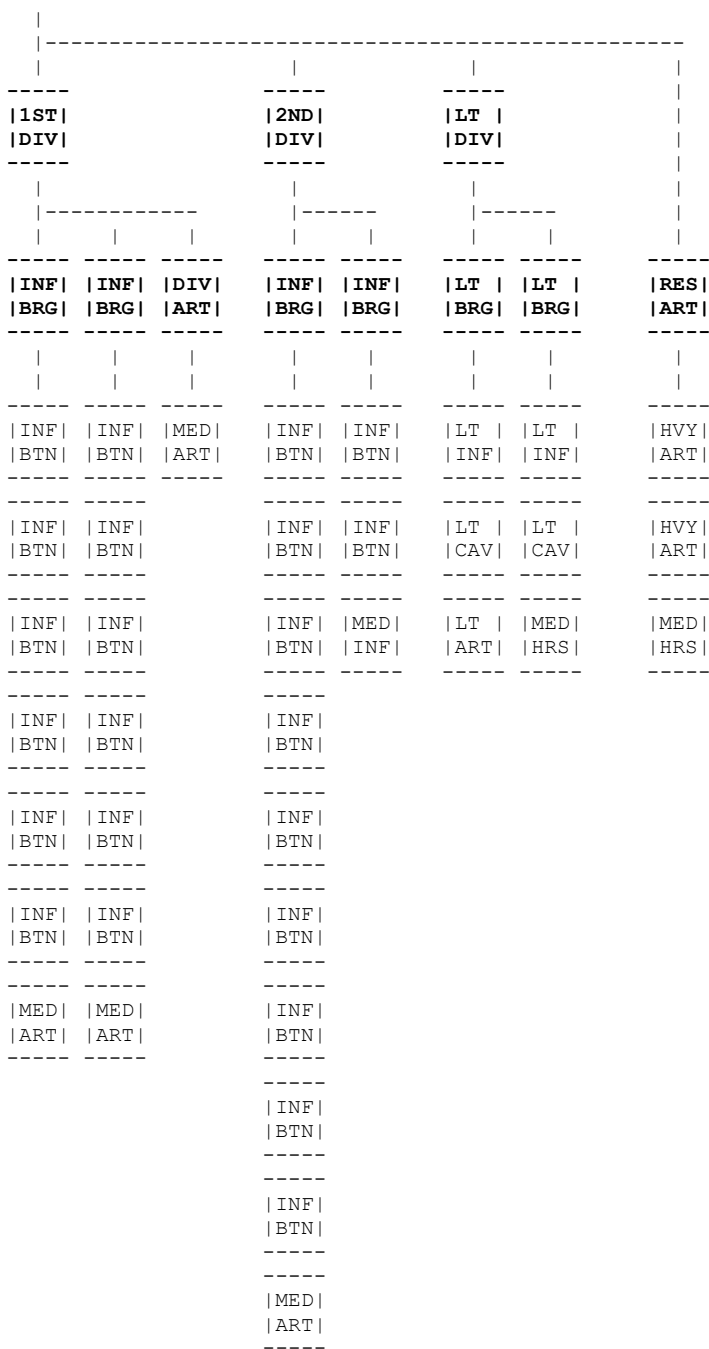
Division Artillery:
8) Horse Artillery Medium Artillery, Strength = 3, QR = Average

Units: Corps Reserve Artillery

1) Foot Artillery Heavy Artillery, Strength = 3, QR = Average
 2) Foot Artillery Heavy Artillery, Strength = 3, QR = Average
 3) Foot Artillery Heavy Artillery, Strength = 3, QR = Average
 4) Foot Artillery Medium Artillery, Strength = 3, QR = Average

```

-----
| AUSTRIAN IV CORPS |
| AT ECKMUHL       | ROSENBERG
-----
  
```



Summary:
 25 Infantry Battalions
 2 Cavalry Regiments
 10 Artillery Batteries

AUSTRIAN IV CORPS at ECKMUHL under Rosenberg

Units: 1st Division: Dedovich

- Infantry Brigade: Grill
- 1) Line Infantry 8/1 Strength = 5, QR = Average
 - 2) Line Infantry 8/2 Strength = 5, QR = Average
 - 3) Line Infantry 8/3 Strength = 5, QR = Average
 - 4) Line Infantry 22/1 Strength = 5, QR = Average
 - 5) Line Infantry 22/2 Strength = 5, QR = Average
 - 6) Line Infantry 22/2 Strength = 5, QR = Average
 - 7) Foot Artillery Medium Artillery, Strength = 4, QR = Average

Infantry Brigade: Neustadter

8) Line Infantry	9/1	Strength = 5, QR = Average
9) Line Infantry	9/2	Strength = 5, QR = Average
10) Line Infantry	9/3	Strength = 5, QR = Average
11) Line Infantry	55/1	Strength = 5, QR = Average
12) Line Infantry	55/2	Strength = 5, QR = Average
13) Line Infantry	55/3	Strength = 5, QR = Average
14) Foot Artillery		Medium Artillery, Strength = 4, QR = Average

Division Artillery:

15) Foot Artillery		Medium Artillery, Strength = 3, QR = Average
--------------------	--	----------------------------------------------

Units: 2nd Division: Hohenlohe

Infantry Brigade: Riese

1) Line Infantry	40/1	Strength = 5, QR = Average
2) Line Infantry	40/2	Strength = 5, QR = Average
3) Line Infantry	40/3	Strength = 5, QR = Average
4) Line Infantry	44/1	Strength = 5, QR = Average
5) Line Infantry	44/2	Strength = 5, QR = Average
6) Line Infantry	44/3	Strength = 5, QR = Average
7) Line Infantry	46/1	Strength = 5, QR = Average
8) Line Infantry	46/2	Strength = 5, QR = Average
9) Line Infantry	46/3	Strength = 5, QR = Average
10) Foot Artillery		Medium Artillery, Strength = 4, QR = Average

Infantry Brigade: Waldegg

11) Erz Karl Legion	5 th	Strength = 5, QR = Average
12) Erz Karl Legion	6 th	Strength = 5, QR = Average
13) Foot Artillery		Medium Artillery, Strength = 4, QR = Average

Units: 3rd Division: Somariva

Light Brigade: Stutterheim

1) Grenze	12 th	Light, Strength = 5, QR = Average
2) Chevauleger	4 th	Light Cavalry, Strength = 10, QR = Average
3) Foot Artillery		Light Artillery, Strength = 4, QR = Average

Light Brigade: Radivojevich

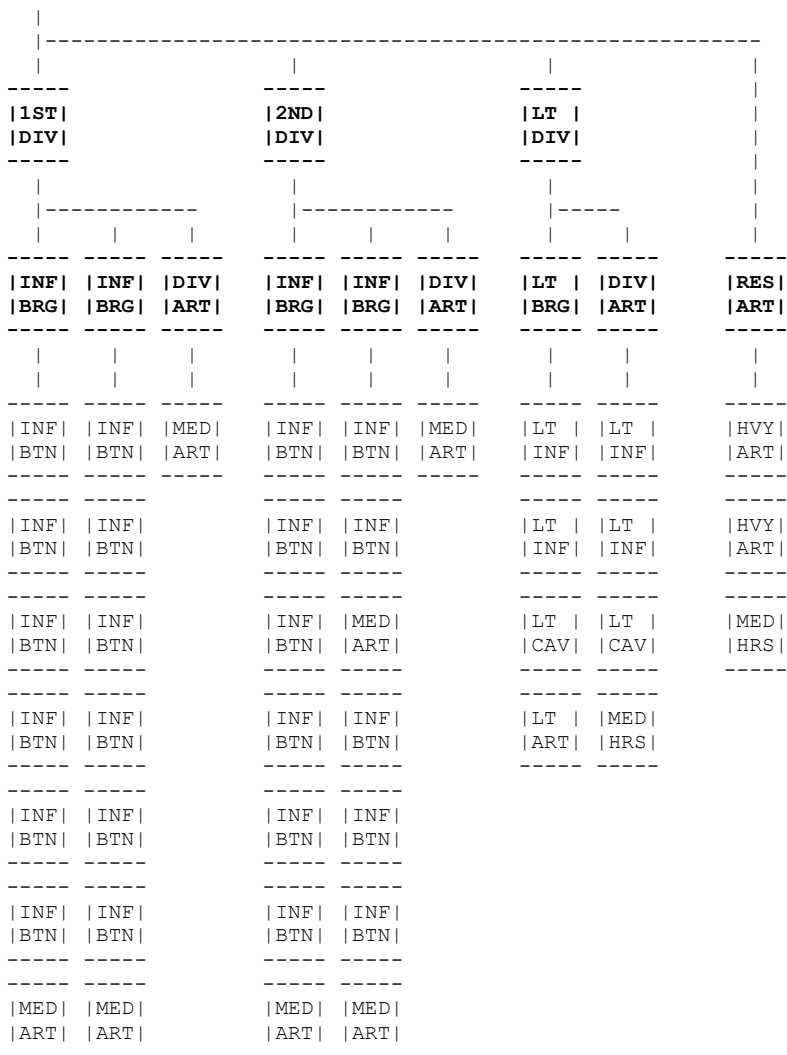
4) Grenze	13 th	Light, Strength = 5, QR = Average
5) Hussars	10 th	Light Cavalry, Strength = 10, QR = Veteran
6) Horse Artillery		Medium Artillery, Strength = 3, QR = Average

Units: Corps Reserve Artillery

1) Foot Artillery		Heavy Artillery, Strength = 3, QR = Average
2) Foot Artillery		Heavy Artillery, Strength = 3, QR = Average
3) Horse Artillery		Medium Artillery, Strength = 3, QR = Average


```

-----
| AUSTRIAN V CORPS |
| AT ECKMUHL       | LUDWIG
-----
    
```



Summary:

- 26 Infantry Battalions
- 2 Cavalry Regiments
- 10 Artillery Batteries

AUSTRIAN V CORPS at Eckmuhl under Ludwig

Units: 1st Division: Lindenau

Infantry Brigade: Mayer

- 1) Line Infantry 3/1 Strength = 9, QR = Average
- 2) Line Infantry 3/2 Strength = 9, QR = Average
- 3) Line Infantry 3/3 Strength = 9, QR = Average
- 4) Line Infantry 50/1 Strength = 9, QR = Average
- 6) Line Infantry 50/3 Strength = 9, QR = Average
- 7) Foot Artillery Medium Artillery, Strength = 4, QR = Average

Infantry Brigade: Berenburg

- 8) Line Infantry 2/1 Strength = 9, QR = Average
- 9) Line Infantry 2/2 Strength = 9, QR = Average
- 10) Line Infantry 2/3 Strength = 9, QR = Average
- 11) Line Infantry 33/1 Strength = 9, QR = Average
- 12) Line Infantry 33/2 Strength = 9, QR = Average
- 13) Line Infantry 33/3 Strength = 9, QR = Average
- 14) Foot Artillery Medium Artillery, Strength = 4, QR = Average

Division Artillery:

- 15) Foot Artillery Medium Artillery, Strength = 3, QR = Average

Units: 2nd Division: Reuss-Plauen

Infantry Brigade: Bianchi

1) Line Infantry	39/1	Strength = 9, QR = Average
2) Line Infantry	39/2	Strength = 9, QR = Average
3) Line Infantry	39/3	Strength = 9, QR = Average
4) Line Infantry	60/1	Strength = 9, QR = Average
5) Line Infantry	60/2	Strength = 9, QR = Average
6) Line Infantry	60/3	Strength = 9, QR = Average
7) Foot Artillery		Medium Artillery, Strength = 4, QR = Average

Infantry Brigade: Rothacker

8) Line Infantry	58/1	Strength = 9, QR = Average
9) Line Infantry	58/2	Strength = 9, QR = Average
10) Line Infantry	58/3	Strength = 9, QR = Average
11) Vienna Freicorps	1 st	Strength = 9, QR = Average
12) Vienna Freicorps	2 nd	Strength = 9, QR = Average
13) Vienna Freicorps	3 rd	Strength = 9, QR = Average
14) Foot Artillery		Medium Artillery, Strength = 4, QR = Average

Division Artillery:

15) Foot Artillery		Medium Artillery, Strength = 3, QR = Average
--------------------	--	----------------------------------------------

Units: Light Division: Schustekh

Light Brigade: Freih

1) Grenze	7/1	Light, Strength = 9, QR = Average
2) Grenze	7/2	Light, Strength = 9, QR = Average
3) Hussars	8 th	Light Cavalry, Strength = 10, QR = Veteran
4) Foot Artillery		Light Artillery, Strength = 4, QR = Average

Light Brigade: Radetzky

5) Grenze	8/1	Light, Strength = 9, QR = Average
6) Grenze	8/2	Light, Strength = 9, QR = Average
7) Uhlán	3 rd	Light Cavalry, Lance armed, Strength = 10, QR = Average
8) Horse Artillery		Medium Artillery, Strength = 3, QR = Average

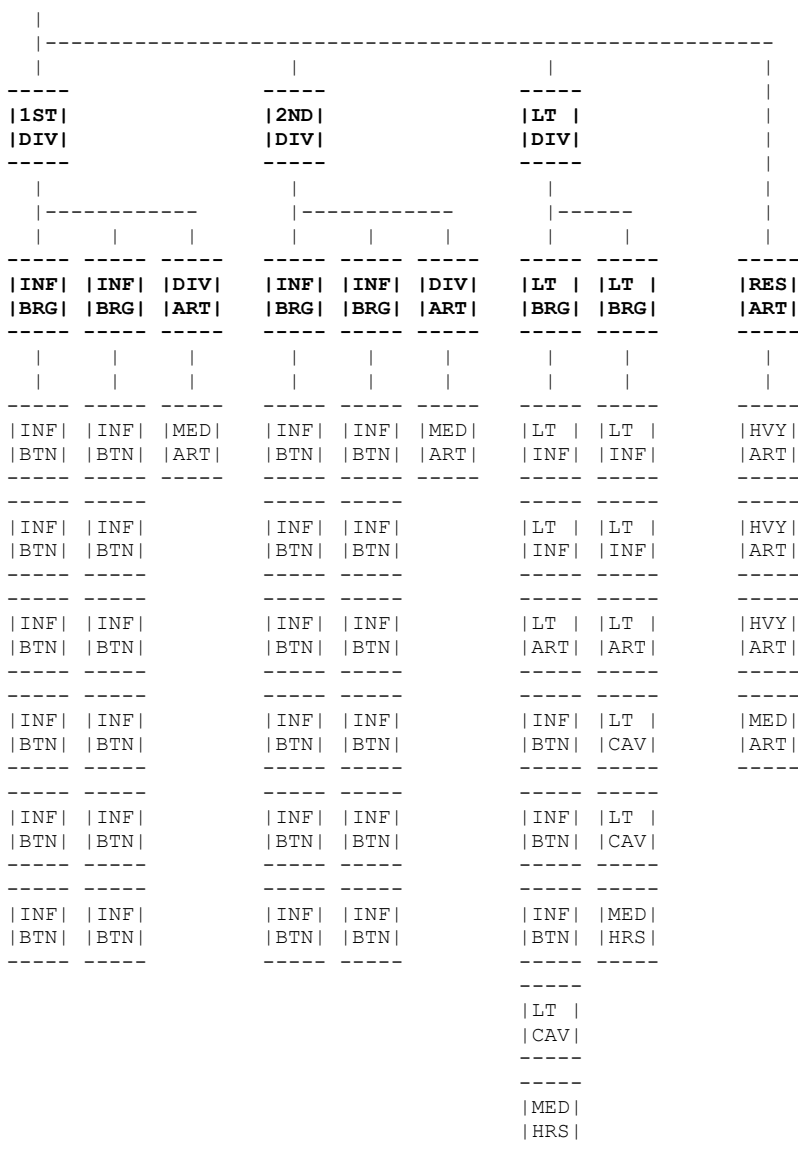
Units: Corps Reserve Artillery

1) Foot Artillery		Heavy Artillery, Strength = 3, QR = Average
2) Foot Artillery		Heavy Artillery, Strength = 3, QR = Average
3) Horse Artillery		Medium Artillery, Strength = 3, QR = Average

```

-----
| AUSTRIAN VI CORPS |
| AT ECKMUHL       | HILLER
-----

```



Summary:

- 31 Infantry Battalions
- 3 Cavalry Regiments
- 14 Artillery Batteries

AUSTRIAN 6TH CORPS at Ekmuhl under Hiller

Units: 1st Infantry Division: Kottulinsky

Infantry Brigade: Hohenfeld

- | | | |
|-------------------|------|----------------------------------------------|
| 1) Line Infantry | 14/1 | Strength = 9, QR = Average |
| 2) Line Infantry | 14/2 | Strength = 9, QR = Average |
| 3) Line Infantry | 14/3 | Strength = 9, QR = Average |
| 4) Line Infantry | 59/1 | Strength = 9, QR = Average |
| 5) Line Infantry | 59/2 | Strength = 9, QR = Average |
| 6) Line Infantry | 59/3 | Strength = 9, QR = Average |
| 7) Foot Artillery | | Medium Artillery, Strength = 4, QR = Average |

Infantry Brigade: Weissenwolff

8) Line Infantry	4/1	Strength = 9, QR = Average
9) Line Infantry	4/2	Strength = 9, QR = Average
10) Line Infantry	4/3	Strength = 9, QR = Average
11) Line Infantry	49/1	Strength = 9, QR = Average
12) Line Infantry	49/2	Strength = 9, QR = Average
13) Line Infantry	49/3	Strength = 9, QR = Average
14) Foot Artillery		Medium Artillery, Strength = 4, QR = Average
Division Artillery:		
15) Foot Artillery		Medium Artillery, Strength = 3, QR = Average

Units: 2nd Infantry Division: Jellacic

Infantry Brigade: Hoffeneck

1) Line Infantry	31/1	Strength = 9, QR = Average
2) Line Infantry	31/2	Strength = 9, QR = Average
3) Line Infantry	31/3	Strength = 9, QR = Average
4) Line Infantry	51/1	Strength = 9, QR = Average
5) Line Infantry	51/2	Strength = 9, QR = Average
6) Line Infantry	51/3	Strength = 9, QR = Average
7) Foot Artillery		Medium Artillery, Strength = 4, QR = Average

Infantry Brigade: Hoffmeister

8) Line Infantry	32/1	Strength = 9, QR = Average
9) Line Infantry	32/2	Strength = 9, QR = Average
10) Line Infantry	32/3	Strength = 9, QR = Average
11) Line Infantry	45/1	Strength = 9, QR = Average
12) Line Infantry	45/2	Strength = 9, QR = Average
13) Line Infantry	45/3	Strength = 9, QR = Average
14) Foot Artillery		Medium Artillery, Strength = 4, QR = Average

Division Artillery:

15) Foot Artillery		Medium Artillery, Strength = 3, QR = Average
--------------------	--	----------------------------------------------

Units: Light Division: Vincent

Light Brigade: Provencheres

1) Grenze	5/1	Light, Strength = 9, QR = Average
2) Grenze	5/2	Light, Strength = 9, QR = Average
3) Grenze Foot Artillery		Light Artillery, Strength = 4, QR = Average
4) Vienna Freicorps	4 th	Strength = 9, QR = Average
5) Vienna Freicorps	5 th	Strength = 9, QR = Average
6) Vienna Freicorps	6 th	Strength = 9, QR = Average
7) O'Reilly Chevauleger		Light Cavalry, Strength = 7, QR = Average
8) Horse Artillery		Medium Artillery, Strength = 3, QR = Average

Light Brigade: Nordmann

9) Grenze	6/1	Light, Strength = 9, QR = Average
10) Grenze	6/2	Light, Strength = 9, QR = Average
11) Grenze Foot Artillery		Light Artillery, Strength = 4, QR = Average
12) Rosenberg Chevauleger		Light Cavalry, Strength = 7, QR = Average
13) Liechtenstein Hussars		Light Cavalry, Strength = 7, QR = Average
14) Horse Artillery		Medium Artillery, Strength = 3, QR = Average

Units: Corps Reserve Artillery

1) Foot Artillery		Heavy Artillery, Strength = 3, QR = Average
2) Foot Artillery		Heavy Artillery, Strength = 3, QR = Average
3) Foot Artillery		Heavy Artillery, Strength = 3, QR = Average
4) Foot Artillery		Medium Artillery, Strength = 3, QR = Average

```

-----
| AUSTRIAN I RESERVE CORPS |
| AT ECKMUHL | JOHANNES
-----

```

```

|
|
-----
|RES|
|DIV|
-----

```

```

|
|-----
|
|
-----
|INF| |CAV| |CAV| |CAV|
|BRG| |BRG| |BRG| |BRG|
-----

```

```

|
|
-----
|INF| |HVY| |HVY| |MED|
|BTN| |CAV| |CAV| |CAV|
-----

```

```

|INF| |HVY| |HVY| |MED|
|BTN| |CAV| |CAV| |CAV|
-----

```

```

|INF| |MED| |MED| |MED|
|BTN| |HRS| |HRS| |HRS|
-----

```

```

-----
|INF|
|BTN|
-----

```

```

-----
|INF|
|BTN|
-----

```

```

-----
|INF|
|BTN|
-----

```

```

-----
|INF|
|BTN|
-----

```

```

-----
|INF|
|BTN|
-----

```

```

-----
|INF|
|BTN|
-----

```

```

-----
|MED|
|ART|
-----

```

```

-----
|MED|
|ART|
-----

```

Summary:

- 12 Infantry Battalions
- 6 Cavalry Regiments
- 5 Artillery Batteries

AUSTRIAN I RESERVE CORPS at Eckmuhl under Johannes**Units: 1st Division: Freidrich**

Infantry Brigade: Hessen-Homberg

1) Grenadiers	May	Strength = 9, QR = Veteran
2) Grenadiers	Lei	Strength = 9, QR = Veteran
3) Grenadiers	Hoh	Strength = 9, QR = Veteran
4) Grenadiers	Hau	Strength = 9, QR = Veteran
5) Grenadiers	Cap	Strength = 9, QR = Veteran
6) Grenadiers	Pec	Strength = 9, QR = Veteran
7) Grenadiers	Wei	Strength = 9, QR = Veteran
8) Grenadiers	Nis	Strength = 9, QR = Veteran
9) Grenadiers	Sta	Strength = 9, QR = Veteran
10) Grenadiers	Geo	Strength = 9, QR = Veteran
11) Grenadiers	Biss	Strength = 9, QR = Veteran
12) Grenadiers	Hah	Strength = 9, QR = Veteran
13) Foot Artillery		Medium Artillery, Strength = 4, QR = Average
14) Foot Artillery		Medium Artillery, Strength = 4, QR = Average

Cavalry Brigade: Seigenthal

1) Cuirassiers	3 rd	Heavy Cavalry, Strength = 7, QR = Veteran
2) Cuirassiers	2 nd	Heavy Cavalry, Strength = 7, QR = Veteran
3) Horse Artillery		Medium Artillery, Strength = 3, QR = Average

Cavalry Brigade: Lederer

4) Cuirassiers	4 th	Heavy Cavalry, Strength = 7, QR = Veteran
5) Cuirassiers	8 th	Heavy Cavalry, Strength = 7, QR = Veteran
6) Horse Artillery		Medium Artillery, Strength = 3, QR = Average

Cavalry Brigade:

7) Dragoons	6 th	Medium Cavalry, Strength = 6, QR = Average
8) Dragoons	1 st	Medium Cavalry, Strength = 6, QR = Average
9) Horse Artillery		Medium Artillery, Strength = 3, QR = Average

```

-----
| AUSTRIAN II RESERVE CORPS |
| AT ECKMUHL                 | KIENMAYER
-----

```

```

-----
| RES |
| DIV |
-----

```

```

-----
| INF | | CAV | | CAV | | CAV |
| BRG | | BRG | | BRG | | BRG |
-----

```

```

-----
| INF | | HVY | | HVY | | MED |
| BTN | | CAV | | CAV | | CAV |
-----

```

```

-----
| INF | | HVY | | HVY | | MED |
| BTN | | CAV | | CAV | | CAV |
-----

```

```

-----
| INF | | MED | | MED | | MED |
| BTN | | HRS | | HRS | | HRS |
-----

```

```

-----
| INF |
| BTN |
-----

```

```

-----
| INF |
| BTN |
-----

```

```

-----
| MED |
| ART |
-----

```

Summary:

- 5 Infantry Battalions
- 4 Cavalry Regiments
- 3 Artillery Batteries

AUSTRIAN II RESERVE CORPS at Eckmuhl under Kienmayer

Units: 1st Division: Freidrich

Infantry Brigade: d'Aspre

- | | | |
|-------------------|-----|----------------------------------------------|
| 1) Grenadiers | Put | Strength = 8, QR = Veteran |
| 2) Grenadiers | Bre | Strength = 8, QR = Veteran |
| 3) Grenadiers | Sco | Strength = 8, QR = Veteran |
| 4) Grenadiers | Kir | Strength = 8, QR = Veteran |
| 5) Grenadiers | Sch | Strength = 8, QR = Veteran |
| 6) Foot Artillery | | Medium Artillery, Strength = 4, QR = Average |

Cavalry Brigade: Schneller

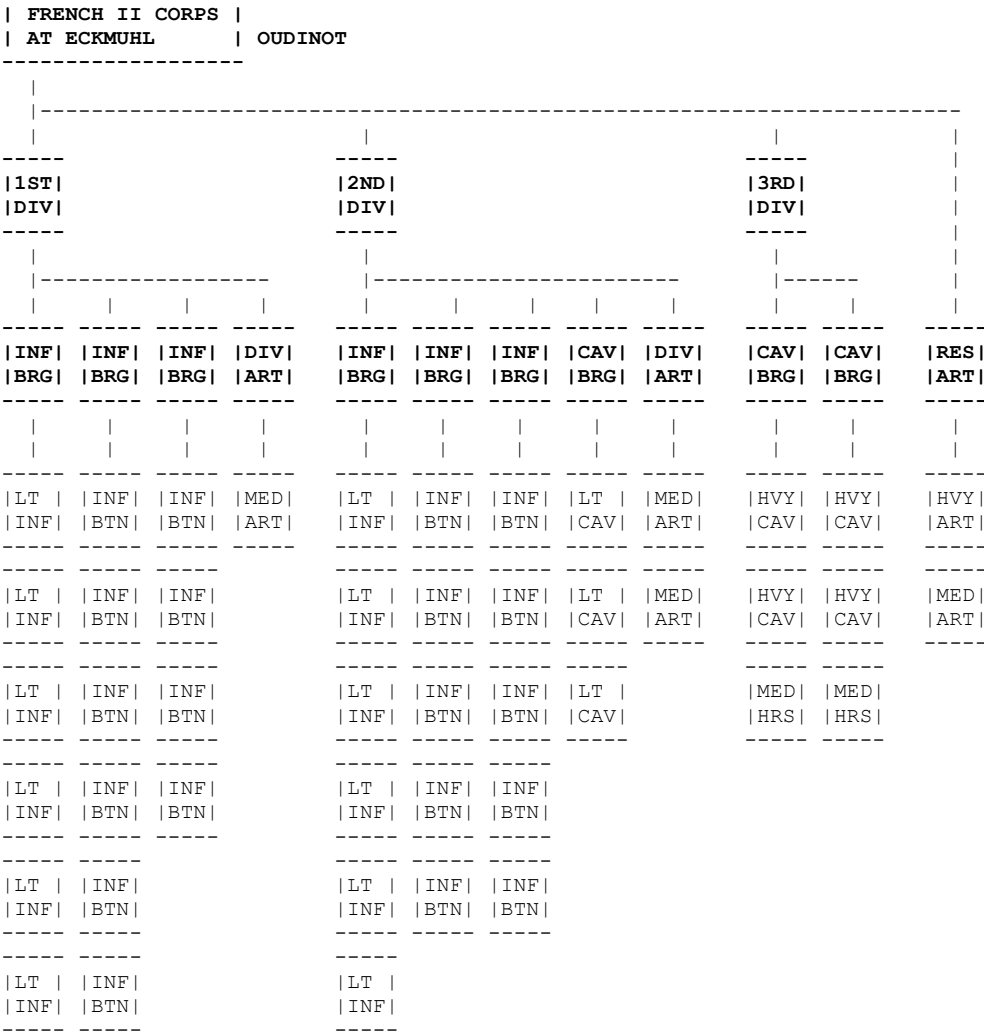
- | | | |
|--------------------|-----------------|----------------------------------------------|
| 7) Cuirassiers | 1 st | Heavy Cavalry, Strength = 4, QR = Veteran |
| 8) Cuirassiers | 6 th | Heavy Cavalry, Strength = 4, QR = Veteran |
| 9) Horse Artillery | | Medium Artillery, Strength = 3, QR = Average |

Cavalry Brigade: Clary

- | | | |
|---------------------|-----------------|----------------------------------------------|
| 10) Dragoons | 4 th | Medium Cavalry, Strength = 3, QR = Average |
| 11) Dragoons | 3 rd | Medium Cavalry, Strength = 3, QR = Average |
| 12) Horse Artillery | | Medium Artillery, Strength = 3, QR = Average |

Eckmuhl: 22 April 1809

The French Army commanded by Napoleon



Summary:
32 Infantry Battalions
7 Cavalry Regiments
7 Artillery Batteries

FRENCH II CORPS at Wagram under Oudinot

Units: 1st Infantry Division: Tharreau

- Infantry Brigade: Conroux
- 1) Light Infantry 6/4 Light, Strength = 5, QR = Average
 - 2) Light Infantry 24/4 Light, Strength = 5, QR = Average
 - 3) Light Infantry 25/4 Light, Strength = 5, QR = Average
 - 4) Light Infantry 9/4 Light, Strength = 5, QR = Average
 - 5) Light Infantry 27/4 Light, Strength = 5, QR = Average
 - 6) Light Infantry 16/4 Light, Strength = 5, QR = Average
- Infantry Brigade: Albert
- 7) Line Infantry 8/4 Strength = 5, QR = Average
 - 8) Line Infantry 24/4 Strength = 3, QR = Average
 - 9) Line Infantry 45/4 Strength = 5, QR = Average
 - 10) Line Infantry 94/4 Strength = 5, QR = Average
 - 11) Line Infantry 95/4 Strength = 5, QR = Average
 - 12) Line Infantry 96/4 Strength = 4, QR = Average

Infantry Brigade: Jarry
 13) Line Infantry 4/4 Strength = 5, QR = Average
 14) Line Infantry 18/4 Strength = 5, QR = Average
 15) Line Infantry 54/4 Strength = 4, QR = Average
 16) Line Infantry 63/4 Strength = 5, QR = Average

Division Artillery:
 17) Foot Artillery Medium Artillery, Strength = 4, QR = Average

Units: 2nd Infantry Division: Claparede

Infantry Brigade: Coehorn
 1) Light Infantry 17/4 Light, Strength = 6, QR = Average
 2) Light Infantry 21/4 Light, Strength = 5, QR = Average
 3) Light Infantry 28/4 Light, Strength = 5, QR = Average
 4) Light Infantry 26/4 Light, Strength = 5, QR = Average
 5) Light Infantry Po Light, Strength = 11, QR = Average
 6) Light Infantry TC Light, Strength = 9, QR = Average

Infantry Brigade: Lesuire
 7) Line Infantry 27/4 Strength = 5, QR = Average
 8) Line Infantry 39/4 Strength = 5, QR = Average
 9) Line Infantry 59/4 Strength = 5, QR = Average
 10) Line Infantry 69/4 Strength = 5, QR = Average
 11) Line Infantry 76/4 Strength = 5, QR = Average

Infantry Brigade: Ficatier
 12) Line Infantry 40/4 Strength = 5, QR = Average
 13) Line Infantry 88/4 Strength = 5, QR = Average
 14) Line Infantry 64/4 Strength = 5, QR = Average
 15) Line Infantry 100/4 Strength = 4, QR = Average
 16) Line Infantry 103/4 Strength = 4, QR = Average

Division Artillery:
 17) Foot Artillery Medium Artillery, Strength = 3, QR = Average
 18) Foot Artillery Medium Artillery, Strength = 3, QR = Average

Units: Cavalry Brigade: Colbert

Cavalry Brigade:
 1) Chasseurs a Cheval 7th Light Cavalry, Strength = 6, QR = Average
 2) Chasseurs a Cheval 20th Light Cavalry, Strength = 8, QR = Average
 3) Hussars 9th Light Cavalry, Strength = 8, QR = Average

Units: Attached Cavalry Division: d'Espagne

Cavalry Brigade: Raynaud
 1) Cuirassiers 4th Light Cavalry, Strength = 7, QR = Veteran
 2) Cuirassiers 6th Light Cavalry, Strength = 7, QR = Veteran
 3) Horse Artillery Medium Artillery, Strength = 3, QR = Average

Cavalry Brigade: Fouler
 1) Cuirassiers 7th Light Cavalry, Strength = 7, QR = Veteran
 2) Cuirassiers 8th Light Cavalry, Strength = 9, QR = Veteran
 3) Horse Artillery Medium Artillery, Strength = 3, QR = Average

Units: Corps Reserve Artillery

1) Foot Artillery Heavy Artillery, Strength = 6, QR = Average
 2) Foot Artillery Medium Artillery, Strength = 6, QR = Average

 | FRENCH III CORPS |
 | AT ECKMUHL | DAVOUT

(Continued)----->>

 |1ST|
DIV

 |2ND|
DIV

 |3RD|
DIV

 | INF | | INF | | DIV |
 | BRG | | BRG | | ART |

 | INF | | INF | | INF | | INF | | DIV |
 | BRG | | BRG | | BRG | | BRG | | ART |

 | INF | | INF | | INF | | DIV |
 | BRG | | BRG | | BRG | | ART |

 | LT | | INF | | MED |
 | INF | | BTN | | ART |

 | LT | | INF | | INF | | INF | | MED |
 | INF | | BTN | | BTN | | BTN | | ART |

 | LT | | INF | | INF | | MED |
 | INF | | BTN | | BTN | | ART |

 | LT | | INF | | MED |
 | INF | | BTN | | HRS |

 | LT | | INF | | INF | | INF |
 | INF | | BTN | | BTN | | BTN |

 | LT | | INF | | INF | | MED |
 | INF | | BTN | | BTN | | HRS |

 | LT | | INF |
 | INF | | BTN |

 | LT | | INF | | INF | | INF |
 | INF | | BTN | | BTN | | BTN |

 | LT | | INF | | INF |
 | INF | | BTN | | BTN |

 | INF | | INF |
 | BTN | | BTN |

 | INF |
BTN

 | INF | | INF |
 | BTN | | BTN |

 | INF | | INF |
 | BTN | | BTN |

 | INF |
BTN

 | INF | | INF |
 | BTN | | BTN |

 | INF | | INF |
 | BTN | | BTN |

 | INF |
BTN

 | INF | | INF |
 | BTN | | BTN |

 | INF |
BTN

 | INF |
BTN

 | INF |
BTN

>>-----

4TH			RES			CAV		DIV			
DIV			DIV			DIV		DIV			
-----			-----			-----		-----			
INF INF DIV			INF INF INF			CAV CAV		CAV CAV CAV			RES
BRG BRG ART			BRG BRG BRG			BRG BRG		BRG BRG BRG			ART
-----			-----			-----		-----			-----
LT	INF	MED	INF	INF	INF	HVY	HVY	LT	LT	LT	HVY
INF	BTN	ART	BTN	BTN	BTN	CAV	CAV	CAV	CAV	CAV	ART
-----			-----			-----		-----			-----
LT	INF	MED	INF	INF	INF	HVY	HVY	LT	LT	LT	HVY
INF	BTN	HRS	BTN	BTN	BTN	CAV	CAV	CAV	CAV	CAV	ART
-----			-----			-----		-----			-----
LT	INF		INF		INF	MED		LT		LT	
INF	BTN		BTN		BTN	HRS		CAV		CAV	
-----			-----			-----		-----			-----
INF	INF		INF		INF						
BTN	BTN		BTN		BTN						
-----			-----			-----		-----			-----
INF	INF										
BTN	BTN										
-----			-----			-----		-----			-----
INF	INF										
BTN	BTN										
-----			-----			-----		-----			-----
INF											
BTN											
-----			-----			-----		-----			-----
INF											
BTN											
-----			-----			-----		-----			-----

Summary:
 70 Infantry Battalions
 12 Cavalry Regiments
 10 Artillery Batteries

FRENCH III CORPS at Eckmuhl under Davout

Units: 1st Infantry Division: Morand

Infantry Brigade: Lacour

- 1) Light Infantry 13/1 Light, Strength = 6, QR = Average
- 2) Light Infantry 13/2 Light, Strength = 6, QR = Average
- 3) Light Infantry 13/3 Light, Strength = 6, QR = Average
- 4) Line Infantry 17/1 Strength = 8, QR = Average
- 5) Line Infantry 17/2 Strength = 8, QR = Average
- 6) Line Infantry 17/3 Strength = 8, QR = Average
- 7) Line Infantry 30/1 Strength = 7, QR = Average
- 8) Line Infantry 30/2 Strength = 7, QR = Average
- 9) Line Infantry 30/3 Strength = 7, QR = Average

Infantry Brigade: l'Huilier

10) Line Infantry	61/1	Strength = 7, QR = Average
11) Line Infantry	61/2	Strength = 7, QR = Average
12) Line Infantry	61/3	Strength = 7, QR = Average
13) Line Infantry	65/1	Strength = 7, QR = Average
14) Line Infantry	65/2	Strength = 7, QR = Average
15) Line Infantry	65/3	Strength = 7, QR = Average

Division Artillery:

16) Foot Artillery	Medium Artillery, Strength = 4, QR = Average
17) Horse Artillery	Medium Artillery, Strength = 3, QR = Average

Units: 2nd Infantry Division: Friant

Infantry Brigade: Gilly

1) Light Infantry	15/1	Light, Strength = 8, QR = Average
2) Light Infantry	15/2	Light, Strength = 7, QR = Average
3) Light Infantry	15/3	Light, Strength = 7, QR = Average
4) Line Infantry	33/1	Strength = 7, QR = Average
5) Line Infantry	33/2	Strength = 7, QR = Average
6) Line Infantry	33/3	Strength = 7, QR = Average

Infantry Brigade: Grandeau

7) Line Infantry	108/1	Strength = 7, QR = Average
8) Line Infantry	108/2	Strength = 7, QR = Average
9) Line Infantry	108/3	Strength = 7, QR = Average

Infantry Brigade: Hervo

10) Line Infantry	111/1	Strength = 8, QR = Average
11) Line Infantry	111/2	Strength = 7, QR = Average
12) Line Infantry	111/3	Strength = 7, QR = Average

Infantry Brigade: Barbanegre

13) Line Infantry	48/1	Strength = 8, QR = Average
14) Line Infantry	48/2	Strength = 7, QR = Average
15) Line Infantry	48/3	Strength = 7, QR = Average

Division Artillery:

16) Foot Artillery	Medium Artillery, Strength = 4, QR = Average
--------------------	----------------------------------------------

Units: 3rd Infantry Division: Gudin

Infantry Brigade: Petit

1) Light Infantry	7/1	Light, Strength = 10, QR = Average
2) Light Infantry	7/2	Light, Strength = 9, QR = Average
3) Light Infantry	7/3	Light, Strength = 9, QR = Average

Infantry Brigade: Boyer

4) Line Infantry	12/1	Strength = 7, QR = Average
5) Line Infantry	12/2	Strength = 7, QR = Average
6) Line Infantry	12/3	Strength = 7, QR = Average
7) Line Infantry	21/1	Strength = 7, QR = Average
8) Line Infantry	21/2	Strength = 7, QR = Average
9) Line Infantry	21/3	Strength = 7, QR = Average

Infantry Brigade: Dupellin

10) Line Infantry	25/1	Strength = 6, QR = Average
11) Line Infantry	25/2	Strength = 6, QR = Average
12) Line Infantry	25/3	Strength = 6, QR = Average
13) Line Infantry	85/1	Strength = 8, QR = Average
14) Line Infantry	85/2	Strength = 7, QR = Average
15) Line Infantry	85/3	Strength = 7, QR = Average

Division Artillery:

16) Foot Artillery	Medium Artillery, Strength = 3, QR = Average
17) Horse Artillery	Light Artillery, Strength = 3, QR = Average

Units: 4th Infantry Division: St Hilaire

Infantry Brigade: Lorencez

1) Light Infantry	10/1	Light, Strength = 9, QR = Average
2) Light Infantry	10/2	Light, Strength = 8, QR = Average
3) Light Infantry	10/3	Light, Strength = 8, QR = Average
4) Line Infantry	3/1	Strength = 7, QR = Average
5) Line Infantry	3/2	Strength = 7, QR = Average
6) Line Infantry	3/3	Strength = 7, QR = Average
7) Line Infantry	57/1	Strength = 7, QR = Average
8) Line Infantry	57/2	Strength = 7, QR = Average
9) Line Infantry	57/3	Strength = 7, QR = Average

Infantry Brigade: Destabenrath

10) Line Infantry	72/1	Strength = 8, QR = Average
11) Line Infantry	72/2	Strength = 7, QR = Average
12) Line Infantry	72/3	Strength = 7, QR = Average
13) Line Infantry	105/1	Strength = 6, QR = Average
14) Line Infantry	105/2	Strength = 6, QR = Average
15) Line Infantry	105/3	Strength = 6, QR = Average

Division Artillery:

16) Foot Artillery	Medium Artillery, Strength = 4, QR = Average
17) Horse Artillery	Medium Artillery, Strength = 3, QR = Average

Units: Reserve Division: Demont

Infantry Brigade:

1) Line Infantry	17/4	Strength = 7, QR = Average
2) Line Infantry	30/4	Strength = 2, QR = Average
3) Line Infantry	61/4	Strength = 2, QR = Average
4) Line Infantry	65/4	Strength = 2, QR = Average

Infantry Brigade:

5) Line Infantry	33/4	Strength = 2, QR = Average
6) Line Infantry	111/4	Strength = 3, QR = Average

Infantry Brigade:

7) Line Infantry	7/4	Strength = 4, QR = Average
8) Line Infantry	21/4	Strength = 8, QR = Average
9) Line Infantry	12/4	Strength = 3, QR = Average
10) Line Infantry	85/4	Strength = 3, QR = Average

Units: Heavy Cavalry Division: St Suplice

Cavalry Brigade: Clement

1) Cuirassiers	1 st	Heavy Cavalry, Strength = 8, QR = Veteran
2) Cuirassiers	5 th	Heavy Cavalry, Strength = 8, QR = Veteran

Cavalry Brigade: Guiton

3) Cuirassiers	10 th	Heavy Cavalry, Strength = 9, QR = Veteran
4) Cuirassiers	11 th	Heavy Cavalry, Strength = 8, QR = Veteran
5) Horse Artillery		Medium Artillery, Strength = 3, QR = Average

Units: Light Cavalry Division: Montbrun

Cavalry Brigade: Jacquinet

1) Chasseurs a Cheval	1 st	Light Cavalry, Strength = 6, QR = Average
2) Chasseurs a Cheval	2 nd	Light Cavalry, Strength = 5, QR = Average
3) Chasseurs a Cheval	12 th	Light Cavalry, Strength = 8, QR = Average

Cavalry Brigade: Pire

4) Hussars	8 th	Light Cavalry, Strength = 9, QR = Average
5) Chasseurs a Cheval	16 th	Light Cavalry, Strength = 7, QR = Average

Cavalry Brigade: Pajol

6) Hussars	7 th	Light Cavalry, Strength = 6, QR = Average
7) Hussars	8 th	Light Cavalry, Strength = 6, QR = Average
8) Chasseurs a Cheval	16 th	Light Cavalry, Strength = 7, QR = Average

Units: Corps Reserve Artillery

1) Foot Artillery	Heavy Artillery, Strength = 4, QR = Average
2) Foot Artillery	Heavy Artillery, Strength = 3, QR = Average

```

-----
| FRENCH IV CORPS |
| AT ECKMUHL     | MASSENA
-----

```

(Continued)----->>

```

-----
|1ST|          |2ND|          |3RD|          |4TH|
|DIV|          |DIV|          |DIV|          |DIV|
-----
|-----|          |-----|          |-----|          |-----| | | | | | | | | | | | | | | | | | |
|-----|          |-----|          |-----|          |-----|
|INF| |INF| |DIV| |INF| |INF| |INF| |DIV| |INF| |INF| |DIV| |INF| |INF| |DIV|
|BRG| |BRG| |ART| |BRG| |BRG| |BRG| |ART| |BRG| |BRG| |ART| |BRG| |BRG| |ART|
-----
|   | |   | |   | |   | |   | |   | |   | |   | |   | |   | |   | | | | |
|LT | |LT | |MED| |LT | |INF| |INF| |MED| |INF| |INF| |MED| |LT | |INF| |MED|
|INF| |INF| |ART| |INF| |BTN| |BTN| |ART| |BTN| |BTN| |ART| |INF| |BTN| |ART|
-----
|LT | |INF| |MED| |LT | |INF| |INF| |MED| |INF| |INF| |INF| |LT | |INF|
|INF| |BTN| |HRS| |INF| |BTN| |BTN| |HRS| |BTN| |BTN| |INF| |INF| |BTN|
-----
|LT | |INF| |MED| |LT | |INF| |INF| |MED| |INF| |INF| |INF| |INF| |INF|
|INF| |BTN| |ART| |INF| |BTN| |BTN| |ART| |BTN| |BTN| |BTN| |BTN| |BTN|
-----
|INF| |INF| |MED| |INF| |INF| |INF| |INF| |INF| |INF| |INF| |INF|
|BTN| |BTN| |ART| |BTN| |BTN| |BTN| |BTN| |BTN| |BTN| |BTN| |BTN|
-----
|INF| |INF| |INF| |INF| |INF| |INF| |INF| |INF| |INF| |INF|
|BTN| |BTN| |BTN| |BTN| |BTN| |BTN| |BTN| |BTN| |BTN| |BTN| |BTN|
-----
|INF| |INF| |INF| |INF| |INF| |INF| |INF| |INF| |INF| |INF|
|BTN| |BTN| |BTN| |BTN| |BTN| |BTN| |BTN| |BTN| |BTN| |BTN| |BTN|
-----
|INF|
|BTN|
-----

```

```

>>-----
|
|-----|
|CAV|
|DIV|
-----
|-----|
|-----|
|CAV| |CAV| |CAV| |RES|
|BRG| |BRG| |BRG| |ART|
-----
|   | |   | |   | |   |
|LT | |LT | |LT | |HVY|
|CAV| |CAV| |CAV| |ART|
-----
|LT | |LT | |LT |
|CAV| |CAV| |CAV|
-----

```

Summary:
45 Infantry Battalions
6 Cavalry Regiments
10 Artillery Batteries

FRENCH IV CORPS at Wagram under Massena**Units: 1st Infantry Division: Legrand**

Infantry Brigade: Ledru

1) Light Infantry	26/1	Light, Strength = 7, QR = Average
2) Light Infantry	26/2	Light, Strength = 7, QR = Average
3) Light Infantry	26/3	Light, Strength = 6, QR = Average
4) Line Infantry	18/1	Strength = 8, QR = Average
5) Line Infantry	18/2	Strength = 8, QR = Average
6) Line Infantry	18/3	Strength = 8, QR = Average

Infantry Brigade (Baden): Harrant

7) Jager	Bad/1	Light, Strength = 8, QR = Average
8) Line Infantry	Bad/2	Strength = 8, QR = Average
9) Line Infantry	Bad/3	Strength = 8, QR = Average
10) Line Infantry	Bad/4	Strength = 8, QR = Average
11) Line Infantry	Bad/5	Strength = 8, QR = Average
12) Line Infantry	Bad/6	Strength = 8, QR = Average
13) Line Infantry	Bad/7	Strength = 8, QR = Average

Division Artillery:

14) Foot Artillery	Medium Artillery, Strength = 4, QR = Average
15) Horse Artillery	Medium Artillery, Strength = 3, QR = Average
16) Baden Foot Artillery	Medium Artillery, Strength = 4, QR = Average
17) Baden Horse Artillery	Medium Artillery, Strength = 2, QR = Average

Units: 2nd Infantry Division: Saint-Cyr

Infantry Brigade: Cosson

1) Light Infantry	24/1	Light, Strength = 8, QR = Average
2) Light Infantry	24/2	Light, Strength = 7, QR = Average
3) Light Infantry	24/3	Light, Strength = 7, QR = Average

Infantry Brigade: Dalesme

4) Line Infantry	4/1	Strength = 8, QR = Average
5) Line Infantry	4/2	Strength = 7, QR = Average
6) Line Infantry	4/3	Strength = 7, QR = Average
7) Line Infantry	46/1	Strength = 8, QR = Average
8) Line Infantry	46/2	Strength = 8, QR = Average
9) Line Infantry	46/3	Strength = 7, QR = Average

Infantry Brigade (Hesse-Darmstadt): Nagel

10) Leib Garde	HD/1	Strength = 7, QR = Average
11) Leib Garde	HD/2	Strength = 7, QR = Average
12) Leib Garde Fusilier s	HD/3	Strength = 7, QR = Average
13) Leib Fusiliers	HD/4	Strength = 7, QR = Average
14) Leib Fusiliers	HD/5	Strength = 7, QR = Average
15) Musketeers	HD/6	Strength = 7, QR = Average

Division Artillery:

16) Foot Artillery	Medium Artillery, Strength = 4, QR = Average
17) Horse Artillery	Medium Artillery, Strength = 3, QR = Average
18) Foot Artillery	HD Medium Artillery, Strength = 3, QR = Average

Units: 3rd Infantry Division: Molitor

Infantry Brigade: Leguay

1) Line Infantry	2/1	Strength = 8, QR = Average
2) Line Infantry	2/2	Strength = 8, QR = Average
3) Line Infantry	16/1	Strength = 7, QR = Average
4) Line Infantry	16/2	Strength = 7, QR = Average
5) Line Infantry	16/3	Strength = 7, QR = Average

Infantry Brigade: Viviez

6) Line Infantry	37/1	Strength = 6, QR = Average
7) Line Infantry	37/2	Strength = 6, QR = Average
8) Line Infantry	37/3	Strength = 5, QR = Average
9) Line Infantry	67/1	Strength = 7, QR = Average
10) Line Infantry	67/2	Strength = 7, QR = Average

Division Artillery:

11) Foot Artillery	Medium Artillery, Strength = 3, QR = Average
--------------------	----------------------------------------------

Units: 4th Infantry Division: Boudet

Infantry Brigade: Fririon

- | | | |
|-------------------|-----|-----------------------------------|
| 1) Light Infantry | 3/1 | Light, Strength = 8, QR = Average |
| 2) Light Infantry | 3/2 | Light, Strength = 8, QR = Average |

Infantry Brigade: Valory

- | | | |
|------------------|------|----------------------------|
| 3) Line Infantry | 56/1 | Strength = 8, QR = Average |
| 4) Line Infantry | 56/2 | Strength = 8, QR = Average |
| 5) Line Infantry | 56/3 | Strength = 7, QR = Average |
| 6) Line Infantry | 93/1 | Strength = 7, QR = Average |
| 7) Line Infantry | 93/2 | Strength = 7, QR = Average |

Division Artillery:

- | | | |
|-------------------|--|----------------------------------------------|
| 8) Foot Artillery | | Medium Artillery, Strength = 3, QR = Average |
|-------------------|--|----------------------------------------------|

Units: Cavalry Division: Marulaz

Cavalry Brigade:

- | | | |
|-----------------------|------------------|-------------------------------------------|
| 1) Chasseurs a Cheval | 23 rd | Light Cavalry, Strength = 6, QR = Average |
| 2) Chasseurs | 19 th | Light Cavalry, Strength = 6, QR = Average |

Cavalry Brigade:

- | | | |
|-----------------------|------------------|-------------------------------------------|
| 3) Chasseurs a Cheval | 3 rd | Light Cavalry, Strength = 6, QR = Average |
| 4) Chasseurs a Cheval | 14 th | Light Cavalry, Strength = 4, QR = Average |

Cavalry Brigade:

- | | | |
|-------------------------|--|-------------------------------------------|
| 5) Baden Light Dragoons | | Light Cavalry, Strength = 4, QR = Average |
| 6) Hesse D Chevauleger | | Light Cavalry, Strength = 4, QR = Average |

Units: Corps Reserve Artillery

- | | | |
|-------------------|--|---------------------------------------------|
| 1) Foot Artillery | | Heavy Artillery, Strength = 4, QR = Average |
|-------------------|--|---------------------------------------------|

Units: 2nd Infantry Division: Wrede

Infantry Brigade (Bavarian): Minuzzi

1) Light Infantry	1 st	Light, Strength = 8, QR = Average
2) Line Infantry	3/1	Strength = 8, QR = Average
3) Line Infantry	3/2	Strength = 8, QR = Average
4) Line Infantry	13/1	Strength = 8, QR = Average
5) Line Infantry	13/2	Strength = 8, QR = Average

Infantry Brigade (Bavarian): Beckers

6) Line Infantry	6/1	Strength = 7, QR = Average
7) Line Infantry	6/2	Strength = 7, QR = Average
8) Line Infantry	7/1	Strength = 8, QR = Average
9) Line Infantry	7/2	Strength = 8, QR = Average

Cavalry Brigade (Bavarian): Preysing

10) Chevauleger	Kon	Light Cavalry, Strength = 5, QR = Average
11) Chevauleger	Len	Light Cavalry, Strength = 5, QR = Average

Division Artillery

12) Foot Artillery		Medium Artillery, Strength = 3, QR = Average
13) Foot Artillery		Medium Artillery, Strength = 3, QR = Average
14) Horse Artillery		Medium Artillery, Strength = 3, QR = Average

Units: 3rd Infantry Division: Deroi

Infantry Brigade (Bavarian): Siebein

1) Light Infantry	5 th	Light, Strength = 8, QR = Average
2) Line Infantry	9/1	Strength = 8, QR = Average
3) Line Infantry	9/2	Strength = 8, QR = Average
4) Line Infantry	10/1	Strength = 8, QR = Average
5) Line Infantry	10/2	Strength = 8, QR = Average

Infantry Brigade (Bavarian): Vincenti

6) Light Infantry	7 th	Light, Strength = 7, QR = Average
7) Line Infantry	6/1	Strength = 8, QR = Average
8) Line Infantry	6/2	Strength = 8, QR = Average
9) Line Infantry	7/1	Strength = 8, QR = Average
10) Line Infantry	7/2	Strength = 8, QR = Average

Cavalry Brigade (Bavarian): Seyderwitz

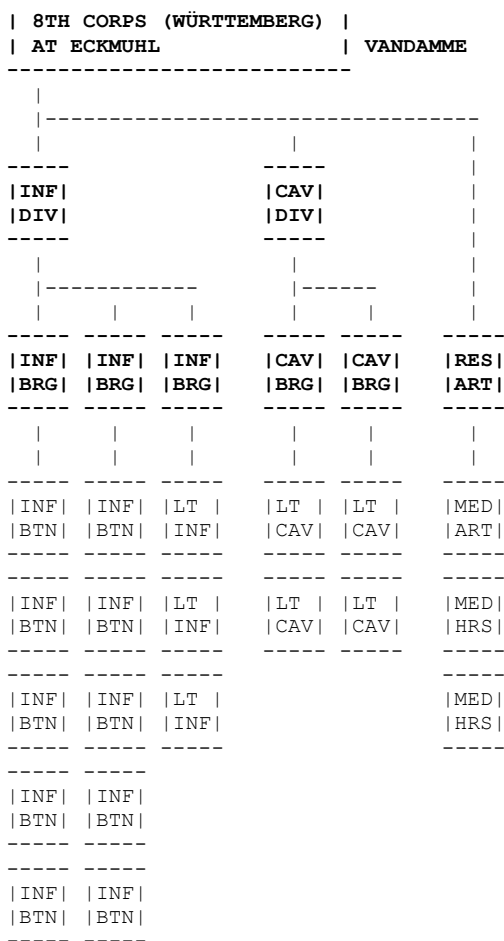
10) Dragoons	Tax	Medium Cavalry, Strength = 6, QR = Average
11) Chevauleger	Bub	Light Cavalry, Strength = 6, QR = Average

Division Artillery

12) Foot Artillery		Medium Artillery, Strength = 3, QR = Average
13) Foot Artillery		Medium Artillery, Strength = 3, QR = Average
14) Horse Artillery		Medium Artillery, Strength = 3, QR = Average

Units: Corps Reserve Artillery

1) Foot Artillery		Heavy Artillery, Strength = 3, QR = Average
2) Foot Artillery		Heavy Artillery, Strength = 3, QR = Average
3) Foot Artillery		Heavy Artillery, Strength = 3, QR = Average



Summary:
 13 Battalions
 4 Cavalry Regiments
 3 Artillery Batteries

8TH CORPS (WÜRTTEMBERG) at Eckmuhl under Vandamme

Units: Infantry Division: Neubronn

- Infantry Brigade: Franquemont
- 1) Fusiliers 1st Strength = 7, QR = Average
 - 2) Line Infantry PR/1 Strength = 7, QR = Average
 - 3) Line Infantry PR/2 Strength = 7, QR = Average
 - 4) Line Infantry DW/1 Strength = 7, QR = Average
 - 5) Line Infantry DW/2 Strength = 7, QR = Average

- Infantry Brigade: Scharfenstein
- 6) Fusiliers 2nd Strength = 7, QR = Average
 - 7) Line Infantry Phu/1 Strength = 7, QR = Average
 - 8) Line Infantry Phu/2 Strength = 7, QR = Average
 - 9) Line Infantry Cam/1 Strength = 7, QR = Average
 - 10) Line Infantry Cam/2 Strength = 7, QR = Average

- Infantry Brigade: Hugel
- 11) Jager Kon Light, Strength = 7, QR = Average
 - 12) Light Infantry 1st Light, Strength = 7, QR = Average
 - 13) Light Infantry 2nd Light, Strength = 7, QR = Average

Units: Cavalry Division: Wollwarth

- Cavalry Brigade: Roeder
- 1) Chevauleger Kon Light Cavalry, Strength = 6, QR = Average
 - 2) Chevauleger DH Light Cavalry, Strength = 6, QR = Average

Cavalry Brigade: Stettner

- 3) Chasseurs a Cheval
- 4) Chasseurs a Cheval

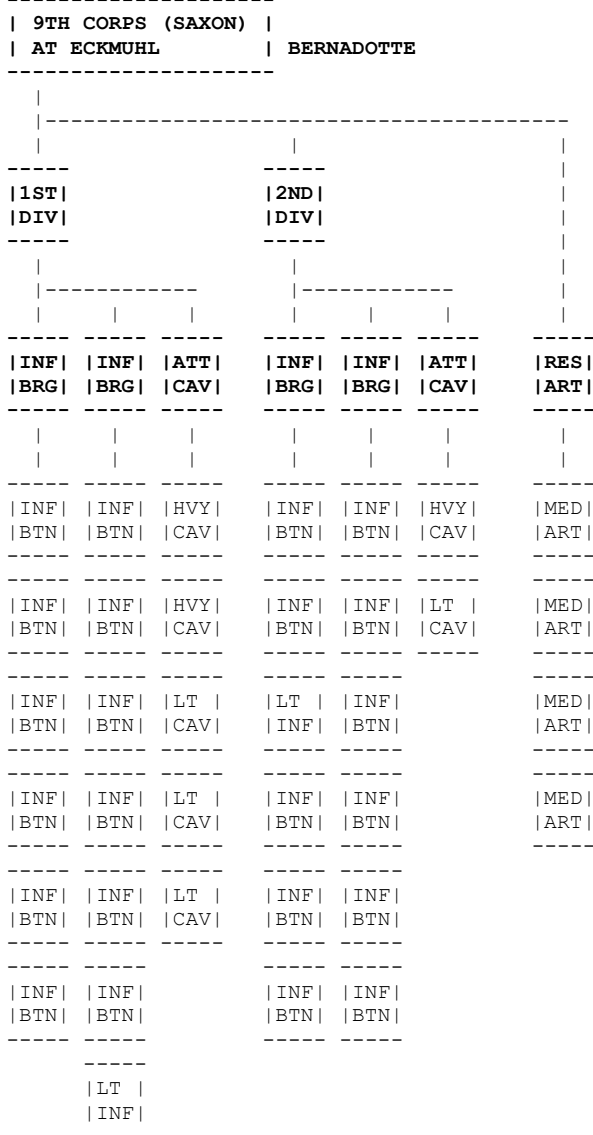
Kon
DL

Light Cavalry, Strength = 6, QR = Average
Light Cavalry, Strength = 6, QR = Average

Units: Reserve Artillery

- 1) Foot Artillery
- 2) Horse Artillery
- 3) Horse Artillery

Medium Artillery, Strength = 4, QR = Average
Medium Artillery, Strength = 3, QR = Average
Medium Artillery, Strength = 3, QR = Average



Summary:

- 25 Infantry Battalions
- 7 Cavalry Regiments
- 4 Artillery Batteries

9TH CORPS (SAXON) at Eckmuhl under Bernadotte

Units: 1st Division (Saxon): Zezschwitz

Infantry Brigade (Saxon): Hartitzsch

- 1) Guard Grenadiers SGG Strength = 3, QR = Veteran
- 2) Grenadiers SG/1 Strength = 5, QR = Average
- 3) Grenadiers SG/2 Strength = 4, QR = Average
- 4) Line Infantry K/1 Strength = 5, QR = Average
- 5) Line Infantry K/2 Strength = 5, QR = Average
- 6) Line Infantry Dyh Strength = 5, QR = Average

Infantry Brigade (Saxon): Boxberg

- 7) Line Infantry PM/1 Strength = 5, QR = Average
- 8) Line Infantry PM/2 Strength = 5, QR = Average
- 9) Line Infantry PF/1 Strength = 5, QR = Average
- 10) Line Infantry PF/2 Strength = 5, QR = Average
- 11) Line Infantry PA/1 Strength = 5, QR = Average
- 12) Line Infantry PA/2 Strength = 5, QR = Average
- 13) Light Infantry Met Light, Strength = 6, QR = Veteran

Attached Cavalry Brigade: Gutschmidt

14) Guard du Corps	GdC	Heavy Cavalry, Strength = 3, QR = Veteran
15) Carabiniers	SCa	Heavy Cavalry, Strength = 2, QR = Veteran
16) Chevauleger	SCh/1	Light Cavalry, Strength = 4, QR = Veteran
17) Hussars	SH	Light Cavalry, Strength = 3, QR = Veteran
18) Chevauleger	SCh/2	Light Cavalry, Strength = 2, QR = Veteran

Units: 2nd Division (Saxon): von Polenz

Infantry Brigade: LeCog

1) Line Infantry	PC/1	Strength = 4, QR = Average
2) Line Infantry	PC/2	Strength = 4, QR = Average
3) Line Infantry	Low/1	Strength = 4, QR = Average
4) Line Infantry	Low/2	Strength = 4, QR = Average
5) Line Infantry	Cer/1	Strength = 4, QR = Average
6) Line Infantry	Cer/2	Strength = 4, QR = Average

Infantry Brigade: Zeschau

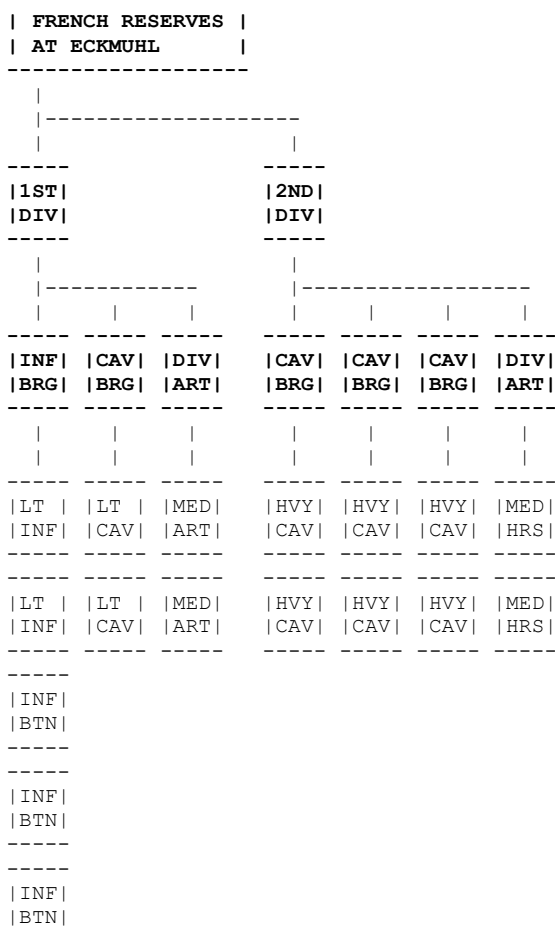
7) Grenadiers	Rad	Strength = 5, QR = Average
8) Grenadiers	Win	Strength = 5, QR = Average
9) Light Infantry	d'Ed	Light, Strength = 5, QR = Veteran
10) Line Infantry	Nie/1	Strength = 5, QR = Average
11) Line Infantry	Nie/2	Strength = 5, QR = Average
12) Line Infantry	Obs	Strength = 5, QR = Average

Attached Cavalry Brigade: Feilitzsch

13) Guard Cuirassiers	SGC	Heavy Cavalry, Strength = 5, QR = Veteran
14) Chevauleger	SCh/3	Light Cavalry, Strength = 5, QR = Veteran

Corps Reserve Artillery:

1) Saxon Foot Artillery	Medium Artillery, Strength = 3, QR = Average
2) Saxon Foot Artillery	Medium Artillery, Strength = 3, QR = Average
3) Saxon Foot Artillery	Medium Artillery, Strength = 3, QR = Average
4) Saxon Foot Artillery	Medium Artillery, Strength = 3, QR = Average



Summary:

- 5 Infantry Battalions
- 8 Cavalry Regiments
- 4 Artillery Batteries

FRENCH RESERVES at Eckmuhl

Units: 1st Reserve Division: Dupas

Infantry Brigade: Glency

- 1) Light Infantry 5/1 Light, Strength = 7, QR = Average
- 2) Light Infantry 5/2 Light, Strength = 7, QR = Average
- 3) Line Infantry 19/1 Strength = 7, QR = Average
- 4) Line Infantry 19/2 Strength = 7, QR = Average
- 5) Line Infantry 19/3 Strength = 7, QR = Average

Cavalry Brigade: Bruyer

- 6) Chasseurs a Cheval 13th Light Cavalry, Strength = 3, QR = Average
- 7) Chasseurs a Cheval 24th Light Cavalry, Strength = 2, QR = Average

Division Artillery:

- 8) Foot Artillery Medium Artillery, Strength = 3, QR = Average
- 9) Foot Artillery Medium Artillery, Strength = 3, QR = Average

Units: 2nd Reserve Division: Nansouty

Cavalry Brigade: Defrance

- 1) Carabiniers 1st Heavy Cavalry, Strength = 9, QR = Veteran
- 2) Carabiniers 2nd Heavy Cavalry, Strength = 9, QR = Veteran

Cavalry Brigade: Doumerc

- 3) Cuirassiers 2nd Heavy Cavalry, Strength = 9, QR = Veteran
- 4) Cuirassiers 9th Heavy Cavalry, Strength = 9, QR = Veteran

Cavalry Brigade: St Germain

- | | | |
|----------------|------------------|-------------------------------------------|
| 5) Cuirassiers | 3 rd | Heavy Cavalry, Strength = 7, QR = Veteran |
| 6) Cuirassiers | 12 th | Heavy Cavalry, Strength = 8, QR = Veteran |

Division Artillery:

- | | | |
|--------------------|--|---------------------------------------------|
| 7) Horse Artillery | | Light Artillery, Strength = 3, QR = Average |
| 8) Horse Artillery | | Light Artillery, Strength = 3, QR = Average |