

## *Black Powder: Club Army Guidelines*

Version 1: February 2013  
(Exodus 20:15 - "Thou shall not steal".)

These guidelines were specifically developed for use at our club (The Novocastrian Battlegamers) for use with the *Black Powder* Napoleonic wargame rules.

We encourage players to re-fight historical actions using actual historical formations, and if doing so, then you must be able to support the size and organisation of your battalions, regiments, brigades, divisions and corps with reputable references. These guidelines include several such historic organisations as a guide.

However, if you can't be bothered doing the research and just want to have a game then we recommend that you field one of the regulation corps used by certain nationalities (or part thereof). These guidelines include several such regulation corps as a guide. (Also see the Order of March rules).

For variety, we have also included some hypothetical forces for some nationalities. The actual mix of troops and the quantity of troops available for these smaller nationalities are as correct as we can determine for that particular nationality and we have also included a possible brigade and division (and corps organisation in some cases) for that particular nationality. However, remember that most of the smaller nationalities involved in the Napoleonic wars rarely fielded a force of any size. Rather they would supply odd units to the major nationality to which they were allied, that is, the units supplied would be deployed within a French corps if they were allied with the French, etc.

### Divisions

<b>INF</b>   An Infantry	<b>CAV</b>   A Cavalry	<b>LT</b>   A Light
<b>DIV</b>   Division	<b>DIV</b>   Division	<b>DIV</b>   Division

The *Black Powder* rules can be played quite comfortably with upto a *Corps* (providing of course you have the troops and the space). A corps is made up of several *Divisions*. Be careful though – some nationalities called their Divisions *Brigades*.

Infantry divisions consist of just infantry units and artillery units. Cavalry Divisions consist of just cavalry units and horse artillery units. Light Divisions consist of a mix of unit types with mainly infantry units, some cavalry units and perhaps a few artillery units.

Each division has a *division commander*. A force with more than one division becomes a *corps*. Each corps has an overall *corps commander*. The minimum force used for a game should probably be two divisions.

### Infantry Brigades

<b>INF</b>   An Infantry	<b>LT</b>   A Light
<b>BRG</b>   Brigade	<b>BRG</b>   Brigade

An *Infantry Brigade* normally consisted of four to six infantry battalions (units) with perhaps one artillery unit attached. However, infantry brigades did vary historically from as little as one battalion to as many as ten battalions with the occasional brigade having two artillery batteries attached. Most nationalities used *Light Brigades* at times which consisted of a mix of infantry, light cavalry and perhaps some artillery.

There are two types of Infantry Battalions:

<b>LT</b>   A Light Infantry	<b>INF</b>   A Line Infantry
<b>INF</b>   Battalion	<b>BTN</b>   Battalion

Light infantry battalions (units) can manoeuvre and fight as normal line infantry battalions but they are also trained to manoeuvre and fight in an open formation, that is, they can deploy into *skirmish order*. Light infantry includes units such as Light Infantry units, Jager units, Grenze units, Rifle units, etc, but can also include some of the better quality line infantry units.

Line Infantry battalions (units) represent the bulk of the infantry units. Line infantry units are not specifically trained to manoeuvre and fight in skirmish order but they can deploy *screens*. Thus, line infantry units cannot use skirmish order but they can use *mixed order*.

## Cavalry Brigades

-----  
|CAV|

BRG

A *Cavalry Brigade* usually consisted of one or two (occasionally three or even rarely four depending upon the circumstances) cavalry regiments (units) and perhaps one attached horse artillery battery (unit). Heavy cavalry brigades did not normally have horse artillery batteries attached though on rare occasions they did. Cavalry brigades did not normally have a mix of cavalry types, but again, occasionally they did.

There are three types of cavalry regiments (units):

-----	-----	-----
LT   A Light Cavalry	MED  A Medium Cavalry	HVY  A Heavy Cavalry
CAV  Regiment	CAV  Regiment	CAV  Regiment
-----	-----	-----

Light Cavalry regiments include cavalry types such as Chevauleger, Chasseurs, Hussars, Lancers, Cossacks, Arab cavalry and the like. Some so-called "medium" cavalry units were not medium at all and so they fall into this light cavalry category.

Medium Cavalry includes Dragoons. Some so-called "heavy" cavalry units were not heavy at all and so they fall into this medium cavalry category.

Heavy Cavalry includes cavalry types such as Cuirassiers, Carabineers, etc. Heavy cavalry units were normally deployed as part of a reserve and were not normally deployed (attached) directly at corps level. However, if they were attached at corps level then they were normally only attached in small numbers, just only a regiment or two.

### Cavalry Battle-Groups

In the *Black Powder* rules cavalry units can be rated as *large*. Under the club's house rules, a large cavalry unit can be split into two *small cavalry battle-groups* (units) before the game. Each of these small cavalry battle-groups then operates as an independent small unit for the entire game. They cannot re-join again later on.

## Artillery

### FOOT ARTILLERY:

-----	-----	-----
LT   A Light Foot	MED  A Medium Foot	HVY  A Heavy Foot
ART  Artillery Battery	ART  Artillery Battery	ART  Artillery Battery
-----	-----	-----

Foot artillery batteries (units) represent the bulk of the artillery batteries. Foot batteries cannot be deployed with cavalry brigades or within cavalry divisions. Foot batteries were usually 6 to 8 guns strong though Russian foot batteries regularly had upto 12 guns. There are three types of foot batteries:

**Light** foot artillery batteries are those batteries with the majority of their guns being **less than 6 pounds**. Light guns were often found as individual regimental guns, however, such individual regimental guns are not considered within these guidelines. It is assumed that the effect of any such individual regimental pieces is built into the regiment's overall firepower.

**Medium** foot artillery batteries are those batteries with the majority of their guns being **from 6 to 9 pounds**. Most artillery batteries in this period fall in this medium category.

**Heavy** foot artillery batteries are those batteries with the majority of their guns being **greater than 9 pounds**. Heavy artillery batteries were usually found as corps reserve batteries although heavy batteries were occasionally deployed at division level or even at brigade level on rare occasions.

**HORSE ARTILLERY:**

```

-----
|LT | A Light Horse      |MED| A Medium Horse
|HRS| Artillery Battery |HRS| Artillery Battery
-----

```

Horse artillery batteries (units) were especially trained and equipped to accompany cavalry units and so they can be deployed with cavalry brigades. Horse artillery batteries can also be deployed with infantry brigades and light brigades. Horse batteries were usually 6 to 8 guns strong though occasional Russian horse batteries had upto 12 guns. Horse artillery batteries were sometimes light, often medium, but never heavy. There are two types of horse batteries:

**Light** horse artillery batteries are those horse batteries with the majority of their guns being **less than 6 pounds**.

**Medium** horse artillery batteries are those horse batteries with the majority of their guns being **from 6 to 9 pounds**. Most horse artillery batteries in this period fall in this medium category.

**DIVISION ARTILLERY:**

```

-----
|DIV| Division
|ART| Artillery
-----

```

Artillery batteries were often attached as a kind of reserve at division level. Cavalry divisions did not have division level artillery batteries. Any such *Division Artillery* batteries *must* be deployed before the game in one of two ways thus:

1. Individual division artillery batteries can be deployed anywhere throughout their own *division* at brigade level as additional *infantry* brigade batteries. However, no infantry brigade can have more than one additional division battery attached, or,
2. Division artillery batteries can be deployed and operated within their own *division* as an independent type of "brigade" consisting of just artillery batteries.

**CORPS RESERVE ARTILLERY:**

```

-----
|RES| Corps Reserve
|ART| Artillery
-----

```

It was not unusual for a corps to have some *Corps Reserve Artillery* batteries (units). Any such corps reserve artillery batteries *must* be deployed in one of three ways thus:

1. Individual corps reserve artillery batteries can be deployed anywhere throughout the *corps* at brigade level as additional *infantry* brigade batteries. However, no infantry brigade can have more than one additional corps reserve battery attached, or,
2. Individual corps reserve *horse* artillery batteries can be deployed anywhere throughout the *corps* at brigade level as additional cavalry brigade batteries. However, no cavalry brigade can have more than one additional corps reserve horse artillery battery attached, or,
3. Individual corps reserve artillery batteries can be deployed with a *division* artillery "brigade" as additional *division* artillery batteries. This is how grand batteries can be formed.

**Note on Russian artillery batteries:**

Under the club's house rules, a single base represents two guns. Thus, since most nationalities fielded batteries of between six to eight guns an artillery battery (unit) is normally represented by three or four bases.

Now, as we all know, the Russians regularly fielded artillery batteries that were twelve guns strong. However, the consensus of opinion seems to be that any advantages that Russian batteries had in numbers and quality of their guns was lost due to poor training, dreadful powder and fuses, and by a general lack of manpower and ammunition within the batteries.

Therefore, to represent this, twelve gun Russian batteries are still represented by *six bases* but the battery *can never fire all of them* in the same game turn. For example, a six gun Russian battery could only fire five stands; a three gun Russian battery could only fire two stands, etc.

#### ATTACHED RESERVES:

-----  
 |**ATT**| Attached  
 |**RES**| Reserve  
 -----

A corps may have had an *Attached Reserve* which was drawn from the nation's reserve which was then attached to the corps. Any such attached reserve was usually small – probably just a brigade or two.

An Attached Reserve does not act independently. The brigades in an attached reserve must be attached as brigades to an *Infantry Division* before the start of a game. Any artillery involved remains with its brigade.

### Commander Ratings

Under the club rules, players determine the command rating of their corps commander (if they have one) and each of their division commanders separately using the table below. Thus, before the start of the game, throw 2D6 for each of your commanders the result being thus:

Command Rating	Austria	Britain	France	Ottoman	Others
10	None	12	12	None	None
9	None	9 to 11	7 to 11	None	None
8	12	4 to 8	4 to 6	None	12
7	5 to 11	3	3	11 or 12	5 to 11
6	3 or 4	2	2	4 to 10	3 or 4
5	2	None	None	2 or 3	2

Command Rating	Prussia Pre-1812	Prussia 1812 on	Russia	Spain and Portugal	Sweden
10	None	None	None	None	None
9	None	9 to 12	12	None	None
8	12	4 to 8	10 or 11	12	11 or 12
7	5 to 11	3	4 to 9	7 to 11	3 to 10
6	3 or 4	2	3	3 to 6	2
5	2	None	2	2	None

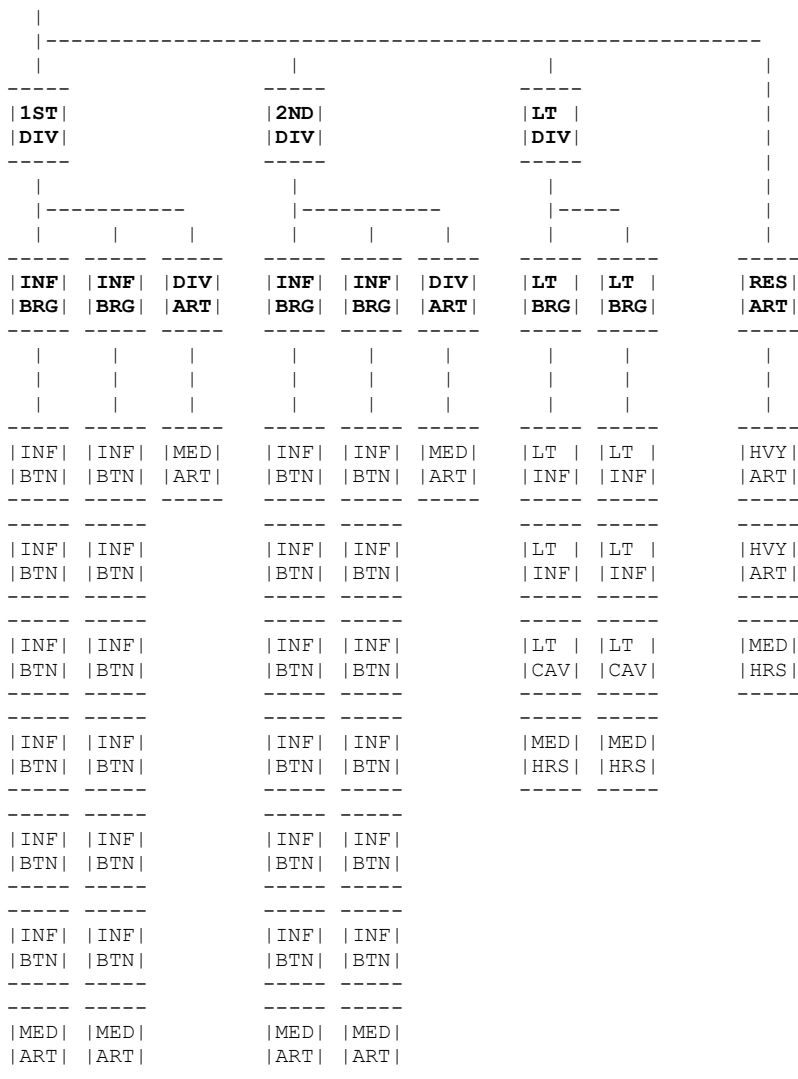
Napoleon and Wellington always have a command rating of 10.

### Finally

Remember, these guidelines are just that – *guidelines!* If you don't like something in them then don't use it. We recommend you do some research and use historic formations to refight historic actions.

Ok; now onto the lists....

-----  
 | THE REGULATION AUSTRIAN CORPS | Regulation Corps  
 -----



**Summary:**  
 28 Infantry Battalions  
 2 Cavalry Regiments  
 11 Artillery Batteries

**THE REGULATION AUSTRIAN CORPS:**

**Units: 1<sup>st</sup> Infantry Division**

- Infantry Brigade:
- 1) Line Infantry                      Large Infantry
  - 2) Line Infantry                      Large Infantry
  - 3) Line Infantry                      Large Infantry
  - 4) Line Infantry                      Large Infantry
  - 5) Line Infantry                      Large Infantry
  - 6) Line Infantry                      Large Infantry
  - 7) Foot Artillery                      Medium Foot Artillery, 4 bases
- Infantry Brigade:
- 8) Line Infantry                      Large Infantry
  - 9) Line Infantry                      Large Infantry
  - 10) Line Infantry                      Large Infantry
  - 11) Line Infantry                      Large Infantry
  - 12) Line Infantry                      Large Infantry
  - 13) Line Infantry                      Large Infantry
  - 14) Foot Artillery                      Medium Foot Artillery, 4 Bases
- Division Artillery:
- 15) Foot Artillery                      Medium Foot Artillery, 3 Bases

**Units: 2<sup>nd</sup> Infantry Division**

## Infantry Brigade:

- |                   |                                |
|-------------------|--------------------------------|
| 1) Line Infantry  | Large Infantry                 |
| 2) Line Infantry  | Large Infantry                 |
| 3) Line Infantry  | Large Infantry                 |
| 4) Line Infantry  | Large Infantry                 |
| 5) Line Infantry  | Large Infantry                 |
| 6) Line Infantry  | Large Infantry                 |
| 7) Foot Artillery | Medium Foot Artillery, 4 bases |

## Infantry Brigade:

- |                    |                                |
|--------------------|--------------------------------|
| 8) Line Infantry   | Large Infantry                 |
| 9) Line Infantry   | Large Infantry                 |
| 10) Line Infantry  | Large Infantry                 |
| 11) Line Infantry  | Large Infantry                 |
| 12) Line Infantry  | Large Infantry                 |
| 13) Line Infantry  | Large Infantry                 |
| 14) Foot Artillery | Medium Foot Artillery, 4 Bases |

## Division Artillery:

- |                    |                                |
|--------------------|--------------------------------|
| 15) Foot Artillery | Medium Foot Artillery, 3 Bases |
|--------------------|--------------------------------|

**Units: Light Division**

## Light Brigade:

- |                    |  |
|--------------------|--|
| 1) Jager           | Standard Light Infantry, Skirmishers, Rifle armed, Sharpshooters |
| 2) Grenze          | Large Light Infantry, Skirmishers                                |
| 3) Hussars         | Large Light Cavalry, Marauders                                   |
| 4) Horse Artillery | Medium Horse Artillery, 3 Bases                                  |

## Light Brigade:

- |                    |                                   |
|--------------------|-----------------------------------|
| 5) Grenze          | Large Light Infantry, Skirmishers |
| 6) Grenze          | Large Light Infantry, Skirmishers |
| 7) Hussars         | Large Light Cavalry, Marauders    |
| 8) Horse Artillery | Medium Horse Artillery, 3 Bases   |

**Units: Corps Reserve Artillery**

- |                    |                                 |
|--------------------|---------------------------------|
| 1) Foot Artillery  | Heavy Foot Artillery, 3 Bases   |
| 2) Foot Artillery  | Heavy Foot Artillery, 3 Bases   |
| 3) Horse Artillery | Medium Horse Artillery, 3 Bases |

-----  
 | AUSTRIAN 6th CORPS | Historic Corps  
ECKMUHL 20<sup>th</sup> MARCH 1809

1ST DIV			2ND DIV			LT DIV		
INF	INF	DIV	INF	INF	DIV	LT	LT	RES
BRG	BRG	ART	BRG	BRG	ART	BRG	BRG	ART
INF	INF	MED	INF	INF	MED	LT	LT	HVY
BTN	BTN	ART	BTN	BTN	ART	INF	INF	ART
INF	INF		INF	INF		LT	LT	HVY
BTN	BTN		BTN	BTN		INF	INF	ART
INF	INF		INF	INF		LT	LT	HVY
BTN	BTN		BTN	BTN		ART	ART	ART
INF	INF		INF	INF		INF	LT	MED
BTN	BTN		BTN	BTN		BTN	CAV	HRS
INF	INF		INF	INF		INF	LT	
BTN	BTN		BTN	BTN		BTN	CAV	
INF	INF		INF	INF		INF	MED	
BTN	BTN		BTN	BTN		BTN	HRS	
						LT		
						CAV		
						MED		
						HRS		

### Summary:

31 Infantry Battalions  
 3 Cavalry Regiments  
 14 Artillery Batteries

### THE AUSTRIAN 6<sup>th</sup> CORPS: 20<sup>th</sup> MARCH 1809: Johann Von Hiller

#### Units: 1<sup>st</sup> Infantry Division: Freidrich Von Kottulinsky

Infantry Brigade: Otto Graf Hohenfeld

- |                   |      |                                |
|-------------------|------|--------------------------------|
| 1) Line Infantry  | 14/1 | Large Infantry                 |
| 2) Line Infantry  | 14/2 | Large Infantry                 |
| 3) Line Infantry  | 14/3 | Large Infantry                 |
| 4) Line Infantry  | 59/1 | Large Infantry                 |
| 5) Line Infantry  | 59/2 | Large Infantry                 |
| 6) Line Infantry  | 59/3 | Large Infantry                 |
| 7) Foot Artillery |      | Medium Foot Artillery, 4 Bases |

Infantry Brigade: Nikolaus Weissenwolff

- |                    |      |                                |
|--------------------|------|--------------------------------|
| 8) Line Infantry   | 4/1  | Large Infantry                 |
| 9) Line Infantry   | 4/2  | Large Infantry                 |
| 10) Line Infantry  | 4/3  | Large Infantry                 |
| 11) Line Infantry  | 49/1 | Large Infantry                 |
| 12) Line Infantry  | 49/2 | Large Infantry                 |
| 13) Line Infantry  | 49/3 | Large Infantry                 |
| 14) Foot Artillery |      | Medium Foot Artillery, 4 Bases |

## Division Artillery:

15) Foot Artillery Medium Foot Artillery, 3 Bases

**Units: 2<sup>nd</sup> Infantry Division: Franz Von Jellacic**

## Infantry Brigade: Josef Von Hoffeneck

1) Line Infantry	31/1	Large Infantry
2) Line Infantry	31/2	Large Infantry
3) Line Infantry	31/3	Large Infantry
4) Line Infantry	51/1	Large Infantry
5) Line Infantry	51/2	Large Infantry
6) Line Infantry	51/3	Large Infantry
7) Foot Artillery		Medium Foot Artillery, 4 Bases

## Infantry Brigade: Konstantin Hoffmeister

8) Line Infantry	32/1	Large Infantry
9) Line Infantry	32/2	Large Infantry
10) Line Infantry	32/3	Large Infantry
11) Line Infantry	45/1	Large Infantry
12) Line Infantry	45/2	Large Infantry
13) Line Infantry	45/3	Large Infantry
14) Foot Artillery		Medium Foot Artillery, 4 bases

## Division Artillery:

15) Foot Artillery Medium Foot Artillery, 3 Bases

**Units: Light Division: Karl Von Vincent**

## Light Brigade: Karl Von Provencheres

1) Grenze	5/1	Large Light Infantry, Skirmish
2) Grenze	5/2	Large Light Infantry, Skirmish
3) Grenze Foot Artillery		Light Foot Artillery, 4 Bases
4) Vienna Freicorps	4 <sup>th</sup>	Standard Infantry
5) Vienna Freicorps	5 <sup>th</sup>	Standard Infantry
6) Vienna Freicorps	6 <sup>th</sup>	Standard Infantry
7) O'Reilly Chevaulegers		Standard Light Cavalry, Marauders
8) Horse Artillery		Medium Horse Artillery, 3 Bases

## Light Brigade: Armand Von Nordmann

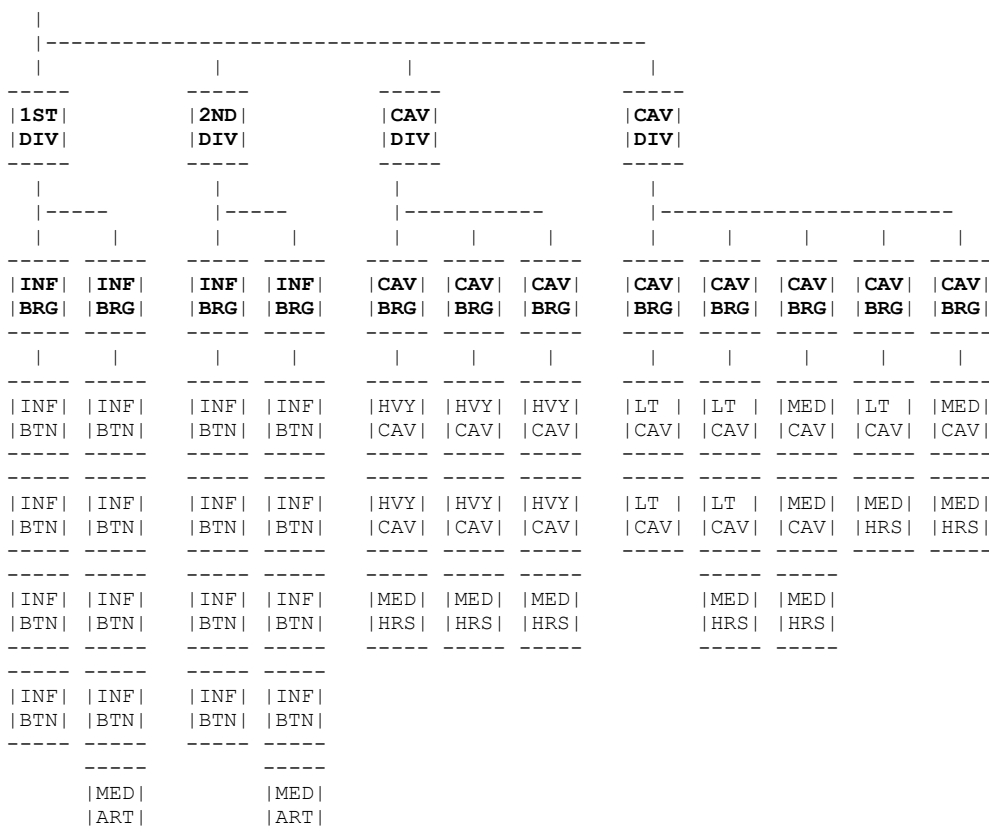
9) Grenze	6/1	Large Light Infantry, Skirmish
10) Grenze	6/2	Large Light Infantry, Skirmish
11) Grenze Foot Artillery		Light Foot Artillery, 4 Bases
12) Rosenberg Chevaulegers		Standard Light Cavalry, Marauders
13) Liechtenstein Hussars		Standard Light Cavalry, Marauders
14) Horse Artillery		Medium Horse Artillery, 3 Bases

**Units: Corps Reserve Artillery**

1) Foot Artillery		Heavy Foot Artillery, 3 Bases
2) Foot Artillery		Heavy Foot Artillery, 3 Bases
3) Foot Artillery		Heavy Foot Artillery, 3 Bases
4) Horse Artillery		Medium Horse Artillery, 3 bases



-----  
 | AUSTRIAN RESERVE CORPS | Historic Corps  
19<sup>th</sup> MAY 1809



**Summary:**

- 16 Infantry Battalions
- 14 Cavalry Regiments
- 9 Artillery Batteries

**THE AUSTRIAN RESERVE CORPS: 19<sup>th</sup> MAY 1809: Johannes Furst Liechtenstein**

**Units: 1<sup>st</sup> Infantry Division: d'Aspre**

Infantry Brigade: Merville

- 1) Grenadiers                      Standard Infantry, Reliable, Elite 5+
- 2) Grenadiers                      Standard Infantry, Reliable, Elite 5+
- 3) Grenadiers                      Standard Infantry, Reliable, Elite 5+
- 4) Grenadiers                      Standard Infantry, Reliable, Elite 5+

Infantry Brigade: Hammer

- 5) Grenadiers                      Standard Infantry, Reliable, Elite 5+
- 6) Grenadiers                      Standard Infantry, Reliable, Elite 5+
- 7) Grenadiers                      Standard Infantry, Reliable, Elite 5+
- 8) Grenadiers                      Standard Infantry, Reliable, Elite 5+
- 9) Foot Artillery                  Medium Foot Artillery, 4 Bases

**Units: 2<sup>nd</sup> Infantry Division: Prochaszka**

Infantry Brigade: Von Melgum

- 1) Grenadiers                      Standard Infantry, Reliable, Elite 5+
- 2) Grenadiers                      Standard Infantry, Reliable, Elite 5+
- 3) Grenadiers                      Standard Infantry, Reliable, Elite 5+
- 4) Grenadiers                      Standard Infantry, Reliable, Elite 5+

Infantry Brigade: Steyer

- 5) Grenadiers                      Standard Infantry, Reliable, Elite 5+
- 6) Grenadiers                      Standard Infantry, Reliable, Elite 5+
- 7) Grenadiers                      Standard Infantry, Reliable, Elite 5+
- 8) Grenadiers                      Standard Infantry, Reliable, Elite 5+
- 9) Foot Artillery                  Medium Foot Artillery, 4 Bases

**Units: Heavy Cavalry Division: Hessen-Homberg**

## Cavalry Brigade: Kroyher

- |                    |   |
|--------------------|---|
| 1) Cuirassiers     | Standard Cavalry, Reliable, Heavy Cavalry +D3 |
| 2) Cuirassiers     | Standard Cavalry, Reliable, Heavy Cavalry +D3 |
| 3) Horse Artillery | Medium Horse Artillery, 3 Bases               |

## Cavalry Brigade: Lederer

- |                    |   |
|--------------------|---|
| 4) Cuirassiers     | Standard Cavalry, Reliable, Heavy Cavalry +D3 |
| 5) Cuirassiers     | Standard Cavalry, Reliable, Heavy Cavalry +D3 |
| 6) Horse Artillery | Medium Horse Artillery, 3 Bases               |

## Cavalry Brigade: Seigenthal

- |                    |   |
|--------------------|---|
| 7) Cuirassiers     | Standard Cavalry, Reliable, Heavy Cavalry +D3 |
| 8) Cuirassiers     | Standard Cavalry, Reliable, Heavy Cavalry +D3 |
| 9) Horse Artillery | Medium Horse Artillery, 3 Bases               |

**Units: Light Cavalry Division: Kienmayer**

## Cavalry Brigade: Vecsey

- |                |  |
|----------------|--|
| 1) Chevauleger | Large Light Cavalry, Reliable, Marauders |
| 2) Chevauleger | Large Light Cavalry, Reliable, Marauders |

## Cavalry Brigade: Provencheres

- |                    |  |
|--------------------|--|
| 3) Chevauleger     | Large Light Cavalry, Reliable, Marauders |
| 4) Chevauleger     | Large Light Cavalry, Reliable, Marauders |
| 5) Horse Artillery | Medium Horse Artillery, 3 Bases          |

## Cavalry Brigade: Rottermund

- |                    |   |
|--------------------|---|
| 6) Dragoons        | Standard Medium Cavalry, Heavy Cavalry +1 |
| 7) Dragoons        | Standard Medium Cavalry, Heavy Cavalry +1 |
| 8) Horse Artillery | Medium Horse Artillery, 3 Bases           |

## Cavalry Brigade: Warten-Sleben

- |                     |  |
|---------------------|--|
| 9) Hussars          | Large Light Cavalry, Reliable, Marauders |
| 10) Horse Artillery | Medium Horse Artillery, 3 Bases          |

## Cavalry Brigade: Clary

- |                     |   |
|---------------------|---|
| 11) Dragoons        | Standard Medium Cavalry, Heavy Cavalry +1 |
| 12) Horse Artillery | Medium Horse Artillery, 3 Bases           |

-----  
 | THE AUSTRO-RUSSIAN IV COLUMN | Historic Austro-Russian Division  
AUSTERLITZ, 2<sup>nd</sup> December 1805

|  
 -----  
 | INF |  
DIV

INF	INF	INF	INF	INF
BRG	BRG	BRG	BRG	BRG

INF	INF	INF	INF	INF
BTN	BTN	BTN	BTN	BTN

INF	INF	INF	INF	INF
BTN	BTN	BTN	BTN	BTN

INF	INF	INF	INF	INF
BTN	BTN	BTN	BTN	BTN

MED	INF	INF	INF	INF
CAV	BTN	BTN	BTN	BTN

MED	INF	INF	INF
ART	BTN	BTN	BTN

MED	MED	INF	INF
ART	ART	BTN	BTN

MED	INF	INF
ART	BTN	BTN

INF	MED
INF	ART

MED	MED
ART	ART

MED
ART

**Summary:**

- 27 Infantry Battalions
- 1 Cavalry Regiment
- 8 Artillery Batteries

**THE AUSTRO-RUSSIAN IV COLUMN: 2<sup>nd</sup> DECEMBER 1805:**

**Units: Infantry Division: Kolwrat**

Russian Infantry Brigade: Montakin

- |                                 |  |
|---------------------------------|--|
| 1) Musketeers                   | Small Infantry                         |
| 2) Musketeers                   | Small Infantry                         |
| 3) Musketeers                   | Small Infantry                         |
| 4) Attached Dragoons (Austrian) | Small Medium Cavalry, Heavy Cavalry +1 |

Russian Infantry Brigade: Berg

- |                   |                                       |
|-------------------|---------------------------------------|
| 5) Grenadiers     | Standard Infantry, Reliable, Elite 5+ |
| 6) Grenadiers     | Standard Infantry, Reliable, Elite 5+ |
| 7) Grenadiers     | Standard Infantry, Reliable, Elite 5+ |
| 8) Musketeers     | Small Infantry                        |
| 9) Foot Artillery | Heavy Foot Artillery, 6 Bases         |

## Russian Infantry Brigade: Repninsky

- |                    |                                |
|--------------------|--------------------------------|
| 10) Musketeers     | Small Infantry                 |
| 11) Musketeers     | Small Infantry                 |
| 12) Musketeers     | Small Infantry                 |
| 13) Musketeers     | Small Infantry                 |
| 14) Musketeers     | Small Infantry                 |
| 15) Foot Artillery | Medium Foot Artillery, 6 Bases |
| 16) Foot Artillery | Medium Foot Artillery, 6 Bases |

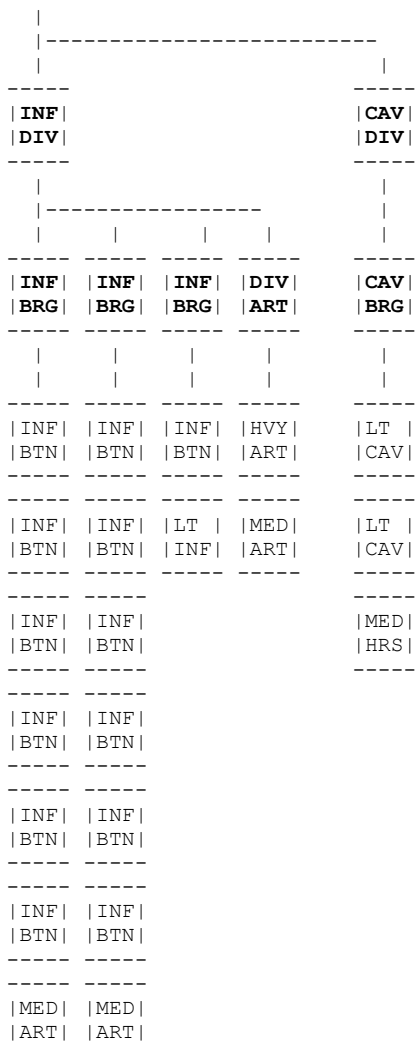
## Austrian Infantry Brigade: Rottermund

- |                    |                                |
|--------------------|--------------------------------|
| 17) Line Infantry  | Small Infantry                 |
| 18) Line Infantry  | Small Infantry                 |
| 19) Line Infantry  | Standard Infantry              |
| 20) Line Infantry  | Standard Infantry              |
| 21) Line Infantry  | Standard Infantry              |
| 22) Line Infantry  | Standard Infantry              |
| 23) Line Infantry  | Standard Infantry              |
| 24) Line Infantry  | Standard Infantry              |
| 25) Foot Artillery | Medium Foot Artillery, 4 Bases |
| 26) Foot Artillery | Medium Foot Artillery, 4 Bases |
| 27) Foot Artillery | Medium Foot Artillery, 4 Bases |

## Austrian Infantry Brigade: Jurczik

- |                    |                                |
|--------------------|--------------------------------|
| 28) Line Infantry  | Small Infantry                 |
| 29) Line Infantry  | Small Infantry                 |
| 30) Line Infantry  | Small Infantry                 |
| 31) Line Infantry  | Small Infantry                 |
| 32) Line Infantry  | Standard Infantry              |
| 33) Line Infantry  | Standard Infantry              |
| 34) Line Infantry  | Standard Infantry              |
| 35) Foot Artillery | Medium Foot Artillery, 4 Bases |
| 36) Foot Artillery | Medium Foot Artillery, 4 Bases |

-----  
 | THE ARCHDUCHY OF BADEN c1809 | Hypothetical Corps  
 -----



**Summary:**  
 14 Infantry Battalions  
 2 Cavalry Regiments  
 5 Artillery Batteries

**THE ARCHDUCHY OF BADEN c1809:**

**Units: Infantry Division**

Infantry Brigade:

- 1) Musketeers                      Small Infantry
- 2) Musketeers                      Small Infantry
- 3) Musketeers                      Small Infantry
- 4) Musketeers                      Small Infantry
- 5) Musketeers                      Small Infantry
- 6) Musketeers                      Small Infantry
- 7) Foot Artillery                    Medium Foot Artillery, 4 Bases

Infantry Brigade:

- 8) Musketeers                      Small Infantry
- 9) Musketeers                      Small Infantry
- 10) Musketeers                      Small Infantry
- 11) Musketeers                      Small Infantry
- 12) Musketeers                      Small Infantry
- 13) Musketeers                      Small Infantry
- 14) Foot Artillery                    Medium Foot Artillery, 4 Bases

Guard Infantry Brigade:

- 15) Light Infantry                    Small Light Infantry, Skirmish, Rifle armed, Sharpshooters
- 16) Guards                            Small Infantry, Reliable

Division Artillery:

17) Foot Artillery

18) Foot Artillery

Heavy Foot Artillery, 3 Bases

Medium Foot Artillery, 4 Bases

**Units: Cavalry Division**

Cavalry Brigade:

1) Light Dragoons

2) Hussars

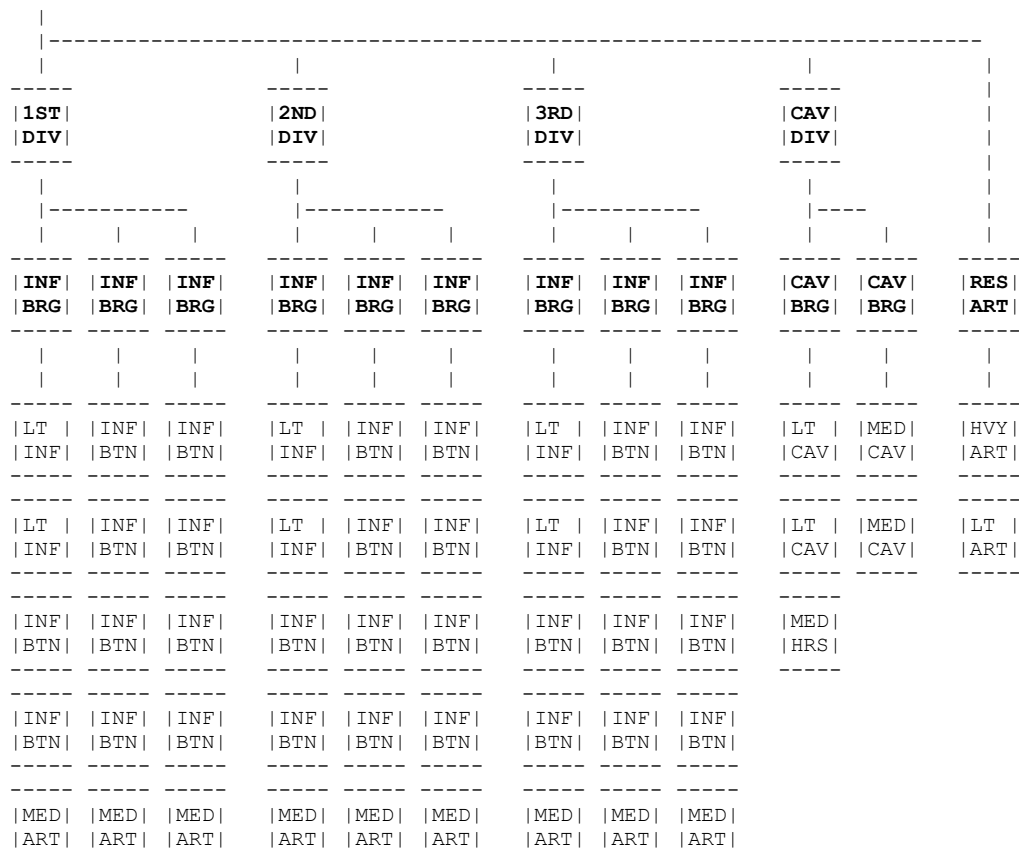
3) Horse Artillery

Small Light Cavalry, Reliable, Marauders

Small Light Cavalry, Reliable, Marauders

Medium Horse Artillery, 3 Bases

-----  
 | THE KINGDOM OF BAVARIA c1805 | Hypothetical Corps  
 -----



**Summary:**

- 36 Battalions
- 4 Cavalry Regiments
- 11 Artillery Batteries

**THE KINGDOM OF BAVARIA c1805:**

**Units: 1<sup>st</sup> Infantry Division**

- Infantry Brigade:
- 1) Jager Standard Light Infantry, Skirmishers
  - 2) Jager Standard Light Infantry, Skirmishers
  - 3) Line Infantry Standard Infantry
  - 4) Line Infantry Standard Infantry
  - 5) Foot Artillery Medium Foot Artillery, 3 Bases
- Infantry Brigade:
- 6) Line Infantry Standard Infantry
  - 7) Line Infantry Standard Infantry
  - 8) Line Infantry Standard Infantry
  - 9) Line Infantry Standard Infantry
  - 10) Foot Artillery Medium Foot Artillery, 3 Bases
- Infantry Brigade:
- 11) Line Infantry Standard Infantry
  - 12) Line Infantry Standard Infantry
  - 13) Line Infantry Standard Infantry
  - 14) Line Infantry Standard Infantry
  - 15) Foot Artillery Medium Foot Artillery, 3 Bases

**Units: 2<sup>nd</sup> Infantry Division**

- Infantry Brigade:
- 1) Jager Standard Light Infantry, Skirmishers
  - 2) Jager Standard Light Infantry, Skirmishers
  - 3) Line Infantry Standard Infantry
  - 4) Line Infantry Standard Infantry
  - 5) Foot Artillery Medium Foot Artillery, 3 Bases

## Infantry Brigade:

- |                    |                                |
|--------------------|--------------------------------|
| 6) Line Infantry   | Standard Infantry              |
| 7) Line Infantry   | Standard Infantry              |
| 8) Line Infantry   | Standard Infantry              |
| 9) Line Infantry   | Standard Infantry              |
| 10) Foot Artillery | Medium Foot Artillery, 3 Bases |

## Infantry Brigade:

- |                    |                                |
|--------------------|--------------------------------|
| 11) Line Infantry  | Standard Infantry              |
| 12) Line Infantry  | Standard Infantry              |
| 13) Line Infantry  | Standard Infantry              |
| 14) Line Infantry  | Standard Infantry              |
| 15) Foot Artillery | Medium Foot Artillery, 3 Bases |

**Units: 3<sup>rd</sup> Infantry Division**

## Infantry Brigade:

- |                   |  |
|-------------------|--|
| 1) Jager          | Standard Light Infantry, Skirmishers, Rifle armed, Sharpshooters |
| 2) Jager          | Standard Light Infantry, Skirmishers                             |
| 3) Line Infantry  | Standard Infantry  |
| 4) Line Infantry  | Standard Infantry  |
| 5) Foot Artillery | Medium Foot Artillery, 3 Bases                                   |

## Infantry Brigade:

- |                    |                                |
|--------------------|--------------------------------|
| 6) Line Infantry   | Standard Infantry              |
| 7) Line Infantry   | Standard Infantry              |
| 8) Line Infantry   | Standard Infantry              |
| 9) Line Infantry   | Standard Infantry              |
| 10) Foot Artillery | Medium Foot Artillery, 3 Bases |

## Infantry Brigade:

- |                    |                                |
|--------------------|--------------------------------|
| 11) Line Infantry  | Standard Infantry              |
| 12) Line Infantry  | Standard Infantry              |
| 13) Landwehr       | Standard Infantry, Unreliable  |
| 14) Landwehr       | Standard Infantry, Unreliable  |
| 15) Foot Artillery | Medium Foot Artillery, 3 Bases |

**Units: Cavalry Division**

## Cavalry Brigade:

- |                    |                                 |
|--------------------|---------------------------------|
| 1) Chevauleger     | Small Light Cavalry, Marauders  |
| 2) Chevauleger     | Small Light Cavalry, Marauders  |
| 3) Horse Artillery | Medium Horse Artillery, 3 Bases |

## Cavalry Brigade:

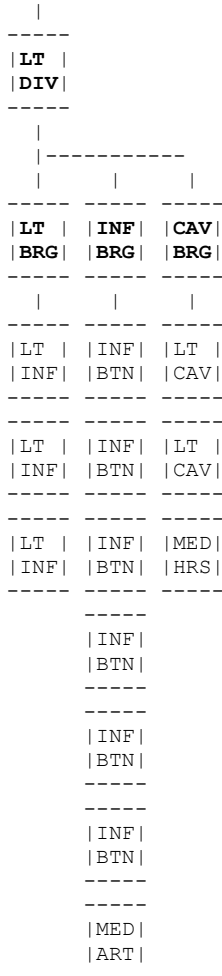
- |             |  |
|-------------|--|
| 4) Dragoons | Small Medium Cavalry, Heavy Cavalry +1 |
| 5) Dragoons | Small Medium Cavalry, Heavy Cavalry +1 |

**Units: Corps Reserve Artillery**

- |                   |                               |
|-------------------|-------------------------------|
| 1) Foot Artillery | Heavy Foot Artillery, 3 Bases |
| 2) Foot Artillery | Heavy Foot Artillery, 3 Bases |



-----  
 | THE ARCHDUCHY OF KLEVE-BERG c1808 | Hypothetical Light Division  
 -----



**Summary:**

- 9 Battalions
- 2 Cavalry Regiments
- 2 Artillery Batteries

**THE ARCHDUCHY OF KLEVE-BERG c1808:**

**Units: Light Division**

- |                     |  |
|---------------------|--|
| Infantry Brigade:   |  |
| 1) Light Infantry   | Standard Light Infantry, Skirmishers   |
| 2) Light Infantry   | Standard Light Infantry, Skirmishers   |
| 3) Light Infantry   | Standard Light Infantry, Skirmishers   |
|                     |  |
| Infantry Brigade:   |  |
| 4) Line Infantry    | Standard Infantry                      |
| 5) Line Infantry    | Standard Infantry                      |
| 6) Line Infantry    | Standard Infantry                      |
| 7) Line Infantry    | Standard Infantry                      |
| 8) Line Infantry    | Standard Infantry                      |
| 9) Line Infantry    | Standard Infantry                      |
| 10) Foot Artillery  | Medium Foot Artillery, 4 Bases         |
|                     |  |
| Cavalry Brigade:    |  |
| 11) Chevauleger     | Small Light Cavalry, Reliable          |
| 12) Uhlan           | Small Light Cavalry, Lancers, Reliable |
| 13) Horse Artillery | Medium Horse Artillery, 3 bases        |

-----  
 | THE REGULATION BRITISH CORPS | Hypothetical Regulation Corps, see the notes.  
 -----

1ST				2ND				ATT		
DIV				DIV				DIV		
INF     INF     INF     CAV				INF     INF     INF     CAV				INF		
BRG     BRG     BRG     BRG				BRG     BRG     BRG     BRG				BRG		RES
INF     INF     LT     MED				INF     INF     LT     LT				INF		MED
BTN     BTN     INF     CAV				BTN     BTN     INF     CAV				BTN		ART
INF     INF     LT     LT				INF     INF     LT     LT				INF		MED
BTN     BTN     INF     CAV				BTN     BTN     INF     CAV				BTN		ART
INF     INF     LT     LT				INF     INF     INF     LT				INF		MED
BTN     BTN     INF     CAV				BTN     BTN     BTN     CAV				BTN		ART
INF     INF     LT     MED				INF     INF     INF				INF		MED
BTN     INF     INF     HRS				BTN     BTN     BTN				BTN		ART
INF     INF     LT				INF     INF     INF				INF		MED
BTN     INF     INF				BTN     BTN     BTN				BTN		ART
INF     INF     LT				INF     INF     INF				INF		MED
BTN     INF     INF				BTN     BTN     BTN				BTN		ART
										MED
										ART

**Total:**  
 42 Battalions  
 6 Cavalry Regiments  
 7 Artillery Batteries

**THE REGULATION BRITISH CORPS:**

**Units: 1<sup>st</sup> Division**

- Infantry Brigade:
- 1) Line Infantry                      Standard Infantry, Elite 6+
  - 2) Line Infantry                      Standard Infantry, Elite 6+
  - 3) Line Infantry                      Standard Infantry, Elite 6+
  - 4) Highlanders                      Standard Infantry, Reliable, Elite 4+
  - 5) Highlanders                      Standard Infantry, Reliable, Elite 4+
  - 6) Highlanders                      Standard Infantry, Reliable, Elite 4+

- Infantry Brigade:
- 7) Line Infantry                      Standard Infantry, Elite 6+
  - 8) Line Infantry                      Standard Infantry, Elite 6+
  - 9) Line Infantry                      Standard Infantry, Elite 6+
  - 10) Line Infantry                      Standard Infantry, Elite 6+
  - 11) Line Infantry                      Standard Infantry, Elite 6+
  - 12) Line Infantry                      Standard Infantry, Elite 6+

- Infantry Brigade:
- 13) Light Infantry                      Standard Infantry, Skirmishers
  - 14) Light Infantry                      Standard Infantry, Skirmishers
  - 15) Light Infantry                      Standard Infantry, Skirmishers
  - 16) Light Infantry                      Standard Infantry, Skirmishers
  - 17) Light Infantry                      Standard Infantry, Skirmishers
  - 18) Light Infantry                      Standard Infantry, Skirmishers

**Cavalry Brigade:**

- |                                   |  |
|-----------------------------------|--|
| 19) Heavy Dragoons                | Small Medium Cavalry, Reliable, Heavy Cavalry +1 |
| 20) Light Dragoons                | Small Light Cavalry, Reliable, Marauders         |
| 21) Hussars                       | Small Light Cavalry, Reliable, Marauders         |
| 22) British Royal Horse Artillery | Medium Horse Artillery, 3 bases, Reliable        |

**Units: 2<sup>nd</sup> Division****Infantry Brigade:**

- |                  |                  |  |
|------------------|------------------|--|
| 1) Line Infantry | 43 <sup>rd</sup> | Standard Infantry, Skirmishers, Elite 5+ |
| 2) Line Infantry | 52 <sup>nd</sup> | Standard Infantry, Skirmishers, Elite 5+ |
| 3) Line Infantry | 95 <sup>th</sup> | Standard Infantry, Skirmishers, Elite 5+ |
| 4) Line Infantry |                  | Standard Infantry, Elite 6+              |
| 5) Line Infantry |                  | Standard Infantry, Elite 6+              |
| 6) Line Infantry |                  | Standard Infantry, Elite 6+              |

**Infantry Brigade:**

- |                  |                             |
|------------------|-----------------------------|
| 7) Line Infantry | Standard Infantry, Elite 6+ |
| 8) Line Infantry | Standard Infantry, Elite 6+ |
| 9) Line Infantry | Standard Infantry, Elite 6+ |
| 10) Highlanders  | Standard Infantry, Elite 6+ |
| 11) Highlanders  | Standard Infantry, Elite 6+ |
| 12) Highlanders  | Standard Infantry, Elite 6+ |

**KGL Infantry Brigade:**

- |                        |                                      |
|------------------------|--------------------------------------|
| 13) KGL Light Infantry | Standard Light Infantry, Skirmishers |
| 14) KGL Light Infantry | Standard Light Infantry, Skirmishers |
| 15) KGL Infantry       | Standard Infantry, Elite 6+          |
| 16) KGL Infantry       | Standard Infantry, Elite 6+          |
| 17) KGL Infantry       | Standard Infantry, Elite 6+          |
| 18) KGL Infantry       | Standard Infantry, Elite 6+          |

**Cavalry Brigade:**

- |                        |  |
|------------------------|--|
| 19) Light Dragoons     | Small Light Cavalry, Reliable, Marauders |
| 20) Hussars            | Small Light Cavalry, Reliable, Marauders |
| 21) KGL Light Dragoons | Small Light Cavalry, Reliable, Marauders |

**Units: Attached Guard Division****Guard Infantry Brigade:**

- |                            |  |
|----------------------------|--|
| 1) Fusiliers               | Standard Infantry, Elite 6+  |
| 2) Fusiliers               | Standard Infantry, Elite 6+  |
| 3) Fusiliers               | Standard Infantry, Elite 6+  |
| 4) 95 <sup>th</sup> Rifles | Standard Light Infantry, Skirmishers, Rifle armed, Sharpshooters, Elite 3+ |
| 5) Guard Infantry          | Large Infantry, Skirmishers, Reliable, Valiant, Elite 2+                   |
| 6) Guard Infantry          | Large Infantry, Skirmishers, Reliable, Valiant, Elite 2+                   |

**Units: Corps Reserve Artillery**

- |                           |  |
|---------------------------|--|
| 1) British Foot Artillery | Medium Foot Artillery, 3 Bases, Reliable |
| 2) British Foot Artillery | Medium Foot Artillery, 3 Bases, Reliable |
| 3) British Foot Artillery | Medium Foot Artillery, 3 Bases, Reliable |
| 4) British Foot Artillery | Medium Foot Artillery, 3 Bases, Reliable |
| 5) British Foot Artillery | Medium Foot Artillery, 3 Bases, Reliable |
| 6) British Foot Artillery | Medium Foot Artillery, 3 Bases, Reliable |
| 7) KGL Foot Artillery     | Medium Foot Artillery, 3 Bases, Reliable |

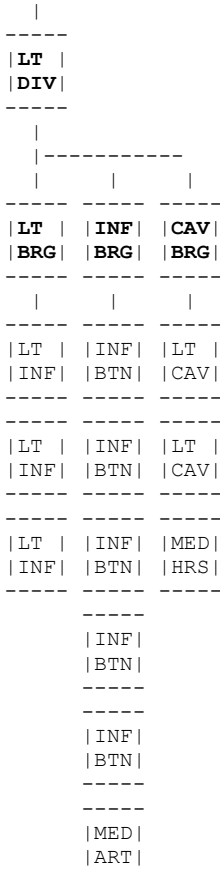
**NOTES:**

The British really didn't have a formal organisation above Division level.

Each Division usually consisted of three Brigades – two brigades were British and the other brigade was normally foreign. Several Divisions then formed a “Corps” as such and any cavalry or reserve artillery available at the time was deployed throughout the Divisions in various ways where it was felt they were needed.

Even then there were always exceptions. The corps shown above is an all British/KGL corps with no foreign troops involved. Occasionally the British fielded such an all British corps such as this. For game purposes, this corps is deemed to be the British “regulation” corps.

-----  
 | THE DUCHY OF BRUNSWICK: c1815 | Hypothetical Light Division  
 -----



**Summary:**

- 8 Battalions
- 2 Cavalry Regiments
- 2 Artillery Batteries

**THE DUCHY OF BRUNSWICK c1815:**

**Units: Light Division**

- |                     |   |
|---------------------|---|
| Infantry Brigade:   |   |
| 1) Light Infantry   | Standard Light Infantry, Skirmishers          |
| 2) Light Infantry   | Standard Light Infantry, Skirmishers          |
| 3) Light Infantry   | Standard Light Infantry, Skirmishers          |
|                     |   |
| Infantry Brigade:   |   |
| 4) Guard Infantry   | Standard Infantry, Rifle armed, Sharpshooters |
| 5) Oels             | Standard Infantry                             |
| 6) Line Infantry    | Standard Infantry                             |
| 7) Line Infantry    | Standard Infantry                             |
| 8) Line Infantry    | Standard Infantry                             |
| 9) Foot Artillery   | Medium Foot Artillery, 3 Bases                |
|                     |   |
| Cavalry Brigade:    |   |
| 10) Hussars         | Small Light Cavalry, Reliable                 |
| 11) Uhlán           | Tiny Light Cavalry, Lancers, Reliable         |
| 12) Horse Artillery | Medium Horse Artillery, 3 Bases               |

The **Confederation of the Rhine** was established in July 1806 and consisted of mainly French troops plus a mix of various troops from the following:

The Kingdom of Bavaria  
 The Kingdom of Saxony  
 The Kingdom of Westphalia  
 The Kingdom of Wurttemberg  
 The Duchy of Baden  
 The Duchy of Cleve-Berg  
 The Duchy of Hesse-Darmstadt  
 The Duchy of Oldenburg  
 The Duchy of Warsaw  
 The Principality of Anhalt-Bernburg  
 The Principality of Anhalt-Dessau  
 The Principality of Anhalt-Kothen  
 The Principality of Hohenzollern-Hechingen  
 The Principality of Hohenzollern-Sigmaringen  
 The Principality of Isengurg  
 The Principality of Leyen  
 The Principality of Liechtenstein  
 The Principality of Lippe-Detmold  
 The Principality of Mecklemburg-Schwerin  
 The Principality of Mecklemburg-Strelitz  
 Various Houses and City States

-----  
 | **ANY PRINCIPALITY** | Hypothetical Light Brigade  
 -----

|  
 -----  
 | **LT** |  
**BRG**

|  
 -----  
 | INF |  
BTN

| INF |  
BTN

| LT |  
CAV

#### **Summary:**

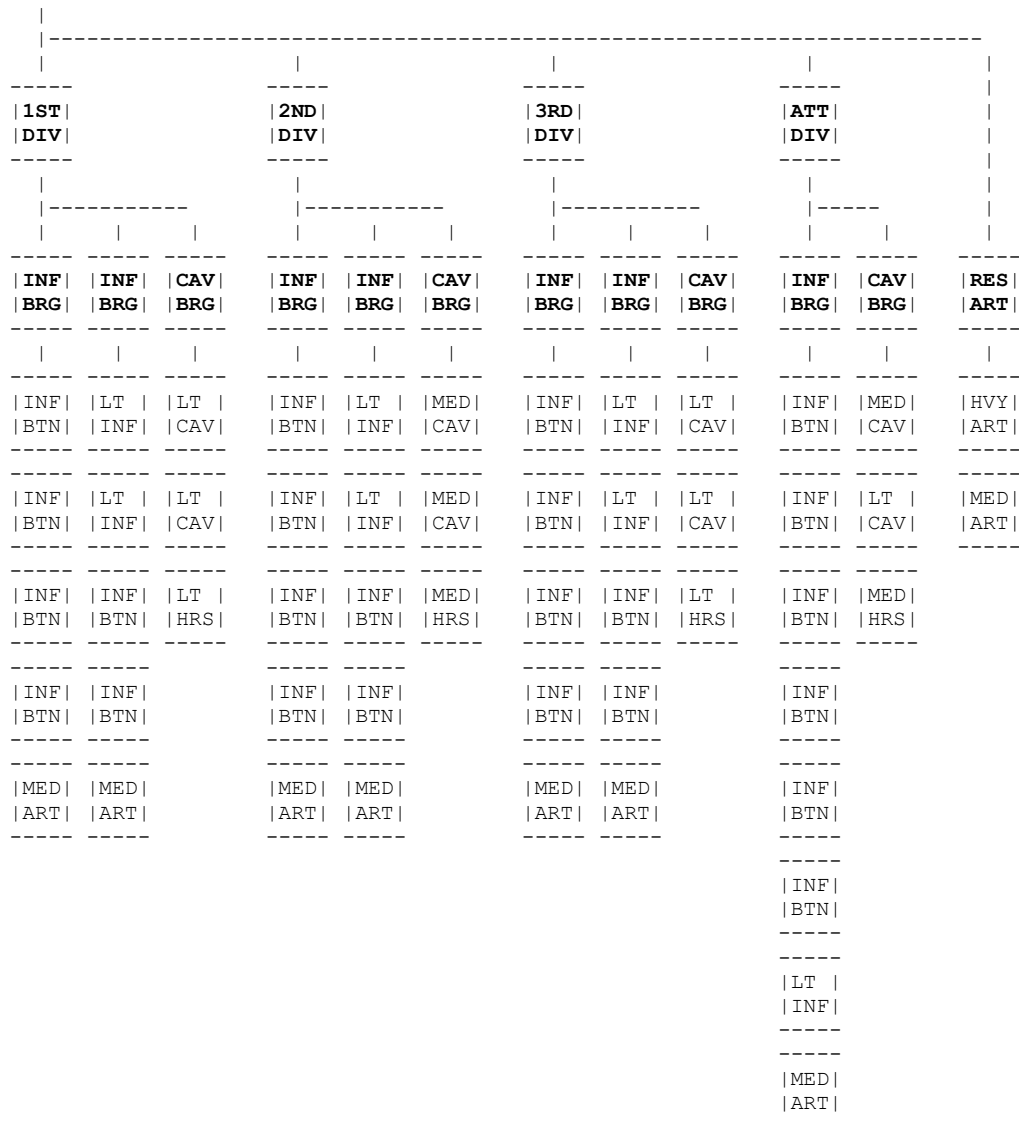
2 Battalions  
 1 Cavalry Regiment  
 No Artillery

#### **ANY PRINCIPALITY:**

##### **Units: Light Brigade**

1) Musketeers	Small Infantry, Untested, Unreliable
2) Musketeers	Small Infantry, Untested, Unreliable
3) Hussars	Tiny Light Cavalry, Untested

-----  
 | THE KINGDOM OF DENMARK: c1807 | Hypothetical Corps  
 -----



**Total:**  
 31 Infantry Battalions  
 8 Cavalry Regiments  
 13 Artillery Batteries

**THE KINGDOM OF DENMARK c1807:**

**Units: 1<sup>st</sup> Division**

Infantry Brigade:

- 1) Line Infantry                      Standard Infantry
- 2) Line Infantry                      Standard Infantry
- 3) Line Infantry                      Standard Infantry
- 4) Line Infantry                      Standard Infantry
- 5) Foot Artillery                      Medium Foot Artillery, 4 Bases

Infantry Brigade:

- 6) Light Infantry                      Standard Light Infantry, Skirmishers
- 7) Light Infantry                      Standard Light Infantry, Skirmishers
- 8) Line Infantry                      Standard Infantry
- 9) Line Infantry                      Standard Infantry
- 10) Foot Artillery                      Medium Foot Artillery, 4 Bases

Attached Cavalry Brigade:

- 11) Light Dragoons                      Small Light Cavalry, Marauders
- 12) Light Dragoons                      Small Light Cavalry, Marauders
- 13) Horse Artillery                      Light Horse Artillery, 3 Bases

**Units: 2<sup>nd</sup> Division**

## Infantry Brigade:

- |                   |                                |
|-------------------|--------------------------------|
| 1) Line Infantry  | Standard Infantry              |
| 2) Line Infantry  | Standard Infantry              |
| 3) Line Infantry  | Standard Infantry              |
| 4) Line Infantry  | Standard Infantry              |
| 5) Foot Artillery | Medium Foot Artillery, 4 Bases |

## Infantry Brigade:

- |                    |                                      |
|--------------------|--------------------------------------|
| 6) Light Infantry  | Standard Light Infantry, Skirmishers |
| 7) Light Infantry  | Standard Light Infantry, Skirmishers |
| 8) Line Infantry   | Standard Infantry                    |
| 9) Line Infantry   | Standard Infantry                    |
| 10) Foot Artillery | Medium Foot Artillery, 4 Bases       |

## Attached Cavalry Brigade:

- |                     |   |
|---------------------|---|
| 11) Dragoons        | Standard Medium Cavalry, Heavy Cavalry +1 |
| 12) Dragoons        | Standard Medium Cavalry, Heavy Cavalry +1 |
| 13) Horse Artillery | Medium Horse Artillery, 3 Bases           |

**Units: 3<sup>rd</sup> Division**

## Infantry Brigade:

- |                   |                                |
|-------------------|--------------------------------|
| 1) Line Infantry  | Standard Infantry              |
| 2) Line Infantry  | Standard Infantry              |
| 3) Line Infantry  | Standard Infantry              |
| 4) Line Infantry  | Standard Infantry              |
| 5) Foot Artillery | Medium Foot Artillery, 4 Bases |

## Infantry Brigade:

- |                    |                                      |
|--------------------|--------------------------------------|
| 6) Light Infantry  | Standard Light Infantry, Skirmishers |
| 7) Light Infantry  | Standard Light Infantry, Skirmishers |
| 8) Line Infantry   | Standard Infantry                    |
| 9) Line Infantry   | Standard Infantry                    |
| 10) Foot Artillery | Medium Foot Artillery, 4 Bases       |

## Attached Cavalry Brigade:

- |                     |                                |
|---------------------|--------------------------------|
| 11) Light Dragoons  | Small Light Cavalry, Marauders |
| 11) Light Dragoons  | Small Light Cavalry, Marauders |
| 13) Horse Artillery | Light Horse Artillery, 3 Bases |

**Units: Attached Guard Division**

## Guard Infantry Brigade:

- |                    |  |
|--------------------|--|
| 1) Guard Infantry  | Standard Infantry, Reliable, Elite 4+  |
| 2) Guard Infantry  | Standard Infantry, Reliable, Elite 4+  |
| 3) Lieb Grenadiers | Standard Infantry, Reliable, Elite 6+  |
| 4) Lieb Grenadiers | Standard Infantry, Reliable, Elite 6+  |
| 5) Line Infantry   | Standard Infantry  |
| 6) Line Infantry   | Standard Infantry  |
| 7) King's Rifle    | Tiny Light Infantry, Skirmishers, Rifle armed, Reliable, Sharpshooters, Elite 6+ |
| 8) Foot Artillery  | Medium Foot Artillery, 4 Bases   |

## Cavalry Brigade:

- |                        |  |
|------------------------|--|
| 9) Guard Heavy Cavalry | Small Medium Cavalry, Heavy Cavalry +1 |
| 10) Hussars            | Small Light Cavalry, Marauders         |
| 11) Horse Artillery    | Light Horse Artillery, 3 Bases         |

**Units: Corps Reserve Artillery**

- |                   |                                |
|-------------------|--------------------------------|
| 1) Foot Artillery | Heavy Foot Artillery, 4 Bases  |
| 2) Foot Artillery | Medium Foot Artillery, 4 Bases |

-----  
 | DUTCH-BELGIAN c1815 | Hypothetical Division  
 -----

| INF |  
DIV

| INF | | INF | | INF | | INF | | CAV | | CAV | | DIV |  
 | BRG | | BRG | | BRG | | BRG | | BRG | | BRG | | ART |  
 -----

| INF | | INF | | INF | | INF | | LT | | MED | | MED |  
 | BTN | | BTN | | BTN | | BTN | | CAV | | CAV | | ART |  
 -----

| INF | | INF | | INF | | INF | | LT | | LT | | MED |  
 | BTN | | BTN | | BTN | | BTN | | CAV | | CAV | | ART |  
 -----

| INF | | INF | | INF | | INF | | MED |  
 | BTN | | BTN | | BTN | | BTN | | HRS |  
 -----

| LT | | LT | | LT |  
 | INF | | INF | | INF |  
 -----

**Summary:**

- 15 Battalions
- 4 Cavalry Regiments
- 3 Artillery Batteries

**DUTCH-BELGIAN c1815:**

**Units: Infantry Division**

Infantry Brigade:

- 1) Line Infantry                      Standard Infantry
- 2) Militia                              Small Infantry, Unreliable
- 3) Militia                              Small Infantry, Unreliable

Infantry Brigade:

- 4) Line Infantry                      Standard Infantry
- 5) Line Infantry                      Standard Infantry
- 6) Line Infantry                      Standard Infantry
- 7) Light Infantry                     Standard Light Infantry, Skirmishers

Infantry Brigade:

- 8) Line Infantry                      Standard Infantry
- 9) Line Infantry                      Standard Infantry
- 10) Line Infantry                     Standard Infantry
- 11) Light Infantry                    Standard Light Infantry, Skirmishers

Infantry Brigade:

- 12) Line Infantry                     Standard Infantry
- 13) Line Infantry                     Standard Infantry
- 14) Line Infantry                     Standard Infantry
- 15) Light Infantry                    Standard Light Infantry, Skirmishers

Attached Light Cavalry Brigade:

- 16) Light Dragoons                   Small Light Cavalry, Marauders
- 17) Hussars                            Small Light Cavalry, Marauders
- 18) Horse Artillery                   Medium Horse Artillery, 3 Bases

Attached Heavy Cavalry Brigade:

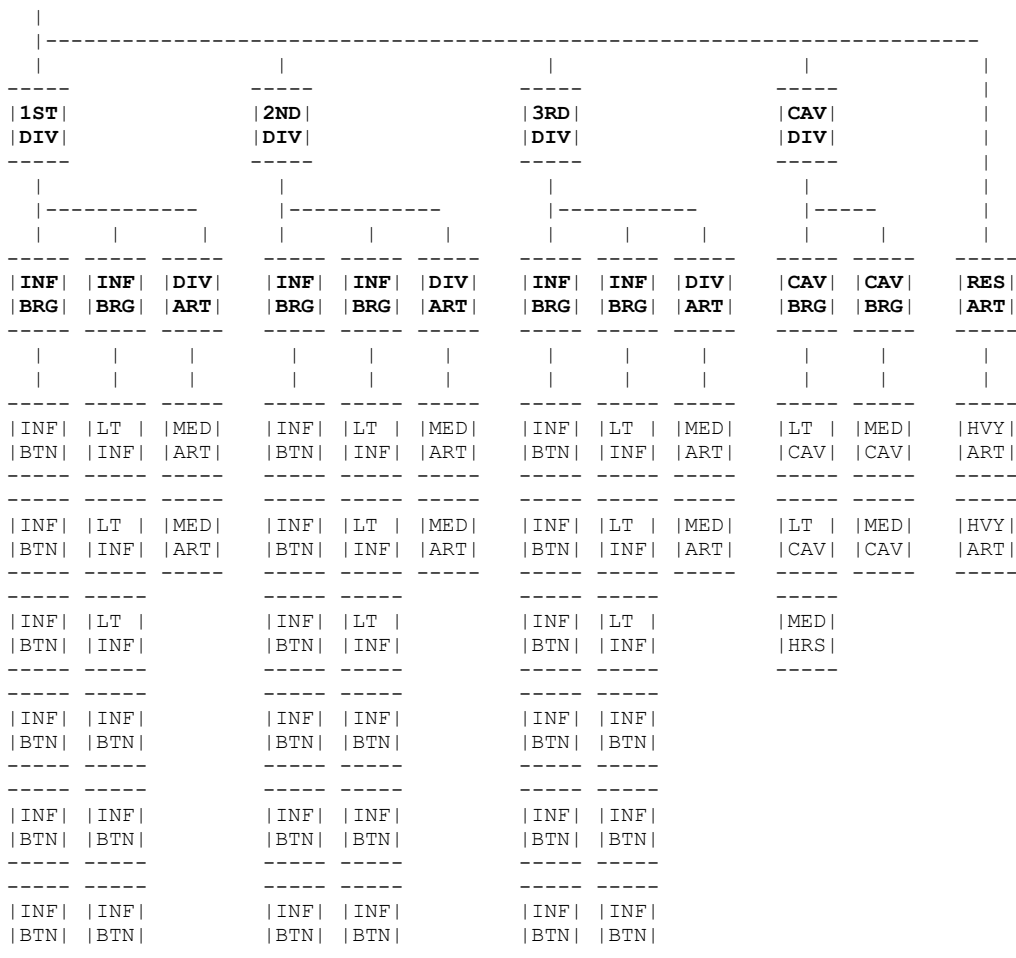
- 19) Carabineers                      Small Medium Cavalry, Heavy Cavalry +1
- 20) Hussars                            Small Light Cavalry, Marauders

Division Artillery:

- 1) Foot Artillery                      Medium Foot Artillery, 4 Bases
- 2) Foot Artillery                      Medium Foot Artillery, 4 Bases



-----  
 | THE REGULATION FRENCH CORPS | Regulation Corps  
 -----



**Summary:**

- 36 Infantry Battalions
- 4 Cavalry Regiments
- 9 Artillery Batteries

**THE REGULATION FRENCH CORPS:**

**Units: 1<sup>st</sup> Infantry Division**

Infantry Brigade:

- |                  |                   |
|------------------|-------------------|
| 1) Line Infantry | Standard Infantry |
| 2) Line Infantry | Standard Infantry |
| 3) Line Infantry | Standard Infantry |
| 4) Line Infantry | Standard Infantry |
| 5) Line Infantry | Standard Infantry |
| 6) Line Infantry | Standard Infantry |

Infantry Brigade:

- |                   |                                      |
|-------------------|--------------------------------------|
| 7) Light Infantry | Standard Light Infantry, Skirmishers |
| 8) Light Infantry | Standard Light Infantry, Skirmishers |
| 9) Light Infantry | Standard Light Infantry, Skirmishers |
| 10) Line Infantry | Standard Infantry, Elite 6+          |
| 11) Line Infantry | Standard Infantry, Elite 6+          |
| 12) Line Infantry | Standard Infantry, Elite 6+          |

Division Artillery:

- |                    |                                |
|--------------------|--------------------------------|
| 13) Foot Artillery | Medium Foot Artillery, 4 Bases |
| 14) Foot Artillery | Medium Foot Artillery, 4 Bases |

**Units: 2<sup>nd</sup> Infantry Division**

## Infantry Brigade:

- |                  |                   |
|------------------|-------------------|
| 1) Line Infantry | Standard Infantry |
| 2) Line Infantry | Standard Infantry |
| 3) Line Infantry | Standard Infantry |
| 4) Line Infantry | Standard Infantry |
| 5) Line Infantry | Standard Infantry |
| 6) Line Infantry | Standard Infantry |

## Infantry Brigade:

- |                   |                                      |
|-------------------|--------------------------------------|
| 7) Light Infantry | Standard Light Infantry, Skirmishers |
| 8) Light Infantry | Standard Light Infantry, Skirmishers |
| 9) Light Infantry | Standard Light Infantry, Skirmishers |
| 10) Line Infantry | Standard Infantry, Elite 6+          |
| 11) Line Infantry | Standard Infantry, Elite 6+          |
| 12) Line Infantry | Standard Infantry, Elite 6+          |

## Division Artillery:

- |                    |                                |
|--------------------|--------------------------------|
| 13) Foot Artillery | Medium Foot Artillery, 4 Bases |
| 14) Foot Artillery | Medium Foot Artillery, 4 Bases |

**Units: 3<sup>rd</sup> Infantry Division**

## Infantry Brigade:

- |                  |                   |
|------------------|-------------------|
| 1) Line Infantry | Standard Infantry |
| 2) Line Infantry | Standard Infantry |
| 3) Line Infantry | Standard Infantry |
| 4) Line Infantry | Standard Infantry |
| 5) Line Infantry | Standard Infantry |
| 6) Line Infantry | Standard Infantry |

## Infantry Brigade:

- |                   |                                      |
|-------------------|--------------------------------------|
| 7) Light Infantry | Standard Light Infantry, Skirmishers |
| 8) Light Infantry | Standard Light Infantry, Skirmishers |
| 9) Light Infantry | Standard Light Infantry, Skirmishers |
| 10) Line Infantry | Standard Infantry, Elite 6+          |
| 11) Line Infantry | Standard Infantry, Elite 6+          |
| 12) Line Infantry | Standard Infantry, Elite 6+          |

## Division Artillery:

- |                    |                                |
|--------------------|--------------------------------|
| 13) Foot Artillery | Medium Foot Artillery, 4 Bases |
| 14) Foot Artillery | Medium Foot Artillery, 4 Bases |

**Units: Cavalry Division**

## Cavalry Brigade:

- |                    |   |
|--------------------|---|
| 1) Chasseurs       | Standard Light Cavalry, Marauders           |
| 2) Hussars         | Standard Light Cavalry, Reliable, Marauders |
| 3) Horse Artillery | Medium Horse Artillery, 3 Bases, Reliable   |

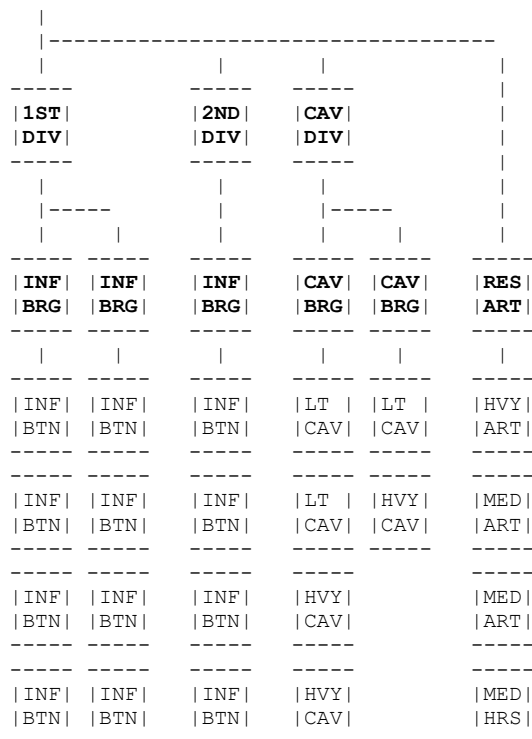
## Cavalry Brigade:

- |             |   |
|-------------|---|
| 4) Dragoons | Standard Medium Cavalry, Heavy Cavalry +1 |
| 5) Dragoons | Standard Medium Cavalry, Heavy Cavalry +1 |

**Units: Corps Reserve Artillery**

- |                   |                               |
|-------------------|-------------------------------|
| 1) Foot Artillery | Heavy Foot Artillery, 4 Bases |
| 2) Foot Artillery | Heavy Foot Artillery, 4 Bases |

-----  
 | THE FRENCH GUARD CORPS c1805 | Historic Corps  
 -----



**Summary:**

- 12 Infantry Battalions
- 6 Cavalry Regiments
- 4 Artillery Batteries

**THE FRENCH GUARD CORPS c1805:**

**Units: Guard Infantry Division**

Guard Infantry Brigade:

- 1) Old Guard Infantry                      Standard Infantry, Skirmishers, Reliable, Valiant, Elite 2+
- 2) Old Guard Infantry                      Standard Infantry, Skirmishers, Reliable, Valiant, Elite 2+
- 3) Old Guard Infantry                      Standard Infantry, Skirmishers, Reliable, Valiant, Elite 2+
- 4) Old Guard Infantry                      Standard Infantry, Skirmishers, Reliable, Valiant, Elite 2+

Guard Infantry Brigade:

- 5) Young Guard Infantry                    Standard Infantry, Skirmishers, Reliable, Valiant, Elite 2+
- 6) Young Guard Infantry                    Standard Infantry, Skirmishers, Reliable, Valiant, Elite 2+
- 7) Young Guard Infantry                    Standard Infantry, Skirmishers, Reliable, Valiant, Elite 2+
- 8) Young Guard Infantry                    Standard Infantry, Skirmishers, Reliable, Valiant, Elite 2+

**Units: Infantry Division**

Infantry Brigade:

- 1) Grenadiers                                Standard Infantry, Skirmishers, Reliable, Valiant, Elite 3+
- 2) Grenadiers                                Standard Infantry, Skirmishers, Reliable, Valiant, Elite 3+
- 3) Grenadiers                                Standard Infantry, Skirmishers, Reliable, Valiant, Elite 3+
- 4) Grenadiers                                Standard Infantry, Skirmishers, Reliable, Valiant, Elite 3+

**Units: Guard Cavalry Division**

Guard Cavalry Brigade:

- 1) Guard Chasseurs a Cheval                Standard Light Cavalry, Reliable, Marauders
- 2) Guard Chasseurs a Cheval                Standard Light Cavalry, Reliable, Marauders
- 3) Guard Grenadiers a Cheval                Standard Heavy Cavalry, Reliable, Heavy Cavalry +D3
- 4) Empress Dragoons                         Small Heavy Cavalry, Reliable, Heavy Cavalry +D3

Guard Cavalry Brigade:

- 5) Polish Chasseurs                         Small Light Cavalry, Reliable, Marauders
- 6) Gendarme d'Elite                         Small Heavy Cavalry, Reliable, Heavy Cavalry +D3

**Units: Guard Corps Reserve Artillery**

- 1) Guard Foot Artillery                      Heavy Foot Artillery, 4 Bases, Reliable
- 2) Guard Foot Artillery                      Medium Foot Artillery, 4 Bases, Reliable
- 3) Guard Foot Artillery                      Medium Foot Artillery, 4 Bases, Reliable
- 4) Guard Horse Artillery                     Medium Horse Artillery, 3 Bases, Reliable



**Units: 3<sup>rd</sup> Infantry Division: Legrand**

## Infantry Brigade: Merle

- |                   |                                      |
|-------------------|--------------------------------------|
| 1) Light Infantry | Standard Light Infantry, Skirmishers |
| 2) Light Infantry | Standard Light Infantry, Skirmishers |
| 3) Light Infantry | Standard Light Infantry, Skirmishers |
| 4) Light Infantry | Standard Light Infantry, Skirmishers |

## Infantry Brigade: Fery

- |                  |                                       |
|------------------|---------------------------------------|
| 5) Line Infantry | Standard Infantry, Reliable, Elite 5+ |
| 6) Line Infantry | Standard Infantry                     |
| 7) Line Infantry | Standard Infantry                     |

## Infantry Brigade: Lavasseur

- |                   |                   |
|-------------------|-------------------|
| 8) Line Infantry  | Standard Infantry |
| 9) Line Infantry  | Standard Infantry |
| 10) Line Infantry | Standard Infantry |
| 11) Line Infantry | Standard Infantry |

## Attached Light Cavalry Brigade: Maragon

- |                     |   |
|---------------------|---|
| 12) Hussars         | Small Light Cavalry, Reliable, Marauders  |
| 13) Chasseurs       | Small Light Cavalry, Marauders            |
| 14) Chasseurs       | Small Light Cavalry, Marauders            |
| 15) Horse Artillery | Medium Horse Artillery, 3 Bases, Reliable |

**Units: Attached Cavalry Division: Beaumont**

## Cavalry Brigade: Boye

- |             |  |
|-------------|--|
| 1) Dragoons | Small Medium Cavalry, Heavy Cavalry +1 |
| 2) Dragoons | Small Medium Cavalry, Heavy Cavalry +1 |
| 3) Dragoons | Small Medium Cavalry, Heavy Cavalry +1 |

## Cavalry Brigade: Scalfort

- |             |  |
|-------------|--|
| 4) Dragoons | Small Medium Cavalry, Heavy Cavalry +1 |
| 5) Dragoons | Small Medium Cavalry, Heavy Cavalry +1 |
| 6) Dragoons | Small Medium Cavalry, Heavy Cavalry +1 |

**Units: Corps Reserve Artillery**

- |                   |                                |
|-------------------|--------------------------------|
| 1) Foot Artillery | Medium Foot Artillery, 4 Bases |
| 2) Foot Artillery | Medium Foot Artillery, 4 Bases |
| 3) Foot Artillery | Medium Foot Artillery, 4 Bases |
| 4) Foot Artillery | Medium Foot Artillery, 4 Bases |

-----  
 | THE 2<sup>nd</sup> FRENCH CORPS | Historic Corps  
ECKMUHL 16<sup>th</sup> APRIL 1809

1ST				2ND					CAV		RES
DIV				DIV					DIV		ART
INF     INF     INF     DIV				INF     INF     INF     DIV     ATT					CAV     CAV		
BRG     BRG     BRG     ART				BRG     BRG     BRG     ART     BRG					BRG     BRG		
LT     INF     INF     MED				LT     INF     INF     LT     LT					HVY     HVY		HVY
INF     BTN     BTN     ART				INF     BTN     BTN     ART     CAV					CAV     CAV		ART
LT     INF     INF				LT     INF     INF					HVY     HVY		MED
INF     BTN     BTN				INF     BTN     BTN					CAV     CAV		ART
LT     INF     INF				LT     INF     INF					MED     MED		
INF     BTN     BTN				INF     BTN     BTN					CAV     HRS		HRS
LT     INF				LT     INF     INF							
INF     BTN     BTN				INF     BTN     BTN							
LT     INF				LT							
INF     BTN				INF							

**Summary:**  
 32 Infantry Battalions  
 6 Cavalry Regiments  
 6 Artillery Batteries

**THE 2<sup>nd</sup> FRENCH CORPS: 16<sup>th</sup> APRIL 1809: Oudinot**

**Units: 1<sup>st</sup> Infantry Division: Tharreau**

Infantry Brigade: Conroux

- 1) Light Infantry                      Small Light Infantry, Skirmishers
- 2) Light Infantry                      Small Light Infantry, Skirmishers
- 3) Light Infantry                      Small Light Infantry, Skirmishers
- 4) Light Infantry                      Small Light Infantry, Skirmishers
- 5) Light Infantry                      Small Light Infantry, Skirmishers
- 6) Light Infantry                      Small Light Infantry, Skirmishers

Infantry Brigade: Albert

- 7) Line Infantry                      Small Infantry
- 8) Line Infantry                      Small Infantry
- 9) Line Infantry                      Small Infantry
- 10) Line Infantry                      Small Infantry
- 11) Line Infantry                      Small Infantry
- 12) Line Infantry                      Small Infantry

Infantry Brigade: Jarry

- 13) Line Infantry                      Small Infantry
- 14) Line Infantry                      Small Infantry
- 15) Line Infantry                      Small Infantry
- 16) Line Infantry                      Small Infantry

Division Artillery:

- 17) Foot Artillery                      Medium Foot Artillery, 4 Bases

**Units: 2<sup>nd</sup> Infantry Division: Claparede**

## Infantry Brigade: Coehorn

- |                   |                                   |
|-------------------|-----------------------------------|
| 1) Light Infantry | Small Light Infantry, Skirmishers |
| 2) Light Infantry | Small Light Infantry, Skirmishers |
| 3) Light Infantry | Small Light Infantry, Skirmishers |
| 4) Light Infantry | Small Light Infantry, Skirmishers |
| 5) Light Infantry | Small Light Infantry, Skirmishers |
| 6) Light Infantry | Small Light Infantry, Skirmishers |

## Infantry Brigade: Lesuire

- |                   |                |
|-------------------|----------------|
| 7) Line Infantry  | Small Infantry |
| 8) Line Infantry  | Small Infantry |
| 9) Line Infantry  | Small Infantry |
| 10) Line Infantry | Small Infantry |
| 11) Line Infantry | Small Infantry |

## Infantry Brigade: Ficatier

- |                   |                |
|-------------------|----------------|
| 12) Line Infantry | Small Infantry |
| 13) Line Infantry | Small Infantry |
| 14) Line Infantry | Small Infantry |
| 15) Line Infantry | Small Infantry |
| 16) Line Infantry | Small Infantry |

## Division Artillery:

- |                    |                               |
|--------------------|-------------------------------|
| 17) Foot Artillery | Light Foot Artillery, 4 Bases |
|--------------------|-------------------------------|

## Attached Light Cavalry Brigade: Colbert

- |               |   |
|---------------|---|
| 18) Hussars   | Standard Light Cavalry, Reliable, Marauders |
| 19) Chasseurs | Standard Light Cavalry, Marauders           |
| 20) Chasseurs | Standard Light Cavalry, Marauders           |

**Units: Attached Heavy Cavalry Division: d'Espagne**

## Cavalry Brigade: Raynaud

- |                    |   |
|--------------------|---|
| 1) Cuirassiers     | Standard Heavy Cavalry, Reliable, Heavy Cavalry +D3 |
| 2) Cuirassiers     | Standard Heavy Cavalry, Reliable, Heavy Cavalry +D3 |
| 3) Horse Artillery | Medium Horse Artillery, 3 Bases, Reliable           |

## Cavalry Brigade: Fouler

- |                    |   |
|--------------------|---|
| 4) Cuirassiers     | Standard Heavy Cavalry, Reliable, Heavy Cavalry +D3 |
| 5) Cuirassiers     | Standard Heavy Cavalry, Reliable, Heavy Cavalry +D3 |
| 6) Horse Artillery | Medium Horse Artillery, 3 Bases, Reliable           |

**Units: Corps Reserve Artillery**

- |                   |                                |
|-------------------|--------------------------------|
| 1) Foot Artillery | Heavy Foot Artillery, 4 Bases  |
| 2) Foot Artillery | Medium Foot Artillery, 4 Bases |

-----  
 | THE DUCHY OF HANOVER: c1815 | Hypothetical Light Division  
 -----

| LT |  
DIV

| INF | | CAV |  
 | BRG | | BRG |  
 -----

| INF | | LT |  
 | BTN | | CAV |  
 -----

| INF | | MED |  
 | BTN | | HRS |  
 -----

| INF |  
BTN

| INF |  
BTN

| INF |  
BTN

| INF |  
BTN

| MED |  
ART

**Summary:**

- 6 Battalions
- 1 Cavalry Regiment
- 2 Artillery Batteries

**THE DUCHY OF HANOVER c1815:**

**Units: Light Division**

Infantry Brigade:

- |                   |                                |
|-------------------|--------------------------------|
| 1) Line Infantry  | Standard Infantry              |
| 2) Line Infantry  | Standard Infantry              |
| 3) Line Infantry  | Standard Infantry              |
| 4) Line Infantry  | Standard Infantry              |
| 5) Landwehr       | Standard Infantry, Unreliable  |
| 6) Landwehr       | Standard Infantry, Unreliable  |
| 7) Foot Artillery | Medium Foot Artillery, 3 Bases |

Cavalry Brigade:

- |                    |                                   |
|--------------------|-----------------------------------|
| 8) Hussars         | Standard Light Cavalry, Marauders |
| 9) Horse Artillery | Medium Horse Artillery, 3 Bases   |



-----  
 | THE DUCHY OF HESSE-CASSEL c1813 | Hypothetical Division  
 -----

| INF |  
DIV

-----  
 | INF | | INF | | INF | | INF | | CAV | | CAV | | RES |  
 | BRG | | BRG | | BRG | | BRG | | BRG | | BRG | | ART |  
 -----

| INF | | INF | | INF | | INF | | LT | | MED | | MED |  
 | BTN | | BTN | | BTN | | BTN | | CAV | | CAV | | ART |  
 -----

| INF | | INF | | INF | | INF | | LT | | MED | | MED |  
 | BTN | | BTN | | BTN | | BTN | | CAV | | CAV | | ART |  
 -----

| INF | | INF | | INF | | INF | | MED |  
 | BTN | | BTN | | BTN | | BTN | | HRS |  
 -----

-----  
 | LT | | INF | | INF |  
 | INF | | BTN | | BTN |  
 -----

**Summary:**

- 15 Battalions
- 4 Cavalry Regiments
- 3 Artillery Batteries

**THE DUCHY OF HESSE-CASSEL c1813:**

**Units: Light Division**

Infantry Brigade:

- 1) Line Infantry                      Standard Infantry
- 2) Landwehr                            Small Infantry, Unreliable
- 3) Landwehr                            Small Infantry, Unreliable

Guard Infantry Brigade:

- 4) Leib Guard                           Small Infantry, Reliable, Elite 4+
- 5) Fusiliers                            Standard Infantry, Reliable, Elite 5+
- 6) Fusiliers                            Standard Infantry, Reliable, Elite 5+
- 7) Light Infantry                        Standard Light Infantry, Skirmish

Infantry Brigade:

- 8) Line Infantry                        Standard Infantry
- 9) Line Infantry                        Standard Infantry
- 10) Line Infantry                       Standard Infantry
- 11) Line Infantry                        Standard Infantry

Infantry Brigade:

- 12) Line Infantry                       Standard Infantry
- 13) Line Infantry                       Standard Infantry
- 14) Line Infantry                       Standard Infantry
- 15) Line Infantry                       Standard Infantry

Attached Cavalry Brigade:

- 16) Guard Hussars                      Small Light Cavalry, Reliable, Marauders
- 17) Hussars                             Small Light Cavalry, Reliable, Marauders
- 18) Horse Artillery                      Medium Horse Artillery, 3 Bases

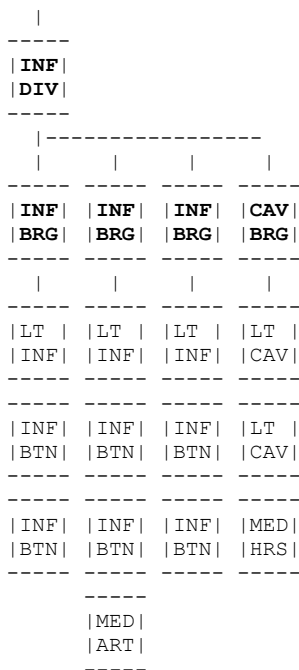
Attached Guard Cavalry Brigade:

- 19) Guard du Corps                      Small Medium Cavalry, Heavy Cavalry +1
- 20) Dragoons                             Small Medium Cavalry, Heavy Cavalry +1

Division Artillery:

- 1) Foot Artillery                        Medium Foot Artillery, 3 Bases
- 2) Foot Artillery                        Medium Foot Artillery, 3 Bases

-----  
 | THE DUCHY OF HESSE-DARMSTADT: c1806 | Hypothetical Division  
 -----



**Summary:**

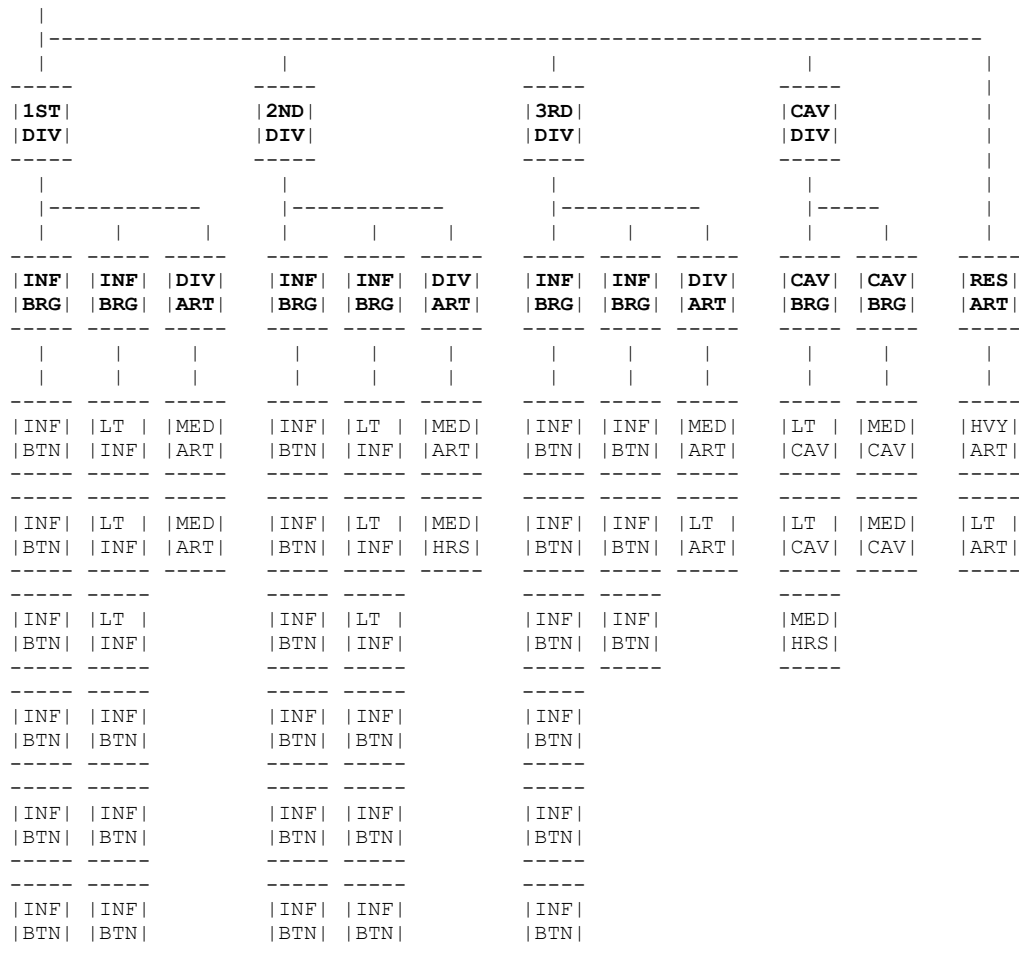
- 9 Battalions
- 2 Cavalry Regiments
- 2 Artillery Batteries

**THE DUCHY OF HESSE-DARMSTADT c1806:**

**Units: Light Division**

- |                                 |  |
|---------------------------------|--|
| Infantry Brigade:               |  |
| 1) Light Infantry               | Standard Light Infantry, Skirmishers     |
| 2) Line Infantry                | Standard Infantry, Reliable, Elite 5+    |
| 3) Landwehr                     | Standard Infantry, Unreliable            |
|                                 |  |
| Infantry Brigade:               |  |
| 4) Light Infantry               | Standard Light Infantry, Skirmishers     |
| 5) Line Infantry                | Standard Infantry                        |
| 6) Line Infantry                | Standard Infantry                        |
| 7) Foot Artillery               | Medium Foot Artillery, 3 Bases           |
|                                 |  |
| Infantry Brigade:               |  |
| 8) Light Infantry               | Standard Light Infantry, Skirmishers     |
| 9) Line Infantry                | Standard Infantry                        |
| 10) Line Infantry               | Standard Infantry                        |
|                                 |  |
| Attached Light Cavalry Brigade: |  |
| 11) Chevauleger                 | Small Light Cavalry, Reliable, Marauders |
| 12) Chevauleger                 | Small Light Cavalry, Reliable, Marauders |
| 13) Horse Artillery             | Medium Horse Artillery, 3 Bases          |

-----  
 | THE KINGDOM OF HOLLAND 1806-1810 | Hypothetical Corps  
 -----



**Summary:**

- 33 Infantry Battalions
- 4 Cavalry Regiments
- 9 Artillery Batteries

**THE KINGDOM OF HOLLAND 1806-1810 (While French Allied):**

**Units: 1<sup>st</sup> Infantry Division**

Infantry Brigade:

- 1) Line Infantry                      Standard Infantry
- 2) Line Infantry                      Standard Infantry
- 3) Line Infantry                      Standard Infantry
- 4) Line Infantry                      Standard Infantry
- 5) Line Infantry                      Standard Infantry
- 6) Line Infantry                      Standard Infantry

Infantry Brigade:

- 7) Light Infantry                      Standard Light Infantry, Skirmishers
- 8) Light Infantry                      Standard Light Infantry, Skirmishers
- 9) Light Infantry                      Standard Light Infantry, Skirmishers
- 10) Line Infantry                      Standard Infantry
- 11) Line Infantry                      Standard Infantry
- 12) Line Infantry                      Standard Infantry

Division Artillery:

- 13) Foot Artillery                      Medium Foot Artillery, 4 Bases
- 14) Foot Artillery                      Medium Foot Artillery, 4 Bases

**Units: 2<sup>nd</sup> Infantry Division**

## Infantry Brigade:

- |                  |                   |
|------------------|-------------------|
| 1) Line Infantry | Standard Infantry |
| 2) Line Infantry | Standard Infantry |
| 3) Line Infantry | Standard Infantry |
| 4) Line Infantry | Standard Infantry |
| 5) Line Infantry | Standard Infantry |
| 6) Line Infantry | Standard Infantry |

## Infantry Brigade:

- |                   |                                      |
|-------------------|--------------------------------------|
| 7) Light Infantry | Standard Light Infantry, Skirmishers |
| 8) Light Infantry | Standard Light Infantry, Skirmishers |
| 9) Light Infantry | Standard Light Infantry, Skirmishers |
| 10) Line Infantry | Standard Infantry                    |
| 11) Line Infantry | Standard Infantry                    |
| 12) Line Infantry | Standard Infantry                    |

## Division Artillery:

- |                     |                                 |
|---------------------|---------------------------------|
| 13) Foot Artillery  | Medium Foot Artillery, 4 Bases  |
| 14) Horse Artillery | Medium Horse Artillery, 3 Bases |

**Units: 3<sup>rd</sup> Infantry Division**

## Infantry Brigade:

- |                  |                   |
|------------------|-------------------|
| 1) Line Infantry | Standard Infantry |
| 2) Line Infantry | Standard Infantry |
| 3) Line Infantry | Standard Infantry |
| 4) Line Infantry | Standard Infantry |
| 5) Line Infantry | Standard Infantry |
| 6) Line Infantry | Standard Infantry |

## Infantry Brigade:

- |                   |                                      |
|-------------------|--------------------------------------|
| 7) Light Infantry | Standard Light Infantry, Skirmishers |
| 8) Line Infantry  | Standard Infantry                    |
| 9) Line Infantry  | Standard Infantry                    |

## Division Artillery:

- |                    |                                |
|--------------------|--------------------------------|
| 10) Foot Artillery | Medium Foot Artillery, 4 Bases |
| 11) Foot Artillery | Light Foot Artillery, 4 Bases  |

**Units: Cavalry Division**

## Cavalry Brigade:

- |                    |                                 |
|--------------------|---------------------------------|
| 1) Hussars         | Small Light Cavalry, Marauders  |
| 2) Hussars         | Small Light Cavalry, Marauders  |
| 3) Horse Artillery | Medium Horse Artillery, 3 Bases |

## Cavalry Brigade:

- |                |  |
|----------------|--|
| 4) Cuirassiers | Small Medium Cavalry, Heavy Cavalry +1 |
| 5) Cuirassiers | Small Medium Cavalry, Heavy Cavalry +1 |

**Units: Corps Reserve Artillery**

- |                   |                               |
|-------------------|-------------------------------|
| 1) Foot Artillery | Heavy Foot Artillery, 3 bases |
| 2) Foot Artillery | Light Foot Artillery, 3 Bases |

-----  
 | THE KING'S GERMAN LEGION c1806 | Historic Division  
 -----

| INF |  
DIV

-----  
 | INF | | INF | | INF | | INF | | INF | | CAV | | CAV |  
 | BRG | | BRG | | BRG | | BRG | | BRG | | BRG | | BRG | | BRG |  
 -----

| LT | | INF | | INF | | INF | | INF | | MED | | LT | |  
 | INF | | INF | | BTN | | BTN | | BTN | | CAV | | CAV | |  
 -----

| LT | | INF | | INF | | INF | | INF | | MED | | LT | |  
 | INF | | INF | | BTN | | BTN | | BTN | | CAV | | CAV | |  
 -----

| MED | | MED | | MED | | MED | | MED | | LT | |  
 | ART | | ART | | ART | | ART | | HRS | | CAV | |  
 -----

| MED |  
HRS

#### Total:

10 Battalions  
 5 Cavalry Regiments  
 6 Artillery Batteries

#### THE KING'S GERMAN LEGION c1806:

##### Units: King's German Legion (Light Division)

###### Infantry Brigade:

- |                       |                 |  |
|-----------------------|-----------------|--|
| 1) KGL Light Infantry | 1 <sup>st</sup> | Standard Light Infantry, Skirmishers, Reliable, Elite 4+ |
| 2) KGL Light Infantry | 2 <sup>nd</sup> | Standard Light Infantry, Skirmishers, Reliable, Elite 4+ |

###### Infantry Brigade:

- |                       |                 |  |
|-----------------------|-----------------|--|
| 3) KGL Line Infantry  | 1 <sup>st</sup> | Standard Infantry, Elite 6+              |
| 4) KGL Line Infantry  | 2 <sup>nd</sup> | Standard Infantry, Elite 6+              |
| 5) KGL Foot Artillery |                 | Medium Foot Artillery, 3 Bases, Reliable |

###### Infantry Brigade:

- |                       |                 |  |
|-----------------------|-----------------|--|
| 6) KGL Line Infantry  | 3 <sup>rd</sup> | Standard Infantry, Elite 6+              |
| 7) KGL Line Infantry  | 4 <sup>th</sup> | Standard Infantry, Elite 6+              |
| 8) KGL Foot Artillery |                 | Medium Foot Artillery, 3 Bases, Reliable |

###### Infantry Brigade:

- |                        |                 |  |
|------------------------|-----------------|--|
| 9) KGL Line Infantry   | 5 <sup>th</sup> | Standard Infantry, Elite 6+              |
| 10) KGL Line Infantry  | 6 <sup>th</sup> | Standard Infantry, Elite 6+              |
| 11) KGL Foot Artillery |                 | Medium Foot Artillery, 3 Bases, Reliable |

###### Infantry Brigade:

- |                        |                 |  |
|------------------------|-----------------|--|
| 12) KGL Line Infantry  | 7 <sup>th</sup> | Standard Infantry, Elite 6+              |
| 13) KGL Line Infantry  | 8 <sup>th</sup> | Standard Infantry, Elite 6+              |
| 14) KGL Foot Artillery |                 | Medium Foot Artillery, 3 Bases, Reliable |

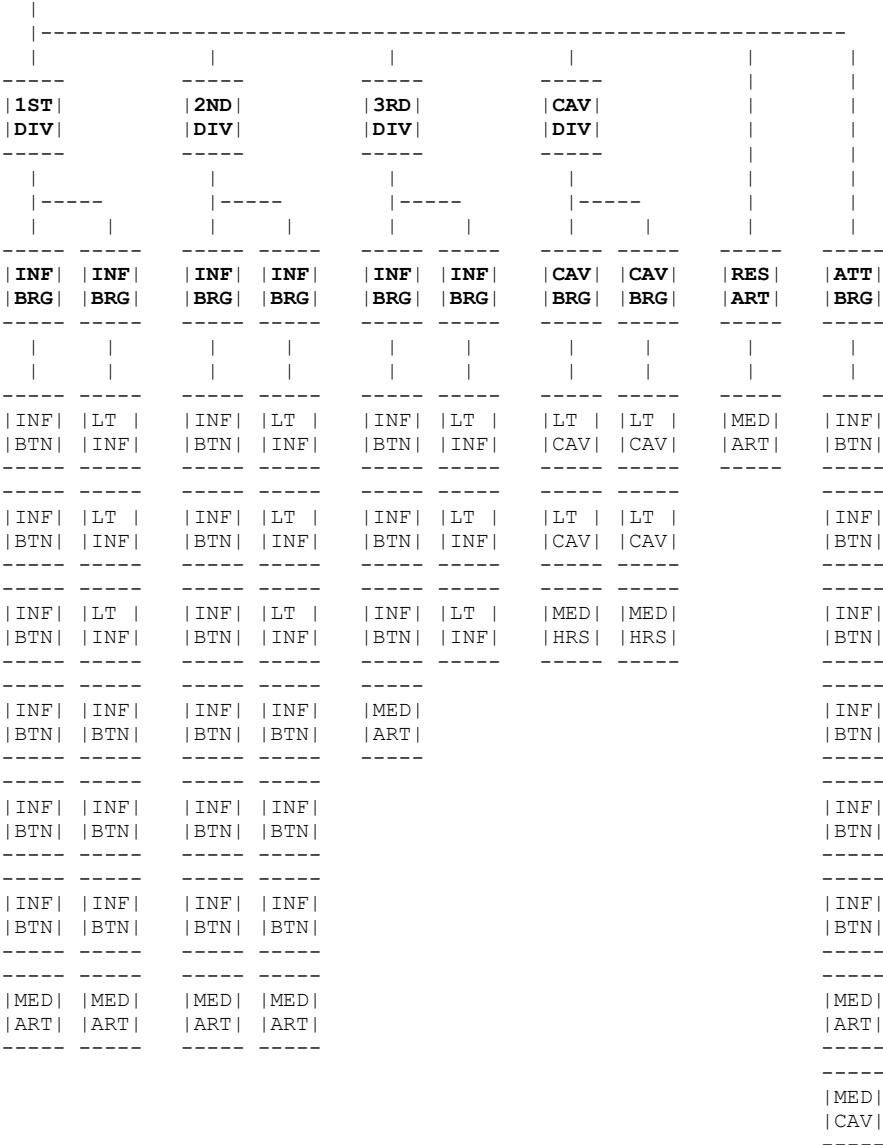
###### Cavalry Brigade:

- |                         |                 |  |
|-------------------------|-----------------|--|
| 15) KGL Heavy Dragoons  | 1 <sup>st</sup> | Small Medium Cavalry, Reliable, Heavy Cavalry +1 |
| 16) KGL Heavy Dragoons  | 2 <sup>nd</sup> | Small Medium Cavalry, Reliable, Heavy Cavalry +1 |
| 17) KGL Horse Artillery |                 | Medium Horse Artillery, 3 Bases, Reliable        |

###### Cavalry Brigade:

- |                         |                 |   |
|-------------------------|-----------------|---|
| 18) KGL Light Dragoons  | 1 <sup>st</sup> | Small Light Cavalry, Reliable, Marauders  |
| 19) KGL Light Dragoons  | 2 <sup>nd</sup> | Small Light Cavalry, Reliable, Marauders  |
| 20) KGL Light Dragoons  | 3 <sup>rd</sup> | Small Light Cavalry, Reliable, Marauders  |
| 21) KGL Horse Artillery |                 | Medium Horse Artillery, 3 Bases, Reliable |

-----  
| THE KINGDOM OF NAPLES | Hypothetical Corps  
-----



**Summary:**  
36 Infantry Battalions  
5 Cavalry Regiments  
9 Artillery Batteries

**THE KINGDOM OF NAPLES:**

**Units: 1<sup>st</sup> Infantry Division**

- Infantry Brigade:
  - 1) Line Infantry                      Standard Infantry
  - 2) Line Infantry                      Standard Infantry
  - 3) Line Infantry                      Standard Infantry
  - 4) Line Infantry                      Standard Infantry
  - 5) Line Infantry                      Standard Infantry
  - 6) Line Infantry                      Standard Infantry
  - 7) Foot Artillery                      Medium Foot Artillery, 3 Bases

- Infantry Brigade:
  - 8) Light Infantry                      Standard Light Infantry, Skirmishers
  - 9) Light Infantry                      Standard Light Infantry, Skirmishers
  - 10) Light Infantry                      Standard Light Infantry, Skirmishers
  - 11) Line Infantry                      Standard Infantry
  - 12) Line Infantry                      Standard Infantry
  - 13) Line Infantry                      Standard Infantry
  - 14) Foot Artillery                      Medium Foot Artillery, 3 Bases

**Units: 2<sup>nd</sup> Infantry Division**

## Infantry Brigade:

- |                   |                                |
|-------------------|--------------------------------|
| 1) Line Infantry  | Standard Infantry              |
| 2) Line Infantry  | Standard Infantry              |
| 3) Line Infantry  | Standard Infantry              |
| 4) Line Infantry  | Standard Infantry              |
| 5) Line Infantry  | Standard Infantry              |
| 6) Line Infantry  | Standard Infantry              |
| 7) Foot Artillery | Medium Foot Artillery, 3 Bases |

## Infantry Brigade:

- |                    |                                      |
|--------------------|--------------------------------------|
| 8) Light Infantry  | Standard Light Infantry, Skirmishers |
| 9) Light Infantry  | Standard Light Infantry, Skirmishers |
| 10) Light Infantry | Standard Light Infantry, Skirmishers |
| 11) Line Infantry  | Standard Infantry                    |
| 12) Line Infantry  | Standard Infantry                    |
| 13) Line Infantry  | Standard Infantry                    |
| 14) Foot Artillery | Medium Foot Artillery, 3 Bases       |

**Units: 3<sup>rd</sup> Infantry Division**

## Infantry Brigade:

- |                   |                                       |
|-------------------|---------------------------------------|
| 1) Grenadiers     | Standard Infantry, Reliable, Elite 5+ |
| 2) Grenadiers     | Standard Infantry, Reliable, Elite 5+ |
| 3) Grenadiers     | Standard Infantry, Reliable, Elite 5+ |
| 4) Foot Artillery | Medium Foot Artillery, 3 Bases        |

## Infantry Brigade:

- |                   |                                      |
|-------------------|--------------------------------------|
| 5) Light Infantry | Standard Light Infantry, Skirmishers |
| 6) Light Infantry | Standard Light Infantry, Skirmishers |
| 7) Light Infantry | Standard Light Infantry, Skirmishers |

**Units: Cavalry Division**

## Cavalry Brigade:

- |                    |                                |
|--------------------|--------------------------------|
| 1) Chasseurs       | Small Light Cavalry, Marauders |
| 2) Chasseurs       | Small Light Cavalry, Marauders |
| 3) Horse Artillery | Light Horse Artillery, 3 Bases |

## Cavalry Brigade:

- |                    |                                |
|--------------------|--------------------------------|
| 4) Chasseurs       | Small Light Cavalry, Marauders |
| 5) Chasseurs       | Small Light Cavalry, Marauders |
| 6) Horse Artillery | Light Horse Artillery, 3 Bases |

**Units: Attached Brigade**

## Infantry Brigade:

- |                         |                                       |
|-------------------------|---------------------------------------|
| 1) Guard Grenadiers     | Standard Infantry, Reliable, Elite 4+ |
| 2) Guard Grenadiers     | Standard Infantry, Reliable, Elite 4+ |
| 3) Guard Marines        | Standard Infantry                     |
| 4) Landwehr             | Small Infantry, Unreliable            |
| 5) Landwehr             | Small Infantry, Unreliable            |
| 6) Landwehr             | Small Infantry, Unreliable            |
| 7) Guard Foot Artillery | Medium Foot Artillery, 3 Bases        |
| 8) Guard d'Onore        | Small Light Cavalry, Reliable         |

**Units: Corps Reserve Artillery**

- |                   |                                |
|-------------------|--------------------------------|
| 1) Foot Artillery | Medium Foot Artillery, 3 Bases |
|-------------------|--------------------------------|

-----  
 | THE DUCHY OF NASSAU c1806 | Hypothetical Light Division  
 -----

```

  |
  -----
  |LT |
  |DIV|
  -----
  |-----|
  |       |
  -----
  |INF| |CAV|
  |BRG| |BRG|
  -----
  |       |
  -----
  |LT | |LT |
  |INF| |CAV|
  -----
  -----
  |INF|
  |BTN|
  -----
  -----
  |INF|
  |BTN|
  -----
  -----
  |INF|
  |BTN|
  -----
  -----
  |MED|
  |ART|
  -----
  
```

**Summary:**

- 4 Battalions
- 1 Cavalry Regiment
- 1 Artillery Battery

**THE DUCHY OF NASSAU c1806:**

**Units: Light Division**

Infantry Brigade:

- |                   |                                      |
|-------------------|--------------------------------------|
| 1) Light Infantry | Standard Light Infantry, Skirmishers |
| 2) Line Infantry  | Standard Infantry                    |
| 3) Line Infantry  | Standard Infantry                    |
| 4) Line Infantry  | Standard Infantry                    |
| 5) Foot Artillery | Medium Foot Artillery, 3 Bases       |

Cavalry Brigade:

- |              |                                |
|--------------|--------------------------------|
| 6) Chasseurs | Small Light Cavalry, Marauders |
|--------------|--------------------------------|



-----  
 | THE KINGDOM OF NORTHERN ITALY 1806 | Historic Corps  
 -----

1ST		2ND		3RD		CAV			
DIV		DIV		DIV		DIV			
INF		INF		INF		CAV		RES	ATT
BRG		BRG		BRG		BRG		ART	BRG
INF	LT	INF	LT	INF	LT	LT	MED	HVY	INF
BTN	INF	BTN	INF	BTN	INF	CAV	CAV	ART	BTN
INF	LT	INF	LT	INF	LT	LT	MED		INF
BTN	INF	BTN	INF	BTN	INF	CAV	CAV		BTN
INF	LT	INF	LT	INF	LT	LT	LT		INF
BTN	INF	BTN	INF	BTN	INF	HRS	HRS		BTN
INF	INF	INF	INF	MED					LT
BTN	BTN	BTN	BTN	ART					INF
INF	INF	INF	INF						LT
BTN	BTN	BTN	BTN						INF
INF	INF	INF	INF						LT
BTN	BTN	BTN	BTN						INF
MED	MED	MED	MED						MED
ART	ART	ART	ART						CAV
									MED
									HRS

**Summary:**  
 36 Infantry Battalions  
 5 Cavalry Regiments  
 9 Artillery Batteries

**THE KINGDOM OF NORTHERN ITALY c1806:**

**Units: 1<sup>st</sup> Infantry Division**

- Infantry Brigade:
- 1) Line Infantry                      Standard Infantry
  - 2) Line Infantry                      Standard Infantry
  - 3) Line Infantry                      Standard Infantry
  - 4) Line Infantry                      Standard Infantry
  - 5) Line Infantry                      Standard Infantry
  - 6) Line Infantry                      Standard Infantry
  - 7) Foot Artillery                      Medium Foot Artillery, 4 Bases
- Infantry Brigade:
- 8) Light Infantry                      Standard Light Infantry, Skirmishers
  - 9) Light Infantry                      Standard Light Infantry, Skirmishers
  - 10) Light Infantry                      Standard Light Infantry, Skirmishers
  - 11) Line Infantry                      Standard Infantry
  - 12) Line Infantry                      Standard Infantry
  - 13) Line Infantry                      Standard Infantry
  - 14) Foot Artillery                      Medium Foot Artillery, 4 Bases

**Units: 2<sup>nd</sup> Infantry Division**

## Infantry Brigade:

- |                   |                                |
|-------------------|--------------------------------|
| 1) Line Infantry  | Standard Infantry              |
| 2) Line Infantry  | Standard Infantry              |
| 3) Line Infantry  | Standard Infantry              |
| 4) Line Infantry  | Standard Infantry              |
| 5) Line Infantry  | Standard Infantry              |
| 6) Line Infantry  | Standard Infantry              |
| 7) Foot Artillery | Medium Foot Artillery, 4 Bases |

## Infantry Brigade:

- |                    |                                      |
|--------------------|--------------------------------------|
| 8) Light Infantry  | Standard Light Infantry, Skirmishers |
| 9) Light Infantry  | Standard Light Infantry, Skirmishers |
| 10) Light Infantry | Standard Light Infantry, Skirmishers |
| 11) Line Infantry  | Standard Infantry                    |
| 12) Line Infantry  | Standard Infantry                    |
| 13) Line Infantry  | Standard Infantry                    |
| 14) Foot Artillery | Medium Foot Artillery, 4 Bases       |

**Units: 3<sup>rd</sup> Infantry Division**

## Infantry Brigade:

- |                   |                                |
|-------------------|--------------------------------|
| 1) Venetian Guard | Standard Infantry              |
| 2) Milan Guard    | Standard Infantry              |
| 3) Milan Militia  | Small Infantry, Unreliable     |
| 4) Foot Artillery | Medium Foot Artillery, 3 Bases |

## Infantry Brigade:

- |                   |                                      |
|-------------------|--------------------------------------|
| 5) Light Infantry | Standard Light Infantry, Skirmishers |
| 6) Light Infantry | Standard Light Infantry, Skirmishers |
| 7) Light Infantry | Standard Light Infantry, Skirmishers |

**Units: Cavalry Division**

## Cavalry Brigade:

- |                    |                                |
|--------------------|--------------------------------|
| 1) Chasseurs       | Small Light Cavalry, Marauders |
| 2) Chasseurs       | Small Light Cavalry, Marauders |
| 3) Horse Artillery | Light Horse Artillery, 3 Bases |

## Cavalry Brigade:

- |                    |   |
|--------------------|---|
| 4) Dragoons        | Small Medium Cavalry, Reliable, Heavy Cavalry +D3 |
| 5) Dragoons        | Small Medium Cavalry, Reliable, Heavy Cavalry +D3 |
| 6) Horse Artillery | Light Horse Artillery, 3 Bases                    |

**Units: Corps Reserve Artillery**

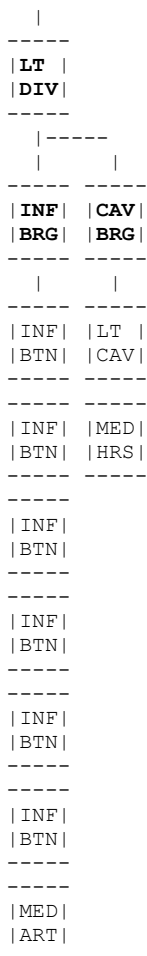
- |                   |   |
|-------------------|---|
| 1) Foot Artillery | Heavy Foot Artillery, 3 Bases, Reliable |
|-------------------|---|

**Units: Attached Guard Brigade**

## Guard Brigade:

- |                          |  |
|--------------------------|--|
| 1) Guard Grenadiers      | Standard Infantry, Skirmishers, Reliable, Elite 5+ |
| 2) Guard Grenadiers      | Standard Infantry, Skirmishers, Reliable, Elite 5+ |
| 3) Guard Grenadiers      | Standard Infantry, Skirmishers, Reliable, Elite 5+ |
| 4) Guard Marines         | Standard Infantry, Elite +6                        |
| 5) Light Infantry        | Standard Light Infantry, Skirmishers               |
| 6) Light Infantry        | Standard Light Infantry, Skirmishers               |
| 7) Guard Cavalry         | Small Medium Cavalry, Reliable, Heavy Cavalry +D3  |
| 8) Guard Horse Artillery | Medium Horse Artillery, 3 Bases, Reliable          |

-----  
 | THE DUCHY OF OLDENBURG: c1811 | Hypothetical Light Division  
 -----



**Summary:**  
 6 Battalions  
 1 Cavalry Regiments  
 2 Artillery Batteries

**THE DUCHY OF OLDENBURG c1811:**

**Units: Light Division**

- Infantry Brigade:
- 1) Line Infantry            127<sup>th</sup>    Standard Infantry
  - 2) Landwehr                127<sup>th</sup>    Small Infantry, Unreliable
  - 3) Line Infantry            128<sup>th</sup>    Standard Infantry
  - 4) Landwehr                128<sup>th</sup>    Small Infantry, Unreliable
  - 5) Line Infantry            129<sup>th</sup>    Standard Infantry
  - 6) Landwehr                129<sup>th</sup>    Small Infantry, Unreliable
  - 7) Foot Artillery                           Medium Foot Artillery, 3 Bases
- Cavalry Brigade:
- 8) Uhlan                     Standard Light Cavalry, Lancers, Reliable
  - 9) Horse Artillery                          Medium Horse Artillery, 3 Bases

-----  
 | AN OTTOMAN ODJAK (CORPS) | Very Hypothetical Corps, see the notes.  
 -----

-----																
1ST					2ND					3RD						
DIV					DIV					DIV						
-----																
INF     INF     INF     INF     CAV     CAV     INF     INF     INF     INF     INF     CAV     RES																
BRG     BRG     BRG     BRG     BRG     BRG     BRG     BRG     BRG     BRG     BRG     BRG     ART																
-----																
LT     LT     INF     INF     MED     LT     LT     INF     INF     LT     LT     LT     LT     LT     INF     LT     MED																
INF     INF     BTN     BTN     CAV     CAV     INF     BTN     BTN     CAV     CAV     INF     INF     INF     BTN     CAV     ART																
-----																
LT     LT     INF     INF     LT     LT     LT     INF     INF     MED     MED     LT     LT     LT     INF     LT     MED																
INF     INF     BTN     BTN     CAV     CAV     INF     BTN     BTN     CAV     CAV     INF     INF     INF     BTN     CAV     ART																
-----																
INF     INF     LT     LT     LT     INF     INF     INF     LT     MED																
BTN     BTN     CAV     CAV     INF     BTN     BTN     BTN     CAV     ART																
-----																
INF     INF     LT     INF     INF     LT     MED																
BTN     BTN     INF     BTN     BTN     BTN     CAV     ART																
-----																
INF     MED     MED																
BTN     ART     ART																
-----																

### Summary:

34 Battalions

14 Cavalry Regiments

7 Artillery Batteries

### AN OTTOMAN ODJAK (CORPS):

#### Units: 1<sup>st</sup> Beylerbeyis (Division)

Infantry Orta (Brigade):

- |             |   |
|-------------|---|
| 1) Derbents | Small Light Infantry, Skirmishers, Can't fire, Unreliable |
| 2) Fellahin | Small Light Infantry, Skirmishers, Can't fire, Unreliable |

Infantry Orta (Brigade):

- |             |   |
|-------------|---|
| 3) Derbents | Small Light Infantry, Skirmishers, Can't fire, Unreliable |
| 4) Fellahin | Small Light Infantry, Skirmishers, Can't fire, Unreliable |

Infantry Orta (Brigade):

- |                                     |                                |
|-------------------------------------|--------------------------------|
| 5) Janissaries                      | Standard Infantry              |
| 6) Janissaries                      | Standard Infantry              |
| 7) Janissaries                      | Standard Infantry              |
| 8) Guard Janissaries                | Standard Infantry, Valiant     |
| 9) Guard Janissaries                | Standard Infantry, Valiant     |
| 10) French Mercenary Foot Artillery | Medium Foot Artillery, 3 Bases |

Infantry Orta (Brigade):

- |             |                              |
|-------------|------------------------------|
| 11) Sekhans | Standard Infantry, Bow armed |
| 12) Sekhans | Standard Infantry, Bow armed |
| 13) Sekhans | Standard Infantry, Bow armed |
| 14) Azaps   | Standard Infantry            |

Cavalry Orta (Brigade):

- |                  |  |
|------------------|--|
| 15) Mamelukes    | Standard Light Cavalry, Reliable, Valiant, Marauders |
| 16) Arab Cavalry | Small Light Cavalry, Unreliable                      |
| 17) Arab Cavalry | Small Light Cavalry, Unreliable                      |

Black Powder Army Guidelines

## Cavalry Orta (Brigade):

- |                  |                                 |
|------------------|---------------------------------|
| 18) Djellis      | Small Light Cavalry             |
| 19) Akinjis      | Small Light Cavalry             |
| 20) Arab Cavalry | Small Light Cavalry, Unreliable |

**Units: 2<sup>nd</sup> Beylerbeyis (Division)**

## Infantry Orta (Brigade):

- |             |   |
|-------------|---|
| 1) Derbents | Small Light Infantry, Skirmishers, Can't fire, Unreliable |
| 2) Fellahin | Small Light Infantry, Skirmishers, Can't fire, Unreliable |
| 3) Fellahin | Small Light Infantry, Skirmishers, Can't fire, Unreliable |
| 4) Fellahin | Small Light Infantry, Skirmishers, Can't fire, Unreliable |

## Infantry Orta (Brigade):

- |                  |                   |
|------------------|-------------------|
| 5) Nizam-i-jedid | Standard Infantry |
| 6) Nizam-i-jedid | Standard Infantry |
| 7) Nizam-i-jedid | Standard Infantry |
| 8) Nizam-i-jedid | Standard Infantry |

(The French mercenary foot artillery unit may be deployed with this Nizam-i-jedid Orta instead of the Janissary Orta)

## Infantry Orta (Brigade):

- |             |                              |
|-------------|------------------------------|
| 9) Sekhans  | Standard Infantry, Bow armed |
| 10) Sekhans | Standard Infantry, Bow armed |
| 11) Sekhans | Standard Infantry, Bow armed |

## Cavalry Orta (Brigade):

- |                |                        |
|----------------|------------------------|
| 12) Suvarileri | Standard Light Cavalry |
| 13) Sipahi     | Small Light Cavalry    |

## Cavalry Orta (Brigade):

- |                      |                        |
|----------------------|------------------------|
| 14) Suvarileri Guard | Standard Light Cavalry |
| 15) Sipahi           | Small Light Cavalry    |

**Units: 3<sup>rd</sup> Beylerbeyis (Division)**

## Infantry Orta (Brigade):

- |             |   |
|-------------|---|
| 1) Derbents | Small Light Infantry, Skirmishers, Can't fire, Unreliable |
| 2) Fellahin | Small Light Infantry, Skirmishers, Can't fire, Unreliable |

## Infantry Orta (Brigade):

- |             |   |
|-------------|---|
| 3) Derbents | Small Light Infantry, Skirmishers, Can't fire, Unreliable |
| 4) Fellahin | Small Light Infantry, Skirmishers, Can't fire, Unreliable |

## Infantry Orta (Brigade):

- |             |   |
|-------------|---|
| 5) Derbents | Small Light Infantry, Skirmishers, Can't fire, Unreliable |
| 6) Fellahin | Small Light Infantry, Skirmishers, Can't fire, Unreliable |

## Infantry Orta (Brigade):

- |            |                              |
|------------|------------------------------|
| 7) Sekhans | Standard Infantry, Bow armed |
| 8) Sekhans | Standard Infantry, Bow armed |
| 9) Sekhans | Standard Infantry, Bow armed |
| 10) Rayas  | Standard Infantry            |

## Cavalry Orta (Brigade):

- |                  |                                 |
|------------------|---------------------------------|
| 11) Yorkus       | Standard Light Cavalry          |
| 12) Arab Cavalry | Small Light Cavalry, Unreliable |
| 13) Arab Cavalry | Small Light Cavalry, Unreliable |
| 14) Arab Cavalry | Small Light Cavalry, Unreliable |

**Units: Odjak (Corps) Reserve Artillery**

- |                             |                                |
|-----------------------------|--------------------------------|
| 1) Topijis (Foot Artillery) | Medium Foot Artillery, 3 bases |
| 2) Topijis (Foot Artillery) | Medium Foot Artillery, 3 bases |
| 3) Topijis (Foot Artillery) | Medium Foot Artillery, 3 bases |
| 4) Topijis (Foot Artillery) | Medium Foot Artillery, 3 bases |
| 5) Topijis (Foot Artillery) | Medium Foot Artillery, 3 bases |
| 6) Topijis (Foot Artillery) | Medium Foot Artillery, 3 bases |

**NOTES:**

The Ottoman regular army consisted of three branches – the Kapikulu (the infantry), the Suvarileri (the cavalry) and the Topiji (the artillery). The Kapikulu consisted of the Janissaries and the Nizam-i-jedid (new order troops). The Janissaries consisted of three groups: the Djemaats (stationed in Istanbul), the Benluks (stationed in the provinces) and the Solaks (the Sultan's Guard).

The Suvarileri consisted of the Silahtars, the Siphahi Oglans, the Ulufecijan and the Gureba.

The Topiji batteries normally consisted of four 24 pounders plus six 6 pounders. The 24 pounders were rarely deployed on the battle field but rather in fixed defensive positions. The 6 pounders were used in the same way as the Europeans used their foot batteries. There were a small number of French mercenary gunners deployed with the Topiji.

The provincial infantry consisted of the Sekhans, the Rayas, the Azaps, the Derbents and the Fellahin. The Sekhans were the most numerous; they had some training but were poorly armed usually with bow. The Rayas were mountain troops which were reasonably well trained and equipped. The Azaps were militia, few in number but well trained and equipped on a par with the Janissaries. The Derbents were local defence militia with a little training. The Fellahin were local peasant levies, an untrained and virtually unarmed rabble, often only armed with no more than improvised weapons.

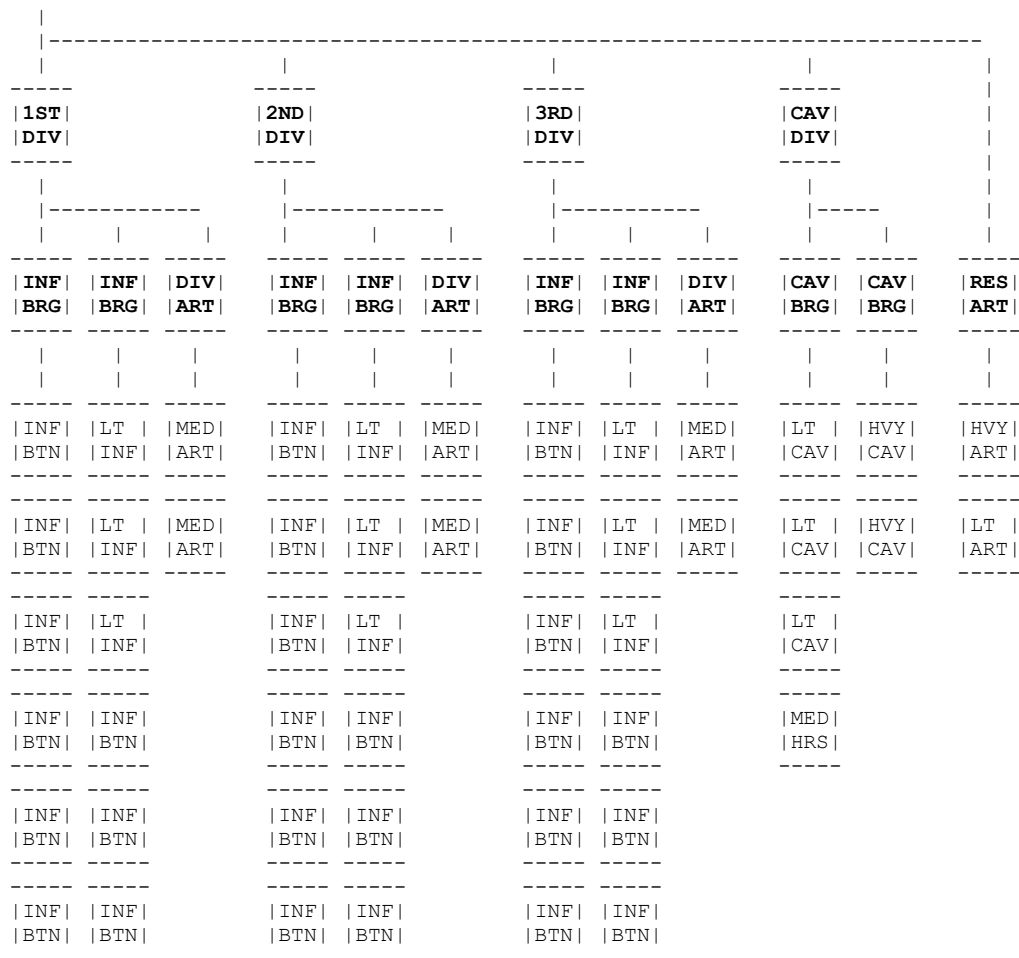
The provincial cavalry consisted of the Sipahi, the Mamelukes, the Akinjis, the Yorkus and the Djellis. The Sipahi were largely feudal cavalry maintained by local provinces. The Mamelukes were well equipped and well trained, probably the best cavalry the Ottomans had. The Akinjis were Light cavalry maintained by local provinces. The Yorkus were light cavalry raised mainly in the south; the Djellis were light cavalry raised mainly in the north. Arab cavalry were basically local peasant levy cavalry. They were untrained and virtually unarmed.

Organisation? There appears to have been no formal organisation as such. The above organisation is hypothetical. However, it appears that the regular infantry may have been formed up into one division with all others organised into the other divisions in brigades by province. The Janissaries and the Nizam-i-jedid hated each other; they had very different political agendas. It appears that the Janissaries and Nizam-i-jedid were never organised into the same division.

#### **Special rules for the Ottomans:**

- 1) The Janissaries and the Nizam-i-jedid hated each other. Therefore, Janissary and Nizam-i-jedid units must never be deployed in the same Beylerbeyis (Division). Also, Janissary and Nizam-i-jedid units must not stop and remain within 12" of each other at any time. They may come closer and move past each other but the units must not be within 12" of each other at the end of their movement. If they can't do this then they simply run away and are removed from play.
- 2) Fellahin, Derbent and Sekhan units cannot use mixed order.
- 3) Sekhan units can fire but fire with bows.
- 4) Fellahin and Derbents units cannot fire. Fellahin and Derbents units can only engage in hand-to-hand combat.

-----  
 | THE GRAND DUCHY OF WARSAW c1808 | Polish Hypothetical Corps  
 -----



**Summary:**  
 36 Infantry Battalions  
 5 Cavalry Regiments  
 9 Artillery Batteries

**THE GRAND DUCHY OF WARSAW c1808:**

**Units: 1<sup>st</sup> Infantry Division**

Infantry Brigade:

- 1) Line Infantry                      Standard Infantry
- 2) Line Infantry                      Standard Infantry
- 3) Line Infantry                      Standard Infantry
- 4) Line Infantry                      Standard Infantry
- 5) Line Infantry                      Standard Infantry
- 6) Line Infantry                      Standard Infantry

Infantry Brigade:

- 7) Light Infantry                      Standard Light Infantry, Skirmishers
- 8) Light Infantry                      Standard Light Infantry, Skirmishers
- 9) Light Infantry                      Standard Light Infantry, Skirmishers
- 10) Line Infantry                      Standard Infantry
- 11) Line Infantry                      Standard Infantry
- 12) Line Infantry                      Standard Infantry

Division Artillery:

- 13) Foot Artillery                      Medium Foot Artillery, 3 Bases
- 14) Foot Artillery                      Medium Foot Artillery, 3 Bases

**Units: 2<sup>nd</sup> Infantry Division**

## Infantry Brigade:

- |                  |                   |
|------------------|-------------------|
| 1) Line Infantry | Standard Infantry |
| 2) Line Infantry | Standard Infantry |
| 3) Line Infantry | Standard Infantry |
| 4) Line Infantry | Standard Infantry |
| 5) Line Infantry | Standard Infantry |
| 6) Line Infantry | Standard Infantry |

## Infantry Brigade:

- |                   |                                      |
|-------------------|--------------------------------------|
| 7) Light Infantry | Standard Light Infantry, Skirmishers |
| 8) Light Infantry | Standard Light Infantry, Skirmishers |
| 9) Light Infantry | Standard Light Infantry, Skirmishers |
| 10) Line Infantry | Standard Infantry                    |
| 11) Line Infantry | Standard Infantry                    |
| 12) Line Infantry | Standard Infantry                    |

## Division Artillery:

- |                    |                                |
|--------------------|--------------------------------|
| 13) Foot Artillery | Medium Foot Artillery, 3 Bases |
| 14) Foot Artillery | Medium Foot Artillery, 3 Bases |

**Units: 3<sup>rd</sup> Infantry Division**

## Guard Infantry Brigade:

- |                   |                                       |
|-------------------|---------------------------------------|
| 1) Guard Infantry | Standard Infantry, Reliable, Elite +5 |
| 2) Guard Infantry | Standard Infantry, Reliable, Elite +5 |
| 3) Guard Infantry | Standard Infantry, Reliable, Elite +5 |
| 4) Line Infantry  | Standard Infantry                     |
| 5) Line Infantry  | Standard Infantry                     |
| 6) Line Infantry  | Standard Infantry                     |

## Infantry Brigade:

- |                   |                                      |
|-------------------|--------------------------------------|
| 7) Light Infantry | Standard Light Infantry, Skirmishers |
| 8) Light Infantry | Standard Light Infantry, Skirmishers |
| 9) Light Infantry | Standard Light Infantry, Skirmishers |
| 10) Line Infantry | Standard Infantry                    |
| 11) Line Infantry | Standard Infantry                    |
| 12) Line Infantry | Standard Infantry                    |

## Division Artillery:

- |                    |                                |
|--------------------|--------------------------------|
| 13) Foot Artillery | Medium Foot Artillery, 3 Bases |
| 14) Foot Artillery | Medium Foot Artillery, 3 Bases |

**Units: Cavalry Division**

## Cavalry Brigade:

- |                    |   |
|--------------------|---|
| 1) Chasseurs       | Small Light Cavalry, Reliable, Marauders  |
| 2) Hussars         | Small Light Cavalry, Reliable, Marauders  |
| 3) Lancers         | Standard Light Cavalry, Lancers, Reliable |
| 4) Horse Artillery | Medium Horse Artillery, 3 Bases           |

## Cavalry Brigade:

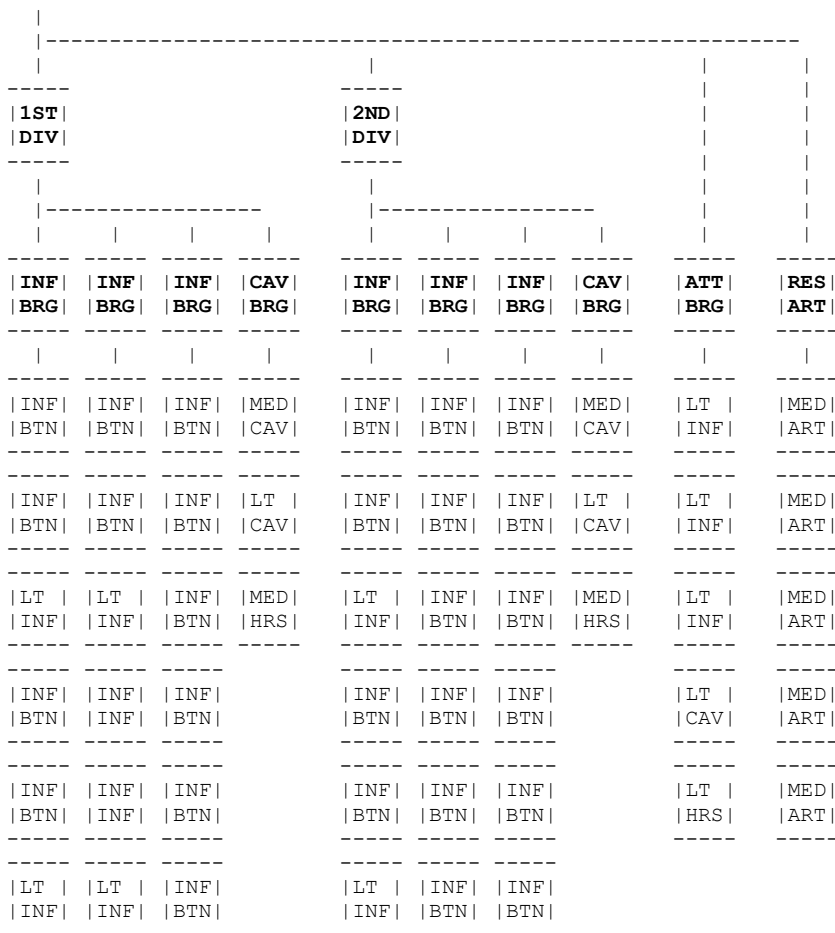
- |                |  |
|----------------|--|
| 5) Cuirassiers | Small Heavy Cavalry, Reliable, Heavy Cavalry +D3 |
| 6) Cuirassiers | Small Heavy Cavalry, Reliable, Heavy Cavalry +D3 |

**Units: Corps Reserve Artillery**

- |                   |                               |
|-------------------|-------------------------------|
| 1) Foot Artillery | Heavy Foot Artillery, 3 Bases |
| 2) Foot Artillery | Light Foot Artillery, 3 Bases |



-----  
 | A PORTUGUESE CORPS c1808 | Hypothetical Corps  
 -----



**Total:**  
 39 Battalions  
 5 Cavalry Regiments  
 8 Artillery Batteries

**A PORTUGUESE CORPS c1808:**

**Units: 1<sup>st</sup> Division**

- Infantry Brigade:  
 1) Line Infantry                   Standard Infantry, Unreliable  
 2) Line Infantry                   Standard Infantry, Unreliable  
 3) Cacadore                        Small Light Infantry, Skirmishers, Unreliable  
 4) Line Infantry                   Standard Infantry  
 5) Line Infantry                   Standard Infantry  
 6) Cacadore                        Small Light Infantry, Skirmishers, Unreliable

- Infantry Brigade:  
 7) Line Infantry                   Standard Infantry, Unreliable  
 8) Line Infantry                   Standard Infantry, Unreliable  
 9) Cacadore                        Small Light Infantry, Skirmishers, Unreliable  
 10) Line Infantry                   Standard Infantry  
 11) Line Infantry                   Standard Infantry  
 12) Cacadore                        Small Light Infantry, Skirmishers, Unreliable

- Infantry Brigade:  
 13) Line Infantry                   Standard Infantry, Unreliable  
 14) Line Infantry                   Standard Infantry, Unreliable  
 15) Ordeanaza                      Tiny Infantry, Unreliable, Untested  
 16) Line Infantry                   Standard Infantry  
 17) Line Infantry                   Standard Infantry  
 18) Ordeanaza                      Tiny Infantry, Unreliable, Untested

## Attached Cavalry Brigade:

- |                     |  |
|---------------------|--|
| 19) Dragoons        | Small Medium Cavalry, Heavy Cavalry +1 |
| 20) Hussars         | Small Light Cavalry                    |
| 21) Horse Artillery | Medium Horse Artillery, 3 bases        |

**Units: 2<sup>nd</sup> Division**

## Infantry Brigade:

- |                             |   |
|-----------------------------|---|
| 1) Line Infantry            | Standard Infantry, Unreliable                                 |
| 2) Line Infantry            | Standard Infantry, Unreliable                                 |
| 3) 3 <sup>rd</sup> Cacadore | Small Light Infantry, Skirmishers, Rifle armed, Sharpshooters |
| 4) Line Infantry            | Standard Infantry   |
| 5) Line Infantry            | Standard Infantry   |
| 6) Cacadore                 | Small Light Infantry, Skirmishers, Unreliable                 |

## Infantry Brigade:

- |                   |                                     |
|-------------------|-------------------------------------|
| 7) Line Infantry  | Standard Infantry, Unreliable       |
| 8) Line Infantry  | Standard Infantry, Unreliable       |
| 9) Ordeanaza      | Tiny Infantry, Unreliable, Untested |
| 10) Line Infantry | Standard Infantry                   |
| 11) Line Infantry | Standard Infantry                   |
| 12) Ordeanaza     | Tiny Infantry, Unreliable, Untested |

## Infantry Brigade:

- |                   |                                     |
|-------------------|-------------------------------------|
| 13) Line Infantry | Standard Infantry, Unreliable       |
| 14) Line Infantry | Standard Infantry, Unreliable       |
| 15) Ordeanaza     | Tiny Infantry, Unreliable, Untested |
| 16) Line Infantry | Standard Infantry                   |
| 17) Line Infantry | Standard Infantry                   |
| 18) Ordeanaza     | Tiny Infantry, Unreliable, Untested |

## Attached Cavalry Brigade:

- |                     |  |
|---------------------|--|
| 19) Dragoons        | Small Medium Cavalry, Heavy Cavalry +1 |
| 20) Hussars         | Small Light Cavalry                    |
| 21) Horse Artillery | Medium Horse Artillery, 3 bases        |

**Units: Attached Brigade**

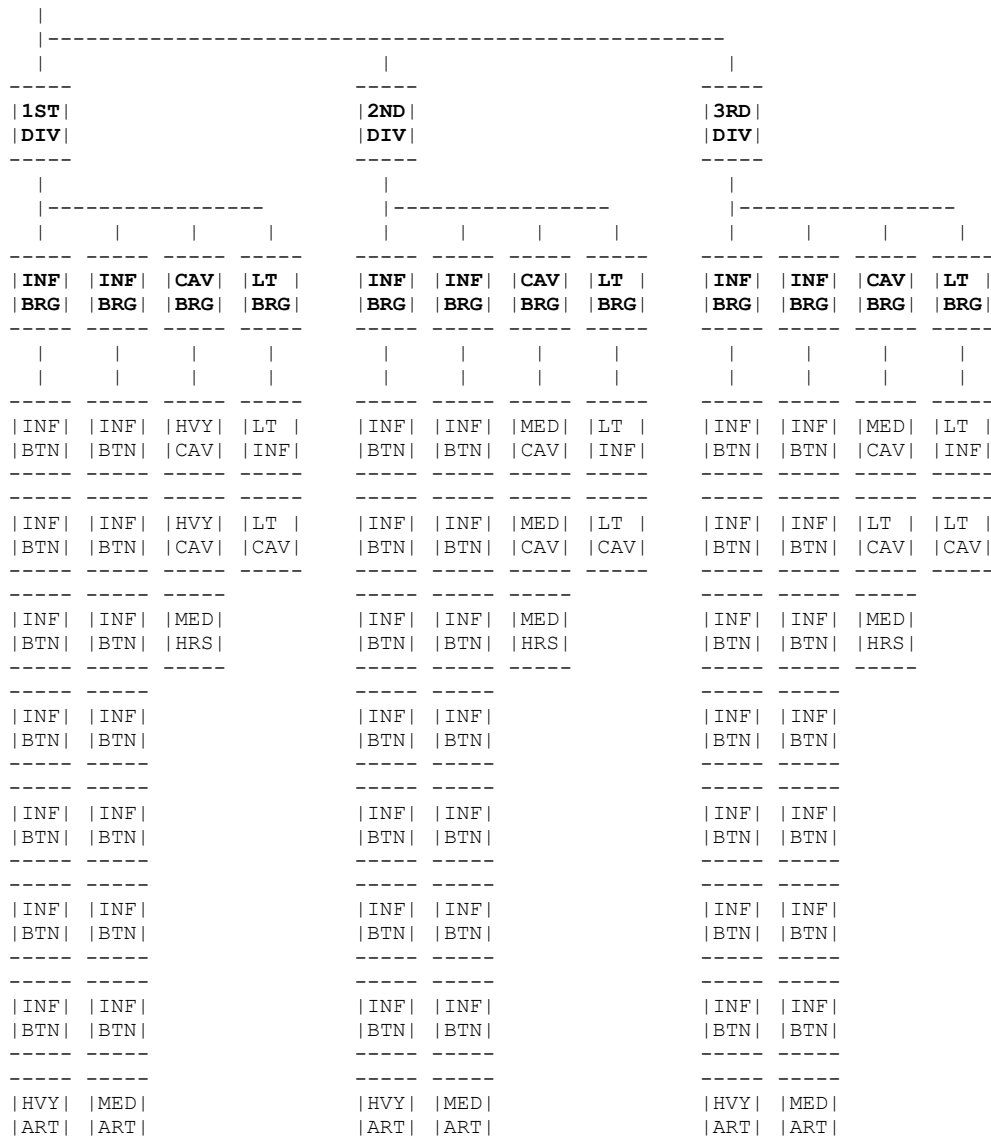
## Light Brigade:

- |                    |                                   |
|--------------------|-----------------------------------|
| 1) Light Infantry  | Small Light Infantry, Skirmishers |
| 2) Light Infantry  | Small Light Infantry, Skirmishers |
| 3) Light Infantry  | Small Light Infantry, Skirmishers |
| 4) Hussars         | Small Light Cavalry               |
| 5) Horse Artillery | Light Horse Artillery, 3 Bases    |

**Units: Corps Reserve Artillery**

- |                   |                                |
|-------------------|--------------------------------|
| 1) Foot Artillery | Medium Foot Artillery, 3 Bases |
| 2) Foot Artillery | Medium Foot Artillery, 3 Bases |
| 3) Foot Artillery | Medium Foot Artillery, 3 Bases |
| 4) Foot Artillery | Medium Foot Artillery, 3 Bases |
| 5) Foot Artillery | Medium Foot Artillery, 3 Bases |

-----  
 | THE REGULATION PRUSSIAN CORPS PRE-1812 | Regulation Corps  
 -----



**Summary:**  
 45 Infantry Battalions  
 9 Cavalry Regiments  
 9 Artillery Batteries

**THE REGULATION PRUSSIAN CORPS PRE-1812:**

**Units: 1st Brigade (Division)**

- Infantry Brigade:
- 1) Musketeers                      Standard Infantry
  - 2) Musketeers                      Standard Infantry
  - 3) Musketeers                      Standard Infantry
  - 4) Musketeers                      Standard Infantry
  - 5) Musketeers                      Standard Infantry
  - 6) Musketeers                      Standard Infantry
  - 7) Grenadiers                      Standard Infantry, Reliable, Elite +5
  - 8) Foot Artillery                    Heavy Foot Artillery, 4 Bases

- Infantry Brigade:
- 9) Musketeers                      Standard Infantry
  - 10) Musketeers                      Standard Infantry
  - 11) Musketeers                      Standard Infantry
  - 12) Musketeers                      Standard Infantry
  - 13) Musketeers                      Standard Infantry
  - 14) Musketeers                      Standard Infantry
  - 15) Grenadiers                      Standard Infantry, Reliable, Elite +5
  - 16) Foot Artillery                    Medium Foot Artillery, 4 Bases

Black Powder Army Guidelines

## Attached Cavalry Brigade:

- |                     |   |
|---------------------|---|
| 17) Cuirassiers     | Standard Heavy Cavalry, Reliable, Heavy Cavalry +D3 |
| 18) Cuirassiers     | Standard Heavy Cavalry, Reliable, Heavy Cavalry +D3 |
| 19) Horse Artillery | Medium Horse Artillery, 4 Bases                     |

## Light Brigade:

- |             |  |
|-------------|--|
| 20) Jager   | Standard Light Infantry, Skirmishers, Reliable, Elite +5 |
| 21) Hussars | Standard Light Cavalry, Marauders                        |

**Units: 2nd Brigade (Division)**

## Infantry Brigade:

- |                   |                               |
|-------------------|-------------------------------|
| 1) Musketeers     | Standard Infantry             |
| 2) Musketeers     | Standard Infantry             |
| 3) Musketeers     | Standard Infantry             |
| 4) Musketeers     | Standard Infantry             |
| 5) Musketeers     | Standard Infantry             |
| 6) Musketeers     | Standard Infantry             |
| 7) Grenadiers     | Standard Infantry             |
| 8) Foot Artillery | Heavy Foot Artillery, 4 Bases |

## Infantry Brigade:

- |                    |                                |
|--------------------|--------------------------------|
| 9) Musketeers      | Standard Infantry              |
| 10) Musketeers     | Standard Infantry              |
| 11) Musketeers     | Standard Infantry              |
| 12) Musketeers     | Standard Infantry              |
| 13) Musketeers     | Standard Infantry              |
| 14) Musketeers     | Standard Infantry              |
| 15) Grenadiers     | Standard Infantry              |
| 16) Foot Artillery | Medium Foot Artillery, 4 Bases |

## Attached Cavalry Brigade:

- |                     |  |
|---------------------|--|
| 17) Dragoons        | Standard Medium Cavalry, Heavy Cavalry+1 |
| 18) Dragoons        | Standard Medium Cavalry, Heavy Cavalry+1 |
| 19) Horse Artillery | Medium Horse Artillery, 4 Bases          |

## Light Brigade:

- |             |  |
|-------------|--|
| 20) Jager   | Standard Light Infantry, Skirmishers, Reliable, Elite +5 |
| 21) Hussars | Standard Light Cavalry, Marauders                        |

**Units: 3rd Brigade (Division)**

## Infantry Brigade:

- |                   |                                       |
|-------------------|---------------------------------------|
| 1) Musketeers     | Standard Infantry                     |
| 2) Musketeers     | Standard Infantry                     |
| 3) Musketeers     | Standard Infantry                     |
| 4) Musketeers     | Standard Infantry                     |
| 5) Musketeers     | Standard Infantry                     |
| 6) Musketeers     | Standard Infantry                     |
| 7) Grenadiers     | Standard Infantry, Reliable, Elite +5 |
| 8) Foot Artillery | Heavy Foot Artillery, 4 Bases         |

## Infantry Brigade:

- |                    |                                       |
|--------------------|---------------------------------------|
| 9) Musketeers      | Standard Infantry                     |
| 10) Musketeers     | Standard Infantry                     |
| 11) Musketeers     | Standard Infantry                     |
| 12) Musketeers     | Standard Infantry                     |
| 13) Musketeers     | Standard Infantry                     |
| 14) Musketeers     | Standard Infantry                     |
| 15) Grenadiers     | Standard Infantry, Reliable, Elite +5 |
| 16) Foot Artillery | Medium Foot Artillery, 4 Bases        |

## Attached Cavalry Brigade:

- |                     |  |
|---------------------|--|
| 17) Dragoons        | Standard Medium Cavalry, Heavy Cavalry+1 |
| 18) Uhlan           | Standard Light Cavalry, Lancers          |
| 19) Horse Artillery | Medium Horse Artillery, 4 Bases          |

## Light Brigade:

- |               |                                      |
|---------------|--------------------------------------|
| 20) Fusiliers | Standard Light Infantry, Skirmishers |
| 21) Hussars   | Standard Light Cavalry, Marauders    |

-----  
 | THE REGULATION PRUSSIAN CORPS 1812-1815 | Regulation Corps  
 -----

1ST DIV			2ND DIV			3RD DIV			
INF	INF	CAV	INF	INF	CAV	INF	INF	CAV	RES
BRG	BRG	BRG	BRG	BRG	BRG	BRG	BRG	BRG	ART
INF	INF	MED	INF	INF	MED	INF	INF	LT	LT
BTN	BTN	CAV	BTN	BTN	CAV	BTN	BTN	CAV	ART
INF	INF	MED	INF	INF	MED	INF	INF	LT	MED
BTN	BTN	CAV	BTN	BTN	CAV	BTN	BTN	CAV	ART
INF	LT	MED	INF	INF	MED	INF	INF	MED	HVY
BTN	INF	HRS	BTN	BTN	HRS	BTN	BTN	HRS	ART
INF	INF		INF	INF		INF	INF		
BTN	BTN		BTN	BTN		BTN	BTN		
INF	INF		INF	INF		INF	INF		
BTN	BTN		BTN	BTN		BTN	BTN		
INF	INF		INF	INF		INF	INF		
BTN	BTN		BTN	BTN		BTN	BTN		
INF	INF		INF	INF		INF	INF		
BTN	BTN		BTN	BTN		BTN	BTN		
MED			MED			MED			
ART			ART			ART			

**Summary:**

42 Infantry Battalions  
 6 Cavalry Regiments  
 9 Artillery Batteries

**THE REGULATION PRUSSIAN CORPS 1812-815:****Units: 1st Brigade (Division)****Infantry Brigade:**

- |                   |                                       |
|-------------------|---------------------------------------|
| 1) Line Infantry  | Standard Infantry                     |
| 2) Line Infantry  | Standard Infantry                     |
| 3) Fusiliers      | Standard Infantry                     |
| 4) Line Infantry  | Standard Infantry                     |
| 5) Line Infantry  | Standard Infantry                     |
| 6) Fusiliers      | Standard Infantry                     |
| 7) Grenadiers     | Standard Infantry, Reliable, Elite +5 |
| 8) Foot Artillery | Medium Foot Artillery, 4 Bases        |

**Infantry Brigade:**

- |                   |                                       |
|-------------------|---------------------------------------|
| 9) Line Infantry  | Standard Infantry                     |
| 10) Line Infantry | Standard Infantry                     |
| 11) Fusiliers     | Standard Infantry                     |
| 12) Line Infantry | Standard Infantry                     |
| 13) Line Infantry | Standard Infantry                     |
| 14) Fusiliers     | Standard Infantry                     |
| 15) Grenadiers    | Standard Infantry, Reliable, Elite +5 |

## Attached Cavalry Brigade:

- |                     |  |
|---------------------|--|
| 16) Cuirassiers     | Standard Medium Cavalry, Reliable, Heavy Cavalry +D3 |
| 17) Cuirassiers     | Standard Medium Cavalry, Reliable, Heavy Cavalry +D3 |
| 18) Horse Artillery | Medium Horse Artillery, 4 Bases                      |

**Units: 2<sup>nd</sup> Brigade (Division)**

## Infantry Brigade:

- |                   |                                       |
|-------------------|---------------------------------------|
| 1) Line Infantry  | Standard Infantry                     |
| 2) Line Infantry  | Standard Infantry                     |
| 3) Fusiliers      | Standard Infantry                     |
| 4) Line Infantry  | Standard Infantry                     |
| 5) Line Infantry  | Standard Infantry                     |
| 6) Fusiliers      | Standard Infantry                     |
| 7) Grenadiers     | Standard Infantry, Reliable, Elite +5 |
| 8) Foot Artillery | Heavy Foot Artillery, 4 Bases         |

## Infantry Brigade:

- |                   |                                       |
|-------------------|---------------------------------------|
| 9) Line Infantry  | Standard Infantry                     |
| 10) Line Infantry | Standard Infantry                     |
| 11) Fusiliers     | Standard Infantry                     |
| 12) Line Infantry | Standard Infantry                     |
| 13) Line Infantry | Standard Infantry                     |
| 14) Fusiliers     | Standard Infantry                     |
| 15) Grenadiers    | Standard Infantry, Reliable, Elite +5 |

## Attached Cavalry Brigade:

- |                     |   |
|---------------------|---|
| 16) Dragoons        | Standard Medium Cavalry, Heavy Cavalry +1 |
| 17) Dragoons        | Standard Medium Cavalry, Heavy Cavalry +1 |
| 18) Horse Artillery | Medium Horse Artillery, 4 Bases           |

**Units: 3<sup>rd</sup> Brigade (Division)**

## Infantry Brigade:

- |                   |                                       |
|-------------------|---------------------------------------|
| 1) Line Infantry  | Standard Infantry                     |
| 2) Line Infantry  | Standard Infantry                     |
| 3) Fusiliers      | Standard Infantry                     |
| 4) Line Infantry  | Standard Infantry                     |
| 5) Line Infantry  | Standard Infantry                     |
| 6) Fusiliers      | Standard Infantry                     |
| 7) Grenadiers     | Standard Infantry, Reliable, Elite +5 |
| 8) Foot Artillery | Medium Foot Artillery, 4 Bases        |

## Infantry Brigade:

- |                          |   |
|--------------------------|---|
| 9) Silesian Landwehr     | Small Infantry  |
| 10) Silesian Landwehr    | Small Infantry  |
| 11) Westphalian Landwehr | Small Infantry, Unreliable                                    |
| 12) Westphalian Landwehr | Small Infantry, Unreliable                                    |
| 13) Shutzen              | Small Light Infantry, Skirmishers, Rifle armed, Sharpshooters |
| 14) Guard Jager          | Small Light Infantry, Skirmishers                             |
| 15) Guard Grenadiers     | Standard Infantry, Reliable, Valiant, Elite +5                |

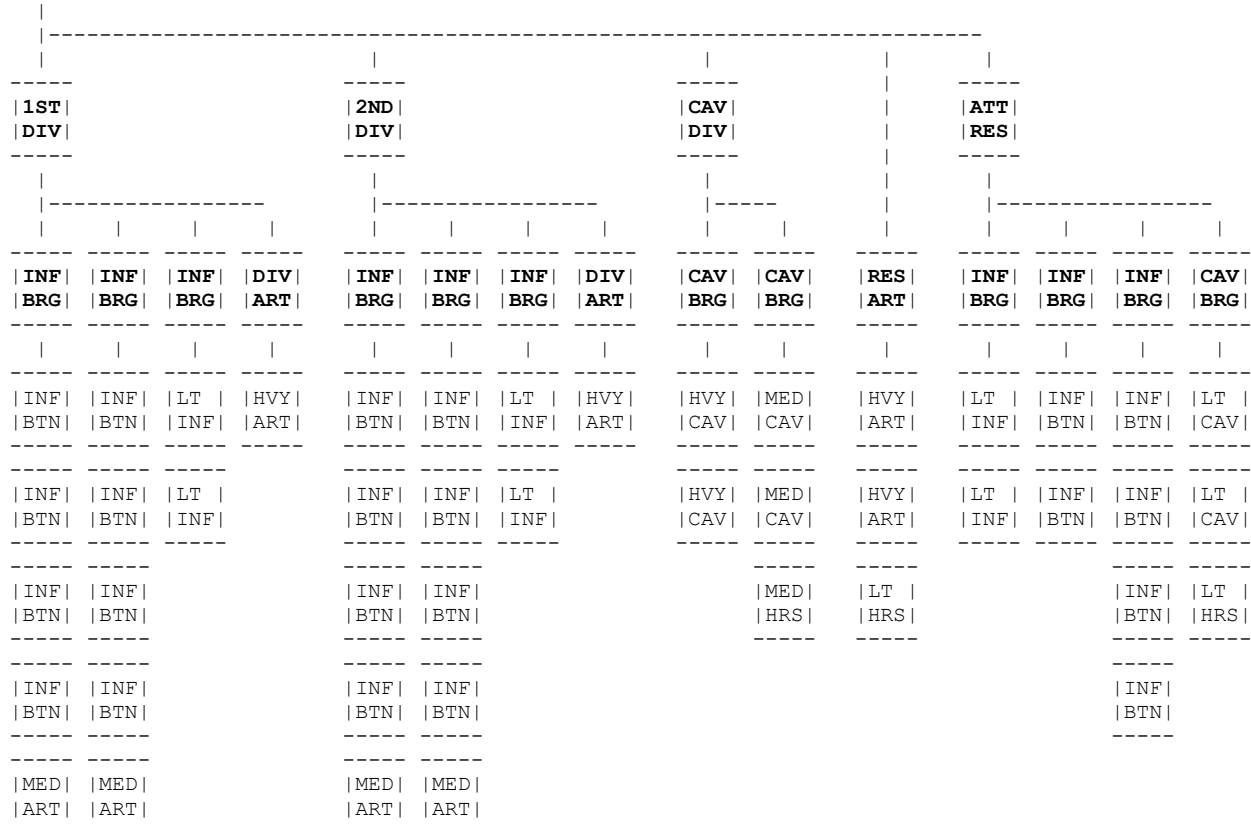
## Attached Cavalry Brigade:

- |                     |  |
|---------------------|--|
| 16) Hussars         | Standard Light Cavalry, Reliable, Marauders          |
| 17) Lancers         | Standard Light Cavalry, Lancers, Reliable, Marauders |
| 18) Horse Artillery | Medium Horse Artillery, 4 Bases                      |

**Units: Corps Reserve Artillery**

- |                   |                                |
|-------------------|--------------------------------|
| 1) Foot Artillery | Light Foot Artillery, 4 Bases  |
| 2) Foot Artillery | Medium Foot Artillery, 4 Bases |
| 3) Foot Artillery | Heavy Foot Artillery, 4 Bases  |

-----  
 | THE REGULATION RUSSIAN CORPS | Regulation Corps, see the notes.  
 -----



**Total:**  
 28 Battalions  
 6 Cavalry Regiments  
 11 Artillery Batteries

**THE REGULATION RUSSIAN CORPS:**

**Units: 1<sup>st</sup> Infantry Division**

- Infantry Brigade:  
 1) Musketeers                      Small Infantry  
 2) Musketeers                      Small Infantry  
 3) Musketeers                      Small Infantry  
 4) Musketeers                      Small Infantry  
 5) Foot Artillery                    Medium Foot Artillery, 6 Bases
- Infantry Brigade:  
 6) Musketeers                      Small Infantry  
 7) Musketeers                      Small Infantry  
 8) Musketeers                      Small Infantry  
 9) Musketeers                      Small Infantry  
 10) Foot Artillery                    Medium Foot Artillery, 6 Bases
- Infantry Brigade:  
 11) Jager                            Small Light Infantry, Skirmishers  
 12) Jager                            Small Light Infantry, Skirmishers
- Division Artillery:  
 13) Foot Artillery                    Heavy Foot Artillery, 6 Bases

**Units: 2<sup>nd</sup> Infantry Division**

- Infantry Brigade:  
 1) Musketeers                      Small Infantry  
 2) Musketeers                      Small Infantry  
 3) Musketeers                      Small Infantry  
 4) Musketeers                      Small Infantry  
 5) Foot Artillery                    Medium Foot Artillery, 6 Bases

Infantry Brigade:	
6) Musketeers	Small Infantry
7) Musketeers	Small Infantry
8) Musketeers	Small Infantry
9) Musketeers	Small Infantry
10) Foot Artillery	Medium Foot Artillery, 6 Bases
Infantry Brigade:	
11) Jager	Small Light Infantry, Skirmishers
12) Jager	Small Light Infantry, Skirmishers
Division Artillery:	
13) Foot Artillery	Heavy Foot Artillery, 6 Bases
<b>Units: Cavalry Division</b>	
Cavalry Brigade:	
1) Cuirassiers	Standard Heavy Cavalry, Reliable, Heavy Cavalry +D3
2) Dragoons	Small Medium Cavalry, Heavy Cavalry +1
Cavalry Brigade:	
3) Hussars	Standard Light Cavalry, Marauders
4) Uhlan	Standard Light Cavalry, Lancers, Marauders
5) Horse Artillery	Medium Horse Artillery, 6 Bases
<b>Units: Corps Reserve Artillery</b>	
1) Foot Artillery	Heavy Foot Artillery, 6 Bases
2) Foot Artillery	Heavy Foot Artillery, 6 Bases
3) Horse Artillery	Light Horse Artillery, 6 Bases
<b>Units: Attached Reserve Brigades</b>	
Infantry Brigade:	
1) Finland Guard Jager	Small Light Infantry, Skirmishers, Reliable, Elite +6
2) Finland Jager	Small Light Infantry, Skirmishers, Reliable, Elite +6
Infantry Brigade:	
3) Converged Grenadiers	Small Infantry, Elite +5
4) Converged Grenadiers	Small Infantry, Elite +5
Infantry Brigade:	
5) Opolchenie (Militia)	Small Infantry, Unreliable
6) Opolchenie (Militia)	Small Infantry, Unreliable
7) Opolchenie (Militia)	Small Infantry, Unreliable
8) Opolchenie (Militia)	Small Infantry, Unreliable
Cavalry Brigade:	
9) Cossacks	Small Light Cavalry, Unreliable, Marauders
10) Cossacks	Small Light Cavalry, Unreliable, Marauders
11) Cossack Flying Battery	Light Horse Artillery, 4 Bases

**NOTES:**

The Russians normally operated with a corps of two divisions. Each division was rather small usually consisting of three Brigades – two brigades were almost invariably line infantry and the other brigade was normally light infantry. Any cavalry available at the time was deployed either into a separate Cavalry Division or attached to an infantry division. Even then there were always exceptions.

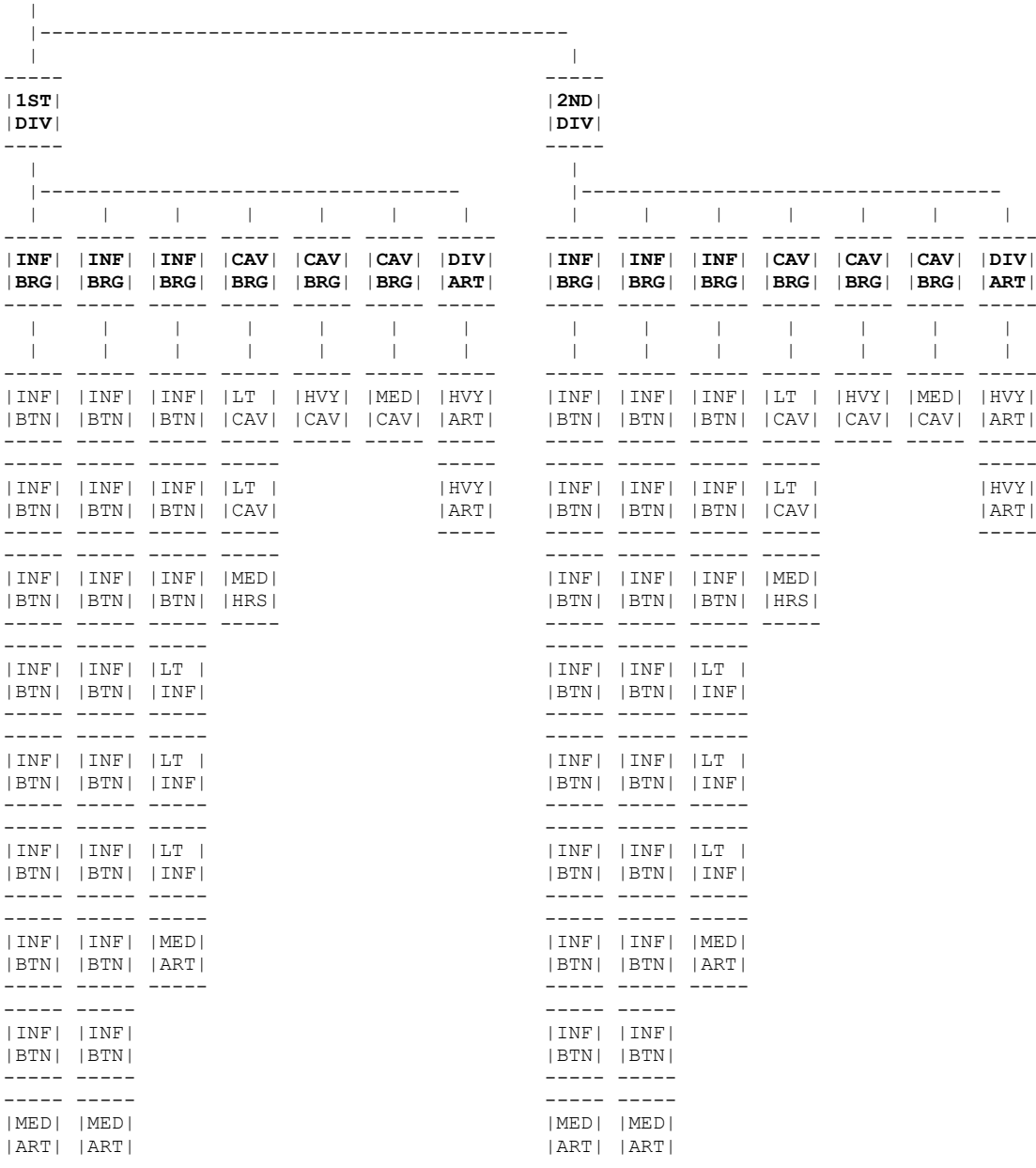
The “Regulation Corps” shown above is typical of a Russian corps with some troops attached to bring the strength up to par with other nationalities. For game purposes, this corps is deemed to be the Russian regulation corps.

**Special rules for Cossacks:**

Cossack units must end their movement **within 18”** of a Russian commander (any commander). They may move further away during movement but must be within 18” of a Russian commander at the end of their movement unless they are engaged in hand-to-hand combat. If they can’t do this then they simply run away and are removed from play.



-----  
 | A RUSSIAN CORPS c1806 | Historic Corps  
 -----



**Summary:**

- 44 Battalions
- 8 Cavalry Regiments
- 12 Artillery Batteries

**A RUSSIAN CORPS c1806:**

**Units: 1<sup>st</sup> Division**

Infantry Brigade:

- |                   |                                |
|-------------------|--------------------------------|
| 1) Musketeers     | Standard Infantry              |
| 2) Musketeers     | Standard Infantry              |
| 3) Grenadiers     | Small Infantry                 |
| 4) Grenadiers     | Small Infantry                 |
| 5) Musketeers     | Standard Infantry              |
| 6) Musketeers     | Standard Infantry              |
| 7) Grenadiers     | Small Infantry                 |
| 8) Grenadiers     | Small Infantry                 |
| 9) Foot Artillery | Medium Foot Artillery, 6 Bases |

## Infantry Brigade:

10) Musketeers	Standard Infantry
11) Musketeers	Standard Infantry
12) Grenadiers	Small Infantry
13) Grenadiers	Small Infantry
14) Musketeers	Standard Infantry
15) Musketeers	Standard Infantry
16) Grenadiers	Small Infantry
17) Grenadiers	Small Infantry
18) Foot Artillery	Medium Foot Artillery, 6 Bases

## Infantry Brigade:

19) Grenadiers	Small Infantry
20) Grenadiers	Small Infantry
21) Fusiliers	Small Infantry
22) Fusiliers	Small Infantry
23) Jager	Small Light Infantry, Skirmishers
24) Jager	Small Light Infantry, Skirmishers
25) Foot Artillery	Medium Foot Artillery, 6 Bases

## Attached Cavalry Brigade:

26) Uhlán	Large Light Cavalry, Lancers, Marauders
27) Hussars	Large Light Cavalry, Reliable, Marauders
28) Horse Artillery	Medium Horse Artillery, 4 Bases

## Attached Cavalry Brigade:

29) Cuirassiers	Small Heavy Cavalry, Reliable, Heavy Cavalry +D3
-----------------	--

## Attached Cavalry Brigade:

30) Dragoons	Small Medium Cavalry, Heavy Cavalry +1
--------------	--

## Division Artillery:

31) Foot Artillery	Heavy Foot Artillery, 6 Bases
32) Foot Artillery	Heavy Foot Artillery, 6 Bases

**Units: 2<sup>nd</sup> Division**

## Infantry Brigade:

1) Musketeers	Standard Infantry
2) Musketeers	Standard Infantry
3) Grenadiers	Small Infantry
4) Grenadiers	Small Infantry
5) Musketeers	Standard Infantry
6) Musketeers	Standard Infantry
7) Grenadiers	Small Infantry
8) Grenadiers	Small Infantry
9) Foot Artillery	Medium Foot Artillery, 6 Bases

## Infantry Brigade:

10) Musketeers	Standard Infantry
11) Musketeers	Standard Infantry
12) Grenadiers	Small Infantry
13) Grenadiers	Small Infantry
14) Musketeers	Standard Infantry
15) Musketeers	Standard Infantry
16) Grenadiers	Small Infantry
17) Grenadiers	Small Infantry
18) Foot Artillery	Medium Foot Artillery, 6 Bases

## Guard Infantry Brigade:

19) Guard Grenadiers	Standard Infantry, Skirmishers, Reliable, Valiant, Elite 4+
20) Pavlov Grenadiers	Standard Infantry, Skirmishers, Reliable, Valiant, Elite 4+
21) Fusiliers	Small Infantry
22) Fusiliers	Small Infantry
23) Jager	Small Light Infantry, Skirmishers
24) Jager	Small Light Infantry, Skirmishers
25) Foot Artillery	Medium Foot Artillery, 6 Bases

## Attached Cavalry Brigade:

26) Chasseurs	Small Light Cavalry, Marauders
27) Hussars	Standard Light Cavalry, Reliable, Marauders
28) Horse Artillery	Medium Horse Artillery, 4 Bases

## Attached Cavalry Brigade:

29) Cuirassiers	Small Heavy Cavalry, Reliable, Heavy Cavalry +D3
-----------------	--

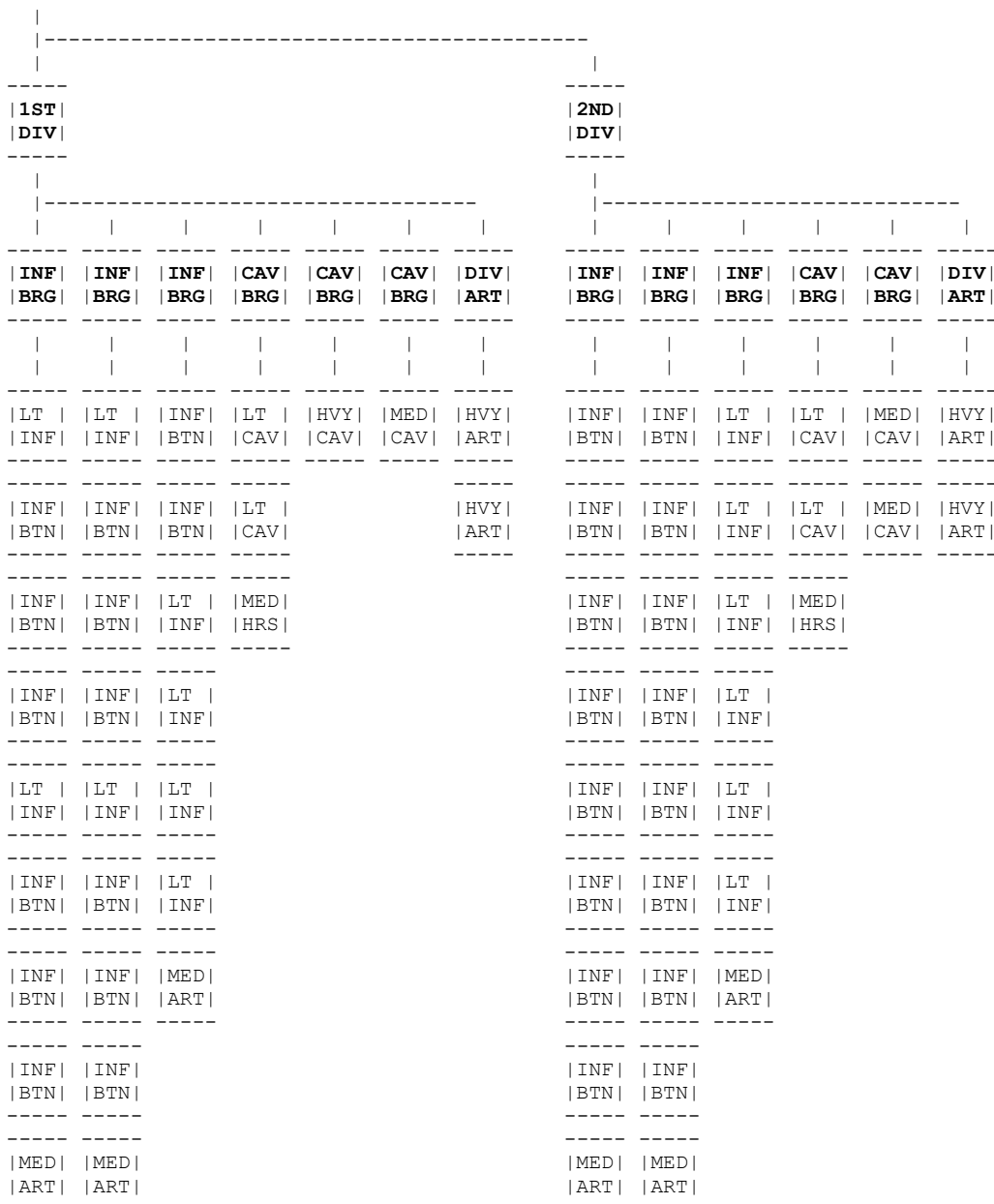
## Attached Cavalry Brigade:

30) Dragoons	Small Medium Cavalry, Heavy Cavalry +1
--------------	--

Division Artillery:  
31) Foot Artillery  
32) Foot Artillery

Heavy Foot Artillery, 6 Stands  
Heavy Foot Artillery, 6 Stands

-----  
 | A RUSSIAN CORPS c1811 | Historic Corps  
 -----



**Summary:**

- 44 Battalions
- 8 Cavalry Regiments
- 12 Artillery Batteries

**A RUSSIAN CORPS c1811:**

**Units: 1<sup>st</sup> Division**

Infantry Brigade:

- |                   |                                |
|-------------------|--------------------------------|
| 1) Line Infantry  | Small Infantry                 |
| 2) Line Infantry  | Small Infantry                 |
| 3) Line Infantry  | Small Infantry                 |
| 4) Line Infantry  | Small Infantry                 |
| 5) Line Infantry  | Small Infantry                 |
| 6) Line Infantry  | Small Infantry                 |
| 7) Line Infantry  | Small Infantry                 |
| 8) Line Infantry  | Small Infantry                 |
| 9) Foot Artillery | Medium Foot Artillery, 6 Bases |

## Infantry Brigade:

10) Line Infantry	Small Infantry
11) Line Infantry	Small Infantry
12) Line Infantry	Small Infantry
13) Line Infantry	Small Infantry
14) Line Infantry	Small Infantry
15) Line Infantry	Small Infantry
16) Line Infantry	Small Infantry
17) Line Infantry	Small Infantry
18) Foot Artillery	Medium Foot Artillery, 6 Bases

## Guard Infantry Brigade:

19) Guard Grenadiers	Standard Infantry, Reliable, Elite 4+
20) Guard Grenadiers	Standard Infantry, Reliable, Elite 4+
21) Guard Light Infantry	Standard Light Infantry, Skirmishers, Reliable, Elite 4+
22) Jager	Small Light Infantry, Skirmishers
23) Jager	Small Light Infantry, Skirmishers
24) Jager	Small Light Infantry, Skirmishers
25) Guard Foot Artillery	Medium Foot Artillery, 6 Bases, Reliable

## Attached Cavalry Brigade:

26) Uhlán	Large Light Cavalry, Lancers, Marauders
27) Hussars	Large Light Cavalry, Reliable, Marauders
28) Horse Artillery	Medium Horse Artillery, 4 Bases

## Attached Cavalry Brigade:

29) Cuirassiers	Small Heavy Cavalry, Reliable, Heavy Cavalry +D3
-----------------	--

## Attached Cavalry Brigade:

30) Guard Dragoons	Standard Medium Cavalry, Reliable, Heavy Cavalry +1
--------------------	---

## Division Artillery:

31) Foot Artillery	Heavy Foot Artillery, 6 Bases
32) Foot Artillery	Heavy Foot Artillery, 6 Bases

**Units: 2<sup>nd</sup> Division**

## Infantry Brigade:

1) Line Infantry	Small Infantry
2) Line Infantry	Small Infantry
3) Line Infantry	Small Infantry
4) Line Infantry	Small Infantry
5) Line Infantry	Small Infantry
6) Line Infantry	Small Infantry
7) Line Infantry	Small Infantry
8) Line Infantry	Small Infantry
9) Foot Artillery	Medium Foot Artillery, 6 Bases

## Infantry Brigade:

10) Line Infantry	Small Infantry
11) Line Infantry	Small Infantry
12) Line Infantry	Small Infantry
13) Line Infantry	Small Infantry
14) Line Infantry	Small Infantry
15) Line Infantry	Small Infantry
16) Line Infantry	Small Infantry
17) Line Infantry	Small Infantry
18) Foot Artillery	Medium Foot Artillery, 6 Bases

## Infantry Brigade:

19) Converged Grenadiers	Small Light Infantry, Reliable, Elite 5+
20) Converged Grenadiers	Small Light Infantry, Reliable, Elite 5+
21) Converged Grenadiers	Small Light Infantry, Reliable, Elite 5+
22) Jager	Small Light Infantry, Skirmishers
23) Jager	Small Light Infantry, Skirmishers
24) Jager	Small Light Infantry, Skirmishers
25) Foot Artillery	Medium Foot Artillery, 6 Bases

## Attached Cavalry Brigade:

26) Chasseurs	Small Light Cavalry, Marauders
27) Hussars	Large Light Cavalry, Reliable, Marauders
28) Horse Artillery	Medium Horse Artillery, 4 Bases

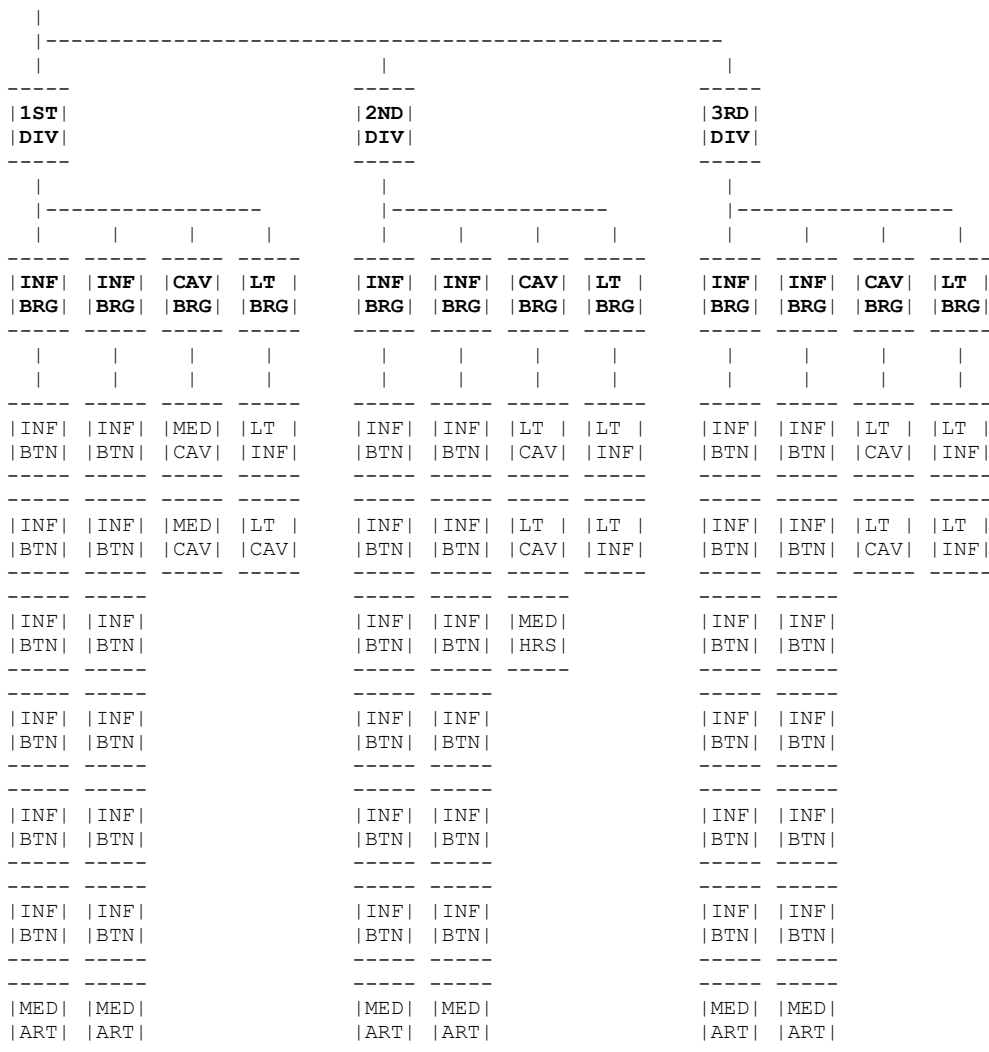
## Attached Cavalry Brigade:

29) Dragoons	Small Medium Cavalry, Heavy Cavalry +1
30) Dragoons	Small Medium Cavalry, Heavy Cavalry +1

Division Artillery:  
31) Foot Artillery  
32) Foot Artillery

Heavy Foot Artillery, 6 Bases  
Heavy Foot Artillery, 6 Bases

-----  
 | THE KINGDOM OF SAXONY c1806 | Hypothetical Corps  
 -----



**Summary:**  
 41 Infantry Battalions  
 7 Cavalry Regiments  
 7 Artillery Batteries

**THE KINGDOM OF SAXONY c1806:**

**Units: 1<sup>st</sup> Division**

Infantry Brigade:

- |                   |                                |
|-------------------|--------------------------------|
| 1) Line Infantry  | Standard Infantry              |
| 2) Line Infantry  | Standard Infantry              |
| 3) Line Infantry  | Standard Infantry              |
| 4) Line Infantry  | Standard Infantry              |
| 5) Grenadiers     | Standard Infantry              |
| 6) Grenadiers     | Standard Infantry              |
| 7) Foot Artillery | Medium Foot Artillery, 3 Bases |

Infantry Brigade:

- |                    |                                |
|--------------------|--------------------------------|
| 8) Line Infantry   | Standard Infantry              |
| 9) Line Infantry   | Standard Infantry              |
| 10) Line Infantry  | Standard Infantry              |
| 11) Line Infantry  | Standard Infantry              |
| 12) Grenadiers     | Standard Infantry              |
| 13) Grenadiers     | Standard Infantry              |
| 14) Foot Artillery | Medium Foot Artillery, 3 Bases |

Attached Cavalry Brigade:

- |                 |   |
|-----------------|---|
| 15) Carabineers | Standard Heavy Cavalry, Reliable, Heavy Cavalry +D3 |
| 16) Cuirassiers | Standard Heavy Cavalry, Reliable, Heavy Cavalry +D3 |

## Light Brigade:

- 17) Jager Standard Light Infantry, Skirmishers, Rifle armed, Sharpshooters  
 18) Hussars Standard Light Cavalry, Marauders

**Units: 2<sup>nd</sup> Division**

## Infantry Brigade:

- 1) Line Infantry Standard Infantry  
 2) Line Infantry Standard Infantry  
 3) Line Infantry Standard Infantry  
 4) Line Infantry Standard Infantry  
 5) Grenadiers Standard Infantry  
 6) Grenadiers Standard Infantry  
 7) Foot Artillery Medium Foot Artillery, 3 Bases

## Infantry Brigade:

- 8) Line Infantry Standard Infantry  
 9) Line Infantry Standard Infantry  
 10) Line Infantry Standard Infantry  
 11) Line Infantry Standard Infantry  
 12) Grenadiers Standard Infantry  
 13) Grenadiers Standard Infantry  
 14) Foot Artillery Medium Foot Artillery, 3 bases

## Attached Cavalry Brigade:

- 15) Chevauleger Standard Light Cavalry, Reliable, Marauders  
 16) Chevauleger Standard Light Cavalry, Reliable, Marauders  
 17) Horse Artillery Medium Horse Artillery, 3 bases

## Light Brigade:

- 18) Light Infantry Standard Light Infantry, Skirmishers  
 19) Light Infantry Standard Light Infantry, Skirmishers

**Units: 3<sup>rd</sup> Division**

## Infantry Brigade:

- 1) Line Infantry Standard Infantry  
 2) Line Infantry Standard Infantry  
 3) Line Infantry Standard Infantry  
 4) Line Infantry Standard Infantry  
 5) Grenadiers Standard Infantry  
 6) Grenadiers Standard Infantry  
 7) Foot Artillery Medium Foot Artillery, 3 Bases

## Infantry Brigade:

- 8) Line Infantry Standard Infantry  
 9) Line Infantry Standard Infantry  
 10) Line Infantry Standard Infantry  
 11) Line Infantry Standard Infantry  
 12) Guard Grenadiers Standard Infantry, Reliable, Elite 5+  
 13) Guard Standard Infantry, Reliable, Elite 5+  
 14) Foot Artillery Medium Foot Artillery, 3 Bases

## Attached Cavalry Brigade:

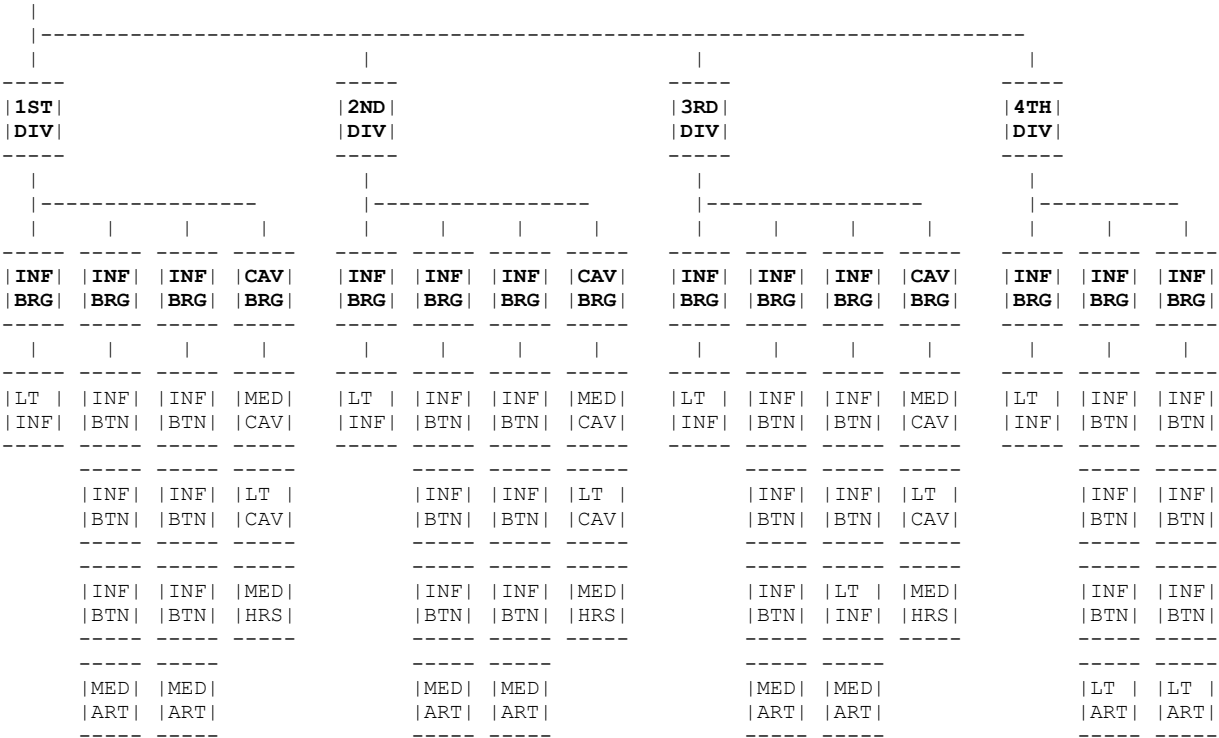
- 15) Hussars Standard Light Cavalry, Reliable, Marauders  
 16) Chevauleger Standard Light Cavalry, Reliable, Marauders

## Light Brigade:

- 17) Light Infantry Standard Light Infantry, Skirmishers  
 18) Light Infantry Standard Light Infantry, Skirmishers



-----  
| A SPANISH CORPS c1805 | Hypothetical Corps  
-----



**Summary:**  
 28 Battalions  
 6 Cavalry Regiments  
 11 Artillery Batteries

**A SPANISH CORPS c1805:**

**Units: 1<sup>st</sup> Division**  
 Light Infantry Brigade:  
 1) Light Infantry                      Small Light Infantry, Skirmishers

Infantry Brigade:  
 2) Line Infantry                      Small Infantry  
 3) Line Infantry                      Small Infantry  
 4) Line Infantry                      Small Infantry  
 5) Foot Artillery                      Medium Foot Artillery, 3 Bases

Infantry Brigade:  
 6) Line Infantry                      Small Infantry  
 7) Line Infantry                      Small Infantry  
 8) Line Infantry                      Small Infantry  
 9) Foot Artillery                      Medium Foot Artillery, 3 Bases

Attached Cavalry Brigade:  
 10) Dragoons                      Small Light Cavalry, Unreliable  
 11) Hussars                      Small Light Cavalry, Unreliable  
 12) Horse Artillery                      Medium Horse Artillery, 2 Bases

**Units: 2<sup>nd</sup> Division**  
 Light Infantry Brigade:  
 1) Light Infantry                      Small Light Infantry, Skirmishers

Infantry Brigade:  
 2) Line Infantry                      Small Infantry  
 3) Line Infantry                      Small Infantry  
 4) Line Infantry                      Small Infantry  
 5) Foot Artillery                      Medium Foot Artillery, 3 Bases

Infantry Brigade:  
 6) Line Infantry                      Small Infantry  
 7) Line Infantry                      Small Infantry  
 8) Line Infantry                      Small Infantry  
 9) Foot Artillery                      Medium Foot Artillery, 3 Bases

## Attached Cavalry Brigade:

- |                     |                                 |
|---------------------|---------------------------------|
| 10) Dragoons        | Small Light Cavalry             |
| 11) Chasseurs       | Small Light Cavalry, Unreliable |
| 12) Horse Artillery | Medium Horse Artillery, 2 Bases |

**Units: 3<sup>rd</sup> Division**

## Light Infantry Brigade:

- |                   |                                   |
|-------------------|-----------------------------------|
| 1) Light Infantry | Small Light Infantry, Skirmishers |
|-------------------|-----------------------------------|

## Guard Infantry Brigade:

- |                         |                                    |
|-------------------------|------------------------------------|
| 2) Guard Infantry       | Large Infantry, Reliable, Elite 6+ |
| 3) Converged Grenadiers | Small Infantry, Elite 6+           |
| 4) Converged Grenadiers | Small Infantry, Elite 6+           |
| 5) Foot Artillery       | Medium Foot Artillery, 3 Bases     |

## Infantry Brigade:

- |                   |  |
|-------------------|--|
| 6) Line Infantry  | Small Infantry                               |
| 7) Line Infantry  | Small Infantry                               |
| 8) Marines        | Tiny Light Infantry, Skirmishers, Unreliable |
| 9) Foot Artillery | Medium Foot Artillery, 3 Bases               |

## Attached Cavalry Brigade:

- |                      |  |
|----------------------|--|
| 10) Del Ray Dragoons | Small Light Cavalry, Marauders             |
| 11) Chasseurs        | Small Light Cavalry, Unreliable, Marauders |
| 12) Horse Artillery  | Medium Horse Artillery, 2 Bases            |

**Units: 4<sup>th</sup> Reserve Division**

## Light Infantry Brigade:

- |                   |                                   |
|-------------------|-----------------------------------|
| 1) Light Infantry | Small Light Infantry, Skirmishers |
|-------------------|-----------------------------------|

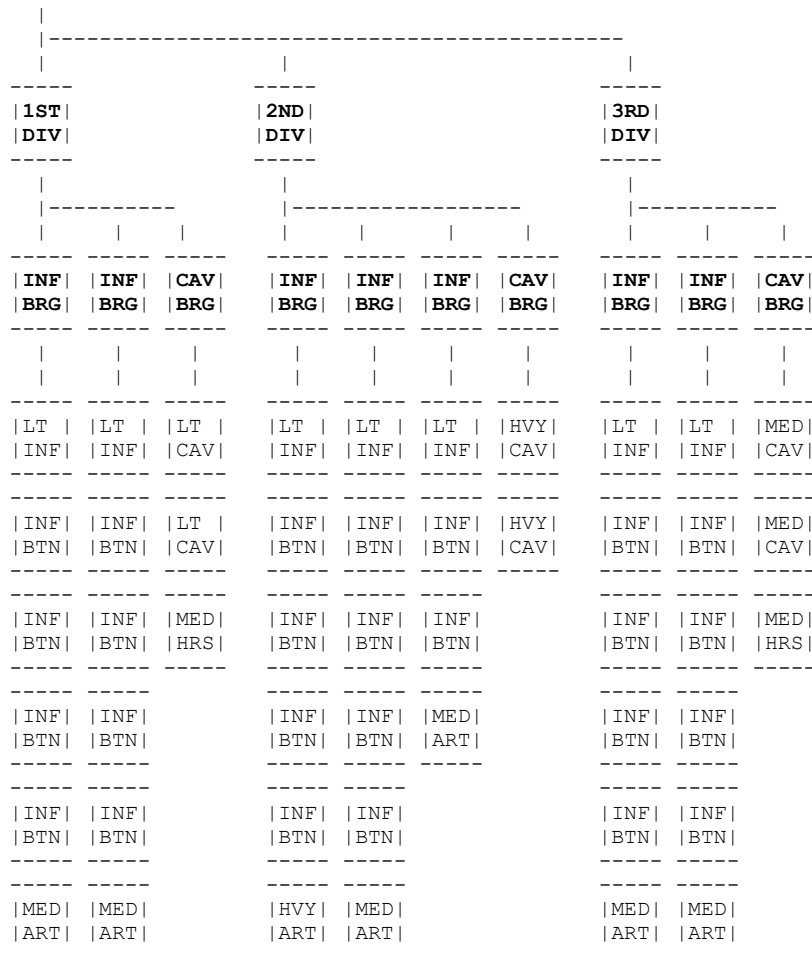
## Infantry Brigade:

- |                   |                               |
|-------------------|-------------------------------|
| 2) Line Infantry  | Small Infantry                |
| 3) Line Infantry  | Small Infantry                |
| 4) Line Infantry  | Small Infantry                |
| 5) Foot Artillery | Light Foot Artillery, 3 Bases |

## Infantry Brigade:

- |                   |                               |
|-------------------|-------------------------------|
| 6) Line Infantry  | Small Infantry, Unreliable    |
| 7) Line Infantry  | Small Infantry, Unreliable    |
| 8) Line Infantry  | Small Infantry, Unreliable    |
| 9) Foot Artillery | Light Foot Artillery, 3 Bases |

-----  
 | THE REGULATION SWEDISH CORPS PRE-1813 | Regulation Corps  
 -----



**Summary:**

- 33 Battalions
- 6 Cavalry Regiments
- 9 Artillery Batteries

**THE REGULATION SWEDISH CORPS PRE-1813:**

**Units: 1<sup>st</sup> Division**

Infantry Brigade:

- 1) Line Infantry                      Small Infantry
- 2) Line Infantry                      Small Infantry
- 3) Line Infantry                      Small Infantry
- 4) Line Infantry                      Small Infantry
- 5) Light Infantry                     Small Light Infantry, Skirmishers
- 6) Foot Artillery                     Medium Foot Artillery, 3 Bases

Infantry Brigade:

- 7) Indelta (Militia)                   Small Infantry
- 8) Indelta (Militia)                   Small Infantry
- 9) Indelta (Militia)                   Small Infantry
- 10) Indelta (Militia)                   Small Infantry
- 11) Light Infantry                    Small Light Infantry, Skirmishers
- 12) Foot Artillery                    Medium Foot Artillery, 3 Bases

Attached Cavalry Brigade:

- 13) Light Dragoons                    Standard Light Cavalry, Marauders
- 14) Hussars                            Standard Light Cavalry, Reliable, Marauders
- 15) Horse Artillery                    Medium Horse Artillery, 3 Bases

**Units: 2<sup>nd</sup> Division**

## Infantry Brigade:

- |                    |                                    |
|--------------------|------------------------------------|
| 1) Line Infantry   | Small Infantry                     |
| 2) Line Infantry   | Small Infantry                     |
| 3) Leib Grenadiers | Small Infantry, Reliable, Elite 5+ |
| 4) Leib Grenadiers | Small Infantry, Reliable, Elite 5+ |
| 5) Light Infantry  | Small Light Infantry, Skirmishers  |
| 6) Foot Artillery  | Heavy Foot Artillery, 3 Bases      |

## Infantry Brigade:

- |                     |                                    |
|---------------------|------------------------------------|
| 7) Line Infantry    | Small Infantry                     |
| 8) Line Infantry    | Small Infantry                     |
| 9) Leib Grenadiers  | Small Infantry, Reliable, Elite 5+ |
| 10) Leib Grenadiers | Small Infantry, Reliable, Elite 5+ |
| 11) Light Infantry  | Small Light Infantry, Skirmishers  |
| 12) Foot Artillery  | Medium Foot Artillery, 3 Bases     |

## Guard Infantry Brigade:

- |                          |  |
|--------------------------|--|
| 13) Foot Guard           | Standard Infantry, Reliable, Elite 4+                  |
| 14) Foot Guard           | Standard Infantry, Reliable, Elite 4+                  |
| 15) Guard Light Infantry | Small Light Infantry, Skirmishers, Reliable, Elite 4+, |
| 16) Guard Foot Artillery | Medium Foot Artillery, 3 Bases, Reliable               |

## Attached Cavalry Brigade:

- |                 |  |
|-----------------|--|
| 17) Carabineers | Standard Medium Cavalry, Reliable, Heavy Cavalry +D3 |
| 18) Cuirassiers | Standard Medium Cavalry, Reliable, Heavy Cavalry +D3 |

**Units: 3<sup>rd</sup> Division:**

## Infantry Brigade:

- |                      |                                   |
|----------------------|-----------------------------------|
| 1) Indelta (Militia) | Small Infantry                    |
| 2) Indelta (Militia) | Small Infantry                    |
| 3) Indelta (Militia) | Small Infantry                    |
| 4) Indelta (Militia) | Small Infantry                    |
| 5) Light Infantry    | Small Light Infantry, Skirmishers |
| 6) Foot Artillery    | Medium Foot Artillery, 3 Bases    |

## Infantry Brigade:

- |                    |                                |
|--------------------|--------------------------------|
| 7) Line Infantry   | Small Infantry                 |
| 8) Line Infantry   | Small Infantry                 |
| 9) Line Infantry   | Small Infantry                 |
| 10) Line Infantry  | Small Infantry                 |
| 11) Light Infantry | Small Light Infantry, Skirmish |
| 12) Foot Artillery | Medium Foot Artillery, 3 Bases |

## Attached Cavalry Brigade:

- |                     |  |
|---------------------|--|
| 13) Life Guards     | Standard Medium Cavalry, Reliable, Heavy Cavalry +D3 |
| 14) Dragoons        | Standard Medium Cavalry, Heavy Cavalry +1            |
| 15) Horse Artillery | Medium Horse Artillery, 3 Bases                      |

-----  
 | THE REGULATION SWEDISH CORPS 1813-1815 | Regulation Corps  
 -----

1ST		2ND		3RD		CAV		CAV			
DIV		DIV		DIV		DIV		DIV			
-----		-----		-----		-----		-----			
INF     INF		INF     INF		INF     INF		CAV     CAV		ATT     RES			
BRG     BRG		BRG     BRG		BRG     BRG		BRG     BRG		BRG     ART			
-----		-----		-----		-----		-----			
LT     LT		LT     LT		LT     LT		LT     MED		LT     HVY			
INF     INF		INF     INF		INF     INF		CAV     CAV		INF     ART			
-----		-----		-----		-----		-----			
INF     INF		INF     INF		INF     INF		LT     MED		INF			
BTN     BTN		BTN     BTN		BTN     BTN		CAV     CAV		BTN			
-----		-----		-----		-----		-----			
INF     INF		INF     INF		INF     INF		MED		INF			
BTN     BTN		BTN     BTN		BTN     BTN		HRS		BTN			
-----		-----		-----		-----		-----			
INF     INF		INF     INF		INF     INF				MED			
BTN     BTN		BTN     BTN		BTN     BTN				ART			
-----		-----		-----				-----			
INF     INF		INF     INF		INF     INF							
BTN     BTN		BTN     BTN		BTN     BTN							
-----		-----		-----							
MED     MED		MED     MED		MED     MED							
ART     ART		ART     ART		ART     ART							
-----		-----		-----							

**Summary:**

33 Battalions

4 Cavalry Regiments

9 Artillery Batteries

**THE REGULATION SWEDISH CORPS 1813-1815:****Units: 1<sup>st</sup> Infantry Division**

Infantry Brigade:

- |                   |                                   |
|-------------------|-----------------------------------|
| 1) Line Infantry  | Small Infantry                    |
| 2) Line Infantry  | Small Infantry                    |
| 3) Line Infantry  | Small Infantry                    |
| 4) Line Infantry  | Small Infantry                    |
| 5) Light Infantry | Small Light Infantry, Skirmishers |
| 6) Foot Artillery | Medium Foot Artillery, 3 Bases    |

Infantry Brigade:

- |                       |                                   |
|-----------------------|-----------------------------------|
| 7) Line Infantry      | Small Infantry                    |
| 8) Line Infantry      | Small Infantry                    |
| 9) Indelta (Militia)  | Small Infantry                    |
| 10) Indelta (Militia) | Small Infantry                    |
| 11) Jager             | Small Light Infantry, Skirmishers |
| 12) Foot Artillery    | Medium Foot Artillery, 3 Bases    |

**Units: 2<sup>nd</sup> Infantry Division**

Infantry Brigade:

- |                   |                                    |
|-------------------|------------------------------------|
| 1) Line Infantry  | Small Infantry                     |
| 2) Line Infantry  | Small Infantry                     |
| 3) Grenadiers     | Small Infantry, Reliable, Elite 5+ |
| 4) Grenadiers     | Small Infantry, Reliable, Elite 5+ |
| 5) Light Infantry | Small Light Infantry, Skirmishers  |
| 6) Foot Artillery | Medium Foot Artillery, 3 Bases     |

**Infantry Brigade:**

- |                    |                                   |
|--------------------|-----------------------------------|
| 7) Line Infantry   | Small Infantry                    |
| 8) Line Infantry   | Small Infantry                    |
| 9) Line Infantry   | Small Infantry                    |
| 10) Line Infantry  | Small Infantry                    |
| 11) Light Infantry | Small Light Infantry, Skirmishers |
| 12) Foot Artillery | Medium Foot Artillery, 3 Bases    |

**Units: 3<sup>rd</sup> Infantry Division****Infantry Brigade:**

- |                      |                                   |
|----------------------|-----------------------------------|
| 1) Indelta (Militia) | Small Infantry                    |
| 2) Indelta (Militia) | Small Infantry                    |
| 3) Indelta (Militia) | Small Infantry                    |
| 4) Indelta (Militia) | Small Infantry                    |
| 5) Jager             | Small Light Infantry, Skirmishers |
| 6) Foot Artillery    | Medium Foot Artillery, 3 Bases    |

**Infantry Brigade:**

- |                    |                                   |
|--------------------|-----------------------------------|
| 7) Line Infantry   | Small Infantry                    |
| 8) Line Infantry   | Small Infantry                    |
| 9) Line Infantry   | Small Infantry                    |
| 10) Line Infantry  | Small Infantry                    |
| 11) Light Infantry | Small Light Infantry, Skirmishers |
| 12) Foot Artillery | Medium Foot Artillery, 3 Bases    |

**Units: Light Cavalry Division****Cavalry Brigade:**

- |                    |   |
|--------------------|---|
| 1) Light Dragoons  | Standard Light Cavalry, Marauders           |
| 2) Hussars         | Standard Light Cavalry, Reliable, Marauders |
| 3) Horse Artillery | Medium Horse Artillery, 3 Bases             |

**Units: Heavy Cavalry Division****Cavalry Brigade:**

- |                |   |
|----------------|---|
| 1) Dragoons    | Standard Medium Cavalry, Heavy Cavalry +1         |
| 2) Cuirassiers | Small Medium Cavalry, Reliable, Heavy Cavalry +D3 |

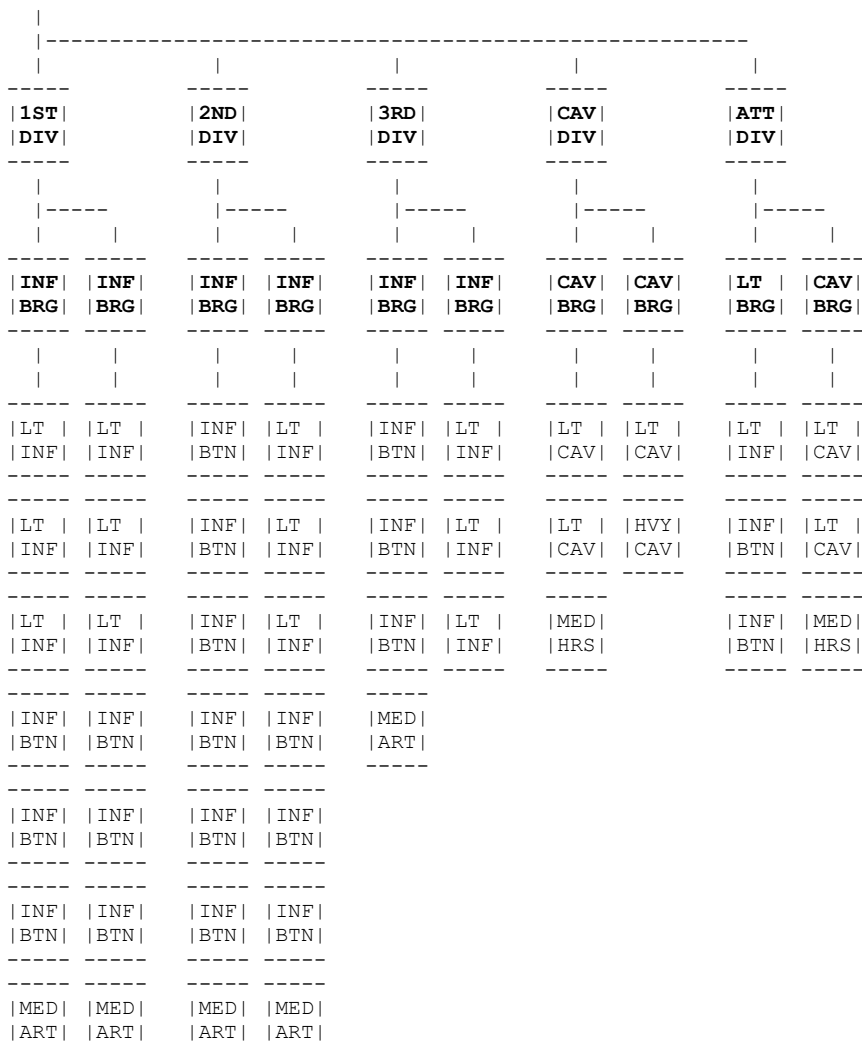
**Units: Corps Reserve Artillery**

- |                   |                               |
|-------------------|-------------------------------|
| 1) Foot Artillery | Heavy Foot Artillery, 3 Bases |
|-------------------|-------------------------------|

**Units: Attached Guard Infantry Brigade****Guard Infantry Brigade:**

- |                         |  |
|-------------------------|--|
| 1) Foot Guard           | Standard Infantry, Skirmishers, Reliable, Elite 4+       |
| 2) Leib Grenadiers      | Standard Infantry, Reliable, Elite 4+                    |
| 3) Guard Light Infantry | Standard Light Infantry, Skirmishers, Reliable, Elite 4+ |
| 4) Guard Foot Artillery | Medium Foot Artillery, 3 Bases, Reliable                 |

-----  
 | THE KINGDOM OF WESTPHALIA c1808 | Hypothetical Corps  
 -----



**Summary:**  
 33 Infantry Battalions  
 6 Cavalry Regiments  
 8 Artillery Batteries

**THE KINGDOM OF WESTPHALIA c1808:**

**Units: 1<sup>st</sup> Infantry Division**

Infantry Brigade:

- 1) Line Infantry                      Standard Infantry
- 2) Line Infantry                      Standard Infantry
- 3) Line Infantry                      Standard Infantry
- 4) Line Infantry                      Standard Infantry
- 5) Line Infantry                      Standard Infantry
- 6) Line Infantry                      Standard Infantry
- 7) Foot Artillery                      Medium Foot Artillery, 4 Bases

Infantry Brigade:

- 8) Light Infantry                      Standard Light Infantry, Skirmishers
- 9) Light Infantry                      Standard Light Infantry, Skirmishers
- 10) Light Infantry                      Standard Light Infantry, Skirmishers
- 11) Line Infantry                      Standard Infantry
- 12) Line Infantry                      Standard Infantry
- 13) Line Infantry                      Standard Infantry
- 14) Foot Artillery                      Medium Foot Artillery, 4 Bases

**Units: 2<sup>nd</sup> Infantry Division**

## Infantry Brigade:

- |                   |                                |
|-------------------|--------------------------------|
| 1) Line Infantry  | Standard Infantry              |
| 2) Line Infantry  | Standard Infantry              |
| 3) Line Infantry  | Standard Infantry              |
| 4) Line Infantry  | Standard Infantry              |
| 5) Line Infantry  | Standard Infantry              |
| 6) Line Infantry  | Standard Infantry              |
| 7) Foot Artillery | Medium Foot Artillery, 4 Bases |

## Infantry Brigade:

- |                    |                                      |
|--------------------|--------------------------------------|
| 8) Light Infantry  | Standard Light Infantry, Skirmishers |
| 9) Light Infantry  | Standard Light Infantry, Skirmishers |
| 10) Light Infantry | Standard Light Infantry, Skirmishers |
| 11) Line Infantry  | Standard Infantry                    |
| 12) Line Infantry  | Standard Infantry                    |
| 13) Line Infantry  | Standard Infantry                    |
| 14) Foot Artillery | Medium Foot Artillery, 4 Bases       |

**Units: 3<sup>rd</sup> Infantry Division**

## Infantry Brigade:

- |                   |                                |
|-------------------|--------------------------------|
| 1) Line Infantry  | Standard Infantry              |
| 2) Line Infantry  | Standard Infantry              |
| 3) Line Infantry  | Standard Infantry              |
| 4) Foot Artillery | Medium Foot Artillery, 3 Bases |

## Infantry Brigade:

- |                   |                                      |
|-------------------|--------------------------------------|
| 5) Jager          | Standard Light Infantry, Skirmishers |
| 6) Jager          | Standard Light Infantry, Skirmishers |
| 7) Jager          | Standard Light Infantry, Skirmishers |
| 8) Foot Artillery | Medium Foot Artillery, 3 Bases       |

**Units: Cavalry Division**

## Cavalry Brigade:

- |                    |  |
|--------------------|--|
| 1) Chevauleger     | Small Light Cavalry, Marauders           |
| 2) Hussars         | Small Light Cavalry, Reliable, Marauders |
| 3) Horse Artillery | Medium Horse Artillery, 3 Bases          |

## Cavalry Brigade:

- |                |  |
|----------------|--|
| 4) Cuirassiers | Small Heavy Cavalry, Reliable, Heavy Cavalry +D3 |
| 5) Cuirassiers | Small Heavy Cavalry, Reliable, Heavy Cavalry +D3 |

**Units: Attached Guard Division**

## Guard Infantry Brigade:

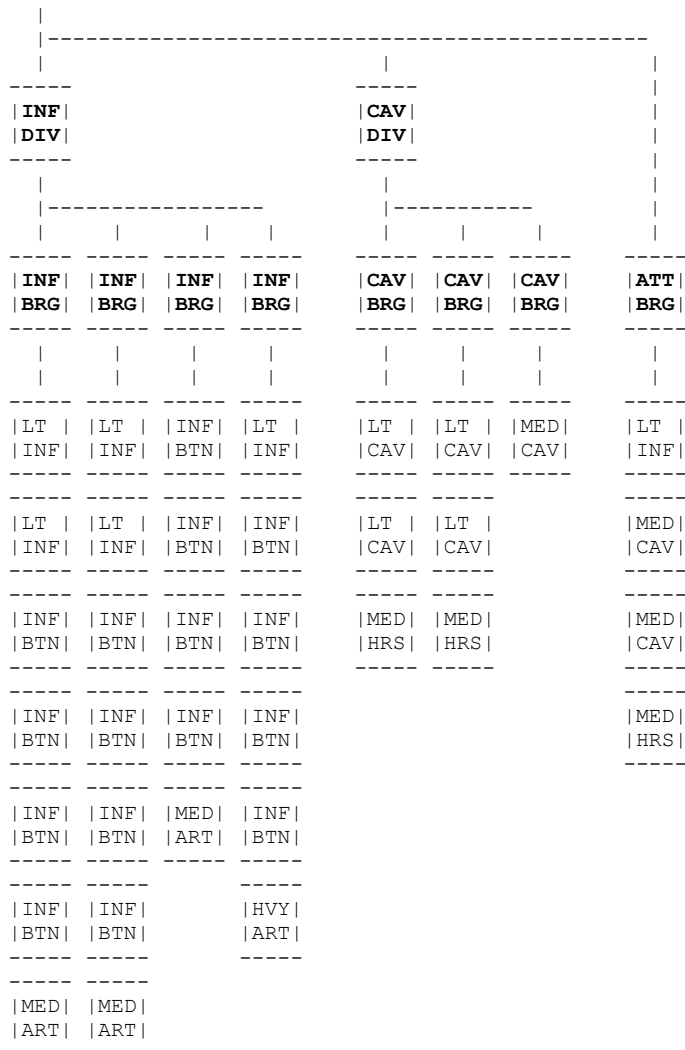
- |                     |  |
|---------------------|--|
| 1) Grenadier Guard  | Standard Infantry, Reliable, Elite 4+  |
| 2) Fusilier Guard   | Standard Infantry, Reliable, Elite 4+  |
| 3) Jager Carabineer | Standard Light Infantry, Skirmishers, Rifle armed, Sharpshooters, Reliable, Elite 4+ |

## Guard Cavalry Brigade:

- |                          |  |
|--------------------------|--|
| 4) Garde de Corps        | Small Heavy Cavalry, Reliable, Heavy Cavalry +D3 |
| 5) Garde Chevauleger     | Small Light Cavalry, Reliable                    |
| 6) Guard Horse Artillery | Medium Horse Artillery, 3 Bases, Reliable        |



-----  
 | THE KINGDOM OF WURTEMBERG c1812 | Hypothetical Corps  
 -----



**Summary:**  
 22 Infantry Battalions  
 7 Cavalry Regiments  
 7 Artillery Batteries

**THE KINGDOM OF WURTEMBERG c1812:**

**Units: Infantry Division**

Infantry Brigade:

- 1) Light Infantry                      Small Light Infantry, Skirmishers
- 2) Light Infantry                      Small Light Infantry, Skirmishers
- 3) Line Infantry                        Small Infantry
- 4) Line Infantry                        Small Infantry
- 5) Line Infantry                        Small Infantry
- 6) Line Infantry                        Small Infantry
- 7) Foot Artillery                        Medium Foot Artillery, 3 Bases

Infantry Brigade:

- 8) Light Infantry                      Small Light Infantry, Skirmishers
- 9) Light Infantry                      Small Light Infantry, Skirmishers
- 10) Line Infantry                       Small Infantry
- 11) Line Infantry                       Small Infantry
- 12) Line Infantry                       Small Infantry
- 13) Line Infantry                       Small Infantry
- 14) Foot Artillery                       Medium Foot Artillery, 3 Bases

## Infantry Brigade:

- |                    |                                |
|--------------------|--------------------------------|
| 15) Line Infantry  | Small Infantry                 |
| 16) Line Infantry  | Small Infantry                 |
| 17) Line Infantry  | Small Infantry                 |
| 18) Line Infantry  | Small Infantry                 |
| 19) Foot Artillery | Medium Foot Artillery, 3 Bases |

## Infantry Brigade:

- |                    |                                   |
|--------------------|-----------------------------------|
| 20) Light Infantry | Small Light Infantry, Skirmishers |
| 21) Line Infantry  | Small Infantry                    |
| 22) Line Infantry  | Small Infantry                    |
| 23) Line Infantry  | Small Infantry                    |
| 24) Line Infantry  | Small Infantry                    |
| 25) Foot Artillery | Heavy Foot Artillery, 3 Bases     |

**Units: Cavalry Division**

## Cavalry Brigade:

- |                    |                                 |
|--------------------|---------------------------------|
| 1) Chasseurs       | Small Light Cavalry, Marauders  |
| 2) Chasseurs       | Small Light Cavalry, Marauders  |
| 3) Horse Artillery | Medium Horse Artillery, 3 Bases |

## Cavalry Brigade:

- |                    |                                 |
|--------------------|---------------------------------|
| 4) Chevauleger     | Small Light Cavalry, Marauders  |
| 5) Chevauleger     | Small Light Cavalry, Marauders  |
| 6) Horse Artillery | Medium Horse Artillery, 3 Bases |

## Cavalry Brigade:

- |             |  |
|-------------|--|
| 7) Dragoons | Small Medium Cavalry, Heavy Cavalry +1 |
|-------------|--|

**Units: Attached Guard Brigade**

- |                          |  |
|--------------------------|--|
| 1) Lieb Guard            | Standard Infantry, Skirmishers, Reliable, Elite 5+ |
| 2) Dragoons              | Small Medium Cavalry, Heavy Cavalry +1             |
| 3) Dragoons              | Small Medium Cavalry, Heavy Cavalry +1             |
| 4) Guard Horse Artillery | Medium Horse Artillery, 3 Bases                    |

(Exodus 20:15 - "Thou shall not steal".)