

Aspern-Essling: 21-22 May 1809

The Austrian Army commanded by Archduke Charles

 | AUSTRIAN ADVANCED GUARD |
 | AT ASPERN-ESSLING | KLENAU

|

 |LT |
BRG

|

 |LT |
INF

|INF|
BTN

|INF|
BTN

|INF|
BTN

|LT |
CAV

|MED|
HRS

Summary:

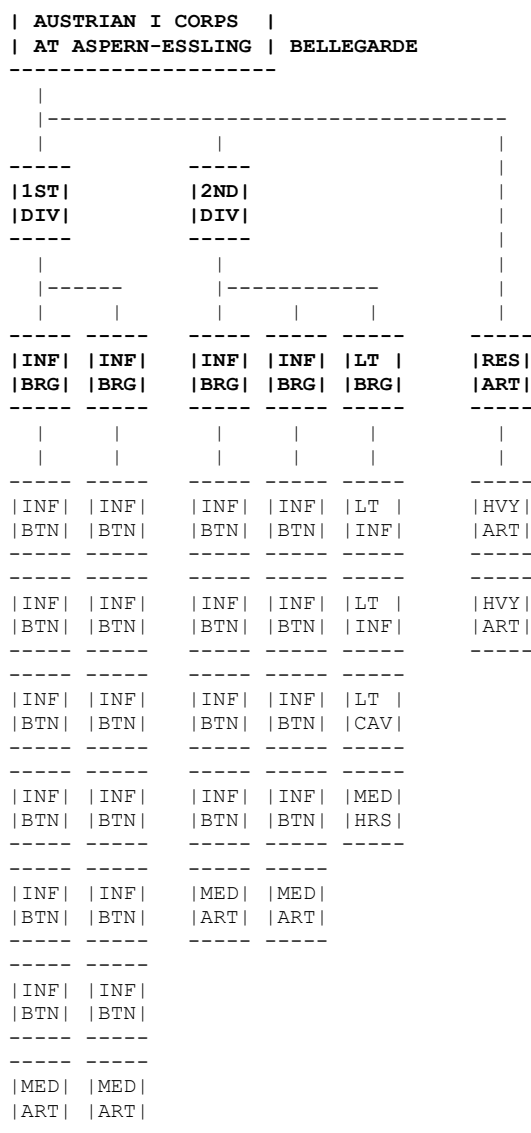
- 4 Infantry Battalions
- 1 Cavalry Regiment
- 1 Artillery Battery

AUSTRIAN ADVANCED GUARD at Aspern-Essling under Klenau

Units: Infantry Division

Light Brigade: Hardegg

- | | | |
|--------------------|-----------------|--------------------------------------------------------|
| 1) Jager | 1 st | Light, Strength = 8, QR = Veteran |
| 2) Line Infantry | 3/1 | Strength = 11, QR = Average |
| 3) Line Infantry | 3/2 | Strength = 11, QR = Average |
| 4) Line Infantry | 3/3 | Strength = 11, QR = Average |
| 5) Uhlan | 2 nd | Light Cavalry, Lance armed, Strength = 9, QR = Average |
| 6) Horse Artillery | | Medium Artillery, Strength = 3, QR = Average |



Summary:

- 22 Infantry Battalions
- 1 Cavalry Regiment
- 7 Artillery Batteries

AUSTRIAN I CORPS at Aspern-Essling under Bellegarde

Units: 1st Division: Dedovich

Infantry Brigade: Henneberg

- 1) Line Infantry 17/1 Strength = 11, QR = Average
- 2) Line Infantry 17/2 Strength = 11, QR = Average
- 3) Line Infantry 17/3 Strength = 11, QR = Average
- 4) Line Infantry 36/1 Strength = 10, QR = Average
- 5) Line Infantry 36/2 Strength = 10, QR = Average
- 6) Line Infantry 36/3 Strength = 10, QR = Average
- 7) Foot Artillery Medium Artillery, Strength = 4, QR = Average

Infantry Brigade: Wacquand

- 8) Line Infantry 11/1 Strength = 11, QR = Average
- 9) Line Infantry 11/2 Strength = 11, QR = Average
- 10) Line Infantry 11/3 Strength = 11, QR = Average
- 11) Line Infantry 47/1 Strength = 11, QR = Average
- 12) Line Infantry 47/2 Strength = 11, QR = Average
- 13) Line Infantry 47/3 Strength = 10, QR = Average
- 14) Foot Artillery Medium Artillery, Strength = 4, QR = Average

Units: 2nd Division: Fresnel

Infantry Brigade: Clary

- | | | |
|-------------------|------|----------------------------------------------|
| 1) Line Infantry | 10/1 | Strength = 10, QR = Average |
| 2) Line Infantry | 10/2 | Strength = 10, QR = Average |
| 3) Line Infantry | 42/1 | Strength = 11, QR = Average |
| 4) Line Infantry | 42/2 | Strength = 11, QR = Average |
| 5) Foot Artillery | | Medium Artillery, Strength = 4, QR = Average |

Infantry Brigade: Lutzel

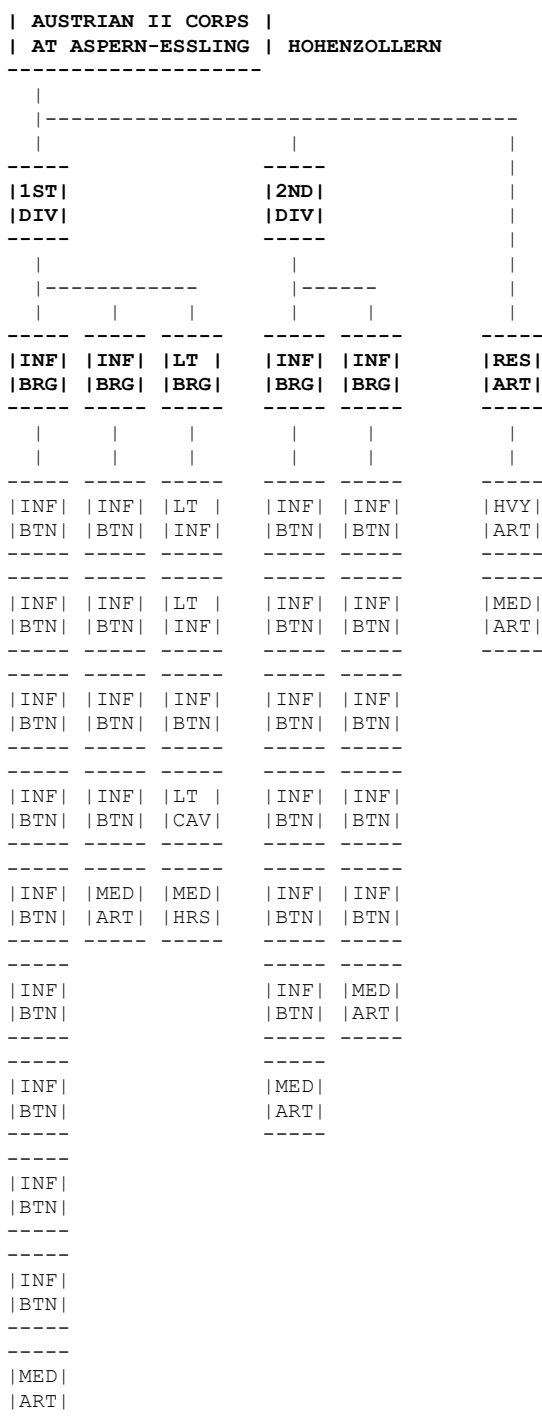
- | | | |
|--------------------------|-----------------|----------------------------------------------|
| 6) Line Infantry | 35/1 | Strength = 11, QR = Average |
| 7) Line Infantry | 35/2 | Strength = 11, QR = Average |
| 8) Line Infantry | 35/3 | Strength = 11, QR = Average |
| 9) Erzherzog Karl Legion | 4 th | Strength = 9, QR = Average |
| 10) Foot Artillery | | Medium Artillery, Strength = 4, QR = Average |

Light Brigade: Stutterheim

- | | | |
|---------------------|-----------------|----------------------------------------------|
| 11) Jager | 2 nd | Light, Strength = 9, QR = Veteran |
| 12) Jager | 3 rd | Light, Strength = 8, QR = Veteran |
| 13) Hussars | 6 th | Light Cavalry, Strength = 10, QR = Average |
| 14) Horse Artillery | | Medium Artillery, Strength = 3, QR = Average |

Units: Corps Reserve Artillery

- | | | |
|-------------------|--|----------------------------------------------|
| 1) Foot Artillery | | Heavy Artillery, Strength = 3, QR = Average |
| 2) Foot Artillery | | Medium Artillery, Strength = 3, QR = Average |



Summary:

- 27 Infantry Battalions
- 1 Cavalry Regiment
- 7 Artillery Batteries

AUSTRIAN II CORPS at Aspern-Essling under Hohenzollern**Units: 1st Division: von Ulm**

Infantry Brigade: Alstern

1) Line Infantry	21/1	Strength = 9, QR = Average
2) Line Infantry	21/2	Strength = 9, QR = Average
3) Line Infantry	21/1	Strength = 9, QR = Average
4) Line Infantry	18/1	Strength = 9, QR = Average
5) Line Infantry	18/2	Strength = 9, QR = Average
6) Line Infantry	18/3	Strength = 9, QR = Average
7) Line Infantry	28/1	Strength = 11, QR = Average
8) Line Infantry	28/2	Strength = 11, QR = Average
9) Line Infantry	28/3	Strength = 11, QR = Average
10) Foot Artillery		Medium Artillery, Strength = 4, QR = Average

Infantry Brigade: Wiedrunkel

11) Line Infantry	50/1	Strength = 5, QR = Average
12) Line Infantry	50/2	Strength = 5, QR = Average
13) Line Infantry	23/3	Strength = 7, QR = Average
14) Line Infantry	38/3	Strength = 8, QR = Average
15) Foot Artillery		Medium Artillery, Strength = 4, QR = Average

Light Brigade: Segenthall

16) Jager	7 th	Light, Strength = 5, QR = Veteran
17) Jager	8 th	Light, Strength = 5, QR = Veteran
18) Line Infantry	2/Arch	Strength = 6, QR = Average
19) Chevauleger	5 th	Light Cavalry, Strength = 10, QR = Average
20) Horse Artillery		Medium Artillery, Strength = 3, QR = Average

Units: 2nd Division: von Brady

Infantry Brigade: Paar

1) Line Infantry	54/1	Strength = 5, QR = Average
2) Line Infantry	54/2	Strength = 5, QR = Average
3) Line Infantry	54/3	Strength = 5, QR = Average
4) Line Infantry	25/1	Strength = 6, QR = Average
5) Line Infantry	25/2	Strength = 6, QR = Average
6) Line Infantry	25/3	Strength = 6, QR = Average
7) Foot Artillery		Medium Artillery, Strength = 4, QR = Average

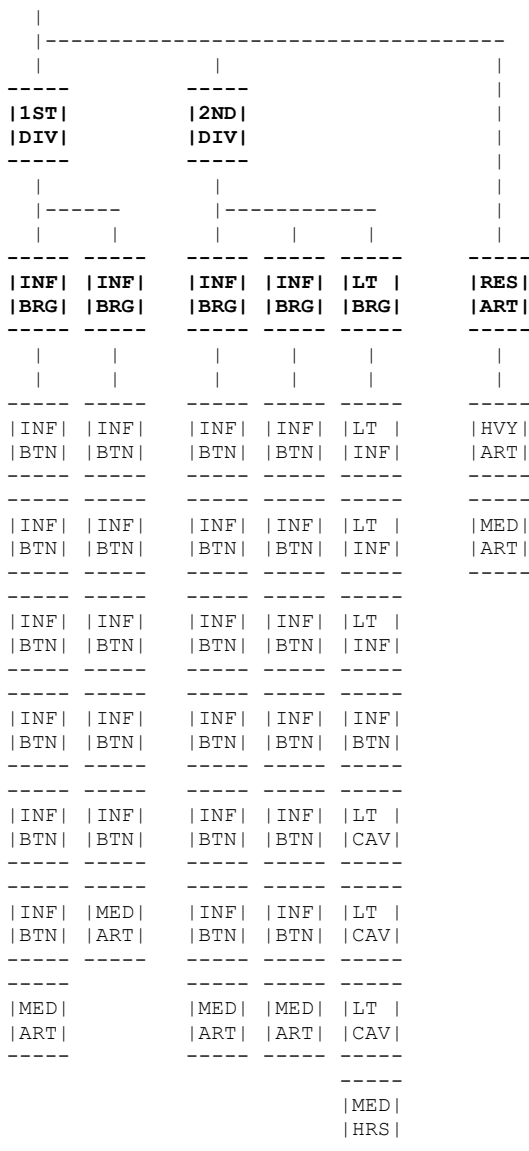
Infantry Brigade: Buresch

8) Line Infantry	57/1	Strength = 7, QR = Average
9) Line Infantry	57/2	Strength = 7, QR = Average
10) Line Infantry	57/3	Strength = 7, QR = Average
11) Line Infantry	15/1	Strength = 7, QR = Average
12) Line Infantry	15/2	Strength = 7, QR = Average
13) Foot Artillery		Medium Artillery, Strength = 4, QR = Average

Units: Corps Reserve Artillery

1) Foot Artillery		Heavy Artillery, Strength = 3, QR = Average
2) Foot Artillery		Medium Artillery, Strength = 3, QR = Average

 | AUSTRIAN IV CORPS |
 | AT ASPERN-ESSLING | ROSENBERG



Summary:

- 27 Infantry Battalions
- 3 Cavalry Regiment
- 7 Artillery Batteries

AUSTRIAN IV CORPS at Aspern-Essling under Rosenberg

Units: 1st Division: Bartenstein

Infantry Brigade: Hessen-Homberg

- 1) Line Infantry 2/1 Strength = 11, QR = Average
- 2) Line Infantry 2/2 Strength = 11, QR = Average
- 3) Line Infantry 2/3 Strength = 11, QR = Average
- 4) Line Infantry 33/1 Strength = 9, QR = Average
- 5) Line Infantry 33/2 Strength = 9, QR = Average
- 6) Line Infantry 33/2 Strength = 9, QR = Average
- 7) Foot Artillery Medium Artillery, Strength = 4, QR = Average

Infantry Brigade: Newshadter

- 8) Line Infantry 55/1 Strength = 4, QR = Average
- 9) Line Infantry 55/2 Strength = 4, QR = Average
- 10) Line Infantry 9/1 Strength = 7, QR = Average
- 11) Line Infantry 9/2 Strength = 7, QR = Average
- 12) Line Infantry 9/2 Strength = 7, QR = Average
- 13) Foot Artillery Medium Artillery, Strength = 4, QR = Average

Units: 2nd Division: Rohan

Infantry Brigade: Swineburne

1) Line Infantry	8/1	Strength = 8, QR = Average
2) Line Infantry	8/2	Strength = 8, QR = Average
3) Line Infantry	8/3	Strength = 8, QR = Average
4) Line Infantry	22/1	Strength = 8, QR = Average
5) Line Infantry	22/2	Strength = 8, QR = Average
6) Line Infantry	22/3	Strength = 8, QR = Average
7) Foot Artillery		Medium Artillery, Strength = 4, QR = Average

Infantry Brigade: Riese

8) Line Infantry	44/1	Strength = 6, QR = Average
9) Line Infantry	44/2	Strength = 6, QR = Average
10) Line Infantry	44/3	Strength = 6, QR = Average
11) Line Infantry	64/1	Strength = 5, QR = Average
12) Line Infantry	64/2	Strength = 5, QR = Average
13) Line Infantry	64/3	Strength = 5, QR = Average
14) Foot Artillery		Medium Artillery, Strength = 4, QR = Average

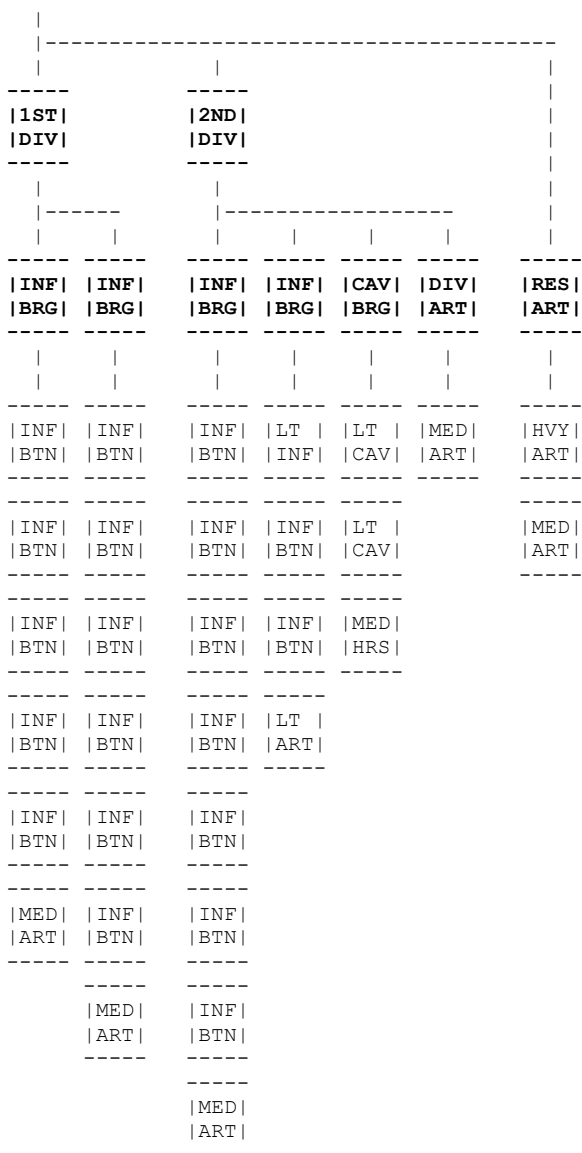
Light Brigade:

15) Grenze	13/1	Light, Strength = 7, QR = Average
16) Grenze	13/2	Light, Strength = 7, QR = Average
17) Jager	Mahr	Light, Strength = 7, QR = Veteran
18) Freicorps	2 nd	Strength = 2, QR = Raw
19) Freicorps Cavalry		Light Cavalry, Strength = 2, QR = Raw
20) Chevaulegers	4 th	Light Cavalry, Strength = 7, QR = Average
21) Hussars	3 rd	Light Cavalry, Strength = 8, QR = Veteran
22) Horse Artillery		Medium Artillery, Strength = 3, QR = Average

Units: Corps Reserve Artillery

1) Foot Artillery		Heavy Artillery, Strength = 3, QR = Average
2) Foot Artillery		Medium Artillery, Strength = 3, QR = Average

 | AUSTRIAN VI CORPS |
 | AT ASPERN-ESSLING | HILLER



Summary:

- 21 Infantry Battalions
- 2 Cavalry Regiments
- 8 Artillery Batteries

AUSTRIAN VI CORPS at Aspern-Essling under Hiller

Units: 1st Division: Hohenfeld

Infantry Brigade: Alder

- | | | |
|-------------------|----------------------|----------------------------------------------|
| 1) Line Infantry | 14/1 | Strength = 5, QR = Average |
| 2) Line Infantry | 14/2 | Strength = 5, QR = Average |
| 3) Line Infantry | 59/1 | Strength = 5, QR = Average |
| 4) Line Infantry | 59/2 | Strength = 5, QR = Average |
| 5) Landwehr | 3 rd Mahr | Strength = 10, QR = Raw |
| 6) Foot Artillery | | Medium Artillery, Strength = 4, QR = Average |

Infantry Brigade: Bianchi

7) Line Infantry	60/1	Strength = 6, QR = Average
8) Line Infantry	60/2	Strength = 6, QR = Average
9) Line Infantry	60/3	Strength = 6, QR = Average
10) Line Infantry	39/1	Strength = 3, QR = Average
11) Line Infantry	39/2	Strength = 3, QR = Average
12) Line Infantry	39/3	Strength = 3, QR = Average
13) Foot Artillery		Medium Artillery, Strength = 4, QR = Average

Units: 2nd Division: Kottulinsky

Infantry Brigade: Hoffmeister

1) Line Infantry	51/1	Strength = 3, QR = Average
2) Line Infantry	51/2	Strength = 3, QR = Average
3) Line Infantry	51/3	Strength = 3, QR = Average
4) Line Infantry	31/1	Strength = 6, QR = Average
5) Line Infantry	31/2	Strength = 6, QR = Average
6) Vienna Freicorps	3 rd	Strength = 5, QR = Average
7) Vienna Freicorps	4 th	Strength = 3, QR = Average
8) Foot Artillery		Medium Artillery, Strength = 3, QR = Average

Infantry Brigade: Nordmann

9) Grenze	7 th	Light, Strength = 2, QR = Average
10) Vienna Freicorps	1 st	Strength = 5, QR = Average
11) Vienna Freicorps	2 nd	Strength = 6, QR = Average
12) Foot Artillery		Light Artillery, Strength = 3, QR = Average

Cavalry Brigade: Wallmoden

13) Hussars	8 th	Light Cavalry, Strength = 5, QR = Veteran
14) Hussars	7 th	Light Cavalry, Strength = 7, QR = Veteran
15) Horse Artillery		Medium Artillery, Strength = 3, QR = Average

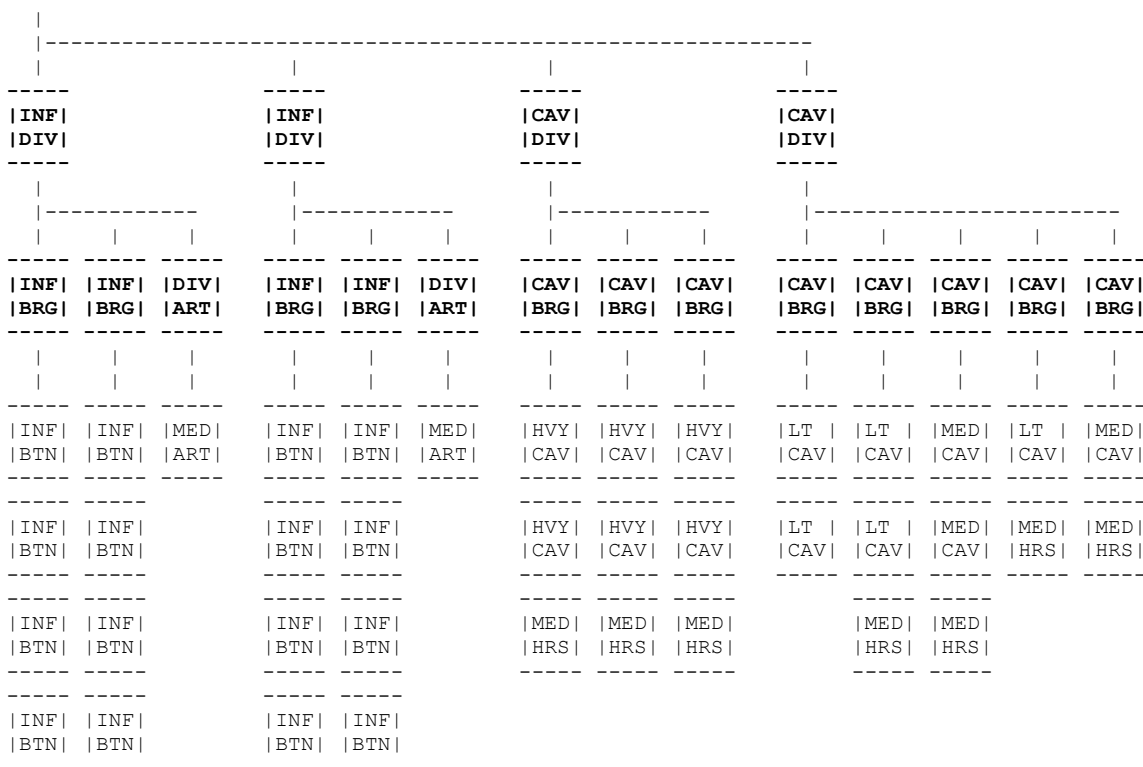
Division Artillery:

16) Foot Artillery		Medium Artillery, Strength = 3, QR = Average
--------------------	--	----------------------------------------------

Units: Corps Reserve Artillery

1) Foot Artillery		Heavy Artillery, Strength = 3, QR = Average
2) Foot Artillery		Medium Artillery, Strength = 3, QR = Average

 | AUSTRIAN RESERVE CORPS |
 | AT ASPERN-ESSLING | LIECHTENSTEIN



Summary:
 16 Infantry Battalions
 14 Cavalry Regiments
 9 Artillery Batteries

AUSTRIAN RESERVE CORPS at Aspern-Essling under Liechtenstein

Units: 1st Grenadier Division: d'Aspre

Infantry Brigade: Merville

- 1) Grenadiers Sch Strength = 7, QR = Veteran
- 2) Grenadiers Sco Strength = 7, QR = Veteran
- 3) Grenadiers Put Strength = 7, QR = Veteran
- 4) Grenadiers Bre Strength = 6, QR = Veteran

Infantry Brigade: Hammer

- 5) Grenadiers Kir Strength = 6, QR = Veteran
- 6) Grenadiers Bis Strength = 7, QR = Veteran
- 7) Grenadiers Okl Strength = 7, QR = Veteran
- 8) Grenadiers May Strength = 7, QR = Veteran

Division Artillery:

- 9) Foot Artillery Medium Artillery, Strength = 3, QR = Average

Units: 2nd Grenadier Division: Prochaszka

Infantry Brigade: von Melgum

- 1) Grenadiers Wei Strength = 8, QR = Veteran
- 2) Grenadiers Geo Strength = 7, QR = Veteran
- 3) Grenadiers Por Strength = 7, QR = Veteran
- 4) Grenadiers Len Strength = 7, QR = Veteran

Infantry Brigade: Steyrer

- 5) Grenadiers Hah Strength = 5, QR = Veteran
- 6) Grenadiers Hoh Strength = 7, QR = Veteran
- 7) Grenadiers Leg Strength = 7, QR = Veteran
- 8) Grenadiers Dem Strength = 8, QR = Veteran

Division Artillery:

9) Foot Artillery Medium Artillery, Strength = 3, QR = Average

Units: 1st Cavalry Division: Hessen-Homburg

Cavalry Brigade: Kroyher

1) Cuirassiers 1st Heavy Cavalry, Strength = 5, QR = Veteran
 2) Cuirassiers 6th Heavy Cavalry, Strength = 6, QR = Veteran
 3) Horse Artillery Medium Artillery, Strength = 3, QR = Average

Cavalry Brigade: Lederer

4) Cuirassiers 4th Heavy Cavalry, Strength = 5, QR = Veteran
 5) Cuirassiers 8th Heavy Cavalry, Strength = 6, QR = Veteran
 6) Horse Artillery Medium Artillery, Strength = 3, QR = Average

Cavalry Brigade: Siegenthal

7) Cuirassiers 3rd Heavy Cavalry, Strength = 5, QR = Veteran
 8) Cuirassiers 2nd Heavy Cavalry, Strength = 5, QR = Veteran
 9) Horse Artillery Medium Artillery, Strength = 3, QR = Average

Units: 2nd Cavalry Division: Keimayer

Cavalry Brigade: Vecsey

1) Chevauleger 4th Light Cavalry, Strength = 8, QR = Average
 2) Chevauleger 5th Light Cavalry, Strength = 8, QR = Average

Cavalry Brigade: Provencheres

3) Chevauleger 6th Light Cavalry, Strength = 6, QR = Average
 4) Chevauleger 3rd Light Cavalry, Strength = 7, QR = Average
 5) Horse Artillery Medium Artillery, Strength = 3, QR = Average

Cavalry Brigade: Rottermund

6) Dragoons 1st Medium Cavalry, Strength = 7, QR = Average
 7) Dragoons 3rd Medium Cavalry, Strength = 6, QR = Average
 8) Horse Artillery Medium Artillery, Strength = 3, QR = Average

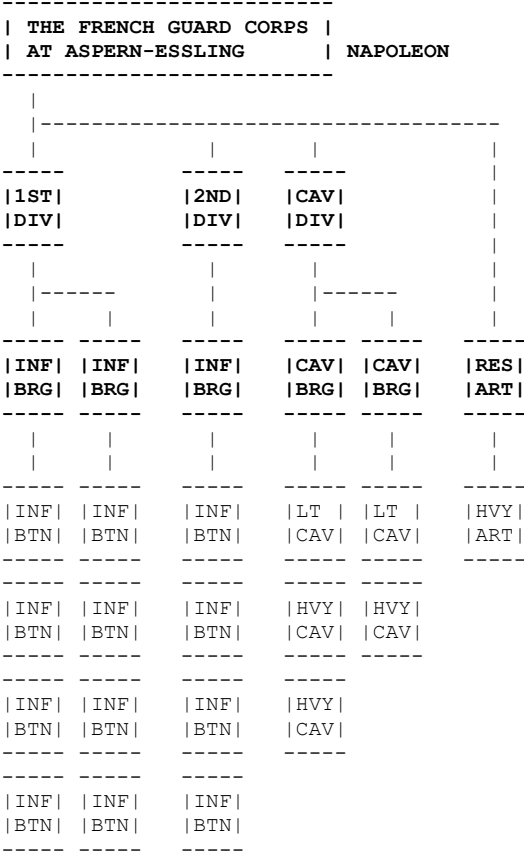
Cavalry Brigade: Wartensleben

9) Hussars 6th Light Cavalry, Strength = 10, QR = Veteran
 10) Horse Artillery Medium Artillery, Strength = 3, QR = Average

Cavalry Brigade: Clary

11) Dragoons 3rd Medium Cavalry, Strength = 6, QR = Average
 12) Horse Artillery Medium Artillery, Strength = 3, QR = Average

Aspern-Essling: 21-22 May 1809 The French Army commanded by Napoleon



Summary:
 12 Infantry Battalions
 5 Cavalry Regiments
 1 Artillery Battery

FRENCH GUARD CORPS at Aspern-Essling under Napoleon

Units: Young Guard Infantry Division: Curial

- Infantry Brigade: Rouget
- 1) Tirailleur Chasseurs Light, Strength = 7, QR = Veteran
 - 2) Tirailleur Chasseurs Light, Strength = 7, QR = Veteran
 - 3) Tirailleur Grenadiers Light, Strength = 6, QR = Veteran
 - 4) Tirailleur Grenadiers Light, Strength = 6, QR = Veteran

- Infantry Brigade: Gros
- 5) Fusilier Chasseurs Light, Strength = 6, QR = Veteran
 - 6) Fusilier Chasseurs Light, Strength = 6, QR = Veteran
 - 7) Fusilier Grenadiers Light, Strength = 6, QR = Veteran
 - 8) Fusilier Grenadiers Light, Strength = 6, QR = Veteran

Units: Old Guard Infantry Division: Comte

- Infantry Brigade:
- 1) Chasseurs a Pied Light, Strength = 8, QR = Veteran
 - 2) Chasseurs a Pied Light, Strength = 8, QR = Veteran
 - 3) Grenadiers a Pied Light, Strength = 7, QR = Veteran
 - 4) Grenadiers a Pied Light, Strength = 7, QR = Veteran

Units: Guard Cavalry Division: Casanova

Cavalry Brigade: Guyot

- | | |
|------------------------|-------------------------------------------|
| 1) Chasseurs a Cheval | Light Cavalry, Strength = 4, QR = Veteran |
| 2) Grenadiers a Cheval | Heavy Cavalry, Strength = 3, QR = Veteran |
| 3) Empress Dragoons | Heavy Cavalry, Strength = 3, QR = Veteran |

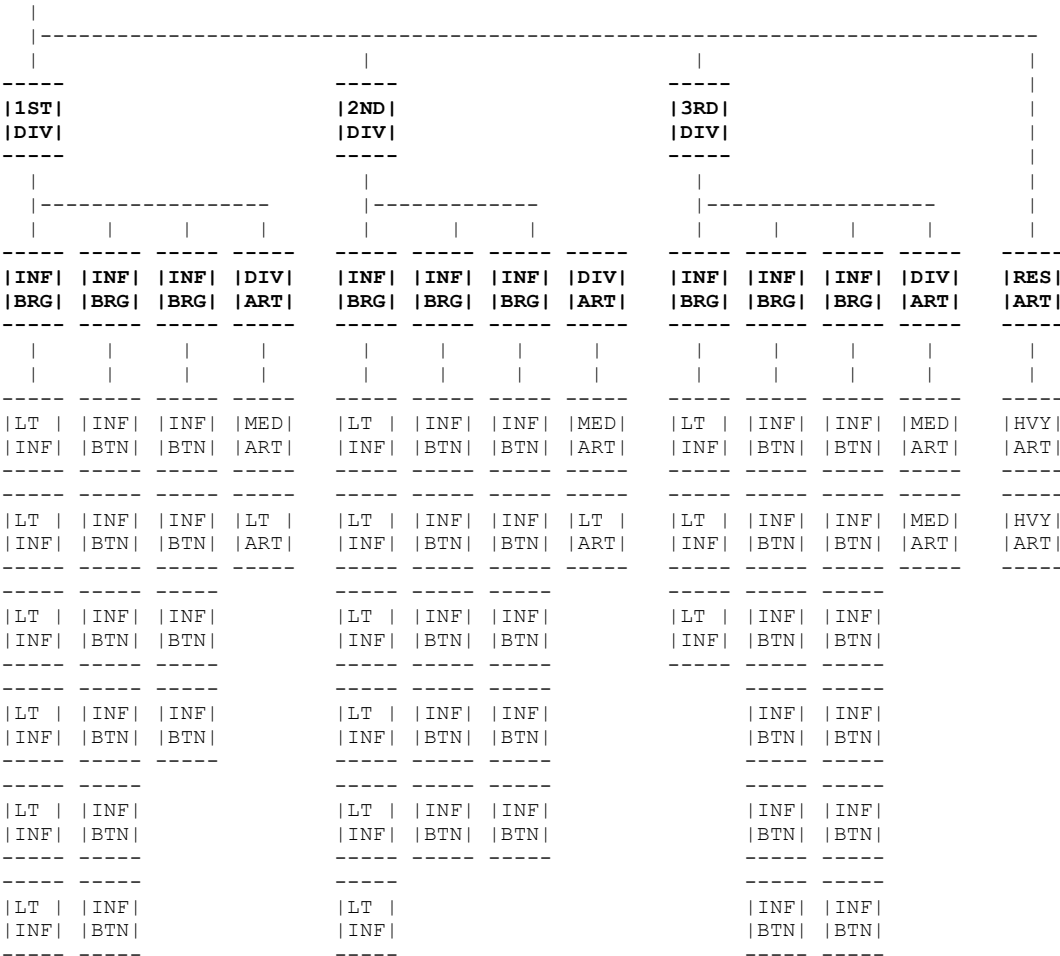
Cavalry Brigade: Krazinski

- | | |
|-----------------------|-------------------------------------------|
| 4) Polish Chevauleger | Light, Strength = 5, QR = Veteran |
| 5) Gendarmes d'Elite | Heavy Cavalry, Strength = 2, QR = Veteran |

Units: Guard Reserve Artillery

- | | |
|-------------------------|---------------------------------------------|
| 1) Guard Foot Artillery | Heavy Artillery, Strength = 4, QR = Veteran |
|-------------------------|---------------------------------------------|

| THE FRENCH II CORPS |
| AT ASPERN-ESSLING | LANNES



Summary:
47 Infantry Battalions
0 Cavalry Regiments
8 Artillery Batteries

FRENCH II CORPS at Aspern-Essling under Lannes

Units: 1st Infantry Division: Tharreau

Infantry Brigade: Conroux

- 1) Light Infantry 6/4 Light, Strength = 4, QR = Average
- 2) Light Infantry 24/4 Light, Strength = 4, QR = Average
- 3) Light Infantry 25/4 Light, Strength = 4, QR = Average
- 4) Light Infantry 9/4 Light, Strength = 4, QR = Average
- 5) Light Infantry 16/4 Light, Strength = 4, QR = Average
- 6) Light Infantry 27/4 Light, Strength = 4, QR = Average

Infantry Brigade: Albert

- 7) Line Infantry 8/4 Strength = 4, QR = Average
- 8) Line Infantry 24/4 Strength = 4, QR = Average
- 9) Line Infantry 45/4 Strength = 4, QR = Average
- 10) Line Infantry 94/4 Strength = 4, QR = Average
- 11) Line Infantry 95/4 Strength = 4, QR = Average
- 12) Line Infantry 96/4 Strength = 4, QR = Average

Infantry Brigade: Jarry

- 13) Line Infantry 4/4 Strength = 4, QR = Average
- 14) Line Infantry 18/4 Strength = 4, QR = Average
- 15) Line Infantry 54/4 Strength = 4, QR = Average
- 16) Line Infantry 63/4 Strength = 4, QR = Average

Division Artillery:

17) Foot Artillery Medium Artillery, Strength = 4, QR = Average
 18) Foot Artillery Light Artillery, Strength = 3, QR = Average

Units: 2nd Infantry Division: Claparede

Infantry Brigade: Coehorn

1) Light Infantry 17/4 Light, Strength = 3, QR = Average
 2) Light Infantry 21/4 Light, Strength = 3, QR = Average
 3) Light Infantry 26/4 Light, Strength = 3, QR = Average
 4) Light Infantry 28/4 Light, Strength = 3, QR = Average
 5) Light Infantry Po Light, Strength = 5, QR = Average
 6) Light Infantry Cor Light, Strength = 5, QR = Average

Infantry Brigade: Lesuire

7) Line Infantry 27/4 Strength = 3, QR = Average
 8) Line Infantry 39/4 Strength = 3, QR = Average
 9) Line Infantry 59/4 Strength = 3, QR = Average
 10) Line Infantry 69/4 Strength = 3, QR = Average
 11) Line Infantry 76/4 Strength = 3, QR = Average

Infantry Brigade: Ficatier

12) Line Infantry 40/4 Strength = 3, QR = Average
 13) Line Infantry 88/4 Strength = 3, QR = Average
 14) Line Infantry 64/4 Strength = 3, QR = Average
 15) Line Infantry 100/4 Strength = 3, QR = Average
 16) Line Infantry 103/4 Strength = 3, QR = Average

Division Artillery:

17) Foot Artillery Medium Artillery, Strength = 3, QR = Average
 18) Foot Artillery Light Artillery, Strength = 3, QR = Average

Units: 3rd Infantry Division: St Hilaire

Infantry Brigade: Marion

1) Light Infantry 10/1 Light, Strength = 7, QR = Average
 2) Light Infantry 10/2 Light, Strength = 7, QR = Average
 3) Light Infantry 10/3 Light, Strength = 7, QR = Average

Infantry Brigade: Lorencez

4) Line Infantry 3/1 Strength = 6, QR = Average
 5) Line Infantry 3/2 Strength = 6, QR = Average
 6) Line Infantry 3/3 Strength = 6, QR = Average
 7) Line Infantry 57/1 Strength = 5, QR = Average
 8) Line Infantry 57/2 Strength = 5, QR = Average
 9) Line Infantry 57/3 Strength = 5, QR = Average

Infantry Brigade: Destabenrath

10) Line Infantry 72/1 Strength = 6, QR = Average
 11) Line Infantry 72/2 Strength = 6, QR = Average
 12) Line Infantry 72/3 Strength = 6, QR = Average
 13) Line Infantry 105/1 Strength = 5, QR = Average
 14) Line Infantry 105/2 Strength = 5, QR = Average
 15) Line Infantry 105/3 Strength = 5, QR = Average

Division Artillery:

16) Foot Artillery Medium Artillery, Strength = 4, QR = Average
 17) Foot Artillery Medium Artillery, Strength = 3, QR = Average

Units: Corps Reserve Artillery

1) Foot Artillery Heavy Artillery, Strength = 4, QR = Average
 2) Foot Artillery Heavy Artillery, Strength = 4, QR = Average

 | THE FRENCH IV CORPS |
 | AT ASPERN-ESSLING | MASSENA

(Continued)-->

1ST		2ND				3RD			4TH			CAV	
DIV		DIV				DIV			DIV			DIV	
INF	DIV	INF	INF	INF	DIV	INF	INF	DIV	INF	INF	RES	CAV	RES
BRG	ART	BRG	BRG	BRG	ART	BRG	BRG	ART	BRG	BRG	ART	BRG	ART
LT	MED	LT	INF	INF	MED	INF	INF	MED	LT	INF	MED	LT	MED
INF	ART	INF	BTN	BTN	ART	BTN	BTN	ART	INF	BTN	ART	CAV	ART
LT	MED	LT	INF	INF	MED	INF	INF	LT	INF	INF	BTN	LT	CAV
INF	HRS	INF	BTN	BTN	HRS	BTN	BTN	INF	INF	INF	BTN	CAV	CAV
LT	INF	LT	INF	INF	MED	INF	INF	INF	INF	INF	BTN	LT	CAV
INF	ART	INF	BTN	BTN	ART	BTN	BTN	INF	INF	INF	BTN	CAV	CAV
INF	BTN	INF	INF	INF	INF	INF	INF	INF	INF	INF	BTN	LT	CAV
BTN	ART	BTN	BTN	BTN	ART	BTN	BTN	BTN	BTN	BTN	BTN	CAV	CAV
INF	BTN	INF	INF	INF	INF	INF	INF	INF	INF	INF	BTN	LT	CAV
BTN	ART	BTN	BTN	BTN	ART	BTN	BTN	BTN	BTN	BTN	BTN	CAV	CAV
INF	BTN	INF	INF	INF	INF	INF	INF	INF	INF	INF	BTN	LT	CAV
BTN	ART	BTN	BTN	BTN	ART	BTN	BTN	BTN	BTN	BTN	BTN	CAV	CAV

>>-----

ATT	
DIV	
CAV	CAV
BRG	BRG
LT	LT
CAV	CAV
LT	LT
CAV	CAV
LT	LT
CAV	CAV

Summary:
 38 Infantry Battalions
 11 Cavalry Regiments
 8 Artillery Batteries

FRENCH IV CORPS at Aspern-Essling under Massena**Units: 1st Infantry Division: Legrand**

Infantry Brigade: Ledru

1) Light Infantry	26/1	Light, Strength = 7, QR = Average
2) Light Infantry	26/2	Light, Strength = 7, QR = Average
3) Light Infantry	26/3	Light, Strength = 7, QR = Average
4) Line Infantry	18/1	Strength = 7, QR = Average
5) Line Infantry	18/2	Strength = 7, QR = Average
6) Line Infantry	18/3	Strength = 7, QR = Average

Division Artillery:

7) Foot Artillery		Medium Artillery, Strength = 4, QR = Average
8) Horse Artillery		Medium Artillery, Strength = 3, QR = Average

Units: 2nd Infantry Division: Saint-Cyr

Infantry Brigade: Cosson

1) Light Infantry	24/1	Light, Strength = 8, QR = Average
2) Light Infantry	24/2	Light, Strength = 8, QR = Average
3) Light Infantry	24/3	Light, Strength = 8, QR = Average

Infantry Brigade: Dalesme

4) Line Infantry	4/1	Strength = 8, QR = Average
5) Line Infantry	4/2	Strength = 8, QR = Average
6) Line Infantry	4/3	Strength = 8, QR = Average
7) Line Infantry	46/1	Strength = 8, QR = Average
8) Line Infantry	46/2	Strength = 8, QR = Average
9) Line Infantry	46/3	Strength = 8, QR = Average

Infantry Brigade (Hesse-Darmstadt): Gardener

10) Leib Garde Infantry	HDLG1	Strength = 6, QR = Veteran
11) Leib Garde Infantry	HDLG2	Strength = 6, QR = Veteran
12) Leib Garde Fusilier	HDLGF	Strength = 6, QR = Veteran
13) Leib Fusilier	HDLF	Strength = 6, QR = Average

Division Artillery:

14) Foot Artillery		Medium Artillery, Strength = 4, QR = Average
15) Horse Artillery		Medium Artillery, Strength = 3, QR = Average
16) Foot Artillery	HD	Medium Artillery, Strength = 3, QR = Average

Units: 3rd Infantry Division: Molitor

Infantry Brigade: Leguay

1) Line Infantry	2/1	Strength = 6, QR = Average
2) Line Infantry	2/2	Strength = 6, QR = Average
3) Line Infantry	16/1	Strength = 6, QR = Average
4) Line Infantry	16/2	Strength = 6, QR = Average
5) Line Infantry	16/3	Strength = 6, QR = Average

Infantry Brigade: Viviez

6) Line Infantry	37/1	Strength = 6, QR = Average
7) Line Infantry	37/2	Strength = 6, QR = Average
8) Line Infantry	37/3	Strength = 6, QR = Average
9) Line Infantry	67/1	Strength = 6, QR = Average
10) Line Infantry	67/2	Strength = 6, QR = Average
11) Line Infantry	67/3	Strength = 6, QR = Average

Division Artillery:

12) Foot Artillery		Medium Artillery, Strength = 3, QR = Average
--------------------	--	----------------------------------------------

Units: 4th Infantry Division: Boudet

Infantry Brigade: Fririon

1) Light Infantry	3/1	Light, Strength = 6, QR = Average
2) Light Infantry	3/2	Light, Strength = 6, QR = Average

Infantry Brigade: Valory

3) Line Infantry	56/1	Strength = 4, QR = Average
4) Line Infantry	56/2	Strength = 5, QR = Average
5) Line Infantry	56/3	Strength = 4, QR = Average
6) Line Infantry	93/1	Strength = 4, QR = Average
7) Line Infantry	93/2	Strength = 5, QR = Average
7) Line Infantry	93/3	Strength = 5, QR = Average

Division Artillery:

8) Foot Artillery		Medium Artillery, Strength = 3, QR = Average
-------------------	--	----------------------------------------------

Units: Cavalry Division: Marulaz

Cavalry Brigade:

1) Chasseurs a Cheval	23 rd	Light Cavalry, Strength = 4, QR = Average
2) Chasseurs a Cheval	3 rd	Light Cavalry, Strength = 4, QR = Average
3) Chasseurs a Cheval	14 th	Light Cavalry, Strength = 4, QR = Average
4) Chasseurs a Cheval	19 th	Light Cavalry, Strength = 4, QR = Average
5) Baden Light Dragoons	BLD	Light Cavalry, Strength = 3, QR = Average
6) Hesse-D Chevaulegers	HDC	Light Cavalry, Strength = 2, QR = Veteran

Units: Corps Reserve Artillery

1) Foot Artillery	Heavy Artillery, Strength = 4, QR = Average
2) Foot Artillery	Medium Artillery, Strength = 4, QR = Average

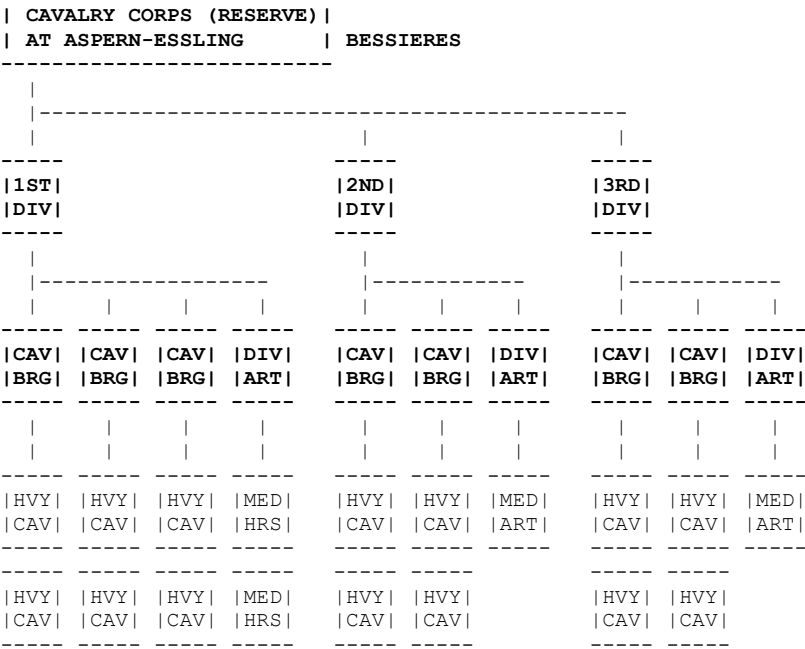
Units: Attached Cavalry Division: Lasalle

Cavalry Brigade: Pire

1) Hussars	8 th	Light Cavalry, Strength = 6, QR = Average
2) Chasseurs a Cheval	16 th	Light Cavalry, Strength = 6, QR = Average

Cavalry Brigade: Bruyere

3) Chasseurs a Cheval	13 th	Light Cavalry, Strength = 6, QR = Average
4) Chasseurs a Cheval	24 th	Light Cavalry, Strength = 6, QR = Average
5) Hesse-D Chevaulegers	HDC	Light Cavalry, Strength = 3, QR = Veteran



Summary:
 14 Cavalry Regiments
 4 Artillery Batteries

CAVALRY CORPS (RESERVE) at Aspern-Essling under Marshal Bessieres

Units: 1st Cavalry Division: Nansouty

- Cavalry Brigade: Defrance
 1) Carabiniers 1st Heavy Cavalry, Strength = 6, QR = Veteran
 2) Carabiniers 2nd Heavy Cavalry, Strength = 6, QR = Veteran
- Cavalry Brigade: Doumerc
 3) Cuirassiers 2nd Heavy Cavalry, Strength = 6, QR = Veteran
 4) Cuirassiers 9th Heavy Cavalry, Strength = 6, QR = Veteran
- Cavalry Brigade: St Germain
 5) Cuirassiers 3rd Heavy Cavalry, Strength = 6, QR = Veteran
 6) Cuirassiers 12th Heavy Cavalry, Strength = 6, QR = Veteran
- Division Artillery:
 7) Horse Artillery Light Artillery, Strength = 3, QR = Average
 8) Horse Artillery Light Artillery, Strength = 3, QR = Average

Units: 2nd Cavalry Division: St Suplice

- Cavalry Brigade: Lagrange
 1) Cuirassiers 1st Heavy Cavalry, Strength = 5, QR = Veteran
 2) Cuirassiers 5th Heavy Cavalry, Strength = 5, QR = Veteran
- Cavalry Brigade: Guiton
 3) Cuirassiers 10th Heavy Cavalry, Strength = 6, QR = Veteran
 4) Cuirassiers 11th Heavy Cavalry, Strength = 6, QR = Veteran
- Division Artillery:
 5) Horse Artillery Light Artillery, Strength = 3, QR = Average

Units: 3rd Cavalry Division: d’Espagne

- Cavalry Brigade: Raynaud
 1) Cuirassiers 4th Heavy Cavalry, Strength = 6, QR = Veteran
 2) Cuirassiers 6th Heavy Cavalry, Strength = 7, QR = Veteran
- Cavalry Brigade: Fouler
 3) Cuirassiers 7th Heavy Cavalry, Strength = 5, QR = Veteran
 4) Cuirassiers 8th Heavy Cavalry, Strength = 8, QR = Veteran
- Division Artillery:
 5) Horse Artillery Light Artillery, Strength = 3, QR = Average